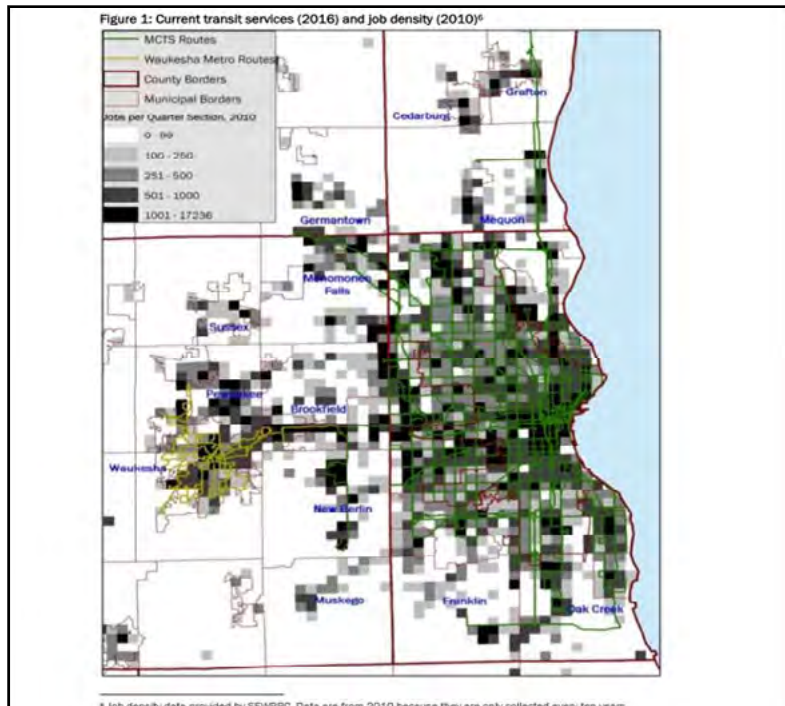
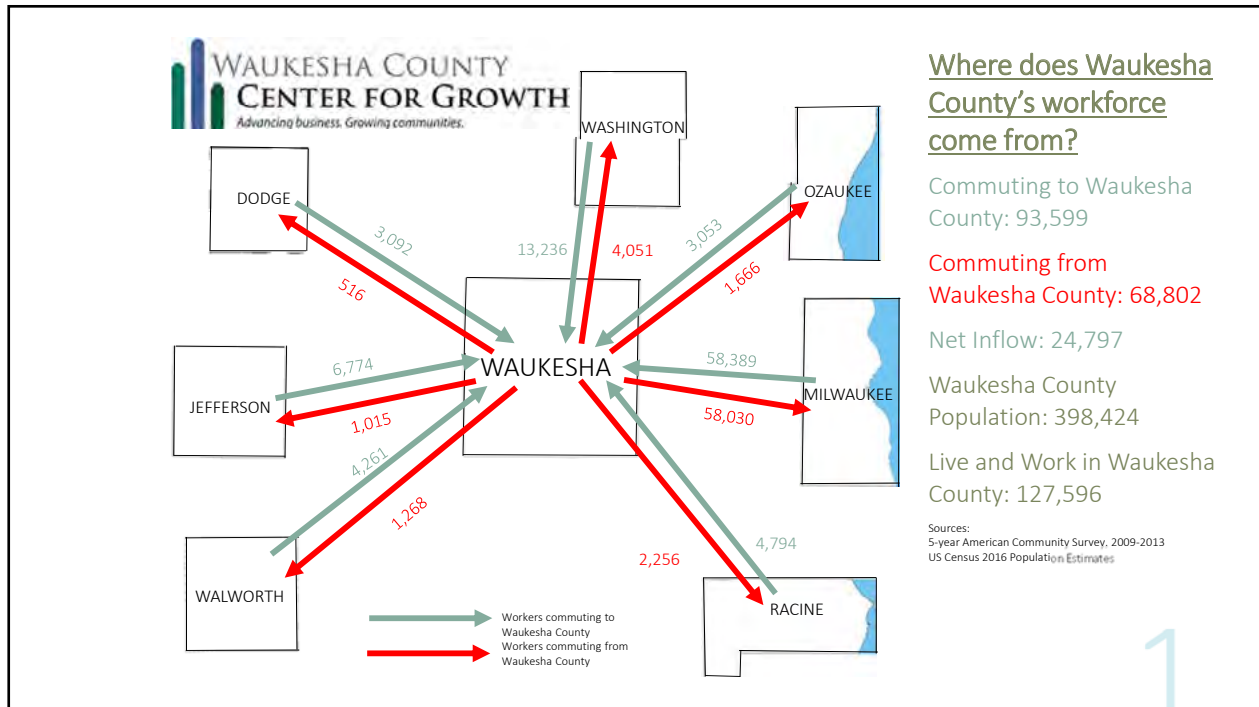


WORKFORCE TRENDS IN WAUKESHA COUNTY



Job Density and current Transit Service in Metro

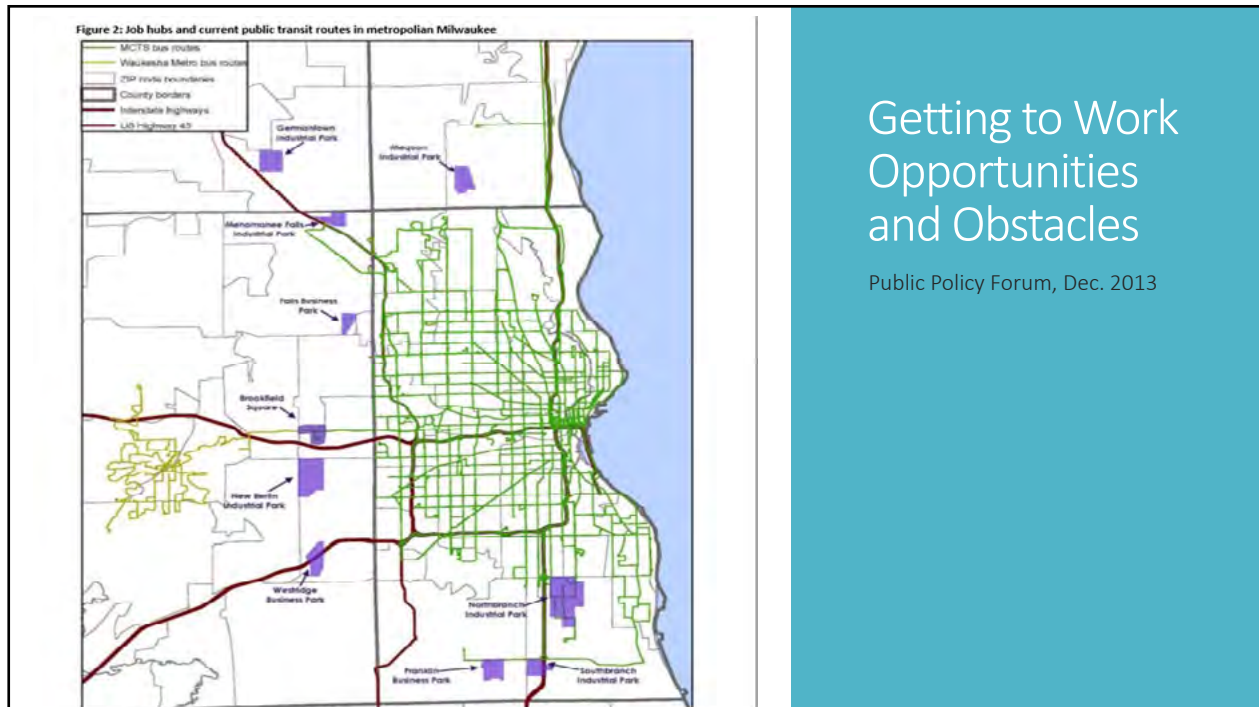
Source: Public Policy Forum Last Mile Study, March 2017

Job density data provided by SEWRPC, 2010

Transit service of MCTS and Waukesha Metro as of March 2017

Tim Casey
Waukesha County Business Alliance

WORKFORCE TRENDS IN WAUKESHA COUNTY

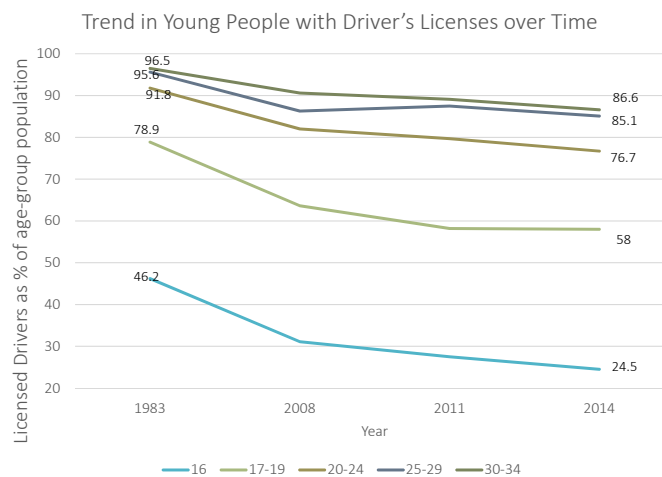


Getting to Work Opportunities and Obstacles

Public Policy Forum, Dec. 2013

Changing Modes of Transportation

- Fewer young people are getting their driver's for a variety of reasons
- Most cited reasons, from survey data by University of Michigan TRI:
 - Too busy/not enough time to get Drivers license
 - High cost of owning and maintaining vehicle
 - Able to get transportation from others
- Since 1983, the number of people who are licensed drivers, as a percentage of their age-group population, has consistently decreased
- Only 60% of 18 year-olds have DL today compared to 80% in 1983



Sources: University of Michigan Transportation Research Institute