

**BUILDING RESILIENT TRANSPORTATION
NETWORKS IN CHICAGO**

ON TO 2050

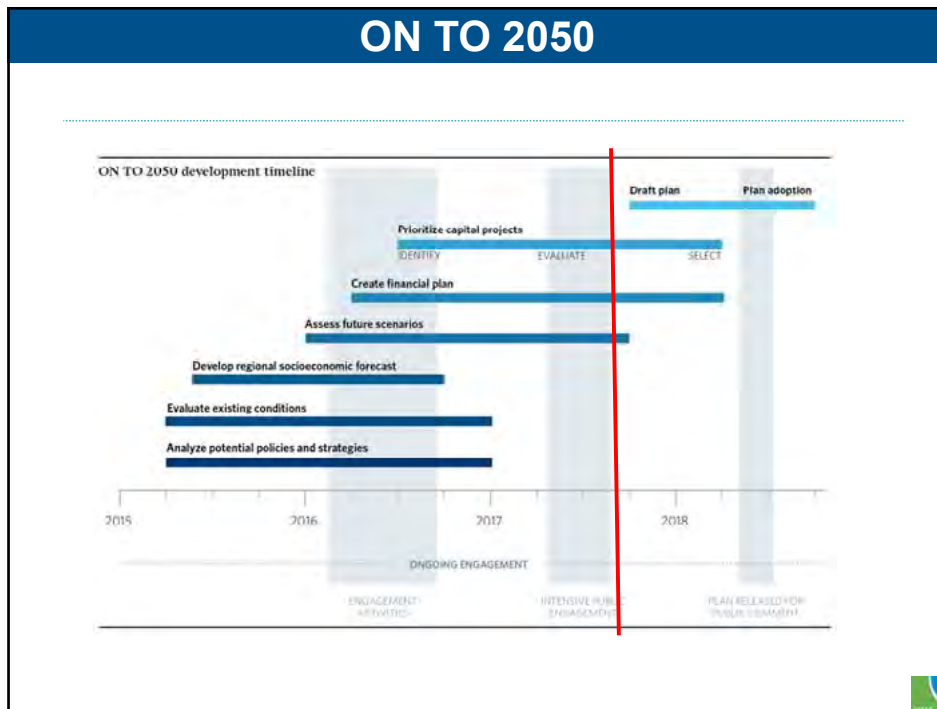
**A More Resilient
Chicago Region**

*Elizabeth Irvin
Chicago Metropolitan
Agency for Planning
October 30, 2017*



*Elizabeth Irvin
Chicago Metropolitan Agency for Planning*

BUILDING RESILIENT TRANSPORTATION NETWORKS IN CHICAGO



ON TO 2050

Three Overarching Principles:

- Resilience
- Inclusive Growth
- Prioritized Investment



Elizabeth Irvin
Chicago Metropolitan Agency for Planning

BUILDING RESILIENT TRANSPORTATION NETWORKS IN CHICAGO

ON TO 2050

Resilience

A strong region requires communities, infrastructure, and systems that are able to thrive in the face of uncertain future economic, fiscal, and environmental shifts

 CMAP

 CMAP

ON TO 2050

ALTERNATIVE
FUTURES

 CMAP

Elizabeth Irvin

Chicago Metropolitan Agency for Planning

BUILDING RESILIENT TRANSPORTATION NETWORKS IN CHICAGO

CMAP

ON TO 2050

ALTERNATIVE
FUTURES

What if by 2050...

- ... climate change impacts have intensified?
- ... public resources are further constrained?
- ... more people choose walkable, mixed-use communities?
- ... technological innovations enhance transportation?
- ... the economy has been transformed?



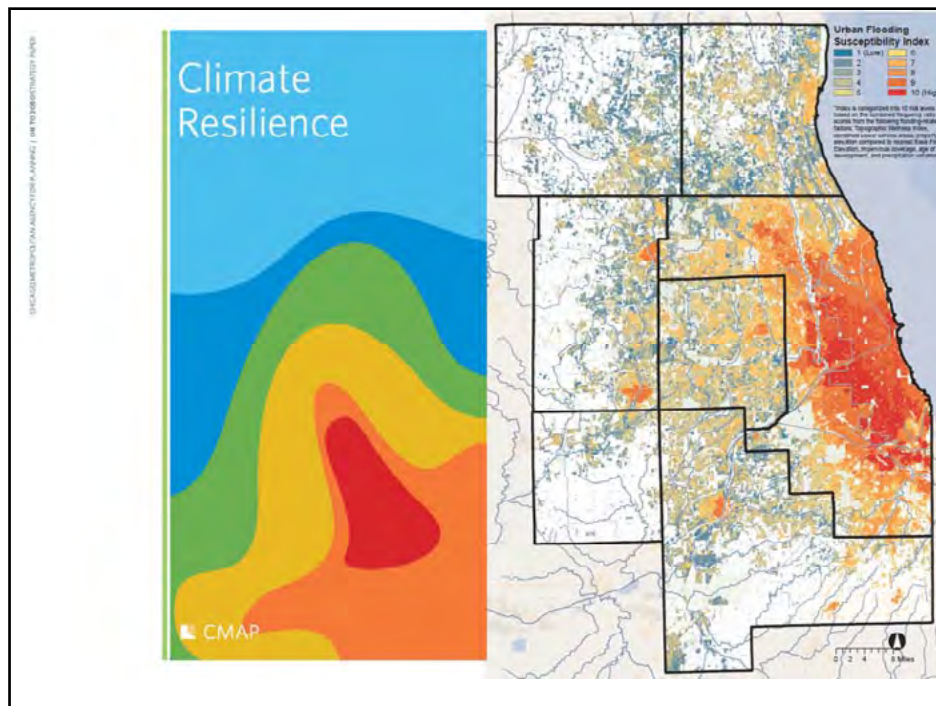
Elizabeth Irvin

Chicago Metropolitan Agency for Planning

BUILDING RESILIENT TRANSPORTATION NETWORKS IN CHICAGO

As climate change intensifies, which impact worries you most in our region?

- A. Harm to life and property from storms, flooding (24%)
- B. Insufficient water supply (24%)
- C. Threats to regional agriculture, biodiversity
- D. Effect of extreme heat on health
- E. More intense impacts for vulnerable residents
- F. I'm not worried
- G. Other



Elizabeth Irvin

Chicago Metropolitan Agency for Planning

BUILDING RESILIENT TRANSPORTATION NETWORKS IN CHICAGO

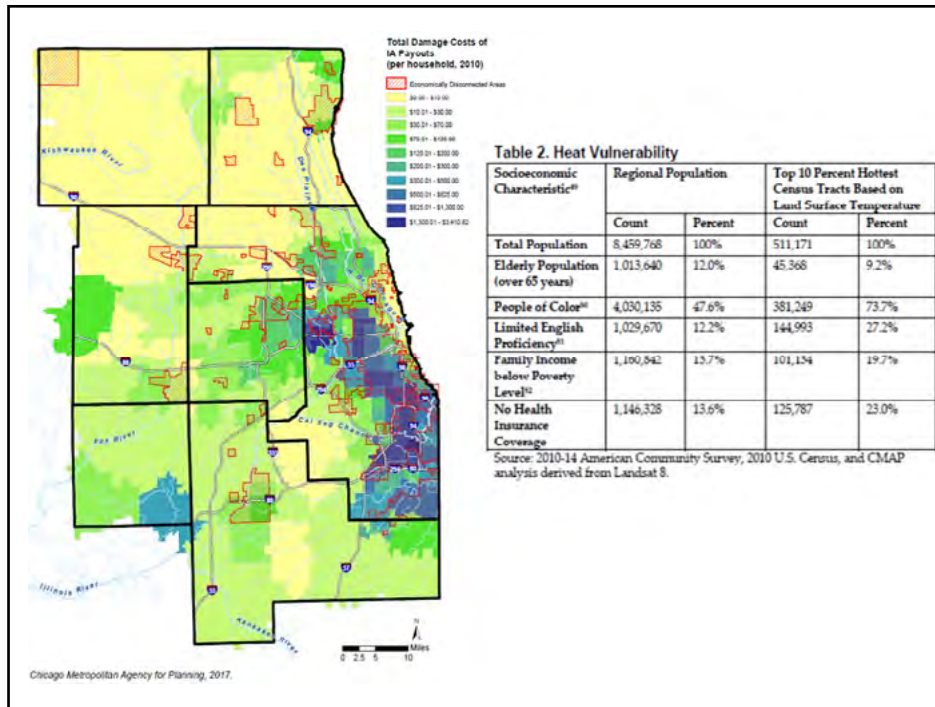


Table 2. Heat Vulnerability

Socioeconomic Characteristic ^{a)}	Regional Population		Top 10 Percent Hottest Census Tracts Based on Land Surface Temperature	
	Count	Percent	Count	Percent
Total Population	8,459,768	100%	511,171	100%
Elderly Population (over 65 years)	1,013,640	12.0%	45,368	9.2%
People of Color ^{b)}	4,030,135	47.6%	381,249	73.7%
Limited English Proficiency ^{c)}	1,029,670	12.2%	144,993	27.2%
Family Income below Poverty Level ^{d)}	1,100,842	13.7%	101,154	19.7%
No Health Insurance Coverage	1,146,328	13.6%	125,787	23.0%

Source: 2010-14 American Community Survey, 2010 U.S. Census, and CMAP analysis derived from Landsat 8.

Illinois All-Hazards Transportation System Vulnerability Assessment

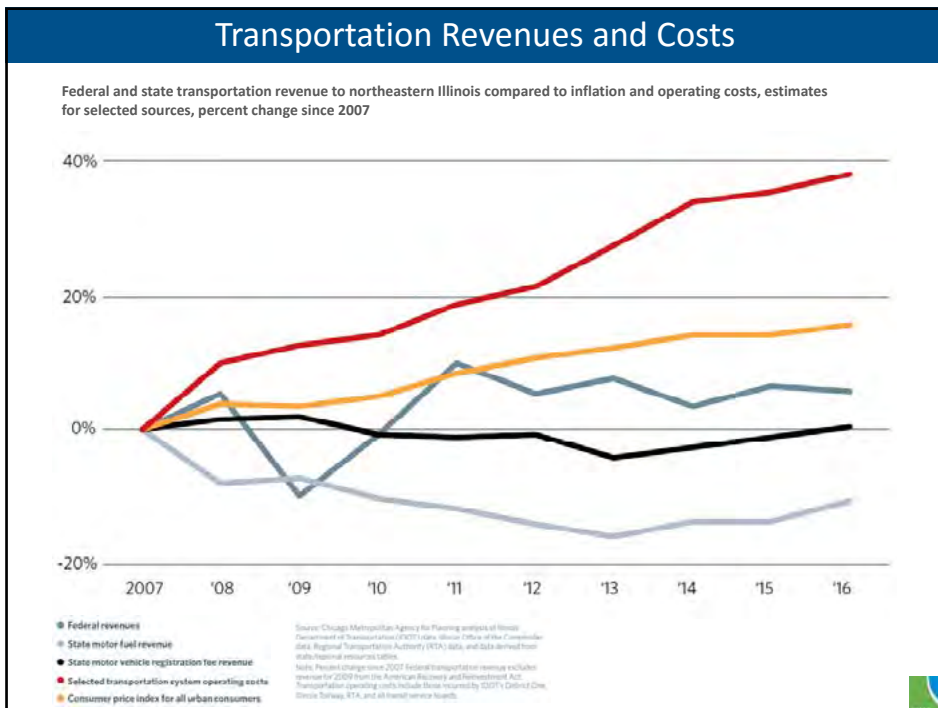
October 3, 2017

RTA, PACE AND CTA KICK OFF FLOODING RESILIENCY PLAN FOR BUS OPERATIONS

August 12, 2016 | Executive Director Leanne P. Raddean | Uncategorized | Leave a comment

Elizabeth Irvin
Chicago Metropolitan Agency for Planning

BUILDING RESILIENT TRANSPORTATION NETWORKS IN CHICAGO



Elizabeth Irvin
Chicago Metropolitan Agency for Planning

BUILDING RESILIENT TRANSPORTATION NETWORKS IN CHICAGO



Resilience Recommendations

Increase the capacity of communities to achieve local and regional goals

Address state and local tax policy

Support walkable, mixed-use communities

Plan for population shifts

Incorporate climate change considerations into planning and development

Plan for the regional transportation impacts of major land use change

Coordinate across jurisdictions to promote collaborative action

Elizabeth Irvin

Chicago Metropolitan Agency for Planning

BUILDING RESILIENT TRANSPORTATION NETWORKS IN CHICAGO

ON TO 2050

Elizabeth Irvin
eirvin@cmap.illinois.gov
312-386-8669



Elizabeth Irvin
Chicago Metropolitan Agency for Planning

