

**AMENDMENT TO THE
REGIONAL WATER QUALITY
MANAGEMENT PLAN: 2000**

TOWN OF SALEM

**AS ADOPTED BY THE
SOUTHEASTERN WISCONSIN REGIONAL PLANNING COMMISSION**

DECEMBER 1991

**SOUTHEASTERN WISCONSIN
REGIONAL PLANNING COMMISSION**

KENOSHA COUNTY

Leon T. Dreger
Francis J. Pitts
Sheila M. Siegler

RACINE COUNTY

David B. Falstad
Martin J. Itzin
Jean M. Jacobson,
Secretary

MILWAUKEE COUNTY

John R. Bolden
William Ryan Drew
Thomas W. Meaux

WALWORTH COUNTY

John D. Ames
Anthony F. Balestrieri
Allen L. Morrison,
Vice-Chairman

OZAUKEE COUNTY

Leroy A. Bley
Thomas H. Buestrin
Elroy J. Schreiner

WASHINGTON COUNTY

Daniel S. Schmidt
Patricia A. Strachota
Frank F. Uttech,
Chairman

WAUKESHA COUNTY

Richard A. Congdon
Robert F. Hamilton
William D. Rogan,
Treasurer

**SOUTHEASTERN WISCONSIN REGIONAL
PLANNING COMMISSION STAFF**

Kurt W. Bauer, PE, AICP, RLSExecutive Director
Philip C. Evenson, AICPAssistant Director
Kenneth R. Yunker, PEAssistant Director
Robert P. Biebel, PEChief Environmental Engineer
Leland H. Kreblin, RLSChief Planning Illustrator
Donald R. MartinsonChief Transportation Engineer
John R. MelandChief Economic Development Planner
Thomas D. PattersonGraphics Systems Manager
Bruce P. RubinChief Land Use Planner
Roland O. Tonn, AICPChief Community Assistance Planner
Joan A. ZenkAdministrative Officer

SOUTHEASTERN WISCONSIN REGIONAL PLANNING COMMISSION

916 N. EAST AVENUE • P.O. BOX 1607 • WAUKESHA, WISCONSIN 53187-1607 • TELEPHONE (414) 547-6721
TELECOPIER (414) 547-1103

Serving the Counties of:

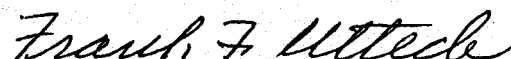
KENOSHA
MILWAUKEE
OSHAUKEE
RACINE
WALWORTH
WASHINGTON
WAUKESHA

SUBJECT: Certification of Amendment to the Adopted Regional Water Quality Management Plan (Town of Salem Sanitary Sewer Service Areas)

TO: The Legislative Bodies of Concerned Local Units of Government within the Southeastern Wisconsin Region, namely: the County of Kenosha and the Town of Salem

This is to certify that at the quarterly meeting of the Southeastern Wisconsin Regional Planning Commission, held at the Milwaukee County Courthouse, Milwaukee, Wisconsin, on the 4th day of December 1991, the Commission did by unanimous vote by all Commissioners present, being 13 ayes and 0 nays, and by appropriate Resolution, a copy of which is made a part hereof and incorporated by reference to the same force and effect as if it had been specifically set forth herein in detail, adopt an amendment to the regional water quality management plan, which plan was originally adopted by the Commission on the 12th day of July 1979, as part of the master plan for the physical development of the Region. The said amendment to the regional water quality management plan pertains to the proposed sanitary sewer service areas for the Town of Salem Utility Districts Nos. 1 and 2 and consists of the documents attached hereto and made a part hereof. Such action taken by the Commission is recorded on, and is a part of, said plan, and the plan as amended is hereby transmitted to the constituent local units of government for consideration, adoption, and implementation.

IN TESTIMONY WHEREOF, I have hereunto set my hand and seal and cause the Seal of the Southeastern Wisconsin Regional Planning Commission to be hereto affixed. Dated at the City of Waukesha, Wisconsin, this 5th day of December 1991.



Frank F. Uttech, Chairman
Southeastern Wisconsin
Regional Planning Commission

ATTEST:



Kurt W. Bauer, Deputy Secretary

(This page intentionally left blank)

RESOLUTION NO. 91-27

RESOLUTION OF THE SOUTHEASTERN WISCONSIN REGIONAL PLANNING COMMISSION AMENDING THE ADOPTED REGIONAL WATER QUALITY MANAGEMENT PLAN, THAT PLAN BEING A PART OF THE MASTER PLAN FOR THE PHYSICAL DEVELOPMENT OF THE REGION COMPRISED OF THE COUNTIES OF KENOSHA, MILWAUKEE, OZAUKEE, RACINE, WALWORTH WASHINGTON, AND WAUKESHA IN THE STATE OF WISCONSIN (TOWN OF SALEM SANITARY SEWER SERVICE AREAS)

WHEREAS, pursuant to Section 66.945(10) of the Wisconsin Statutes, the Southeastern Wisconsin Regional Planning Commission, at a meeting held on the 12th day of July 1979, duly adopted a regional water quality management plan as documented in the three-volume SEWRPC Planning Report No. 30, A Regional Water Quality Management Plan for Southeastern Wisconsin: 2000; and

WHEREAS, at a meeting held on the 3rd day of March 1986, the Commission duly adopted an amendment to the regional water quality management plan refining and detailing the Town of Salem Utility District No. 2 sanitary sewer service area as documented in SEWRPC Community Assistance Planning Report No. 143, Sanitary Sewer Service Area for the Town of Salem Utility District No. 2, Kenosha County, Wisconsin, February 1986; and

WHEREAS, at a meeting held on the 1st day of December 1986, the Commission duly adopted an amendment to the regional water quality management plan refining and detailing the Town of Salem Utility District No. 1 sanitary sewer service area as documented in SEWRPC Community Assistance Planning Report No. 145, Sanitary Sewer Service Area for the Town of Salem Utility District No. 1, Village of Paddock Lake, and Town of Bristol Utility District Nos. 1 and 1B, Kenosha County, Wisconsin, October 1986; and

WHEREAS, by letter dated September 27, 1991, the Town of Salem, acting on behalf of the Town of Salem Utility Districts Nos. 1 and 2, requested that the Commission further amend the regional water quality management plan by removing from that plan the designation of the public sewage treatment plant serving the Town of Salem Utility District No. 1 service area, by designating in that plan the Town of Salem Utility District No. 2 sewage treatment plant as the receiving facility for sewage from the Town of Salem Utility District No. 1 service area, and to add to the sewer service element of that plan certain lands lying in the Town of Salem Utility District No. 1; and

WHEREAS, the proposed amendment to the regional water quality management plan is documented in a Commission staff memorandum entitled, "Response to Request by the Town of Salem Utility Districts Nos. 1 and 2 to Amend the Regional Water Quality Management Plan," attached hereto and made a part hereof, which memorandum concludes that the plan amendment requested by the Town of Salem is sound and in the public interest; and

WHEREAS, the requested changes to the regional water quality management plan were documented in a facility plan entitled, Salem Utility District No. 1 Facility Plan, prepared by the Town of Salem Utility District No. 1, which was the subject of a public hearing held by the Town of Salem on March 28, 1991; and

WHEREAS, the record of the public hearing reflects no substantial opposition to the changes to the regional water quality management plan as recommended in the aforereferenced facility plan and as subsequently set forth in the abovementioned staff memorandum; and

WHEREAS, Section 66.945(9) of the Wisconsin Statutes authorizes and empowers the Regional Planning Commission, as the work of making the whole master plan progresses, to amend, extend, or add to the master plan or carry any part or subject thereof into greater detail;

NOW, THEREFORE, BE IT HEREBY RESOLVED:

FIRST: That the regional water quality management plan for the Southeastern Wisconsin Region, being a part of the master plan for the physical development of the Region and comprised of SEWRPC Planning Report No. 30, Volumes One, Two, and Three, which was adopted by the Commission as a part of the master plan on the 12th day of July 1979, and which was amended on the 3rd day of March 1986 to include the initial refined Town of Salem Utility District No. 2 sanitary sewer service area, as set forth in SEWRPC Community Assistance Planning Report No. 143, and which was further amended on the 1st day of December 1986 to include the initial refined Town of Salem Utility District No. 1 sanitary sewer service area, as set forth in SEWRPC Community Assistance Planning Report No. 145, be and the same hereby is amended as follows:

1. The designation of the Town of Salem Utility District No. 1 sewage treatment facility as a public sewage treatment plant with discharge of treated sewage effluent to Brighton Creek is hereby removed from the plan.
2. The designation of the Town of Salem Utility District No. 2 sewage treatment facility as the receiving plant for sewage from the Town of Salem Utility District No. 1 sewer service area is hereby added to the plan.
3. A trunk sewer providing for the connection of the Town of Salem Utility District No. 1 sewer service area to the Town of Salem Utility District No. 2 system is hereby added to the plan, such trunk sewer having an alignment and configuration substantially as shown on Map 2 of the aforementioned SEWRPC staff memorandum.
4. The current delineation of the Town of Salem Utility District No. 1 sewer service area is hereby amended in the manner shown on Map 1 of the aforementioned SEWRPC staff memorandum.

SECOND: That the Executive Director is authorized to submit findings to the Wisconsin Department of Natural Resources and the Wisconsin Department of Industry, Labor and Human Relations that public and private sanitary sewer extensions necessary to serve the anticipated development on the lands to be added are in conformance with, and would serve to implement, the adopted regional water quality management plan as herein amended.

THIRD: That a true, correct, and exact copy of this resolution, together with the aforementioned SEWRPC staff memorandum, shall be forthwith distributed to each of the local legislative bodies of the local governmental units within the Region entitled thereto and to such other bodies, agencies, or individuals as the law may require or as the Commission, its Executive Committee, or its Executive Director, at their discretion, shall determine and direct.

The foregoing resolution, upon motion duly made and seconded, was regularly adopted at the meeting of the Southeastern Wisconsin Regional Planning Commission held on the 4th day of December 1991, the vote being: Ayes 13; Nays 0.

Frank F. Uttech

Frank Uttech, Chairman

ATTEST:

Kurt W. Bauer

Kurt W. Bauer, Deputy Secretary

SEWRPC STAFF MEMORANDUM

RESPONSE TO REQUEST BY THE TOWN OF SALEM UTILITY DISTRICTS NOS. 1 AND 2 TO AMEND THE REGIONAL WATER QUALITY MANAGEMENT PLAN

INTRODUCTION

In a letter dated September 27, 1991, the Town of Salem, acting on behalf of the Town of Salem Utility Districts Nos. 1 and 2, requested that the Southeastern Wisconsin Regional Planning Commission amend the adopted regional water quality management plan. The purpose of the amendment would be to remove from the plan the designation of the public sewage treatment plant serving the Town of Salem Utility District No. 1 service area; to designate the Town of Salem Utility District No. 2 sewage treatment plant as the receiving facility for sewage from the Town of Salem Utility District No. 1 service area; to add to the plan a trunk sewer connecting the Town of Salem Utility District No. 1 service area to the Town of Salem Utility District No. 2 sewerage system; and to add selected areas to the Town of Salem Utility District No. 1 service area. The sanitary sewer service area attendant to the Town of Salem Utility District No. 1 sewage treatment facility is currently documented in SEWRPC Community Assistance Planning Report No. 145, Sanitary Sewer Service Area for the Town of Salem Utility District No. 1, Village of Paddock Lake, and Town of Bristol Utility District Nos. 1 and 1B, Kenosha County, Wisconsin.

The purpose of this memorandum is to provide the basis for the Commission's response to the request by the Town of Salem. In preparing this response, the Commission must apply the cost-effectiveness analysis guidelines promulgated by the U.S. Environmental Protection Agency (EPA) and the Wisconsin Department of Natural Resources (DNR). In this case, the issue involves whether or not it would be best to provide sewer service to the Town of Salem Utility District No. 1 service area through the construction of a new, or upgraded and expanded, public sewage treatment plant, or to connect the service area to the Town of Salem Utility District No. 2 sewerage system. This memorandum is intended to summarize the analyses conducted by the Commission staff bearing upon this issue and thereby provide a basis for a recommendation by the Commission in this matter. It is the responsibility of the Commission, as the gubernatorially designated areawide water quality planning agency under Section 208 of the federal Clean Water Act, to review this matter and to submit its findings and recommendations to the management agencies concerned, including, in this case, the Town Board of the Town of Salem, the Kenosha County Board, and the DNR.

In preparing this memorandum, the Commission staff independently evaluated the merits of the Town of Salem's request. In so doing, the Commission drew upon, as appropriate, information included in the report entitled, Town of Salem Utility District No. 1, Final Facility Plan, prepared by Graef, Anhalt, Schloemer and Associates, Inc., dated June 1991.

BACKGROUND INFORMATION

The Town of Salem Utility District No. 1 currently operates its own public sewage treatment plant. The plant is an activated sludge package plant facility with a capacity of 0.30 million gallons per day (mgd) on an average annual basis. The plant, which was constructed in 1969, has a peak flow capacity of approximately 0.60 mgd. Treatment processes incorporated into the plant include activated sludge, final settling, and chlorination, followed by an effluent holding pond. The treatment plant is located approximately 1,000 feet northeast of the intersection of 236th Avenue and 80th Place. The plant discharges effluent to the Salem Branch of Brighton Creek. The plant currently does not meet its permitted effluent limitations based upon documentation set forth in the aforementioned June 1991 local facility plan. The permit violations are related to peak flow demands which exceed the design capacity and the treatment processes used.

The adopted regional water quality management plan¹ currently envisions the indefinite operation of the Salem Utility District No. 1 treatment facility. However, the regional plan also recommended that this facility be monitored to assess its continued viability and cost effectiveness as the plant nears the end of its useful life.

The Town of Salem Utility District No. 2 operates a public sewage treatment plant constructed in 1981 which has a design capacity of 1.57 mgd on an average annual basis and 3.0 mgd on a peak flow capacity. The current loading to the plant is about 0.52 mgd on an average annual basis. The plant effluent is discharged to the Fox River.

ECONOMIC ANALYSIS OF ALTERNATIVES

Two basic alternatives were evaluated to determine the best way in which to provide continued treatment for sewage from the Town of Salem Utility District No. 1 sewer service area. The first alternative provides for maintaining a public sewage treatment plant to serve the Town of Salem Utility District No. 1. The second alternative provides for abandonment of the Town of Salem Utility District No. 1 sewage treatment plant and connection of the plant to the Town of Salem Utility District No. 2 sewerage system.

The Commission reviewed the economic analyses conducted by the consulting engineer for the Utility District and set forth in the document above. This independent review resulted in a finding that the economic analyses conducted by the consulting engineer were sound and provided an adequate basis for making a decision as to the most cost-effective alternative to provide sewage treatment services to the Town of Salem Utility District No. 1 sewer service area. Table 1 summarizes the findings of the economic analysis.

Under the first alternative of maintaining a separate treatment facility to serve the Town of Salem Utility District No. 1, subalternatives—Alternatives 1A and 1B—were evaluated, each relating to the type of treatment provided. In addition, four subalternatives were evaluated providing for different options conveying sewage from the Town of Salem Utility District No. 1 to the Town of Salem Utility District No. 2 sewerage facilities.

Under Alternatives 1A and 1B, the existing sewage treatment plant serving the Town of Salem Utility District No. 1 would be replaced with a new facility, as shown on Map 1. The plant would include a secondary treatment system followed by disinfection and effluent aeration with discharge of the plant effluent to the Salem Branch of Brighton Creek. Under Alternative 1A, the new plant would be an extended aeration activated sludge plant. Under Alternative 1B, the plant would utilize a sequence batch reactor plant. As shown on Table 1, the total capital cost of both of these subalternatives is estimated to be \$3,200,000. The average annual operation and maintenance cost over a 20-year design period is estimated at \$163,000. The equivalent annual cost is estimated to be \$515,000.

Alternatives 2A, 2B, 2C, and 2D all provide for the abandonment of the existing Town of Salem Utility District No. 1 sewage treatment plant. The costs of all four of these alternatives are similar. Alternative 2B includes the conveyance system and alignment preferred by the Town of Salem. Alternative 2B is shown on Map 2 and would provide for abandonment of the existing treatment plant; an upgrading and expansion of the existing lift station at the site of the Salem Utility District No. 1 sewage treatment plant; and the construction of a combination force main and gravity trunk sewer system from the existing plant site to the Town of Salem Utility District No. 2 sewerage system via an alignment along CTH AH, STH 83, and CTH C, with connection to the existing system in

¹*SEWRPC Planning Report No. 30, A Regional Water Quality Management Plan for Southeastern Wisconsin: 2000, June 1979.*

Table 1

ECONOMIC ANALYSIS COST ESTIMATES OF ALTERNATIVE SEWERAGE SYSTEM PLANS FOR THE TOWN OF SALEM UTILITY DISTRICT NO. 1

Alternative Plan Components	Initial Capital Cost ^a	20-Year Average Annual Operation and Maintenance Cost ^a	20-Year Present Worth ^b	20-Year Equivalent Annual Cost ^b
Alternative 1A—Replacement Sewage Treatment Plant Using Extended Aeration Activated Sludge Process	\$3,193,800	\$163,000	\$4,723,300	\$513,000
Alternative 1B—Replacement Sewage Treatment Plant Using Sequence Batch Reactor Process	3,236,700	163,000	4,761,700	517,000
Alternative 2A—Connection to the Town of Salem Utility District No. 2 Sewerage System—One Pumping Station Route 1	3,667,500 ^c	120,100	4,443,000	482,400
Alternative 2B—Connection to the Town of Salem Utility District No. 2 Sewerage System—One Pumping Station Route 2	3,790,000 ^c	120,100	4,583,500	497,600
Alternative 2C—Connection to the Town of Salem Utility District No. 2 Sewerage System—Two Pumping Stations Route 1	3,624,000 ^c	120,100	4,421,900	480,100
Alternative 2D—Connection to the Town of Salem Utility District No. 2 Sewerage System—Two Pumping Stations Route 2	3,643,000 ^c	120,100	4,430,000	481,000

^aCost data attendant to the alternatives in this table were obtained from a sewerage facilities plan prepared by Graef Anhalt Schloemer & Associates, Inc., dated June 1991. The Commission independently reviewed this sewerage facilities plan and found the findings of the analyses were sound and provided an adequate basis for decision making.

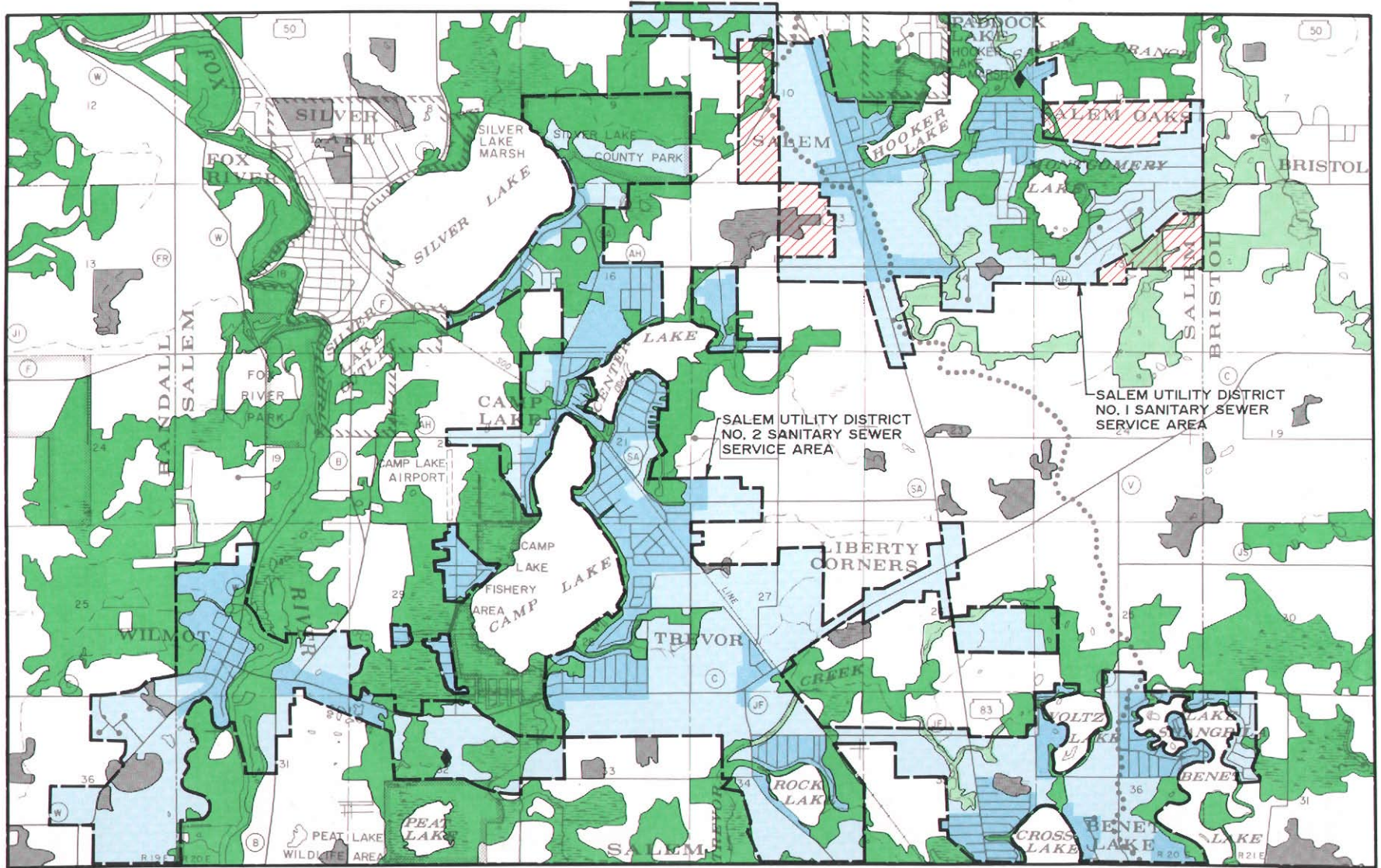
^bEconomic analyses in the local sewerage facilities plan were based upon a 20-year period of analysis and an 8-7/8 percent interest rate. A supplemental analysis was conducted by the Commission using a 50-year period of analysis and a 6 percent interest rate, the analysis period and interest rate used in making the 1979 regional water quality management plan. This supplemental analysis confirmed the analysis set forth in this table.

^cOf this total capital cost, \$225,000, to provide for hydraulic capacity upgrading at the Town of Salem Utility District No. 2 plant, would be deferred for 10 years.

Source: SEWRPC.

ALTERNATIVES 1A AND 1B: MAINTAIN SALEM UTILITY DISTRICT NO. 1 SEWAGE TREATMENT PLANT

4



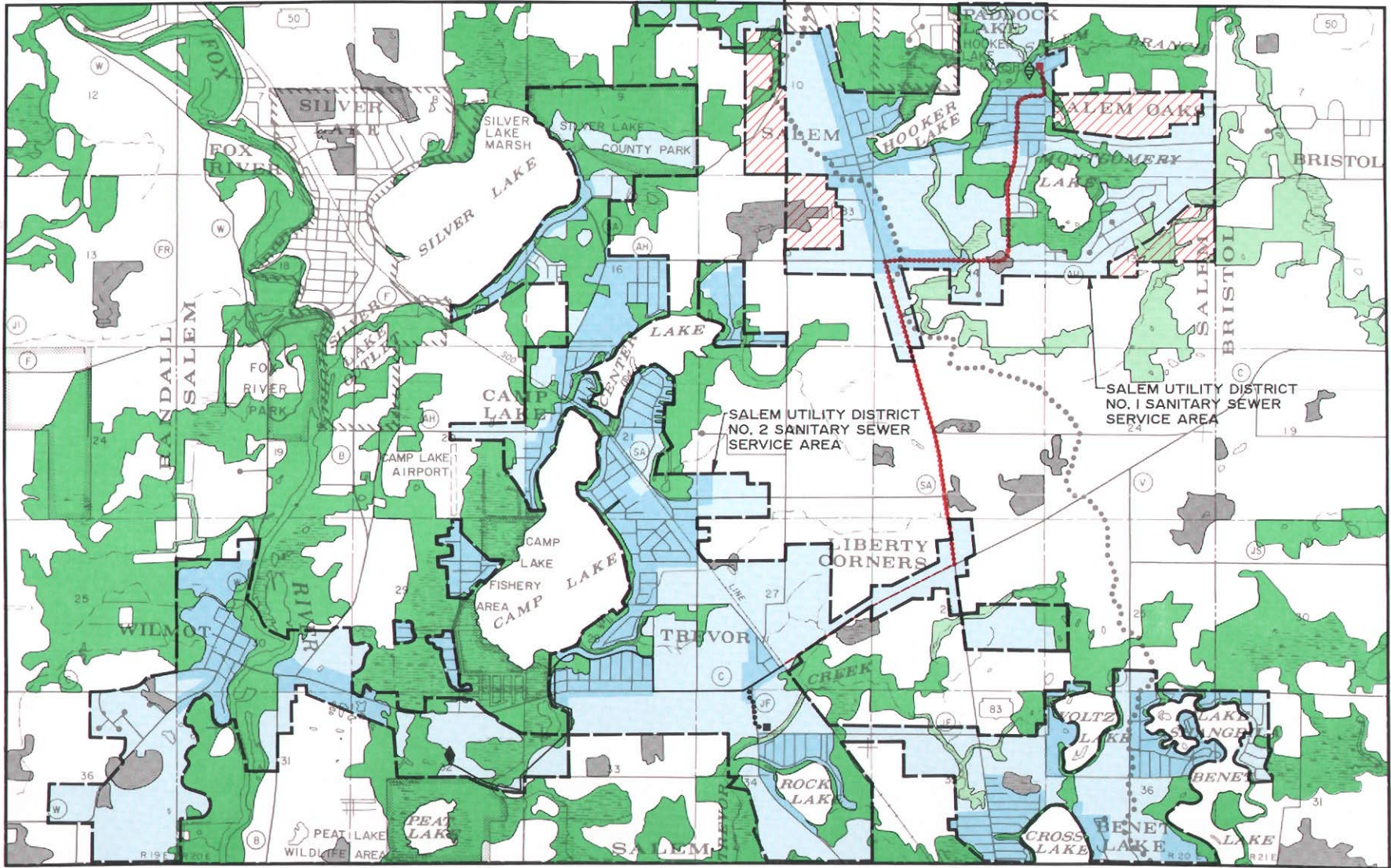
LEGEND

- | | | | |
|---|--|---|--|
|  | PRIMARY ENVIRONMENTAL CORRIDOR |  | NET SANITARY SEWER SERVICE AREA (EXISTING) |
|  | SECONDARY ENVIRONMENTAL CORRIDOR |  | NET SANITARY SEWER SERVICE AREA (2000) |
|  | ISOLATED NATURAL AREA |  | EXISTING SEWAGE TREATMENT PLANT TO BE MAINTAINED |
|  | GROSS SANITARY SEWER SERVICE AREA BOUNDARY |  | LANDS TO BE ADDED TO THE SALEM SANITARY SEWER SERVICE AREA |
















Source: SEWRPC.

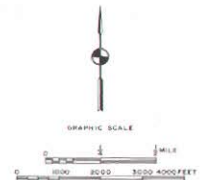


ALTERNATIVE 2B: CONNECTION TO SALEM UTILITY DISTRICT NO. 2
VIA PUMPING STATION, FORCE MAIN, AND GRAVITY SEWER



LEGEND

- | | | | | | |
|---|--|---|--|---|--|
|  | PRIMARY ENVIRONMENTAL CORRIDOR |  | NET SANITARY SEWER SERVICE AREA (EXISTING) |  | EXISTING PUMPING STATION |
|  | SECONDARY ENVIRONMENTAL CORRIDOR |  | NET SANITARY SEWER SERVICE AREA (2000) |  | EXISTING FORCE MAIN |
|  | ISOLATED NATURAL AREA |  | EXISTING SEWAGE TREATMENT PLANT TO BE MAINTAINED |  | EXISTING GRAVITY SEWER |
|  | GROSS SANITARY SEWER SERVICE AREA BOUNDARY |  | EXISTING SEWAGE TREATMENT PLANT TO BE ABANDONED |  | PROPOSED PUMPING STATION |
| | | | |  | PROPOSED FORCE MAIN |
| | | | |  | PROPOSED GRAVITY SEWER |
| | | | |  | LANDS TO BE ADDED TO THE SALEM SANITARY SEWER SERVICE AREA |



the vicinity of CTH C east of 264th Avenue, all as shown on Map 2. As shown in Table 1, the total capital cost of this alternative is estimated to be \$3,790,000, of which \$225,000 would be deferred for ten years. The average annual operation and maintenance cost over a 20-year design period is estimated at \$120,000. The equivalent annual cost is estimated to be \$498,000.

Each of the alternatives was evaluated to determine the most cost-effective alternative; that is, identifying the alternative that would result in the least investment of public funds for both capital and operation and maintenance purposes over a 20-year period. This analysis indicated that the four alternatives of connecting the Town of Salem Utility District No. 1 service area to the Town of Salem Utility District No. 2 sewerage system were less costly than the two alternatives providing for the construction of a new sewage treatment plant at the site of the existing sewage treatment plant to serve the Town of Salem Utility District No. 1. The costs of all of the alternatives evaluated were, however, within 10 percent of each other.

Based upon the cost effectiveness, environmental, fiscal, and implementation impacts analyses conducted, the Town Board recommended the abandonment of the existing Town of Salem Utility District No. 1 sewage treatment plant; an upgrading and expansion of the existing lift station at the site of the Salem Utility District No. 1 sewage treatment plant; and the construction of a combination force main and gravity trunk sewer system from the existing plant site to the Town of Salem Utility District No. 2 sewerage system.

TOWN OF SALEM UTILITY DISTRICT NO. 1 PLANNED SEWER SERVICE AREA

The aforementioned June 1991 facility plan recommends that the year 2010 sewer service area for the Town of Salem Utility District No. 1 be expanded by the addition of four areas to the currently approved year 2000 sewer service area documented in the aforementioned sewer service area plan.

As shown on Maps 1 and 2, the four areas that are proposed to be added to the Town of Salem Utility District No. 1 sanitary sewer service area together encompass approximately 437 acres. The four areas are located in U.S. Public Land Survey Sections 10, 12, 13, and 15, Township 1 North, Range 20 East, Town of Salem, Kenosha County, Wisconsin. A more detailed delineation of the revised sewer service area for these four areas, and of the environmentally significant lands therein, is shown on aerial photographs reproduced as Maps 3, 4, 5, and 6.

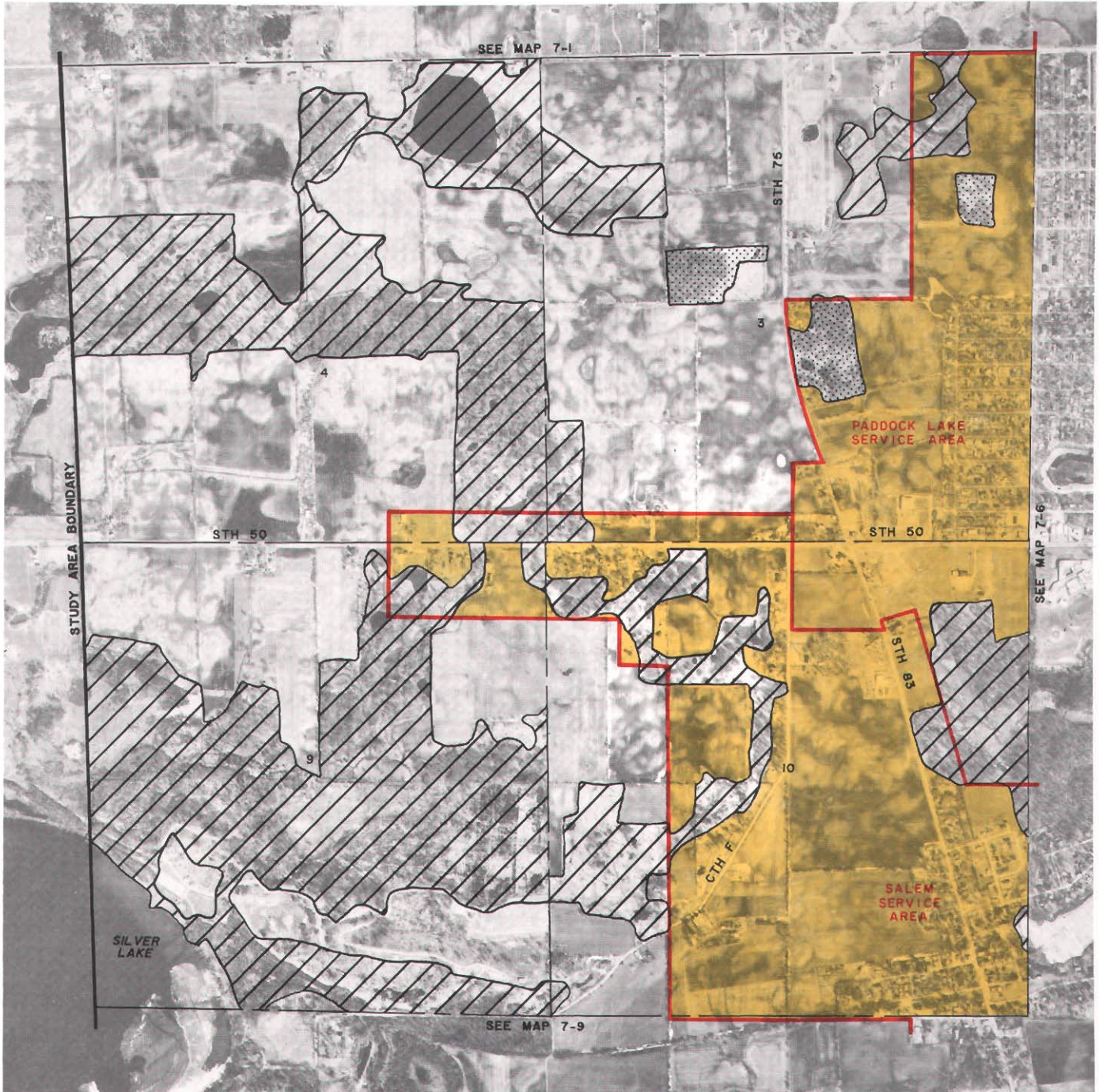
At the present time, the subject areas include about six acres encompassing two single-family housing units and associated farm buildings, about 26 acres of primary environmental corridor lands, about 36 acres of secondary environmental corridor lands, and about 20 acres of isolated natural area lands. The remaining 349 acres consist of prime agricultural and other open space lands. It is envisioned that no intensive urban uses will occur within the primary or secondary environmental corridors, or within the isolated natural area lands, and that the undeveloped lands within the subject areas will be developed for as yet unspecified urban land uses.

The revised year 2010 Town of Salem Utility District No. 1 sanitary sewer service area, including the subject additional areas, would encompass about 3.5 square miles and would include about 0.8 square mile of primary environmental corridor, about 0.2 square mile of secondary environmental corridor, and less than 0.1 square mile of isolated natural area. Thus, about 1.0 square mile, or about 29 percent of the revised sewer service area, would be comprised of environmentally significant lands. The revised overall estimated residential density within the Town of Salem Utility District No. 1 sewer service area would approximate 0.7 housing units per net residential acre. This density represents the low end of the recommended density range for the Town of Salem Utility District No. 1 area of the Region as identified in the adopted regional land use and regional water quality management plans. Accordingly, any additional proposals to add developable land to the planned Salem sewer service area would have to be accompanied by deletions of other land currently lying within the planned area.





Map 3

ENVIRONMENTALLY SIGNIFICANT LANDS AND PLANNED SANITARY SEWER SERVICE AREA FOR THE SALEM/PADDOCK LAKE/BRISTOL AREA

U. S. Public Land Survey Sections 3, 4, 9, and 10
Township 1 North, Range 20 East



LEGEND

-  PRIMARY ENVIRONMENTAL CORRIDOR
-  ISOLATED NATURAL AREA
-  PLANNED SANITARY SEWER SERVICE AREA
-  GROSS SANITARY SEWER SERVICE AREA BOUNDARY

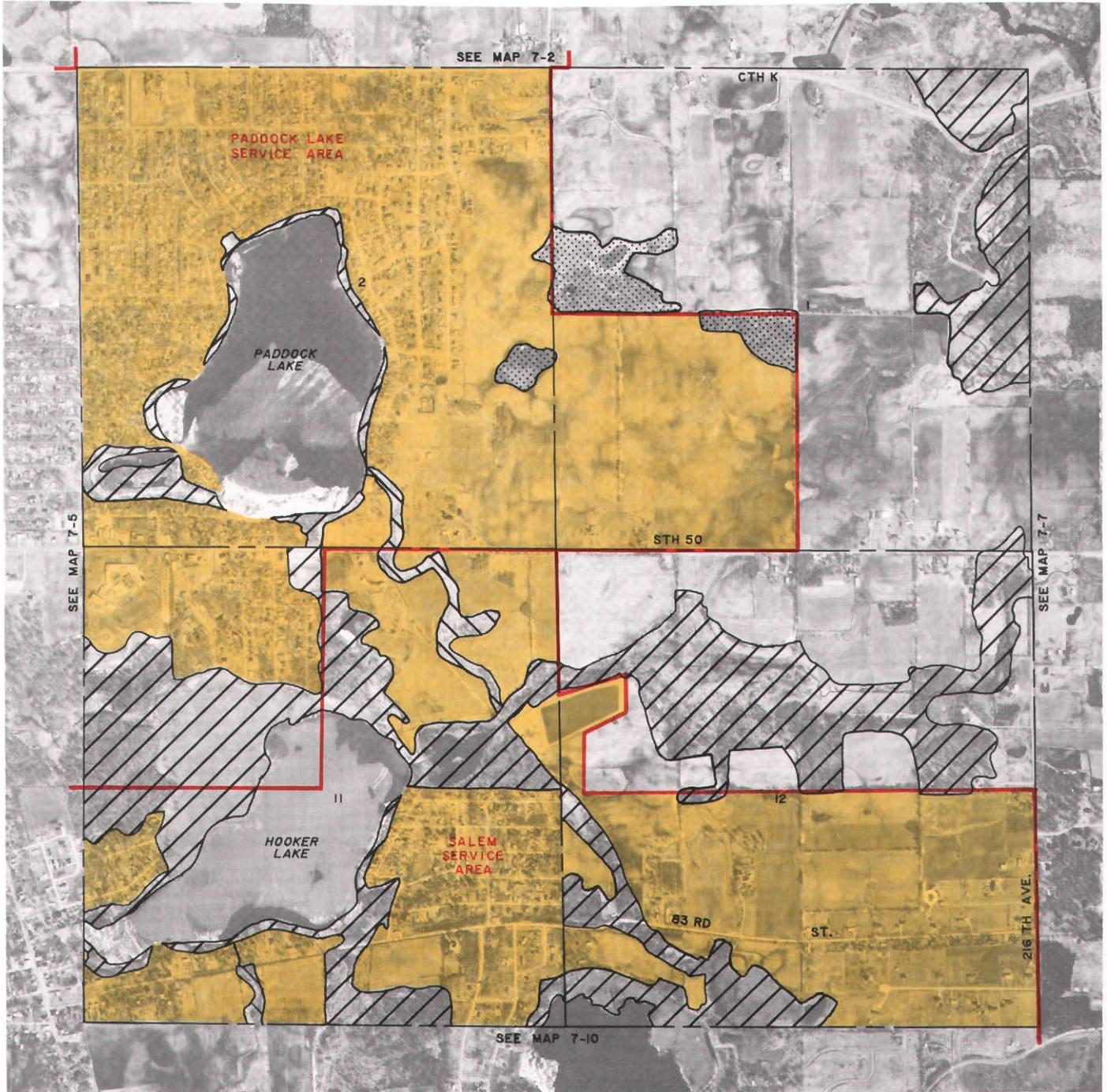
NOTE: This map replaces Map 7-5, page 30, SEWRPC Community Assistance Planning Report No. 145, Sanitary Sewer Service Area for the Town of Salem Utility District No. 1, Village of Paddock Lake, and Town of Bristol Utility District No. 1 and 1B, Kenosha County, Wisconsin.



Map 4

ENVIRONMENTALLY SIGNIFICANT LANDS AND PLANNED SANITARY SEWER SERVICE AREA FOR THE SALEM/PADDOCK LAKE/BRISTOL AREA

U. S. Public Land Survey Sections 1, 2, 11, and 12
Township 1 North, Range 20 East



LEGEND

-  PRIMARY ENVIRONMENTAL CORRIDOR
-  SECONDARY ENVIRONMENTAL CORRIDOR
-  ISOLATED NATURAL AREA
-  PLANNED SANITARY SEWER SERVICE AREA
-  GROSS SANITARY SEWER SERVICE AREA BOUNDARY

NOTE: This map replaces Map 7-6, page 31, SEWRPC Community Assistance Planning Report No. 145, Sanitary Sewer Service Area for the Town of Salem Utility District No. 1, Village of Paddock Lake, and Town of Bristol Utility District No. 1 and 1B, Kenosha County, Wisconsin.

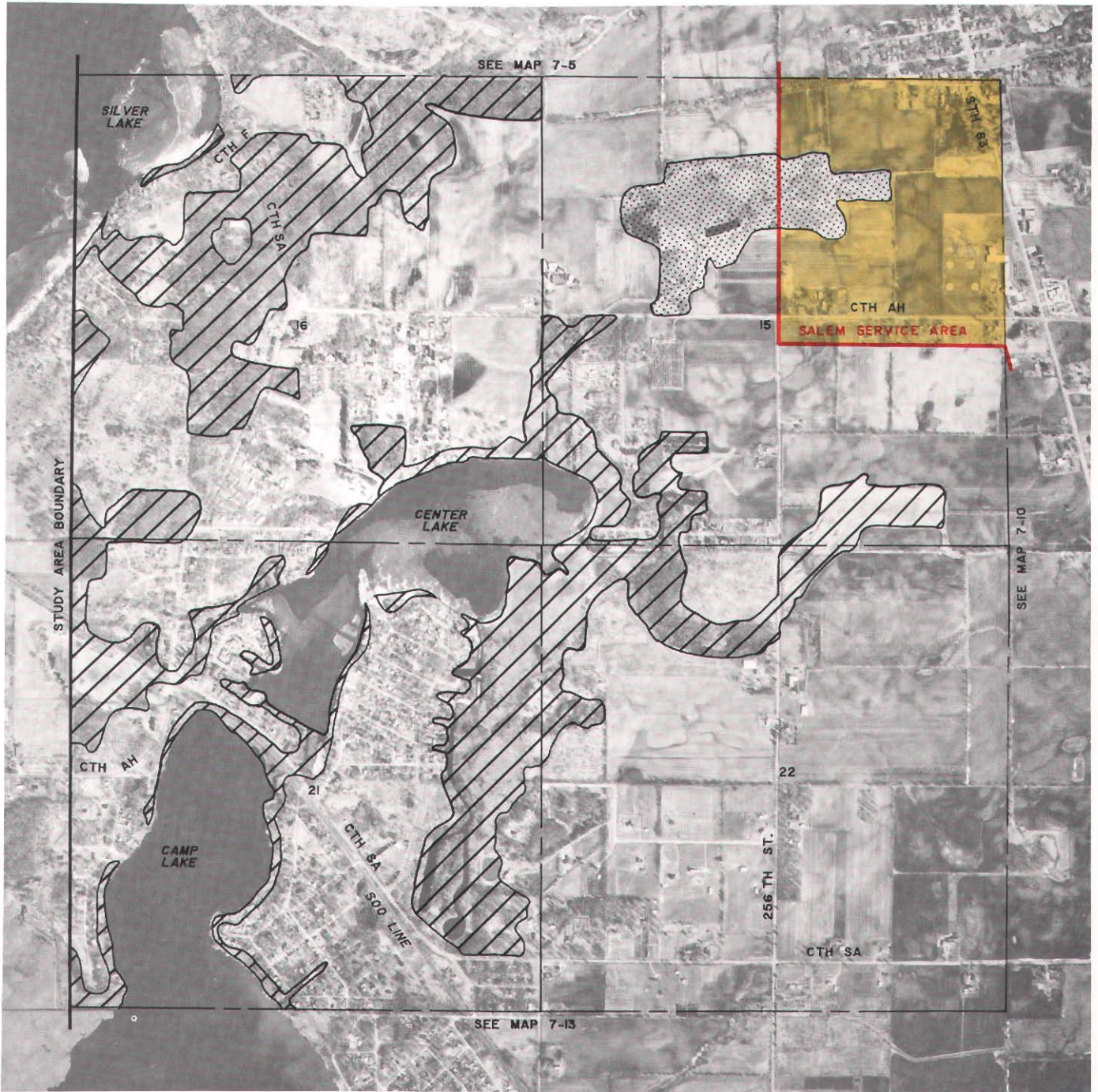


Source: SEWRPC.





Map 5

ENVIRONMENTALLY SIGNIFICANT LANDS AND PLANNED SANITARY SEWER SERVICE AREA FOR THE SALEM/PADDOCK LAKE/BRISTOL AREA

U. S. Public Land Survey Sections 15, 16, 21, and 22
Township 1 North, Range 20 East



LEGEND

-  PRIMARY ENVIRONMENTAL CORRIDOR
-  ISOLATED NATURAL AREA
-  PLANNED SANITARY SEWER SERVICE AREA
-  GROSS SANITARY SEWER SERVICE AREA BOUNDARY

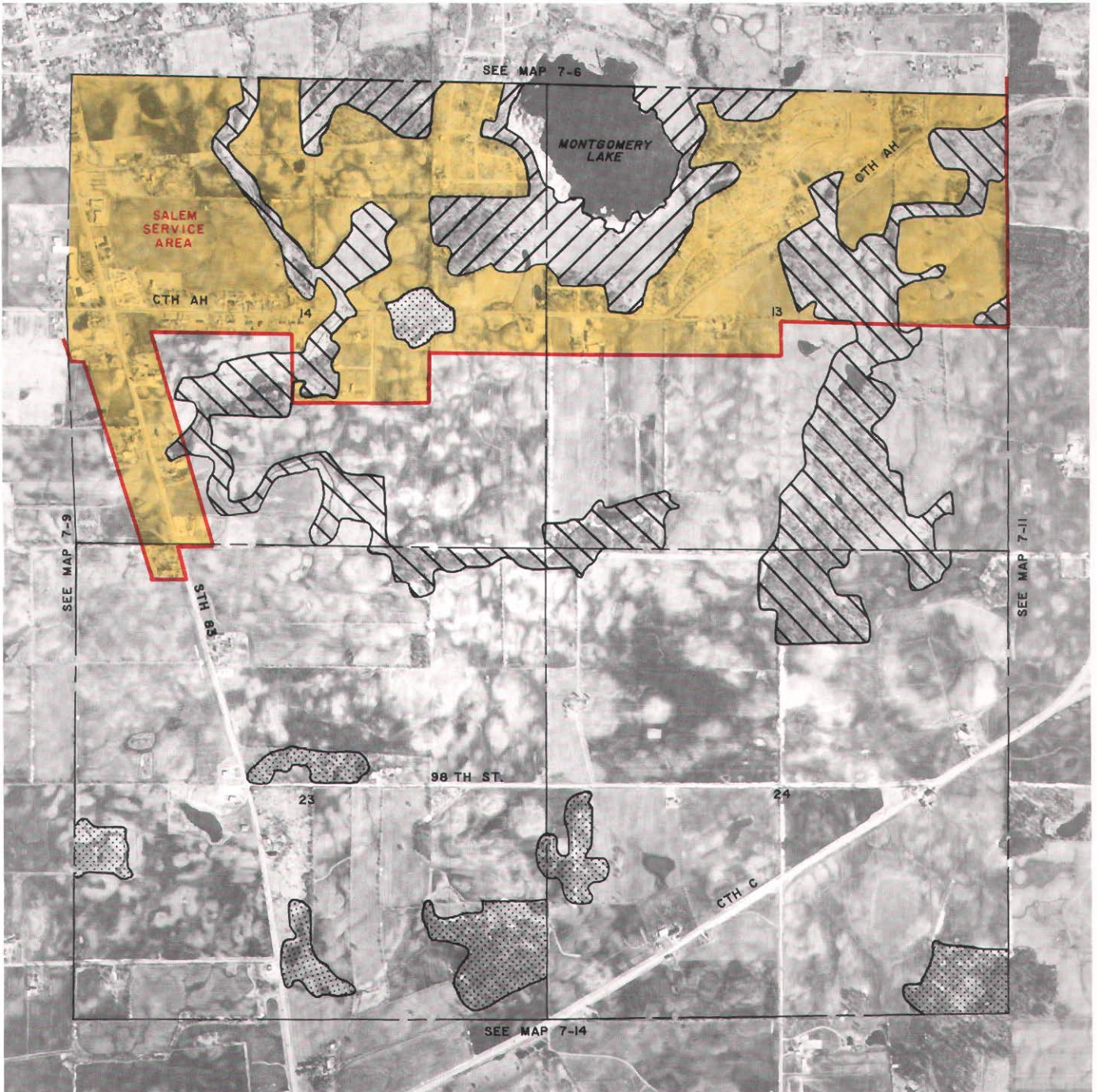
NOTE: This map replaces Map 7-9, page 34, SEWRPC Community Assistance Planning Report No. 145, Sanitary Sewer Service Area for the Town of Salem Utility District No. 1, Village of Paddock Lake, and Town of Bristol Utility District No. 1 and 1B, Kenosha County, Wisconsin.








Map 6

ENVIRONMENTALLY SIGNIFICANT LANDS AND PLANNED SANITARY SEWER SERVICE AREA FOR THE SALEM/PADDOCK LAKE/BRISTOL AREA

U. S. Public Land Survey Sections 13, 14, 23, and 24
Township 1 North, Range 20 East



LEGEND

-  PRIMARY ENVIRONMENTAL CORRIDOR
-  SECONDARY ENVIRONMENTAL CORRIDOR
-  ISOLATED NATURAL AREA
-  PLANNED SANITARY SEWER SERVICE AREA
-  GROSS SANITARY SEWER SERVICE AREA BOUNDARY

NOTE: This map replaces Map 7-10, page 35, SEWRPC Community Assistance Planning Report No. 145, Sanitary Sewer Service Area for the Town of Salem Utility District No. 1, Village of Paddock Lake, and Town of Bristol Utility District No. 1 and 1B, Kenosha County, Wisconsin.



Source: SEWRPC.

SEWAGE TREATMENT PLANT CAPACITY IMPACT ANALYSIS

The present hydraulic capacity of the Town of Salem Utility District No. 2 sewage treatment plant is 1.57 mgd on an average annual basis. The current average hydraulic loading on the plant is about 0.57 mgd on an average flow basis. Projected future—year 2010—average daily hydraulic loading from the presently designated Town of Salem Utility District No. 2 sewer service area is estimated to be 0.97 mgd on an average daily flow basis.

The Town of Salem Utility District No. 1 sewer service area is expected to have a year 2010 hydraulic loading of 0.30 mgd on an average daily flow basis. With the addition of this area to the Town of Salem Utility District No. 2 sewage treatment plant, that plant would continue to have ample excess capacity through the year 2010.

PUBLIC REACTION TO THE PLAN AMENDMENT

A public hearing was held on March 28, 1991, at the Salem Town Hall to receive public comment on, and reaction to, the facility plan prepared by the Town of Salem Utility District No. 1. A summary of the public hearing minutes, as well as other public participation activities is reproduced in the aforementioned June 1991 facility plan. In general, there was limited comment at the public hearing on the alternatives or recommended plan. Most of the comments dealt with the alternate means of financing the recommended project and the governance alternatives for the two Town Utility Districts.

Subsequent to the public hearing, the Town Board approved the facility plan at a meeting held on April 18, 1991.

CONCLUDING REMARKS

Based upon the foregoing findings and analyses, the Commission staff recommends that the Commission formally amend the regional water quality management plan in the following respects:

1. Remove from the plan the current designation of the Town of Salem Utility District No. 1 sewage treatment facility as a public sewage treatment plant with discharge of treated sewage effluent to Brighton Creek.
2. Designate the Town of Salem Utility District No. 2 sewage treatment facility as the receiving plant for sewage from the Town of Salem Utility District No. 1 sewer service area.
3. Add to the plan a trunk sewer, having an alignment and configuration substantially as identified on Map 2 that would provide for conveyance of sewage from the Town of Salem Utility District No. 1 sewer service area to the Town of Salem Utility District No. 2 sewerage system.
4. Amend the sewer service area for the Town of Salem Utility District No. 1 in the manner shown on Map 1.