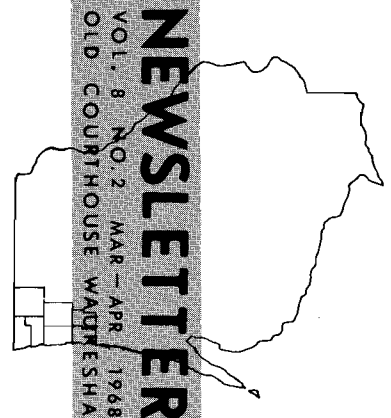


MILWAUKEE RIVER WATERSHED STUDY UNDERWAY

A three-year comprehensive study of the Milwaukee River watershed has begun. The study, as recommended by the Milwaukee River Watershed Committee in a prospectus published by the Commission in September 1966, represents the third comprehensive watershed planning program to be undertaken by the Commission for a major watershed in the Region. The first of these watershed planning programs, for the Root River watershed, was completed in July 1966. The results were published in SEWRPC Planning Report No. 9, A Comprehensive Plan for the Root River Watershed. The second watershed planning program, for the Fox River watershed, was begun in November 1965 and is now in the alternative plan preparation stage. In addition, and pursuant to requests by the City of Wauwatosa, the City of Brookfield, and Milwaukee County, a watershed committee is being formed to study and analyze the problems of the Menomonee River watershed. The major watersheds of the Region and their status with respect to comprehensive watershed planning are shown on Map 1.

The Milwaukee River Watershed Study is designed to provide a comprehensive, long-range plan for the solution of the following major resource-related problems existing within this important watershed: 1) water pollution, 2) inadequate soil and water conservation and management practices,

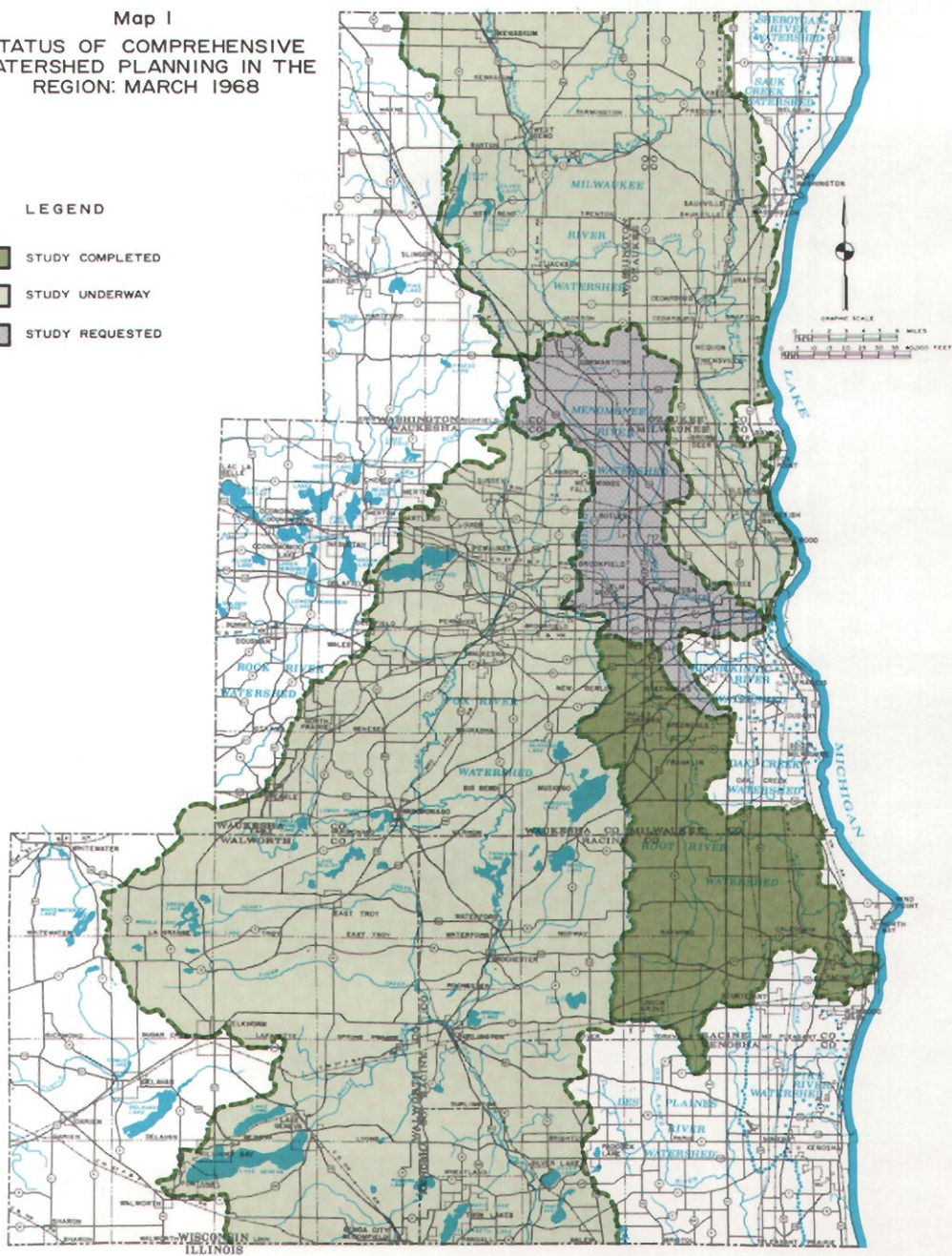
**SOUTHEASTERN
WISCONSIN
REGIONAL
PLANNING
COMMISSION**



Map 1
STATUS OF COMPREHENSIVE
WATERSHED PLANNING IN THE
REGION: MARCH 1968

LEGEND

- STUDY COMPLETED
- STUDY UNDERWAY
- STUDY REQUESTED



MILWAUKEE RIVER WATERSHED—continued

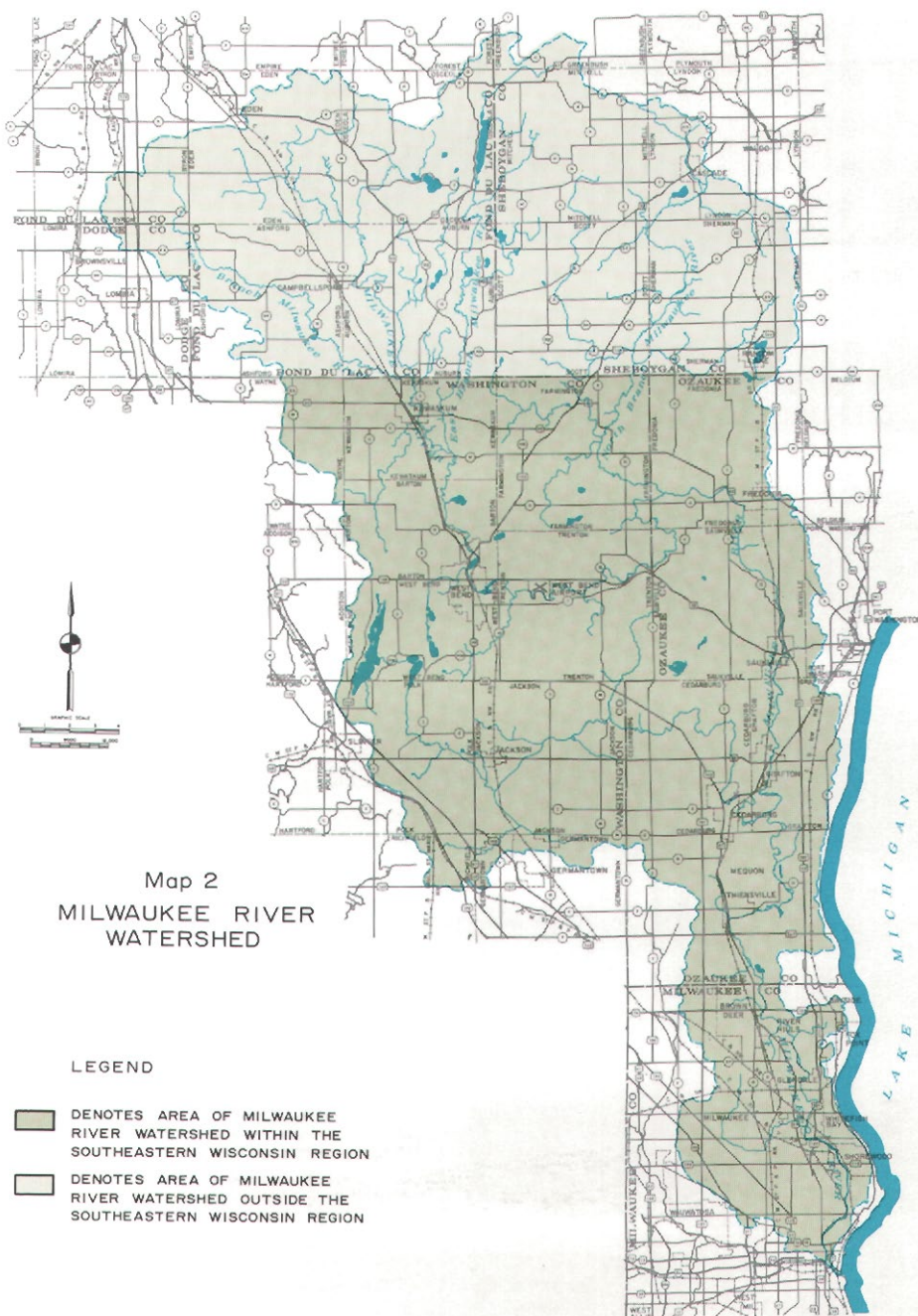
3) deteriorating fish and wildlife habitat, 4) flooding and flood damages, 5) open space and recreation needs, 6) ground water supply, and 7) changing land use. These resource problems of the watershed were defined by the Milwaukee River Watershed Committee in the prospectus. It was recognized at that time that the problems were highly inter-related and that effective solutions could be found only within the framework of a comprehensive planning program that would recognize the watershed as an integrated land-water resource unit having a complex community of interest among its residents.

Study Funding

As in the two previous watershed planning studies, the cost of conducting the Milwaukee River watershed planning program will be shared by the Federal Government and the counties that are involved. In addition, the State of Wisconsin, through the Department of Natural Resources, has agreed to provide state funds to cover about one-third of the cost of the study. Since nearly two-fifths of the watershed lies outside the Southeastern Wisconsin Region, primarily in Fond du Lac and Sheboygan counties, as shown on Map 2, and since a sound planning program for the watershed would necessarily require inclusion of that area, the above two counties were asked, and subsequently agreed, to participate fully in the study.

The total cost of the three-year study will be \$516,976. The cost allocation, which has been approved by all participating agencies, is as follows:

U. S. Department of Housing and Urban Development	\$151,983.00 ^a
U. S. Department of the Interior	117,800.00
Wisconsin Department of Natural Resources	171,200.00
Fond du Lac County	2,781.00



MILWAUKEE RIVER WATERSHED—continued

Milwaukee County	54,993.00
Ozaukee County	7,161.00
Sheboygan County	4,788.00
Washington County	6,270.00
Total	<hr/> \$516,976.00

^a *Made available to the study by the Wisconsin Department of Natural Resources from federal funds granted to it pursuant to the Water Resources Planning Act of 1965 and the Federal Water Pollution Control Act.*

Pursuant to established Commission practice, the county obligations are allocated according to relative assessed valuation within the watershed.

Study Organization

The Milwaukee River Watershed Study has been organized as a cooperative interagency program involving all levels and agencies of government concerned with land and water use in the watershed. The SEWRPC is responsible for the overall conduct and coordination of the study and for the accomplishment of all basic data studies which might logically be considered of a general regional planning nature, including land use, economic activity, population, public utilities inventory, and any other data that has been developed in other Commission work programs.

The Commission has retained the Harza Engineering Company, Chicago, Illinois, as the prime consultant in the watershed study. The Harza Company, an engineering firm which specializes in water resource planning and development, has assisted the Commission in both the completed Root River watershed and in the ongoing Fox River watershed planning programs. As a consultant to the study, Harza will be primarily responsible for technical studies and analyses dealing with the problems of water pollution and flood damage, including hydrologic and hydraulic investigations and the preparation of flood hazard and land reservation maps. The Commission has also employed the photogrammetric engineering firm of Alster and Associates, Inc., Madison, Wis-

MILWAUKEE RIVER WATERSHED—continued

consin, to perform control surveys necessary to establish second-order bench marks along the stream channels and to carry out the necessary hydraulic capacity inventories. The latter involves the survey of approximately 220 bridges, culverts, and dams in order to establish the dimensions and elevations of the waterway openings.

In addition to contractual arrangements with the two engineering firms, the Commission has entered into cooperative agreements with the Wisconsin Department of Natural Resources, Division of Conservation; the U. S. Department of Agriculture, Soil Conservation Service; and the U. S. Department of the Interior, Geological Survey. The Division of Conservation will perform inventories and analyses necessary to fulfill the needs of the fish and game and park and recreation studies for the watershed. The Soil Conservation Service, which had previously completed detailed operational soil surveys for the entire Region, will accelerate its soil survey work in Dodge, Fond du Lac, and Sheboygan counties, so that uniform soil information will be available for the entire watershed. The Geological Survey will perform basic ground water data studies.

The adoption of plan design criteria and standards, the evaluation of alternative watershed plans, and the selection of the final plan, including the necessary public hearings, will be the joint responsibility of the SEWRPC, the participating consultants and agencies, and the Milwaukee River Watershed Committee.

Milwaukee River Watershed Committee

The Milwaukee River Watershed Committee, which directed the preparation of the planning program prospectus, will continue to advise the SEWRPC staff, the consultants, and the participating agencies during the conduct of the study. The Committee will meet periodically to review and approve the study procedures and monitor study progress. Members of the Milwaukee River Watershed Committee are:

MILWAUKEE RIVER WATERSHED—continued

Richard W. Cutler,
Chairman
R. D. Ziegler,
Vice-Chairman
Ray F. Blank

Delbert J. Cook
Nick R. Didier
Herbert A. Goetsch

Howard W. Gregg

Leroy W. Grossman
George E. Guell
Wilbert Halbach
Dr. Carlton M. Herman
Gilbert J. Howard
John T. Justen

J. Bryan Keating

John L. Kratz
Ray D. Leary

Dean Livingston

Reuben Lueloff
Bernard McGinley
Carl Otte
L. N. Peterson

Harold A. Reinecke
E. M. Romaine

Fred Schmit
Roland Schomberg
George Watts
Donald W. Webster
James Wren-Jarvis

D. W. Young

SEWRPC Commissioner

Vice-President, West Bend Company
SEWRPC Commissioner; Chairman,
Ozaukee County Board of Supervisors
Cedar Creek Restoration Council
Realtor

Commissioner of Public Works,
City of Milwaukee
General Manager, Milwaukee County
Park Commission

President, Capitol Marine Bank
Fond du Lac County Board Supervisor
Fond du Lac County Board Supervisor
SEWRPC Commissioner

Fond du Lac County Board Supervisor
Vice-President, Pfister & Vogel
Tanning Company

Work Unit Conservationist, Soil
Conservation Service
Washington County Board Supervisor
General Manager, Milwaukee-Metro-
politan Sewerage Commissions

Work Unit Conservationist, Soil
Conservation Service

President, Village of River Hills
County Agent, Sheboygan County
Sheboygan County Board Supervisor
Executive Vice-President, Regal
Ware, Inc.

County Agent, Fond du Lac County
Chairman, Washington County Board
of Supervisors

Citizen Member
County Clerk, Sheboygan County
President, George Watts & Sons
Consulting Civil Engineer
Director, Region 2, Wisconsin Division
of Resource Development
Resident Manager, St. Regis Paper
Company

MILWAUKEE RIVER WATERSHED—continued

This advisory committee will have a particularly important role in the selection of the final Milwaukee River watershed plan and in assuring its financial and administrative feasibility. The Milwaukee River Watershed Committee will also work closely with the various citizen groups active in the watershed, such as the Milwaukee River and Cedar Creek Restoration Councils, so that all efforts to combat pollution problems in the watershed will be coordinated.

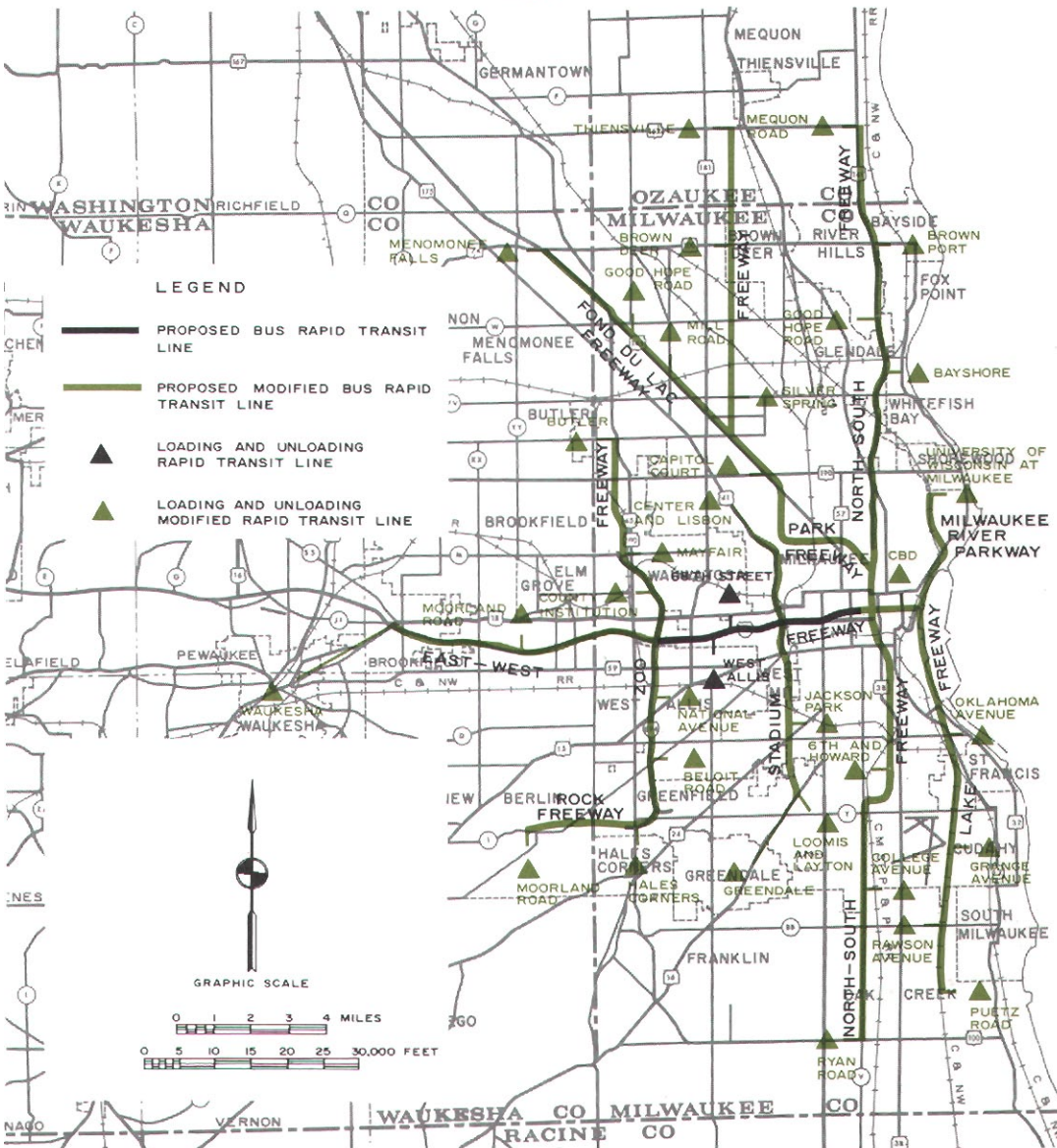
SEWRPC NOTES

RAPID TRANSIT STUDY FUNDED

The U. S. Department of Housing and Urban Development and the U. S. Department of Transportation, Bureau of Public Roads, have announced approval of a federal grant application submitted by the Milwaukee County Expressway and Transportation Commission in partial support of a two-year engineering study designed to prepare preliminary plans for the rapid transit and modified rapid transit proposals contained in the adopted regional transportation plan. The study will refine and detail the regional transit plan, which will comprise a most important step toward plan implementation. The study will determine the geometric design of the facilities, the location and size of appurtenant parking lots, the operational characteristics of the system, and the right-of-way requirements. Most importantly, it will recommend a fare structure and organizational arrangements for operation of the system. Map 3 shows the extent of the transit system as proposed in the regional plan.

The Milwaukee and Suburban Transport Company, the Regional Planning Commission, and Barton-Aschman, Inc., a private engineering consultant headquartered in Chicago, will collaborate with the Milwaukee County Expressway and Transportation Commission in the conduct of the study. The Milwaukee County Board is providing the necessary local

PROPOSED REGIONAL MODIFIED RAPID AND RAPID TRANSIT SYSTEM
1990



funding. Mr. Robert W. Brannan, Milwaukee County Expressway Engineer, will serve as Study Director. Mr. George C. Berteau, Chairman of SEWRPC, and Mr. Kurt W. Bauer, Executive Director, have been appointed to advisory committees for the study.

JURISDICTIONAL HIGHWAY PLANS UNDERWAY

With the advice and assistance of the Wisconsin Department of Transportation, Division of Highways, and the Regional Planning Commission, the counties of Milwaukee, Ozaukee, and Racine are currently preparing jurisdictional plans for the provision and maintenance of the arterial highway system for their respective counties as proposed in the recommended and adopted regional transportation plan. The regional transportation plan is a "functional" plan, which identified the existing arterial street and highway system, determined its existing and probable future deficiencies, and recommended specific additions and improvements required to adequately serve existing and forecast travel demands.

The county jurisdictional highway plans will convert the functional highway plan to an action-oriented program designed to implement the functional plan by classifying the various facilities comprising the total arterial street and highway system into logical subsystems and assigning jurisdictional responsibility for these subsystems to the various levels and units of government concerned. The county jurisdictional plans will thus specify the governmental level and unit which should have responsibility for acquiring, constructing, maintaining, and operating each of the existing and proposed facilities which comprise the total arterial system and will provide state and county trunk highway plans for each county involved.

LIBRARY PLAN PROSPECTUS COMPLETED

A prospectus for a regional library planning program for the Southeastern Wisconsin Region has been completed and submitted to the Com-

mission for its consideration and approval. The prospectus, prepared over the past year by a Technical Advisory Committee on Library Planning, with assistance from SEWRPC staff, outlines the need for a regional library facilities and services plan and presents the major work elements of, and organization for, a comprehensive regional library planning program, along with the estimated costs of such a program and a recommended time schedule and staff arrangement. A plan for library facilities and services would constitute a major subcomponent of a regional public facilities plan, which, in turn, represents an important element of a comprehensive plan for the physical development of the Region.

CENSUS TRACT APPROVAL

Notification has been received from the U. S. Bureau of the Census that final approval has been given to the census tract plans for Ozaukee, Walworth, and Washington counties. Local census tract committees in these counties prepared the census tract plans with assistance from the SEWRPC staff. Map 4 shows, as an example, the census tract plan for Ozaukee County. Approval of the census tract plans ensures that the 1970 Census data will be available on a tract basis for the entire Region.

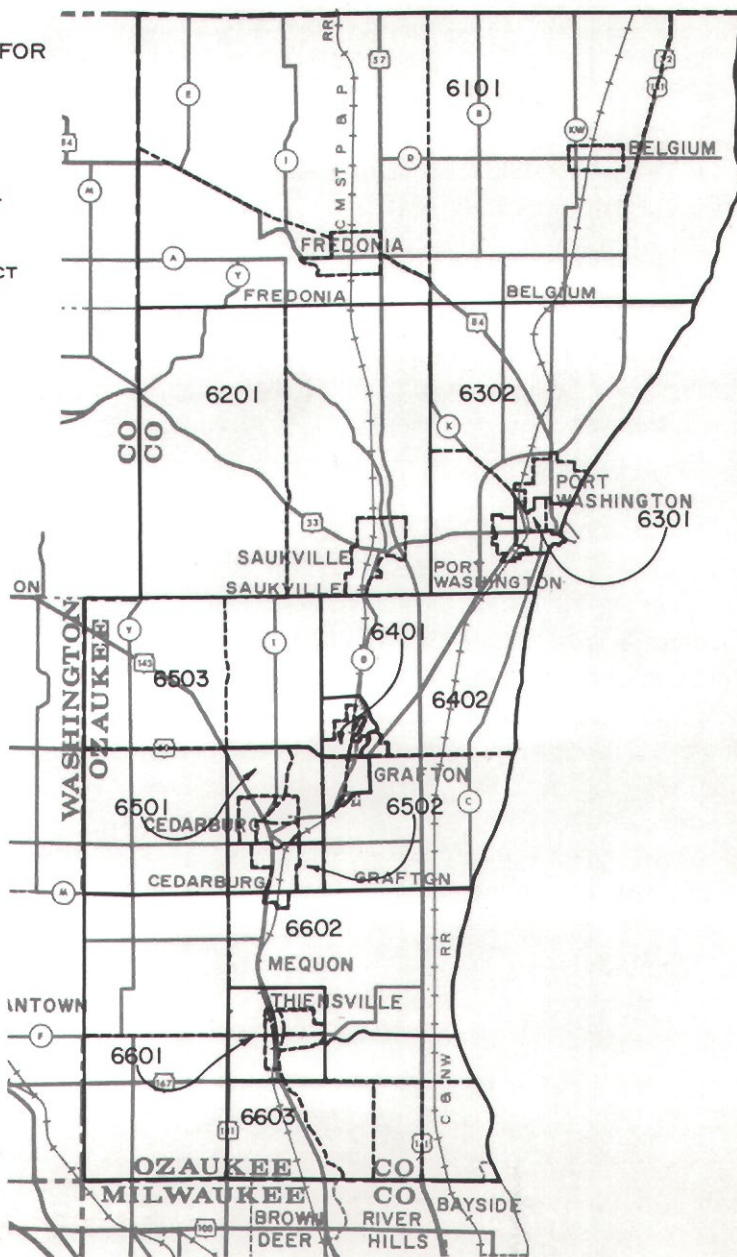
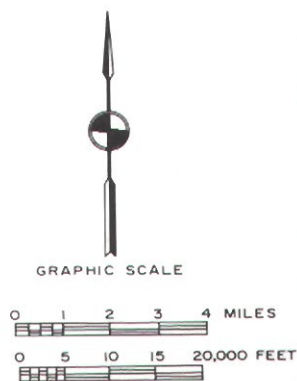
The basic purpose of census tracting is to establish within metropolitan areas and their environs small geographical areas that can be used for statistical summaries and analyses of census data. It is intended that the boundaries of these areas remain relatively stable over time so that statistical comparisons can be made from census to census and from year to year. Historical comparability of small area data is thus the chief attribute of the census tract.

FOX RIVER WATERSHED STUDY PROGRESS REPORT

With the Fox River Watershed Study now in the final year of a three-year planning period, the Steering Committee, chaired by Mr. William D. Rogan, Waukesha County Agri-Business Agent, has been meeting recently to review and comment on preliminary drafts of chapters of the

Map 4
CENSUS TRACT PLAN FOR
OZAUKEE COUNTY

LEGEND
 — 1970 CENSUS TRACT
 BOUNDARY
 - - - - - PROPOSED 1970
 ENUMERATION DISTRICT
 BOUNDARY
 6101 1970 CENSUS TRACT
 NUMBER



final planning report. Several chapters dealing with basic planning inventories and analyses, such as the natural resource base, the socio-economic base, hydrology, water quality and pollution, and flood characteristics and damages, have been reviewed and approved by the Committee.

The Fox River Watershed Study, designed to culminate in a comprehensive plan for the physical development of the watershed encompassing drainage, flood control, and pollution abatement measures, is scheduled for completion in December 1968. It is anticipated that the final planning report will be published in two volumes and that the first volume, containing chapters on inventories and analyses, will be available early this fall. The second volume, containing the forecasts, alternative plans, recommended plan, and recommended plan implementation measures, will be available upon completion of the study.

STREAM WATER QUALITY MONITORING PROGRAM CONTINUES

The Commission has entered into a cooperative agreement with the Wisconsin Department of Natural Resources, Division of Conservation, whereby the Division will undertake a continuing stream water quality monitoring program within the Region for the Commission. Water quality information is needed on a continuing basis in order to permit assessment of the long-term trends in stream water quality within the rapidly urbanizing Region. This monitoring program will build upon the stream water quality data base established by the SEWRPC in the regional land use-transportation study and published in SEWRPC Technical Report No. 4, Water Quality and Flow of Streams in Southeastern Wisconsin. The stream water quality monitoring program will involve the continued operation of the 87 stream sampling stations established by the SEWRPC on 43 streams and watercourses within the 12 major watersheds of the Region. Sampling will be completed twice yearly during the months of April and October. The establishment of this monitoring program was recommended by the Technical Advisory Committee on Natural Resources and Environmental Design.

TECHNICAL RECORD PUBLISHED

Volume 3, No. 1 of the SEWRPC Technical Record is now available. This publication, which is designed to document technical procedures applied by the Commission in its work, is published on an irregular basis, two or three times a year. Because of the irregularity of publication, subscriptions to the Technical Record are not available. Standing orders, however, may be placed; and the issues will be mailed out as they become available. The cost per issue is 50 cents inside the Region and \$1.00 outside the Region. The current issue contains articles on transit system development standards, modified rapid transit service in the Southeastern Wisconsin Region, and Part II of an article on historical highway development in southeastern Wisconsin.

"WHAT CAN WE DO ABOUT THIS?" is the title of a striking and forceful brochure on the problem of water pollution recently prepared by the Public Works Industry Promotion Program, Inc. The brochure, structured around a montage of newspaper articles that focus on the various facets of the water pollution problem, makes the important point that centralized sanitary sewerage systems which bring sewage to modern treatment facilities are one of the most important guarantees of pollution-free water and that other types of sewerage development must ultimately be replaced by such sewerage systems.

Copies of this brochure can be obtained by contacting Mr. John Drake, 3218 W. Fond du Lac Avenue, Milwaukee, Wisconsin 53210.

QUESTION BOX

HOW DO THE COMPREHENSIVE WATERSHED PLANNING STUDIES RELATE TO THE OVERALL REGIONAL PLANNING PROGRAM?

The Commission's regional planning program, as authorized by Section 66.945 of the Wisconsin Statutes, is oriented toward the preparation of a comprehensive plan for the physical development of the Region. Working toward this overall objective, the Commission first undertook a regional land use-transportation study that had as its specific objective the preparation of two of the key elements of such a comprehensive physical development plan: a land use plan and a transportation plan.

Soon after the regional land use-transportation study was initiated, it became readily apparent that there was also a pressing need within the Region for the preparation of plan elements directed toward the solution of water-related problems and that such plan elements should be prepared on a watershed basis and should provide, within the areal limits of each watershed, another of the key elements of a comprehensive plan for the physical development of the Region: a long-range plan for the development of water-related community facilities. As such, the plans would provide integrated proposals for pollution abatement, drainage and flood control, land and water use, and park and public open-space reservation.

While recognizing the importance of the watershed as a rational sub-regional planning unit, the Commission's overall planning program also recognizes the necessity to correlate the individual watershed planning programs within the broader framework of areawide regional planning. Important elements of such necessary areawide planning have been provided by the regional land use-transportation study and by other ongoing planning programs of the Commission. Completion of watershed planning studies covering all of the watersheds within the Region will provide the Commission with a framework of community facility plans encompassing drainage, flood control, and pollution abatement and will make significant contributions to the preparation of a framework of regional community facility plans for parks and recreation and for water supply and sewerage.

QUOTABLE QUOTE.....

"We think it is a settled principle, growing out of the nature of well ordered civil society, that every holder of property, however absolute and unqualified may be his title, holds it under the implied liability that his use of it may be so regulated that it shall not be injurious to the equal enjoyment of others having an equal right to the enjoyment of their property, nor injurious to the rights of the community....

There are two reasons of great weight for applying this strict construction of the constitutional provision to property in land: 1st, such property is not the result of productive labor, but is derived solely from the State itself, the original owner; 2nd, the amount of land being incapable of increase, if the owners of large tracts can waste them at will without State restriction, the State and its people may be helplessly impoverished and one great purpose of government defeated.

Chief Justice Shaw
Supreme Court of Massachusetts

Commonwealth v. Alger, 7 Cush. 53 Mass. (1851)

SOUTHEASTERN WISCONSIN REGIONAL
PLANNING COMMISSION

Old Courthouse
P. O. Box 769
Waukesha, Wisconsin
53186

Phone: 542-8083

Kurt W. Bauer
Executive Director

RETURN REQUESTED

BULK RATE
U. S. POSTAGE
PAID 3 3/5 ¢
WAUKESHA, WIS.
PERMIT NO. 645