

# REGIONAL PLANNING NEWS



A publication of the **Southeastern Wisconsin Regional Planning Commission**

Volume 4, Issue 2, June 2017

## LOOK ONLINE

Find new and updated information at  
[www.sewrpc.org](http://www.sewrpc.org) and  
[www.vision2050sewis.org](http://www.vision2050sewis.org).

## REPORTS AND RESOURCES

***A Lake Protection Plan for Hooker Lake, Kenosha County, Wisconsin***

***Conversion of Horizontal Survey Control Network in Kenosha County From Legacy Datum to New Federal Datum***

## SWITCH TO E-NEWS

Help save paper, printing, and mailing costs. Sign up to receive this newsletter by email at  
[www.sewrpc.org/news](http://www.sewrpc.org/news).

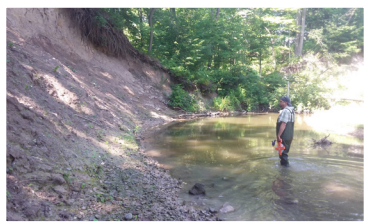
## Zoning Guide Update Underway

The Commission has initiated work on an update to the SEWRPC Zoning Guide, with a focus on updating sections of the model zoning ordinance affected by recent changes to State law or Court decisions. Updated sections will be posted on the Commission website as they are completed:

[www.sewrpc.org/ModelOrdinancesGuides](http://www.sewrpc.org/ModelOrdinancesGuides)

Updated sign regulations to comply with the 2015 Reed v. Town of Gilbert decision of the U.S. Supreme Court, which requires sign regulations to be “content neutral,” were recently completed. Additional model ordinance sections completed include regulations for Exclusive Agricultural zoning districts not claiming farmland preservation tax credits that are consistent with limitations placed on local regulation of livestock facilities by State law; wind energy system regulations; regulations for nonconforming uses and structures; Lake Michigan bluff setback regulations; and shoreland regulations for areas adjacent to navigable waters in cities and villages. Links are also provided to the Wisconsin Department of Natural Resources (WDNR) model ordinances for floodplain, county shoreland, and city and village shoreland-wetland zoning regulations; to a model ordinance for mobile (cell) tower facilities prepared by the Wisconsin Towns Association; and to model Farmland Preservation zoning ordinances consistent with State requirements for farmland tax credits prepared by the Department of Agriculture, Trade, and Consumer Protection.

Please contact Rick Kania at (262) 547-6721 or [rkania@sewrpc.org](mailto:rkania@sewrpc.org) for more information about model zoning regulations and assistance with preparing or updating local ordinances.



**2** Oak Creek Watershed Plan



**4** Lake-Related Planning Update



**7** New VISION 2050 Website

# Oak Creek Watershed Restoration Plan Monitoring Activities

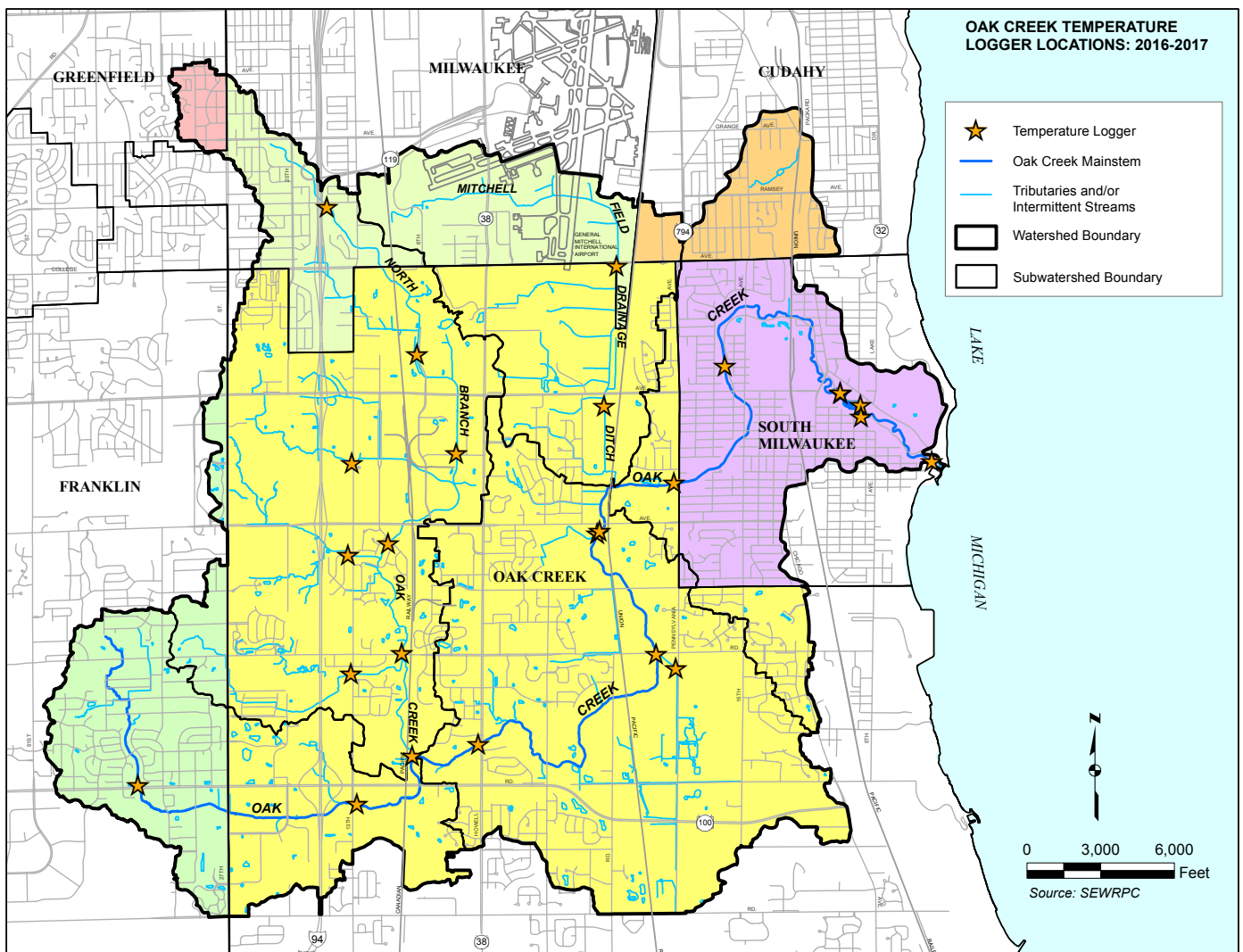
The Commission staff is preparing a restoration plan for the 28-square mile Oak Creek watershed, which is located entirely within Milwaukee County and includes portions of the Cities of Cudahy, Franklin, Greenfield, Milwaukee, Oak Creek, and South Milwaukee. The watershed restoration plan will provide a guide for addressing the water quality impairments that have been identified in the watershed, and it will include specific, targeted recommendations to address a set of focus issues related to conditions within the watershed. In addition to water quality, focus issues for the plan include recreational use and access, habitat conditions, and targeted stormwater drainage and flooding issues.

In 2016, SEWRPC staff began field monitoring of the Oak Creek watershed for the planning effort. Field work included the May 2016 placement of 25 continuous temperature loggers throughout the watershed (Figure 1). Stream temperature will be logged

every hour through the fall 2017. Water temperature drives numerous physical, chemical, and biological processes in aquatic systems. Temperature is a major determinant of the suitability of a waterbody for certain species of fish and it may indicate vital groundwater discharge areas that should be protected and potential temperature refuges for fish and biota in the warmer summer months. The water temperature data collected in the Oak Creek watershed will help SEWRPC staff to characterize different reaches of each stream.

SEWRPC staff also initiated the in-stream channel survey and inventory to collect information that will serve as the basis for the characterization of the current physical and habitat conditions of the streams within the Oak Creek watershed. As of October 2016, SEWRPC staff have collected field data along six miles of the mainstem of Oak Creek from its mouth at Lake Michigan to

*Figure 1*  
**TEMPERATURE LOGGERS**



Source: SEWRPC



## ENVIRONMENT

approximately Forest Hill Avenue. Information gathered during the 2016 stream survey include locations of large woody debris (Figure 2); assessment of streambank erosion (Figure 3); locations of stormwater and drain tile outfalls; locations of large trash and debris within the stream channel; important environmental features such as springs, groundwater seepages, mussels, and fish beds; and parameters from 43 cross section surveys to quantitatively and qualitatively assess instream habitat. The cross section surveys are largely based upon the WDNR Baseline Monitoring protocols for instream fisheries habitat assessment and include measurements of water and sediment depth, substrate composition, bank slope, channel width, and bankfull width and depth. The presence of large woody debris can provide essential food and habitat for aquatic organisms, but it can also inhibit movement along the stream corridor as seen in Figure 2.

Finally, SEWRPC staff completed an inventory and survey of all stream crossings along the main reaches of Oak Creek, the North Branch of Oak Creek, and the Mitchell Field Drainage Ditch. In total, 48 culverts and 34 bridges were assessed for general physical condition and to determine if they are potential barriers to the passage of fish (Figure 2).

Field monitoring activities will continue in 2017, with work to proceed on the remainder of the mainstem of Oak Creek and then transition to the North Branch Oak Creek and Mitchell Field Drainage Ditch.

*Figure 2*

### LARGE WOODY DEBRIS AND FISH PASSAGE



Source: SEWRPC

*Figure 3*

### STREAMBANK EROSION



Source: SEWRPC



## Lake-Related Planning Update

SEWRPC staff just completed a second edition aquatic plant management plan for the Whitewater and Rice Lakes. The plan report can be accessed through the following link:

[www.sewrpc.org/mr-177](http://www.sewrpc.org/mr-177)

This plan represents an update to the last plan that SEWRPC completed in 2010. This project was funded in part by the Whitewater-Rice Lakes Management District and, in part, through a Chapter NR Lake Management Planning grant administered by the Wisconsin Department of Natural Resources (WDNR).

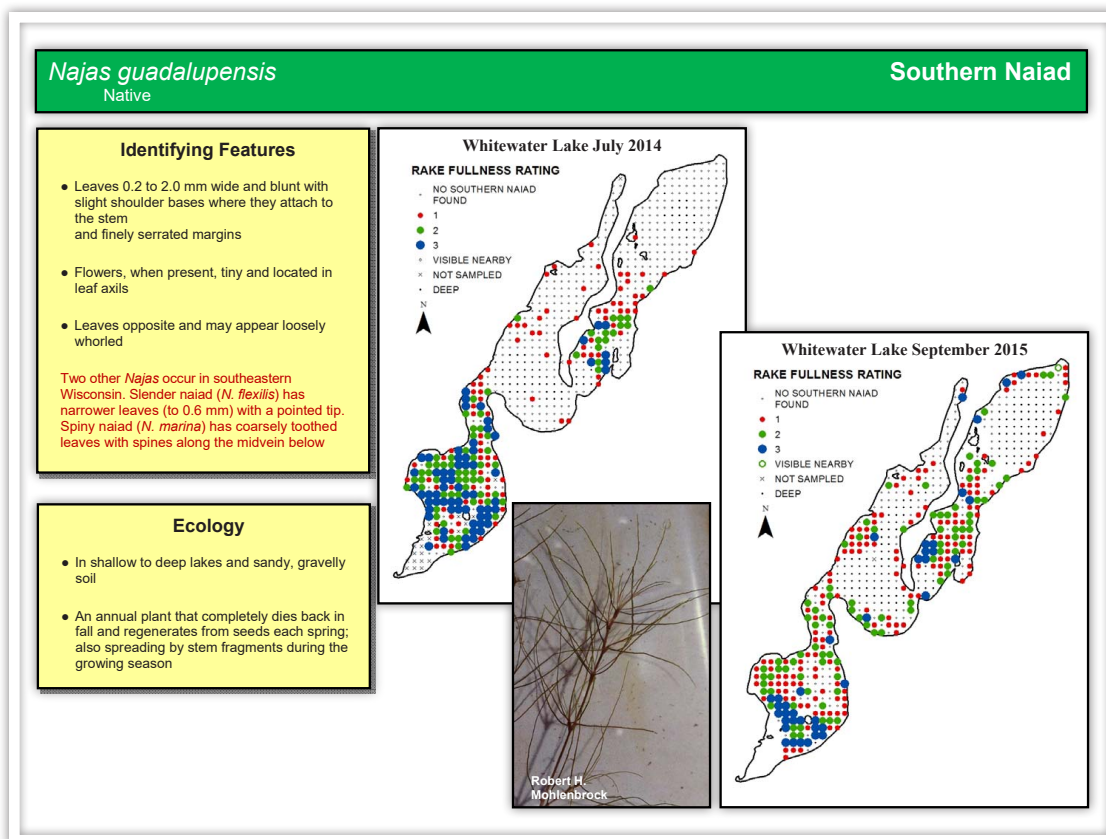
Although the main focus of the plan was on the aquatic plant community assessment (including an aquatic plant survey, see aquatic plant species Southern Naiad Distribution Map for Whitewater Lake below) and management recommendations, this planning effort also incorporated a variety of additional issues and concerns that included: water quality; Bluegreen (Cyanobacteria) and floating algae; bog removal; groundwater recharge, baseflow recharge rate maintenance, and surface water runoff; recreation; fish and wildlife, most notably carp control problems; and plan implementation strategies. This plan provides a framework for citizens, businesses, local units of government, and State agencies to protect and improve the land and water resources of these lakes so that they continue to provide a wealth of safe and enjoyable recreational opportunities.



Common Carp  
Source: SEWRPC



Source: SEWRPC



This is one of several lake management plans that SEWRPC is completing in cooperation with local units of government/lake groups and the WDNR within the Southeastern Wisconsin Region.

Source: SEWRPC

### Brownfield Assistance

Southeastern Wisconsin, like many urbanized regions throughout the nation, has experienced an increase in vacant or underutilized sites once devoted to industrial and commercial uses. These sites, referred to as brownfields, are often concentrated in older-central-city areas, but could be found in any community in the Region. Redevelopment of brownfields can be challenging because of known or suspected environmental contamination and potential clean-up costs.

SEWRPC continues to serve as a partner with the Bay Lake, Capital Area, East Central Wisconsin, North Central Wisconsin, Northwest Wisconsin, Southwestern Wisconsin, and West Central Wisconsin Regional Planning Commissions and the Wisconsin Department of Natural Resources (WDNR) in the Wisconsin Brownfields Coalition. The Coalition has obtained, and continues to seek, U.S. Environmental Protection Agency grant funds for brownfields assessments that the WDNR Brownfields Program awards.

The WDNR Brownfields Program can help communities, non-profit organizations, and private parties clean-up and redevelop brownfields. The first step is contacting the WDNR to set up a Green Team meeting, which may include WDNR staff as well as

local partners familiar with the site. The Green Team will discuss issues such as liability protections, regulatory processes, and potential financial assistance to evaluate redevelopment options.

The Wisconsin Assessment Monies Program (WAM) is one potential source of brownfield redevelopment assistance. Administered by the WDNR's Remediation and Redevelopment Program, WAM can provide professional environmental assessments of contaminated properties to start the process of readying a site for redevelopment. Over 20 WAM awards have gone to Southeastern Wisconsin communities since 2010. More information about WAM, including eligibility requirements, can be found on the WAM website at:

**[dnr.wi.gov/topic/Brownfields/wam.html](http://dnr.wi.gov/topic/Brownfields/wam.html)**

Another Brownfields Program resource is clean-up funding available through Ready for Reuse. Ready for Reuse awards are made as either grants or 0% interest loans that are available to communities or non-profits with projects that have had a complete site investigation and are ready for clean-up. Contact the Ready for Reuse Administrator for a full explanation of the requirements to find out if your project qualifies for a grant or loan.

#### **Green Team:**

##### **Southeast Region:**

Margaret Brunette 414-263-8557

##### **Statewide:**

Elisabeth Kuisis 608-267-0543

WAM: Tom Coogan 608-267-7560

Ready for Reuse: Gena Larson 608-261-5404



*Brownfield redevelopment in Kenosha*

*Source: SEWRPC*



### Aerotropolis Milwaukee Development Plan Completed

In February 2017, the Commission staff completed a development plan for Aerotropolis Milwaukee, a public-private partnership of business leaders and local representatives from Milwaukee County and nine communities in the County focused on promoting economic growth around General Mitchell International Airport. The plan, prepared with The Gateway to Milwaukee and Milwaukee Gateway Aerotropolis Corporation, establishes a shared vision and coordinated effort to capitalize on the Airport to stimulate economic investment, promote job growth, and enhance the quality of life in the nine Aerotropolis Milwaukee communities. It is designed to be used as a reference tool for local governments and agencies to aid in decision making relative to future land use changes and strategic investments.

The Commission and Gateway staff are currently working with each community to obtain their endorsement of the plan. Five of the nine communities participating in the planning process have endorsed the plan as of May 2017.

The plan is available at:

[www.sewrpc.org/AeroPlanReportFinal.pdf](http://www.sewrpc.org/AeroPlanReportFinal.pdf)

More information on Aerotropolis Milwaukee is available at:

[www.aerotropolismkc.com](http://www.aerotropolismkc.com)



Source: General Mitchell International Airport

#### AEROTROPOLIS MILWAUKEE COMMUNITIES

Cudahy  
Franklin  
Greendale  
Greenfield  
Hales Corners  
Milwaukee  
Oak Creek  
South Milwaukee  
St. Francis

## COMMUNITY ASSISTANCE

### Economic Profiles Underway

The Commission is working with the Waukesha County Center for Growth to prepare economic profiles for eleven participating communities in Waukesha County. The profiles will highlight community assets that help to attract, retain, and grow businesses within each community and throughout the County. Each profile will include a history of the community as well as information on demographics, housing, educational opportunities, healthcare facilities, transportation, business/industrial parks, labor force, major employment sectors, and contact information for local governments and utilities.

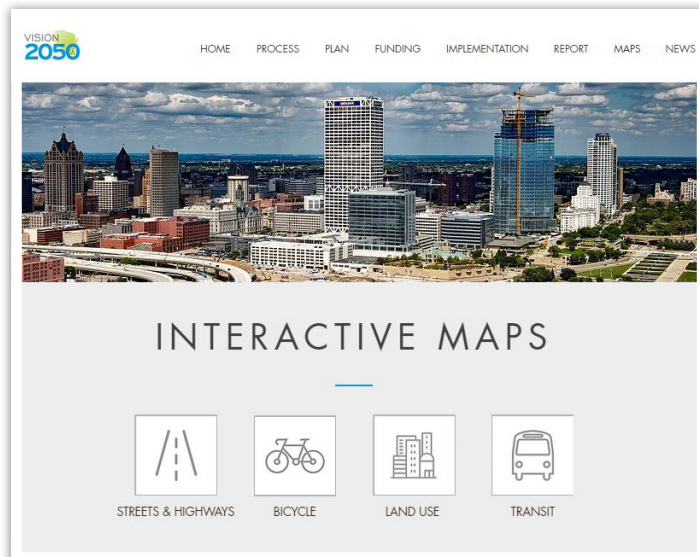
The Waukesha County Center for Growth was created in 2016 in partnership with the City of Waukesha, Waukesha County Business Alliance, Wisconsin Small Business Development Center, and local governments. The mission of the Center for Growth is to serve as the central point of contact for businesses looking to grow in Waukesha County.

Please contact Ben McKay at (262) 547-6721 or [bmckay@sewrpc.org](mailto:bmckay@sewrpc.org) for more information about the economic profiles.

### New VISION 2050 Website with Online Mapping

Residents can now explore VISION 2050, the Region's adopted land use and transportation plan, using a revamped website created to share the key recommendations of the plan. The new website also includes interactive mapping of several main elements, including land use, public transit, streets and highways, and the bicycle network. The new website accompanies the *VISION 2050 Summary* report being distributed throughout the

Region, and the full three-volume plan report, which is expected to be completed this month. The summary and draft chapters of the report can be accessed on the VISION 2050 website or on the SEWRPC website. Once the full three-volume report is published, it will be sent to each affected unit and agency of government requesting their consideration and endorsement.





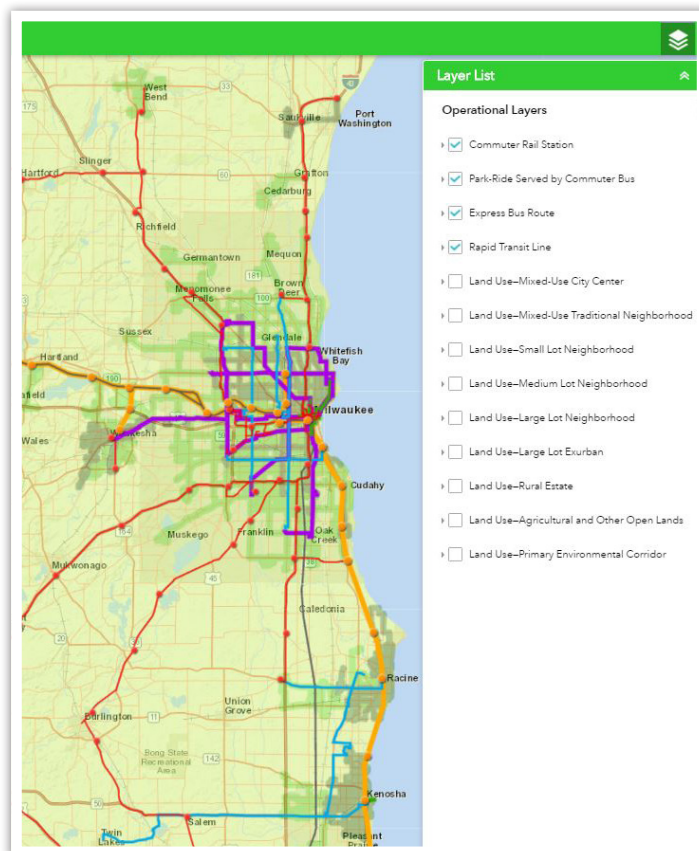
**VISION 2050**

*One Region, Focusing on Our Future*

VISION 2050 recommends a long-range vision for land use and transportation in the seven-county Southeastern Wisconsin Region. It makes recommendations to local and State government to shape and guide land use development and transportation improvement, including public transit, arterial streets and highways, and bicycle and pedestrian facilities, to the year 2050.

More information on VISION 2050, including the new interactive maps, can be found on the VISION 2050 website at:

**[www.vision2050sewis.org](http://www.vision2050sewis.org)**



**Ozaukee County Transit  
Development Plan  
Workshop Schedule:**

**Wednesday, June 21, 2017**

7:00 – 8:30 pm  
Port Washington State Bank  
Lakeview Community Room  
206 N. Franklin Street  
Port Washington, WI 53074

**Thursday, June 22, 2017**

6:00 – 7:30 pm  
Ozaukee County Fairgrounds  
Columbia St. Mary's Center  
W67 N890 Washington Avenue  
Cedarburg, WI 53012

More information, including a public  
comment form, is available at  
[sewrpc.org/OzaukeeTransit](http://sewrpc.org/OzaukeeTransit).

The **Southeastern Wisconsin  
Regional Planning Commission**  
is the official advisory areawide planning  
agency for land use and infrastructure  
for the seven counties in the Region.

More information can be found at  
[www.sewrpc.org](http://www.sewrpc.org).

Please contact us at  
[sewrpcnews@sewrpc.org](mailto:sewrpcnews@sewrpc.org).

## Ozaukee County Transit Development Plan Public Meetings

At the request of Ozaukee County, the Commission staff is preparing a 5-year transit plan for the County. This plan will evaluate the existing County transit services, analyze changes that could be made to the services, and make recommendations to the County to change and improve services. To date, the Advisory Committee has reviewed existing services and evaluated the performance of the Ozaukee County Express and Shared-Ride Taxi.

Two public meetings have been scheduled to gather input from Ozaukee County residents and those interested in transit services in the County. Free transit access is available via the Ozaukee Shared-Ride Taxi by calling (262) 238-8294 (TAXI) with 24 hours advance notice.

Participants will be asked for feedback on existing transit services and changes that could be made to improve transit service in the future. This information will inform the Advisory Committee as they develop the list of alternatives to study in the next phase. A short presentation will be given 15 minutes after the start of each meeting.

### What's Next?

Public input from the public meetings will help shape the next steps of the process. These steps include:

- Development and evaluation of transit service alternatives for the Ozaukee County Express and Shared-Ride Taxi that address the performance evaluation and unmet transit service needs identified by the Advisory Committee
- Preparation of a five-year recommended transit service improvement plan for Ozaukee County
- Consideration of the recommended transit service improvement plan by the Ozaukee County Board of Supervisors

SOUTHEASTERN WISCONSIN  
REGIONAL PLANNING COMMISSION  
W239 N1812 ROCKWOOD DRIVE  
PO BOX 1607  
WAUKESHA, WISCONSIN 53187-1607

