

Adelene Greene Feted

The **Urban League of Racine and Kenosha** presented an **economic development award** to Adelene Greene, Workforce Development Director for Kenosha County, at its 50th anniversary celebration recently.

Greene is a SEWRPC Commissioner and Chair of the SEWRPC Environmental Justice Task Force.

The **Southeastern Wisconsin Regional Planning Commission** is the official

advisory areawide planning agency for land use and infrastructure

for the seven counties in the Region.

More information can be found at www.sewrpc.org. Please contact us at sewrpcnews@sewrpc.org.



Economic Development Strategy Ready for Comments

Continued from page 1

capability of businesses; align workforce development with growth opportunities in the key clusters; enhance innovation and entrepreneurship; focus on economic place-making in the central cities and strategic locations throughout the Region; modernize regional infrastructure; and enhance inter-jurisdictional cooperation.

Each County Board in the Region is expected to consider the CEDS for approval later this year. Approval would make that county and its local governments eligible to apply for U.S. Department of Commerce Economic Development Administration (EDA) funding to assist economically distressed areas. Approval by all the counties could potentially lead to EDA designation of the Region as an Economic Development District, making it eligible to apply for funding for ongoing development activities.

The CEDS was prepared by SEWRPC and the Milwaukee 7 (M7) in cooperation with the Regional Economic Partnership (REP). The REP includes a representative from each of the county economic development organizations or staffs, the City of Milwaukee, M7, We Energies, and SEWRPC. Staff from the Wisconsin Economic Development Corporation assisted.

More information is available at www.sewrpc.org/CEDSreport.

Regional Planning News

Land Use

Transportation

Environment

Parks & Open Spaces

Housing



A publication of the **Southeastern Wisconsin Regional Planning Commission**

Volume 2, Issue 2, March 2015

ARTICLES

Economic Development Strategy, page 1

MMSD floodplain and data project, page 1

What is SEWRPC? page 2

VISION 2050, page 2

Hazard mitigation planning, page 3

Environmental corridor delineation training, page 3

Adelene Greene feted, page 4

Update Your Contact Information

Please send complete contact information and changes to sewrpcnews@sewrpc.org.

LOOK ONLINE

Find new and updated information at www.sewrpc.org and www.vision2050sewis.org.

Reports and resources

[A Lake Protection Plan for Bark Lake, Washington County](#)

[A Lake Protection Plan for School Section Lake, Waukesha County](#)

[Comprehensive Economic Development Strategy](#)

[Racine County Hazard Mitigation Plan Update 2010-2015](#)

Economic Development Strategy Ready for Comments

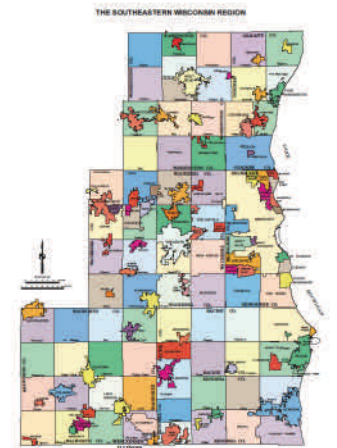
A draft **Comprehensive Economic Development Strategy (CEDS)** has been completed for the Southeastern Wisconsin Region and is available for **public comment through May 1, 2015**.

The CEDS is a strategic plan designed to strengthen the economy in Kenosha, Milwaukee, Ozaukee, Racine, Walworth, Washington, and Waukesha Counties.

The strategy identifies the **six business clusters** comprising 1) energy, power, and controls; 2) water technologies; 3) food and beverage manufacturing; 4) finance and insurance services; 5) corporate headquarters and business services; and 6) medical technology and bioscience, as having the best potential for economic growth, expansion, and attraction in the Region.

The CEDS recommends that development efforts enhance the export

Continued on page 4



See map at www.sewrpc.org/CEDSreport

ENVIRONMENT

MMSD Floodplain and Data Project Commences

SEWRPC staff is assisting the Milwaukee Metropolitan Sewerage District (MMSD) in the preparation of its **2050 Facilities Plan**. SEWRPC's work began in fall 2014 and is expected to be completed in spring 2017. It will include floodplain analysis and mapping, a review of the MMSD Chapter 13 stormwater management rule, and the compilation of demographic and land use planning data to help predict future wastewater flows for sewer and treatment plant capacity needs.

The **floodplain analysis and mapping** will be completed for future land use conditions for selected streams within the MMSD service area.

Continued on page 3

First Class Mail
U.S. POSTAGE
PAID
PERMIT NO. 645

SOUTHEASTERN WISCONSIN
REGIONAL PLANNING COMMISSION
WZ39 1812 ROCKWOOD DRIVE
PO BOX 1607
WAUKESHA, WISCONSIN 53187-1607

What is SEWRPC?

The **Southeastern Wisconsin Regional Planning Commission (SEWRPC)** is the official advisory areawide planning agency for land use and infrastructure for Kenosha, Milwaukee, Ozaukee, Racine, Walworth, Washington, and Waukesha Counties; the **metropolitan planning organization (MPO)** for the Region; and is the largest of nine regional planning commissions in Wisconsin.



SEWRPC provides research, analysis, and planning to Federal, State, and local governments. It is governed by 21 Commissioners, three from each of the seven member counties in the Region. One Commissioner from each county is appointed by the county board (or confirmed by the county board in those counties where a county executive appoints) and is usually an elected county board supervisor. The remaining two from each county are appointed by the Governor, one from a list prepared by the county.

The Commission and staff are assisted by advisory committees composed of elected and appointed public officials and interested citizens with knowledge in SEWRPC work areas. The committees guide and shape the recommendations of the Commission.

Staff working in SEWRPC's Transportation, Environmental Planning, Land Use, and Community Assistance / Economic Development Planning Divisions have direct responsibility for SEWRPC's major planning programs. Other divisions, including Geographic Systems, Surveyor Services, and Public Involvement and Outreach, provide support to the planning divisions.

SEWRPC was established in 1960 under Section 66.0309 of the Wisconsin Statutes. Basic financial support for SEWRPC's work program is provided by a regional tax levy apportioned to each of the seven counties on the basis of equalized valuation. The tax levy is supplemented by Federal and State aids.

Switch to Digital News

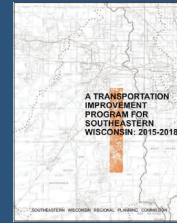
Help save paper, printing, and mailing costs. Please sign up to receive *Regional Planning News* electronically at www.sewrpc.org.

More information is available at www.sewrpc.org/aboutus.

SEWRPC's published reports are intended to serve as references for public officials

at the Federal, State, and local levels as they consider important development decisions. Publications include plans and reports about these and other subjects:

- Land use
- Transportation
- Streets and highways
- Public transit
- Water supply
- Water quality management
- Flood mitigation
- Lake management
- Watershed protection and restoration
- Environmental corridors and natural areas
- Parks and open spaces
- Population and the economy
- Housing
- Economic development



WATCH FOR VISION 2050 UPDATES AND MEETING ANNOUNCEMENTS ONLINE

VISION 2050 is SEWRPC's land use and transportation

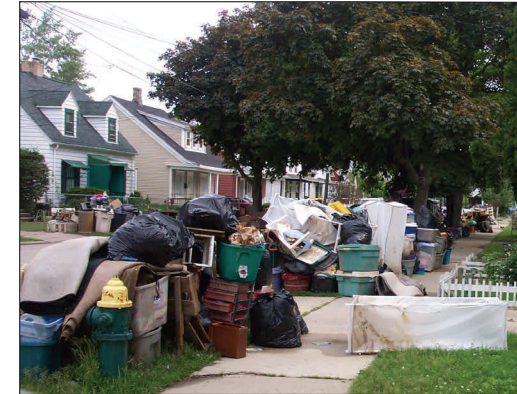


planning effort for Southeastern Wisconsin for the year 2050.

Learn about VISION 2050 topics and materials, sign up for the electronic newsletter, and watch for upcoming public workshops and opportunities to comment at www.vision2050sewis.org. Follow VISION 2050 on Twitter at [@vision2050sewis](https://twitter.com/vision2050sewis).

ENVIRONMENT

Racine, Washington Counties Focus on Hazard Mitigation



After Racine County flooding in 2008. Source: Racine County Office of Emergency Management.

SEWRPC has begun work on a new hazard mitigation plan for Washington County and an update to the 2010-2015 plan for Racine County. **Each plan will take one to two years to complete.** Local public meetings will be scheduled to review plan information. Plan chapter drafts, meeting materials, and public comment forms will be provided in print and online.

Hazard mitigation plans outline local strategies for mitigating hazards such as flooding, drought, lakeshore erosion, transportation accidents, severe weather, and hazardous material situations. They are required by the State Division of Emergency Management, State Department of Military Affairs, and Federal Emergency Management Agency (FEMA), for local governments to receive State and Federal funding for mitigation projects.

The plans focus on **decision-making that can reduce long-term risks to human life and property.** They identify lasting measures to reduce the exposure to or potential loss from hazardous events. Considered are: where and how to build structures, education to reduce losses or injury, and programs to improve the safety of identified hazard areas.

Hazard mitigation plans are not the same as, but are compatible with, emergency response or operations plans that describe how people and property will be protected in disaster situations, who is responsible, resources available, and how actions will be coordinated.

For information about hazard mitigation plans, contact SEWRPC Senior Planner **Joe Boxhorn** at jboxhorn@sewrpc.org or (262) 953-3244, and visit www.sewrpc.org/Hazard-Mitigation.

MMSD Floodplain and Data Project

Continued from page 1

The maps will inform MMSD about flood hazards under planned land use conditions and help guide MMSD watercourse system planning in the future.



A review of the MMSD Chapter 13 Rule — which addresses storm-water control for new development — will also be done using planned land use conditions and rainfall-depth data recently completed by the National Oceanic and Atmospheric Administration (NOAA) with funding from the Wisconsin Departments of Natural Resources and Transportation and from SEWRPC.

Data predicting the future population, households, and total area of commercial and industrial land will be compiled for each municipality served by MMSD. It will be used to provide information about **waste-water flows within the MMSD system** for the years 2035 and 2050.

More information is available by contacting **Mike Hahn** at mhahn@sewrpc.org.

Environmental Corridor Delineation Training April 14 in West Bend

SEWRPC is planning an Environmental Corridor Delineation Training for April 14 from **8 am to noon at UW-Extension offices** in West



Bend. Training will cover the **history of environmental corridors, criteria and mapping elements, and the delineation process**, and will include three hours of presentations followed by an optional onsite field activity. For information, contact **Jennifer Dietl** at (262) 953-4291 or jdietl@sewrpc.org.