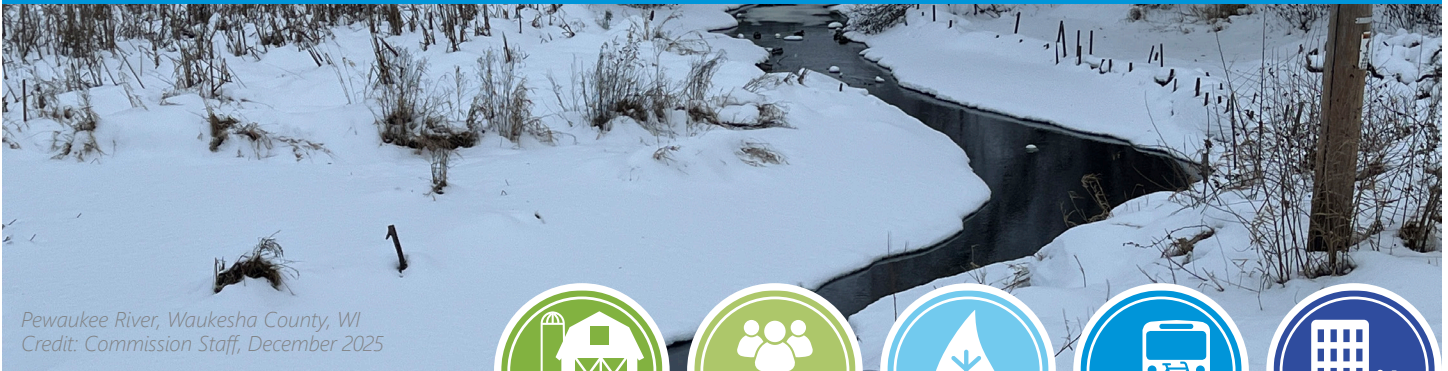


REGIONAL PLANNING NEWS

A publication of the **Southeastern Wisconsin Regional Planning Commission**



Pewaukee River, Waukesha County, WI
Credit: Commission Staff, December 2025

Volume 12 • Issue 4 • December 2025



FIND US WITH E-NEWS!

Sign up to receive this
newsletter by email at
sewrpc.org/news.

Try Carpooling During I-94 East-West Construction with CommuteWISE

With construction underway on the I-94 East-West Freeway Project in Milwaukee County, now is a great time to share your ride, reduce congestion, and save on your commute costs. Our free CommuteWISE tool can help you start finding carpool matches or alternative transportation options.

Learn more and join at www.connect.commutewise.org.



Southeastern
Wisconsin
Regional
Planning
Commission

Interested in setting up a carpooling network at your company? Through CommuteWISE we can create a private network for employees interested in driving together. Reach out to the team at commutewise@sewrpc.org and we'd be happy to support your organization.

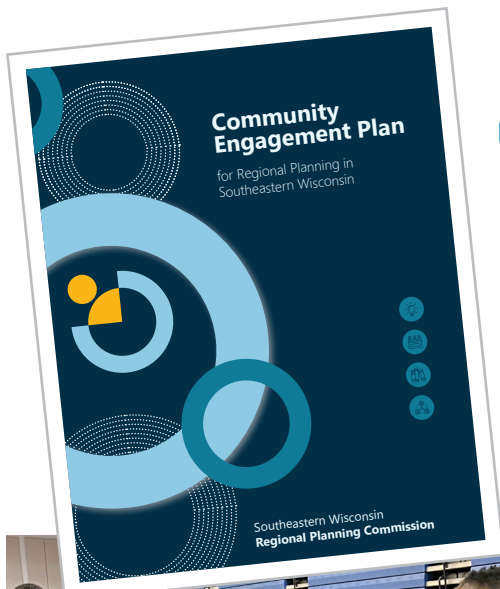
commutewise



About CommuteWISE

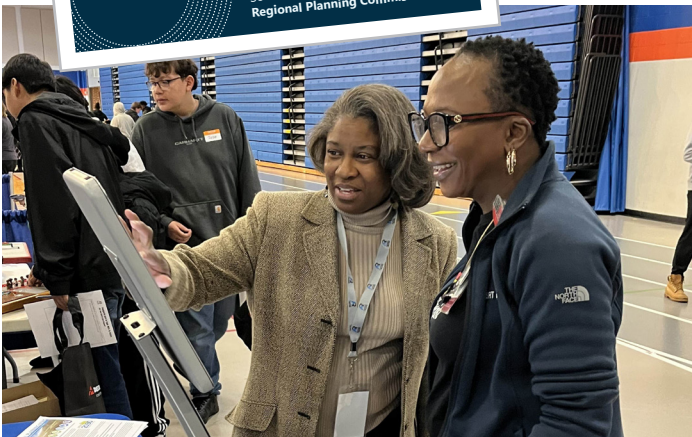
CommuteWISE is Southeastern Wisconsin's transportation demand management (TDM) program. The Commission provides tools, subsidies, and expertise to empower individuals and employers to expand travel choices beyond driving alone.

Learn more at
www.sewrpc.org/CommuteWISE.



Updated Community Engagement Plan Now Available

Our updated Community Engagement Plan guides how we inform and engage the public in our regional planning efforts. Community engagement is an important part of our planning process. The plan identifies our outreach approach and ways to get involved with planning studies underway. Prior to publication of the plan, our Community Engagement team met with community organizations, attended local events, and held one-on-one meetings to share a draft of the plan and receive feedback. Read the plan at www.sewrpc.org/Community-Engagement.



Community Engagement Goals

Our regional planning work relies on effective community engagement, and the Community Engagement Plan serves as a guide for meeting these three goals:

1

Ensure early and continuous public notification about regional planning efforts.

2

Provide meaningful information concerning regional planning efforts and include all residents in the regional planning process, particularly those who have traditionally had lower levels of participation.

3

Incorporate community input into regional planning efforts.

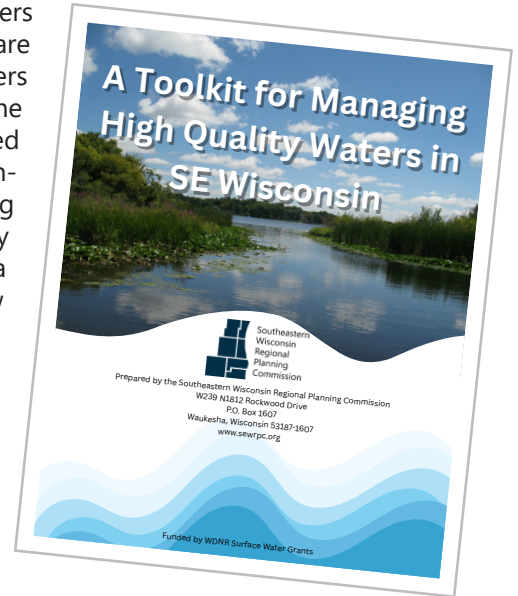


Commission Releases New Toolkit for Managing High-Quality Waters

Much of the time, attention, and funding directed towards Wisconsin surface waters is on restoring impaired and poor-quality lakes and rivers. While these efforts are necessary, there has been less focus on protecting high-quality lakes and rivers from becoming impaired. Through a series of Surface Water Grants from the Wisconsin Department of Natural Resources (WDNR), the Commission has helped establish a network of well-informed stakeholders from WDNR-designated “high-quality” lakes within Walworth and Waukesha Counties. From this networking effort, Commission staff has produced A Toolkit for Managing High-Quality Waters in Southeastern Wisconsin to inform and train stakeholders on lake data inventory, best management practices, and funding opportunities. You can view the toolkit at www.sewrpc.org/A-Toolkit-for-Managing-HQWs-in-SE-WI.pdf.

High-Quality Waters Program Background

The WDNR published its list of “high-quality” lakes, rivers, and wetlands in 2022 as part of its Healthy Watersheds, High-Quality Waters program. There are 32 lakes and 24 streams identified by WDNR as “high-quality” within Southeastern Wisconsin, as well as 105 “healthy and rare” wetlands. Throughout 2024, Commission staff conducted interviews with stakeholders and in May 2025 a workshop was held with these groups to collaborate and develop strategies to protect these waterbodies, with one of the outcomes being the new Toolkit for Managing High-Quality Waters.



High-Quality Lakes in Walworth and Waukesha Counties

Walworth County

Booth Lake
Geneva Lake
Lake Beulah
Lake Wandawega
Lulu Lake
Middle Lake
Pleasant Lake
Turtle Lake
Whitewater Lake

Waukesha County

Beaver Lake
Big Muskego Lake
Eagle Spring Lake
Fowler Lake
Golden Lake
Little Muskego Lake
Lower Nashotah Lake
Lower Phantom Lake
Nagawicka Lake
Oconomowoc Lake
Ottawa Lake
Pine Lake
Pretty Lake
Spring Lake
Upper Nemahbin Lake

4/2022



Season’s Greetings from the Commission!

Thank you to all of our partners for your support and collaboration in 2025. We look forward to 2026 and continuing to provide trusted expertise and guidance to help communities plan for a thriving region.