

Wisconsin Environmental Equity Tool

A map tool to understand and advance environmental and health equity

SEWRPC Environmental Justice Task Force

September 20, 2022



About WEET

Wisconsin
Environmental
Equity
Tool



GOVERNOR'S TASK FORCE ON

CLIMATE CHANGE REPORT



Rural Voices for Prosperity:

A Report of the
Governor's Blue Ribbon Commission on Rural Prosperity



Advancing Environmental Justice and Health Equity



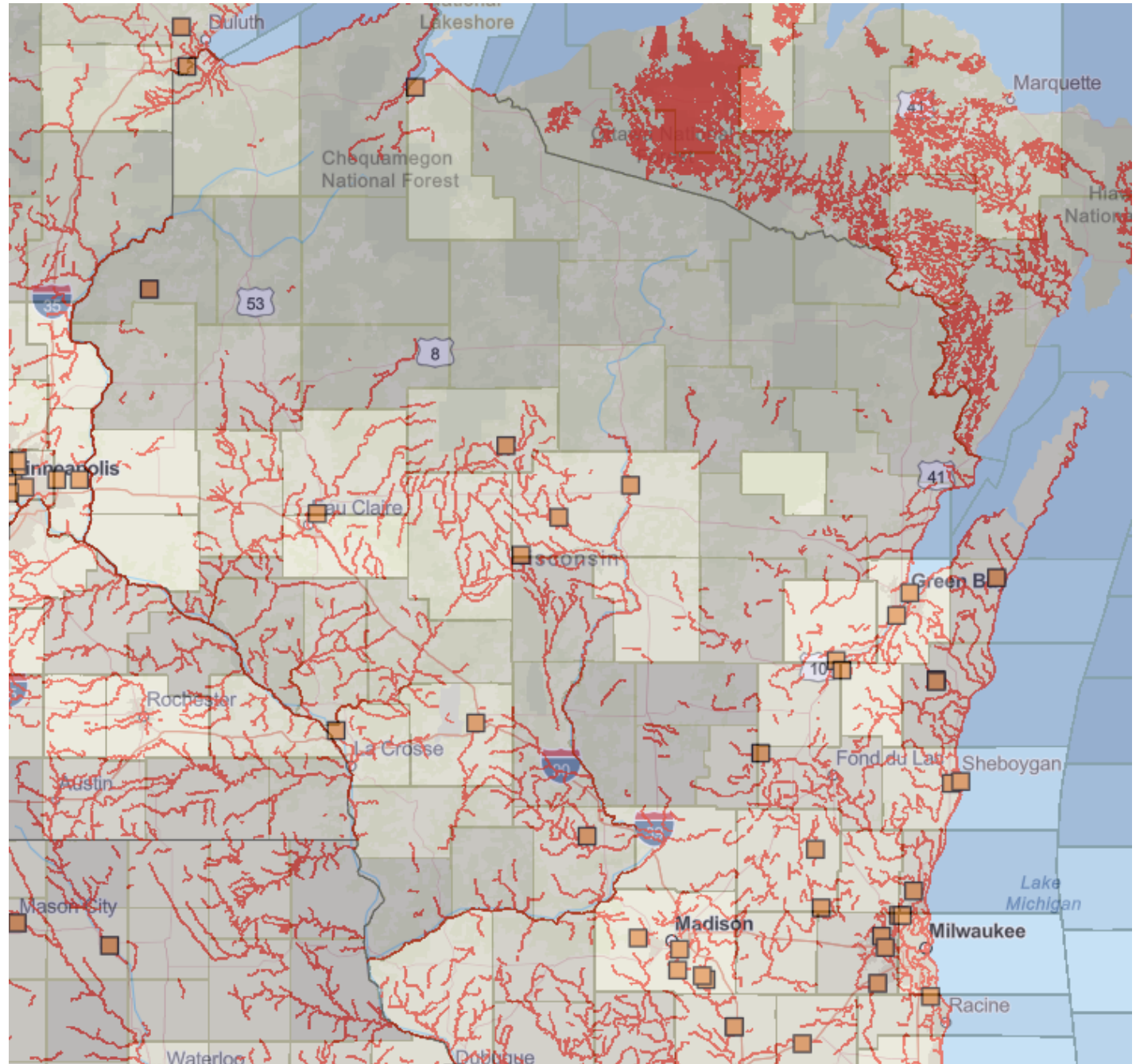
Models

EPA EJSCREEN

CalEnviroScreen

MD EJSCREEN

Washington
Environmental
Health Disparities
Map



Potential Users

Community Members

Local & Tribal Public Health

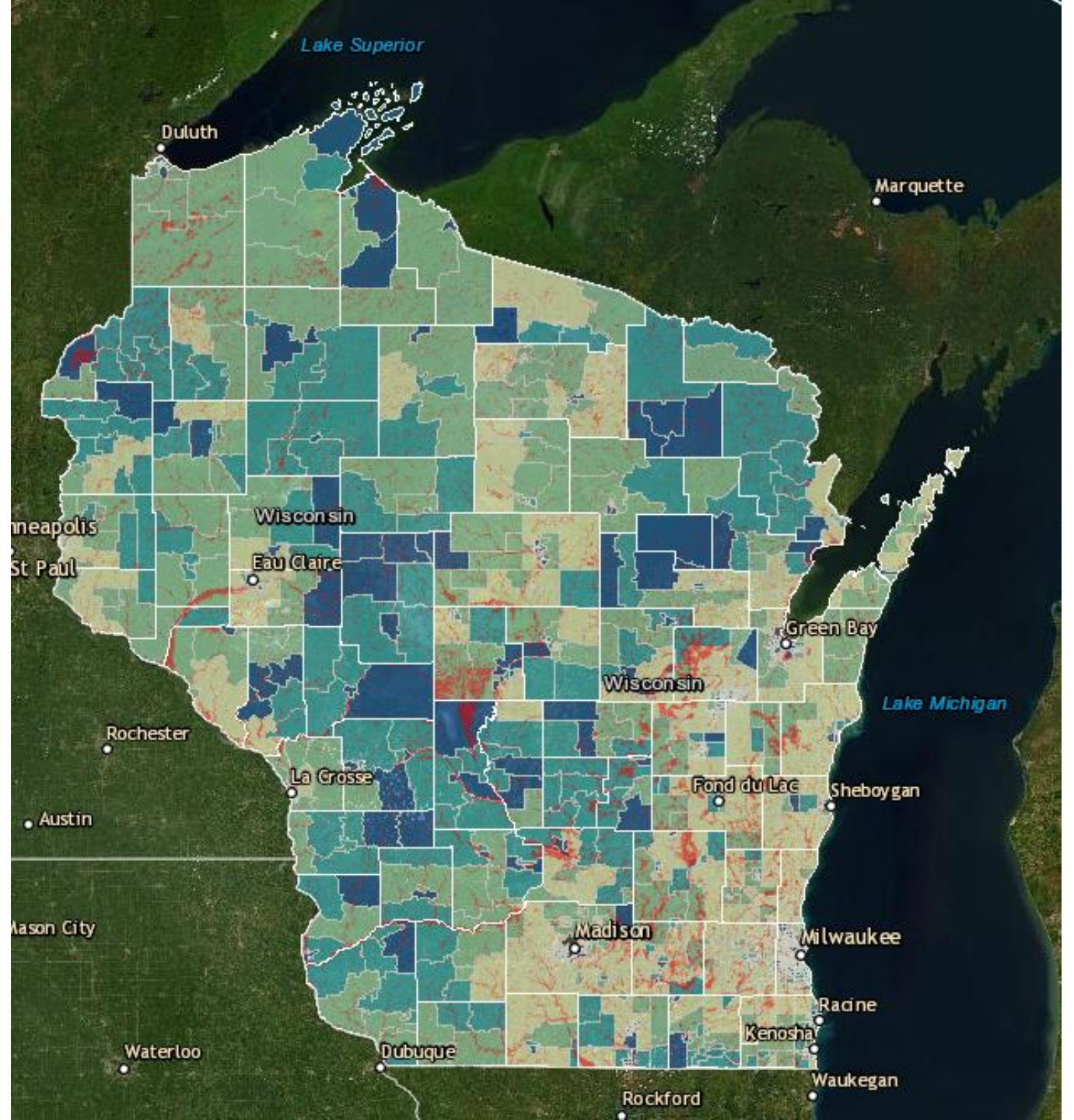
Economic Development

Community-Based Organizations

Planners

Natural Resources Managers

Government Staff and Elected Officials



Public Involvement Timeline

- ❖ Key Stakeholder Interviews (August 2021)
- ❖ Listening Sessions (November 2021)
- ❖ Online Surveys (November 2021)
- ❖ Local & Tribal Government Survey (March 2022)
- ❖ Community Conversations & Interviews (August 2022)
- ❖ Ad Hoc Advisory Committee (April 2022, ongoing)

Next Steps

- ❖ Ongoing Public Involvement
- ❖ Create Story Maps (October 2022)
- ❖ Tool Testing (October 2022)
- ❖ First Version of Tool Completed (November 2022)

Discussion Questions

1. What are the primary concerns and struggles of community members related to environment and health?
2. What would you like to see in the tool (data indicators, information, functionality)?

Questions?

WEET

- ❖ EnvEquity@wedc.org
- ❖ 608-210-6700
- ❖ wedc.org/community/environmental-equity/
- ❖ dhs.wisconsin.gov/climate/env-equity-tool.htm