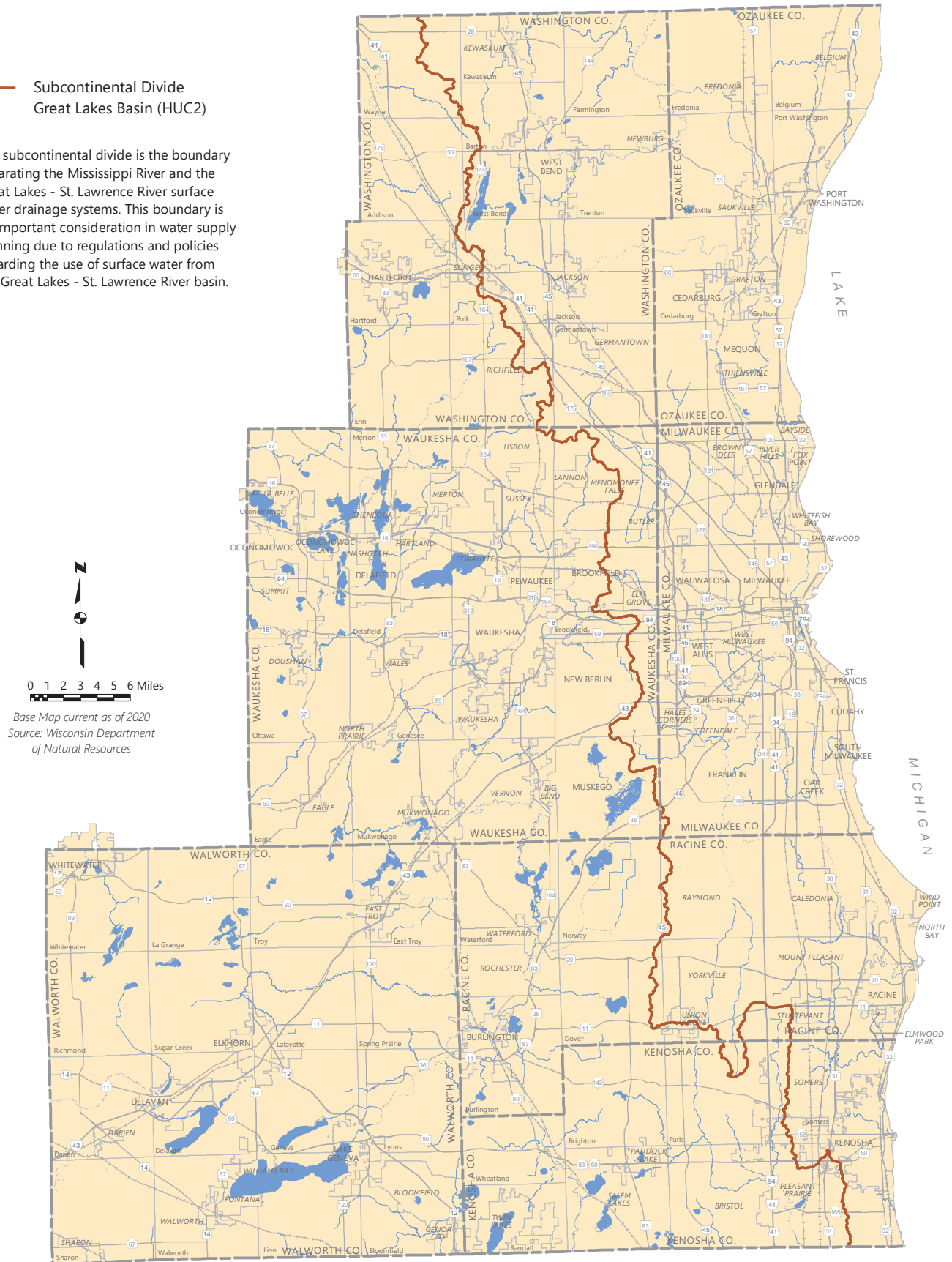


Subcontinental Divide in Southeastern Wisconsin - Great Lakes Compact

— Subcontinental Divide
Great Lakes Basin (HUC2)

The subcontinental divide is the boundary separating the Mississippi River and the Great Lakes - St. Lawrence River surface water drainage systems. This boundary is an important consideration in water supply planning due to regulations and policies regarding the use of surface water from the Great Lakes - St. Lawrence River basin.



Base Map current as of 2020
Source: Wisconsin Department of Natural Resources