



Regional Water Quality Management Planning: What We Know About the Current State of Our Water Resources

SEWRPC Regional Water Quality Management Plan Update for the Greater Milwaukee Watersheds



**Presentation for
Root-Pike WIN Watershed Visioning Session
November 10, 2009
Michael G. Hahn, PE, PH
SEWRPC Chief Environmental Engineer**

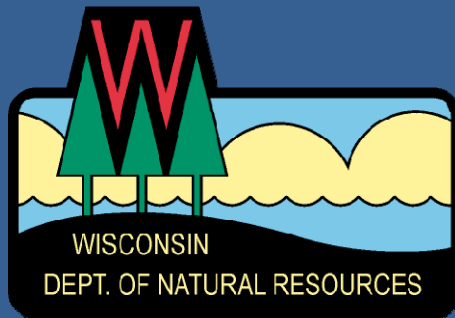


SEWRPC Regional Water Quality Management Plan Update/MMSD 2020 Facilities Plan

Cooperative, Intergovernmental, Watershed-Based Planning Program



Partners:



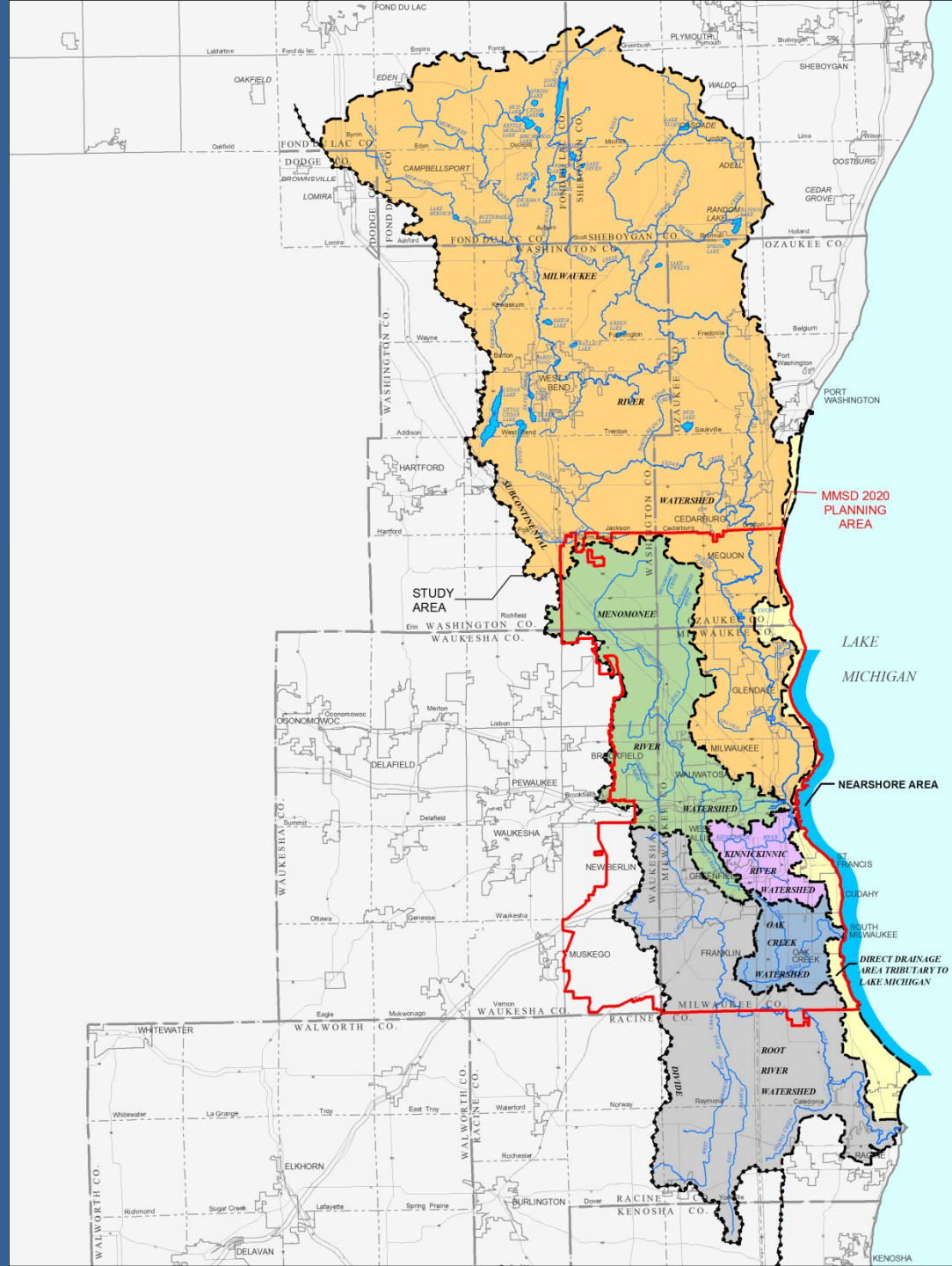
REGIONAL WATER QUALITY MANAGEMENT PLANNING IN SE WISCONSIN

- Initial 1979 Regionwide Plan
- Amended by SEWRPC Milwaukee Harbor Estuary Study in 1987
- 1995 SEWRPC Report Documented Status of Implementation of 1979 Plan
- Continuing Program is Ongoing—WDNR & SEWRPC Cooperative Program with U.S. EPA Support (sewer service areas, environmental corridor protection, etc.)
- 2003-2007 RWQMPS for Greater Milwaukee Watersheds

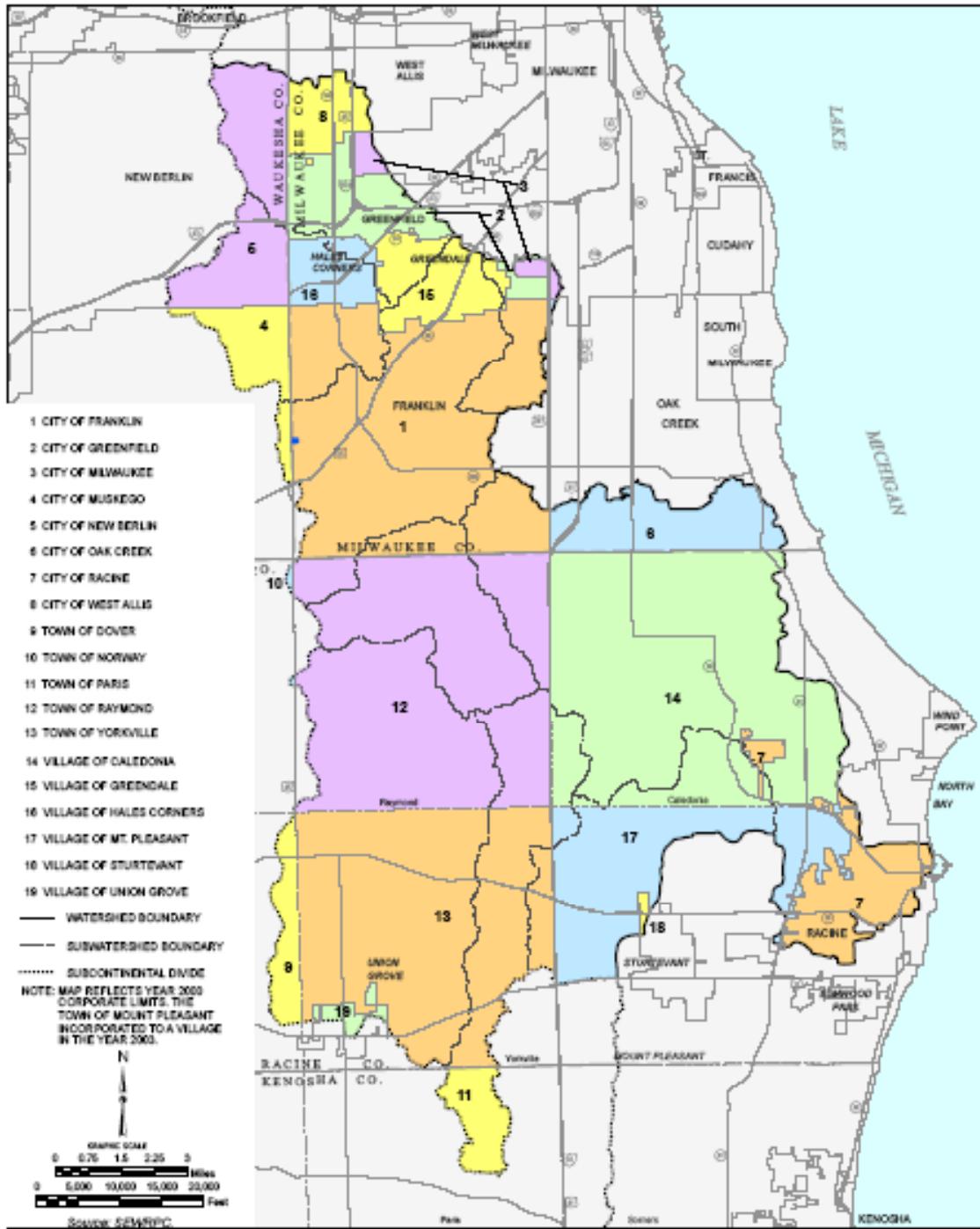
208 Plan Objectives

- Develop a watershed-based plan
 - Holistically address all water pollution sources
 - Cost-effectively improve water quality
 - Meet designated water use objectives and water quality standards/criteria **to the degree possible**
 - Consider alternatives to simply meeting current regulations for point source control if a greater improvement in water quality can be achieved cost-effectively

*SEWRPC Regional
Water Quality
Management Plan
Update Study Area*



CIVIL DIVISIONS WITHIN THE ROOT RIVER WATERSHED: 2000



SEWRPC Regional Water Quality Management Plan Update

- SEWRPC has Prepared Two Reports:
 - Planning Report No. 50, *A Regional Water Quality Management Plan Update for the Greater Milwaukee Watersheds*
 - Technical Report No. 39, *Water Quality Conditions and Sources of Pollution in the Greater Milwaukee Watersheds*
 - View reports at sewrpc.org under “Water Quality Management Plan” and “Plan Chapters”