

# Root River Watershed Restoration Plan: Report on Chapters I and II

Michael G. Hahn, P.E., P.H.  
Chief Environmental Engineer

Joseph E. Boxhorn, Ph.D.  
Senior Planner

Southeastern Wisconsin Regional  
Planning Commission

Presentation to the Root River  
Restoration Planning Group

May 16, 2012



**SEWRPC**

Serving the counties of  
Kenosha, Milwaukee,  
Ozaukee, Racine, Walworth,  
Washington, and Waukesha

# Partners and Funding Agencies



Municipalities and  
Counties of the Root  
River Watershed



## Plan Approach

1. Summarize Recommendations of the Regional Water Quality Management Plan Update (RWQMPU)
2. Evaluate Implementation of the RWQMPU
3. Inventory Recent and Ongoing Projects, Programs, and Initiatives and Integrate these Into Recommendations
4. Review and Refine Initially Identified Focus Issues
5. Characterize the Watershed Concentrating on Features Related to the Focus Issues

## Plan Approach

6. Identify Targets to be Achieved by the End of the Plan Period
7. For Each Target, Identify Actions to be Taken
8. Identify Foundation Actions
9. Present Actions in Addition to those Recommended in the RWQMPS
10. Develop an Implementation Strategy

## Report Chapters

- I. Introduction
- II. Summary of recommendations of the RWQMPU for the Root River and evaluation of implementation to date
- III. Inventory of relevant plans, programs, and initiatives
- IV. Characterization of the watershed
- V. Description of targets to be achieved and alternative management measures
- VI. Recommended watershed restoration plan
- VII. Implementation strategies

The plan will be documented in:

SEWRPC Community Assistance Planning Report  
No. 316, *A Watershed Restoration Plan for the  
Root River Watershed*

# Chapter I—Introduction

- Plan Purpose
- Background
  - Geography of the watershed
  - Description of problems
- Description of Planning Process
  - Focus issues
  - Plan review

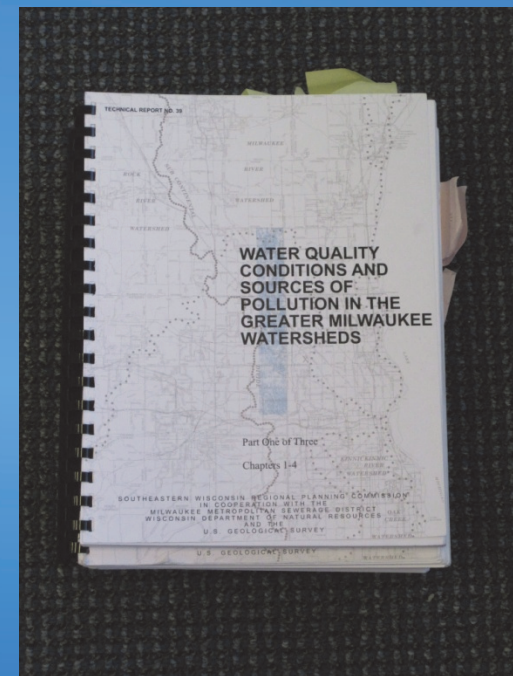
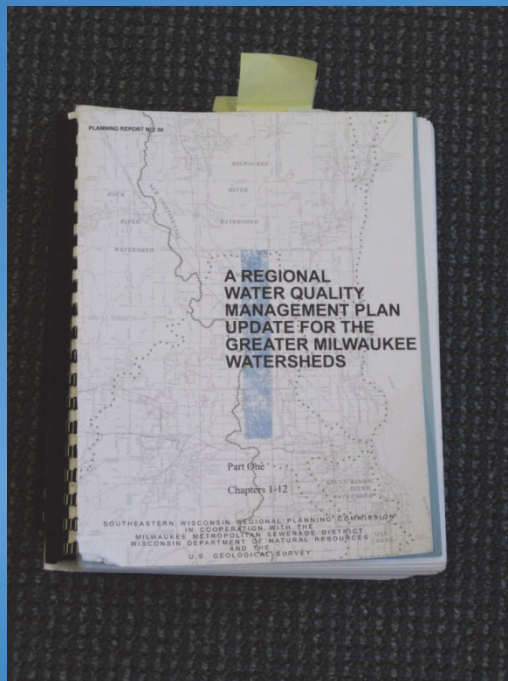
# Chapter II—Recommendations of the Regional Water Quality Management Plan Update for the Root River Watershed





# Regional Water Quality Management Plan Update—2007 (RWQMPSU)

- Updates regional plan from 1979
- Five watersheds, Lake Michigan direct drainage, Lake Michigan nearshore area



# Recommendations of the Regional Water Quality Management Plan Update

- Land Use 5
- Point Source Abatement 9
- Rural Nonpoint Source Controls 11
- Urban Nonpoint Source Controls 8
- Instream Water Quality Measures 9
- Inland Lake Water Quality 3
- Auxiliary Water Quality Measures 12
- Groundwater Management 4
- Water Use Objectives 2

# Implementation Status of the Regional Water Quality Management Plan Update

- Classified recommendations into three groups
  1. Recommendations that reflect existing regulatory requirements 15
  2. Recommendations that are in various stages of implementation 38
  3. Recommendations that are not yet implemented 10

# Recommendations that Reflect Regulatory Requirements

- Examples

- Regulation of point sources through the Wisconsin Pollutant Discharge Elimination System
- Bans and restrictions on possession, transport, transfer, and introduction of invasive species
- Phosphorus fertilizer ban partially implements fertilizer management program recommendation

# Recommendations that Reflect Regulatory Requirements

- Examples
  - Local pet litter ordinances
  - Most of the municipalities in the watershed have them



# Recommendations in Various Stages of Implementation

- Most of the recommendations
- Examples
  - Construct and maintain local sanitary sewer systems
  - Implement practices to reduce soil loss from cropland below the tolerable soil loss rate
  - Establish riparian buffers
  - Restore and enhance stream channels

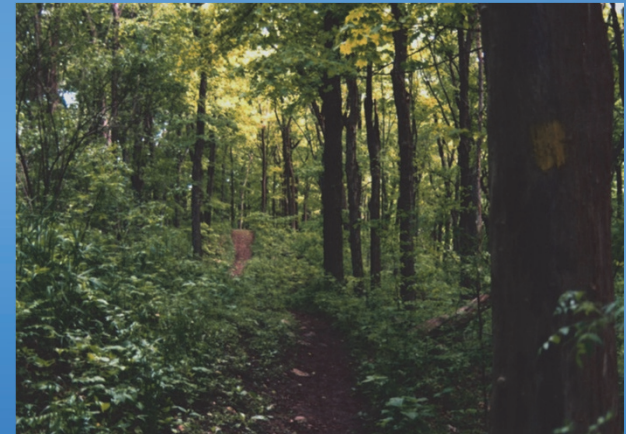
# Recommendations in Various Stages of Implementation

- Collection programs for expired and unused medicines
- Three types of programs
  1. Collection events
  2. Drop-off centers and boxes
  3. Mail back programs
- Most of the watershed is covered by some program



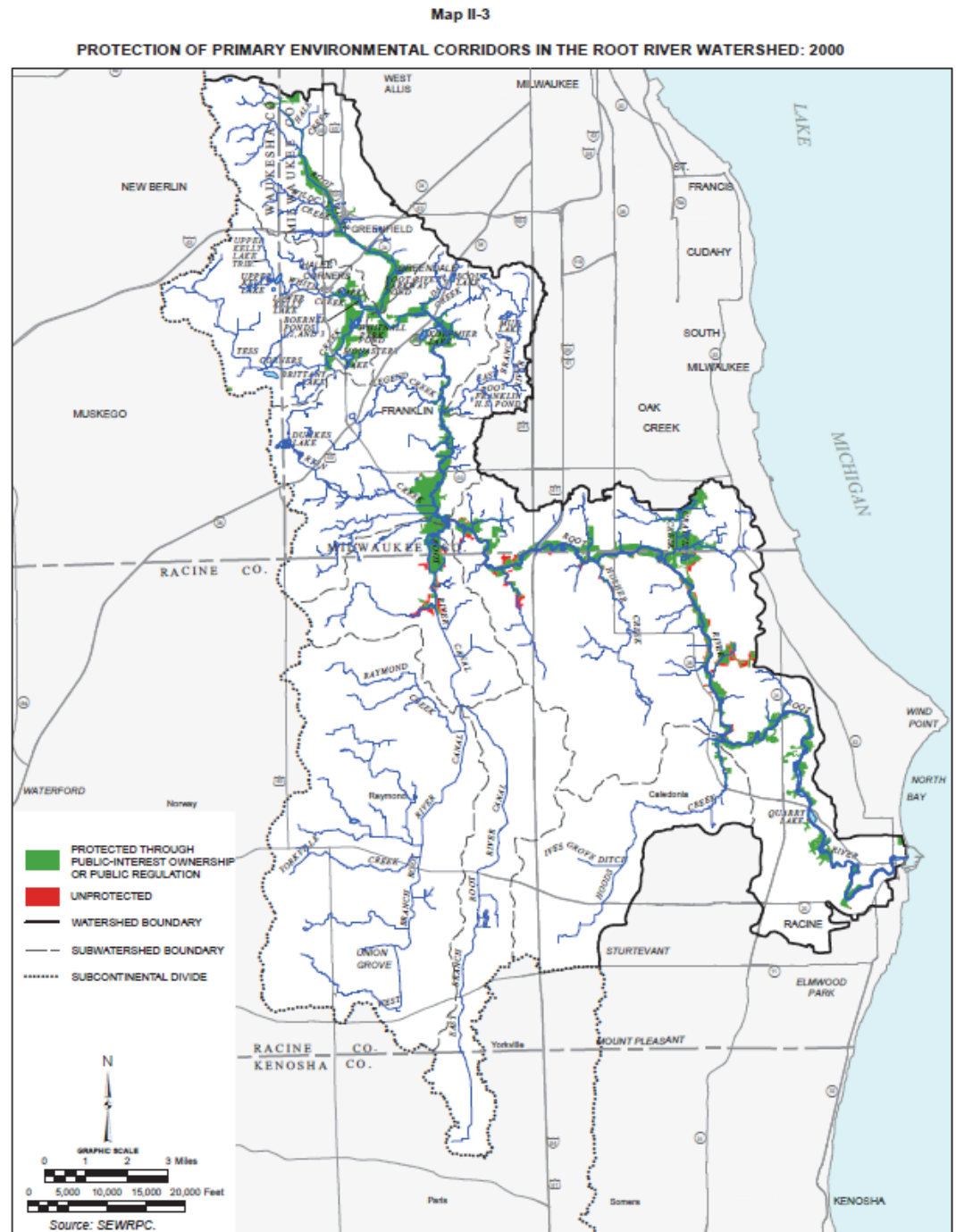
# Recommendations in Various Stages of Implementation

- Examples
  - Preserve primary environmental corridors in essentially natural, open uses
    - Areas in the landscape containing especially high value natural, scenic, historic, scientific, and recreational features.



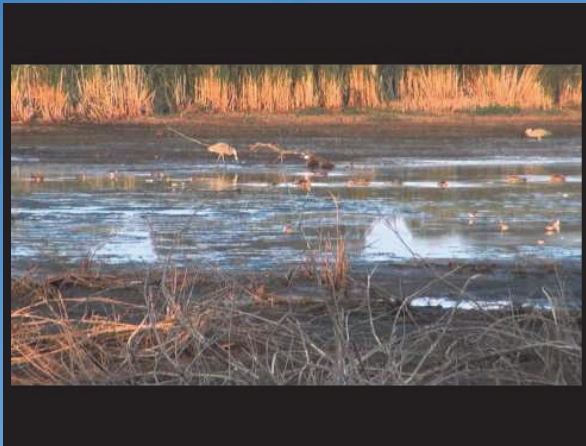


- 6,284 acres of primary environmental corridor in the Root River watershed
- 5,951 acres (95 percent) are protected
  - Public interest ownership
  - Floodplain and shoreland zoning
  - Sewer extension rules
  - Local land use regulation



# Recommendations in Various Stages of Implementation

- Examples
  - Preserve identified natural areas and critical species habitat sites in public or public interest ownership



Nicholson Wildlife Area

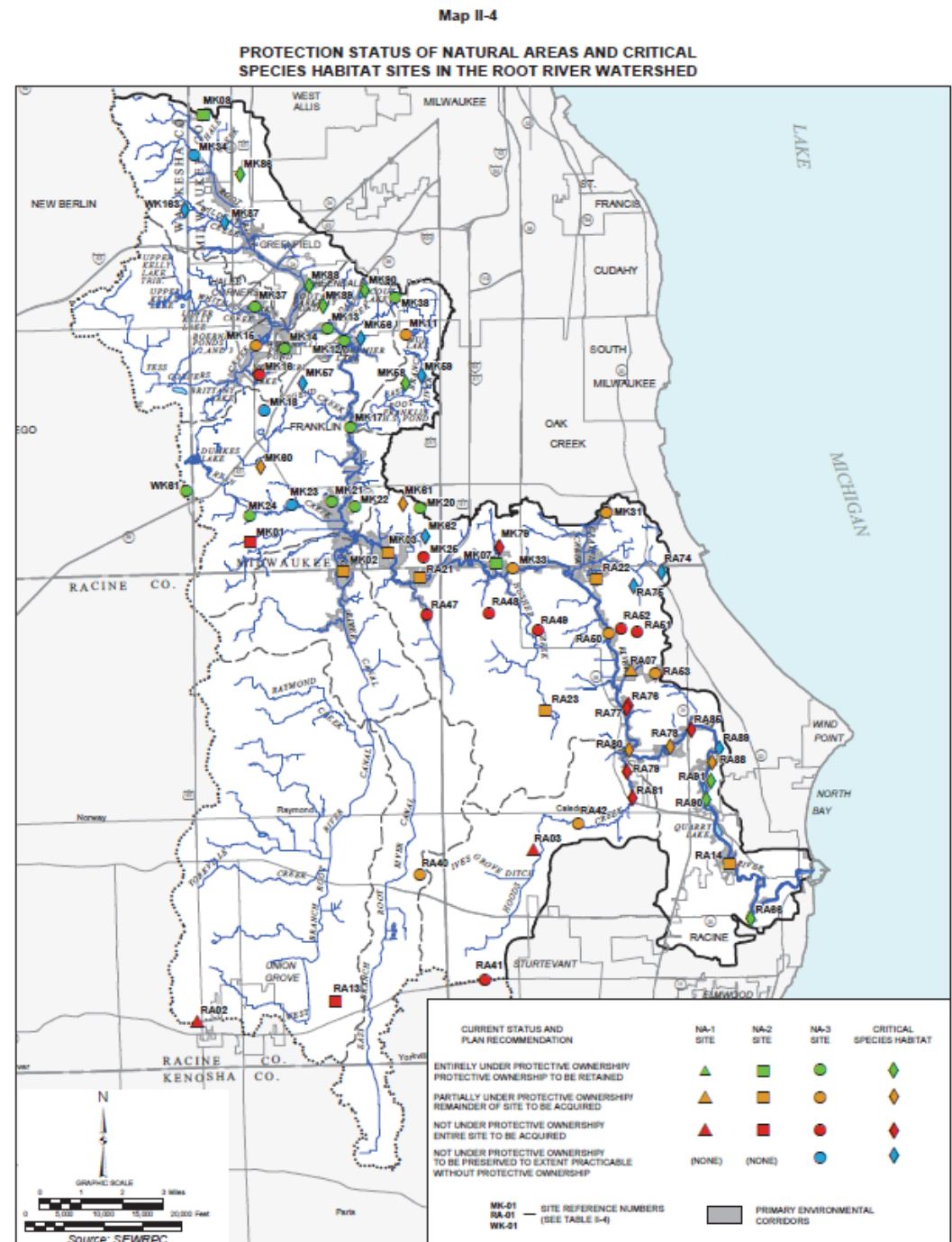


Luther Parker Cemetery Prairie



Renak-Polak Woods

- 43 natural area sites
- 28 critical species habitat sites
- 3,845 acres
  - 159 acres in other watersheds
- 2,313 acres in public or public-interest ownership
- 1,337 acres recommended for public or public-interest ownership



# Recommendations that Are Not Yet Implemented

- Examples

- Abandoning the Yorkville wastewater treatment plant at the end of its useful life
- Increasing the levels of cost-share funding available for funding barnyard runoff BMPs
- Upgrading water use objectives for Hoods Creek, Tess Corners Creek, Whitnall Park Creek

## Next Steps

- Inventory existing plans, programs, and initiatives that relate to the focus issues
  - Water quality, recreational use and access, habitat, and flooding
- Characterize the watershed
  - Finer scale
  - Examine factors most closely related to the focus issues
  - Update and expand those analyses that are most closely related to the focus issues

# Project Web Site

- <http://www.sewrpc.org/SEWRPC/Environment/Root-River-Watershed-Restoration-Plan.htm>
  - Presentations from RRRPG meetings
  - Draft chapters as they are completed
  - Comment screen

