



Community Engagement

Community Engagement & Benefits Task Force Meeting
June 9, 2026



VISION 2060

Purpose



VISION 2060 will present a long-term vision for land use, development, and transportation, guiding the decisions and investments needed to support a connected and thriving Region, its communities, and landscapes for decades to come.

Audiences



- Residents of the Region
- Traditionally underrepresented populations
- People with unique transportation challenges
- Other interested parties

Goals

• • •

1. Create meaningful and relevant resources that can be used throughout all engagement phases
2. Ensure attention is given to groups who've had historic lower levels of participation
3. Engage in meaningful and relevant dialogue
4. Achieve a mix of virtual and in-person engagement across the Region
5. Ensure contributions from the public have impact



Phase 1

Phase 2

Phase 3

Phase 4

Phase 5

**Defining
the Vision**

**Refine
Alternatives**

**Community
Preferences**

**Vision
Feedback**

Awareness

Summer – Fall
2026

Winter 2026 –
Summer 2027

Summer 2027 –
Winter 2027

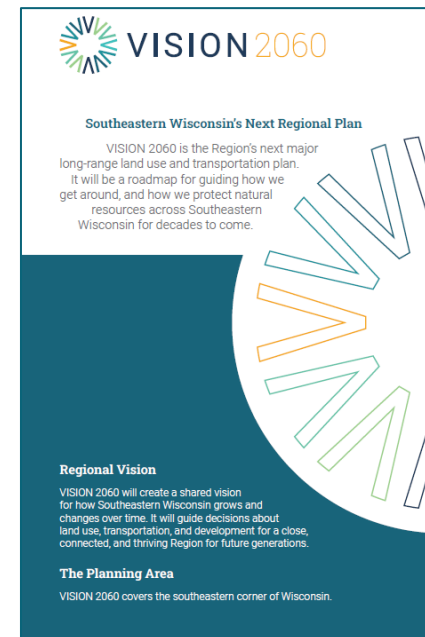
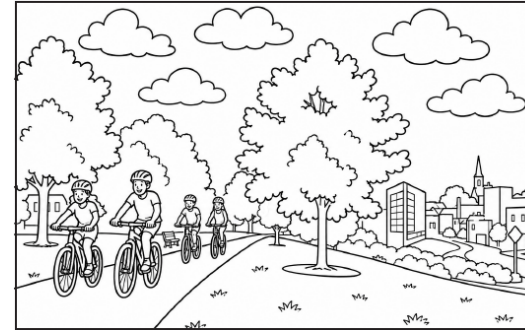
Winter 2027 –
Spring 2028

Spring 2028 –
Ongoing

Outreach Materials

For all phases

- QR Code Bookmarks
- Brochure
- Kids Coloring Pages
- Stickers
- Pens
- Notebooks



Phase	Description	Timing	Major Steps	Potential Public Meeting Timing
1	Defining the Vision	Summer – Fall 2026	AC CEB Task Force Public Meeting	August or September 2026
2	Refine Alternatives	Winter 2026 – Summer 2027	AC CEB Task Force Public Meeting	June 2027
3	Community Preferences	Summer – Winter 2027	AC CEB Task Force	--
4	Vision Feedback	Winter 2027 – Spring 2028	AC CEB Task Force Public Meeting	October 2027
5	Awareness & Adoption	Spring 2028 – Ongoing	AC CEB Task Force	--

Overall Timeline

Discussion

- What engagement methods have worked well in your recent experience?
- How can we offer meaningful engagement throughout all phases and avoid “outreach fatigue?”



Ideas

What would you like to see in future outreach phases?



Contacts

Miranda Walser, Planner
mwals@sewrpc.org

Kaleb Kutz, Planner
kkutz@sewrpc.org

www.sewrpc.org

THANK YOU

Please reach out for more information!



VISION 2060