

Southeastern Wisconsin **Regional Planning Commission**



CEB Task Force Meeting

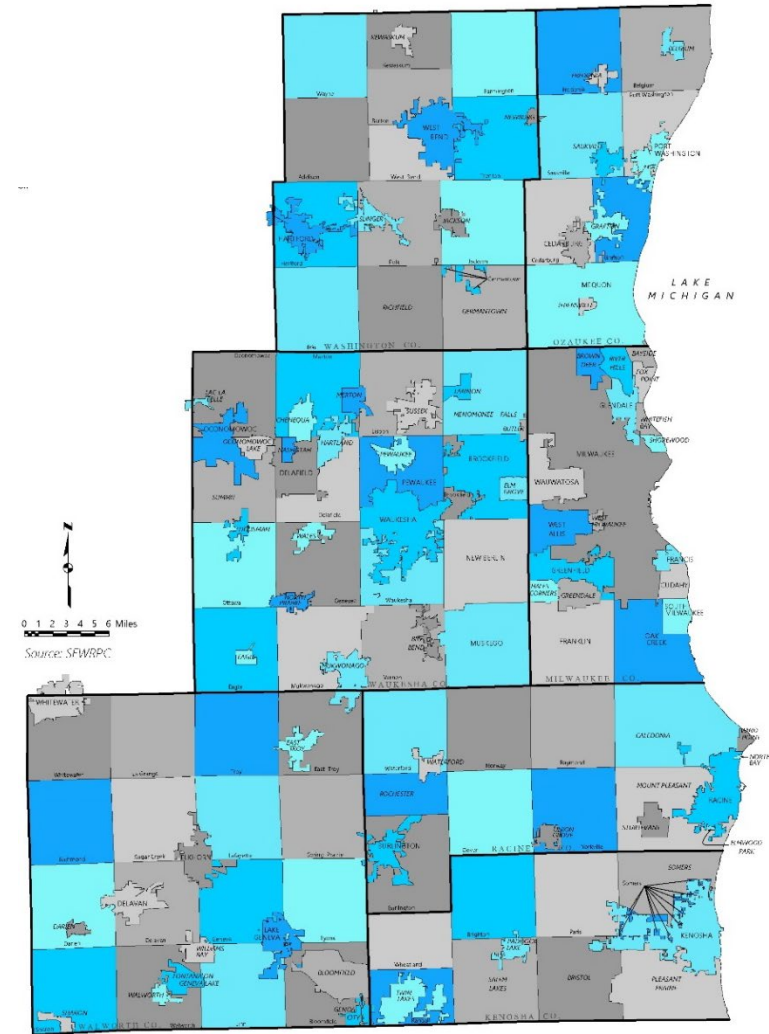
March 20, 2026

●●●●● Southeastern Wisconsin

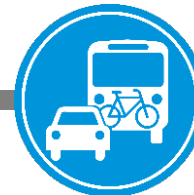
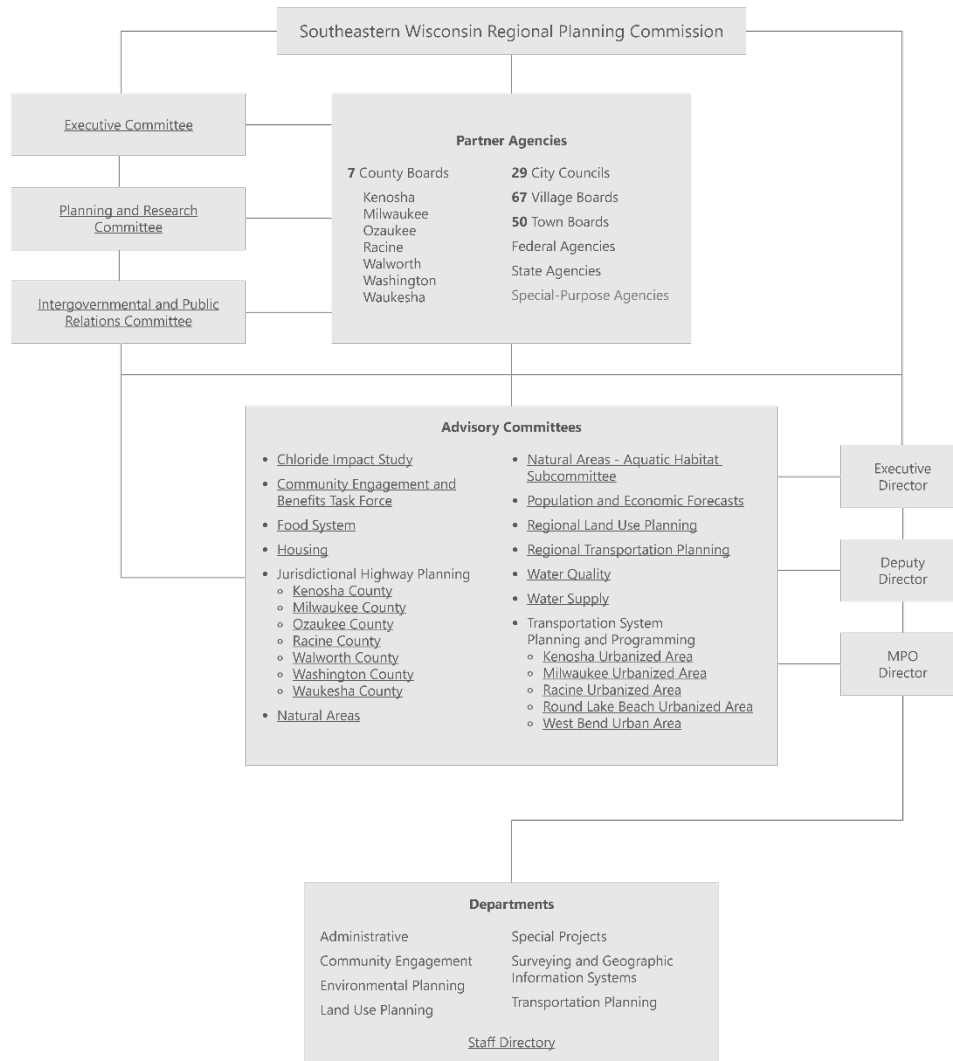
➤ One Region

- 7 counties
- 146 cities, villages, and towns
- 5% of State's land area, 35% of State's population and jobs

➤ Advisory land use and infrastructure planning to local, county, and State governments

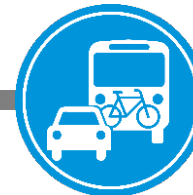
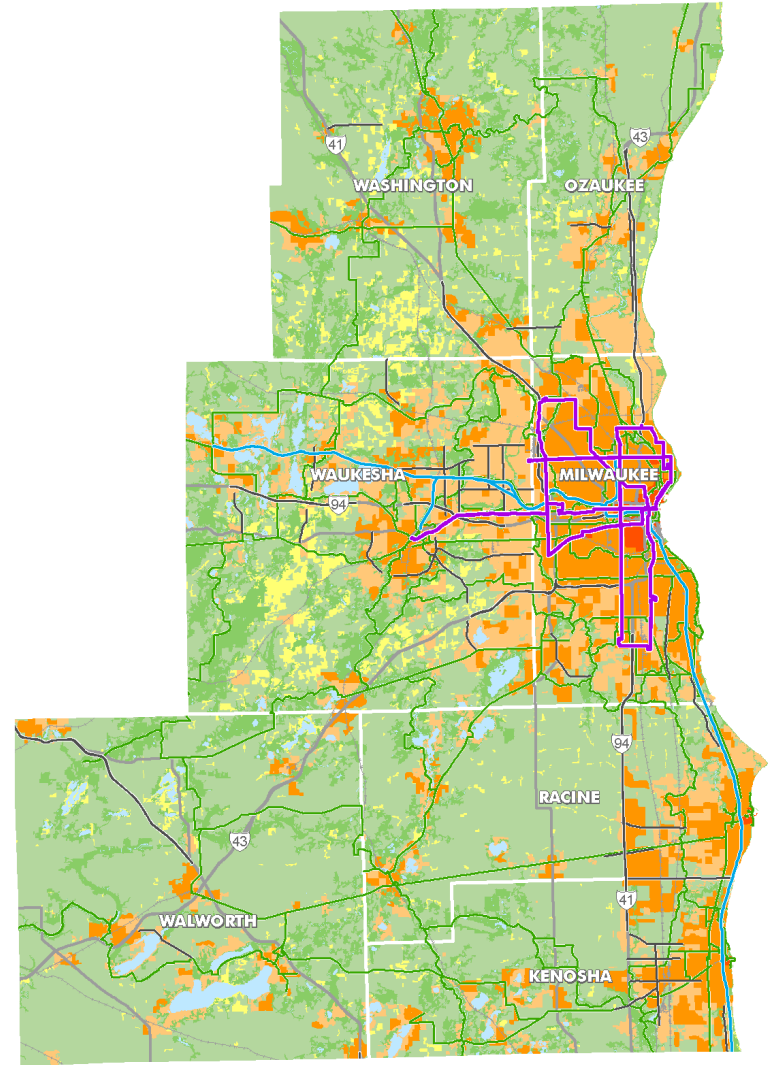


Organization and Funding

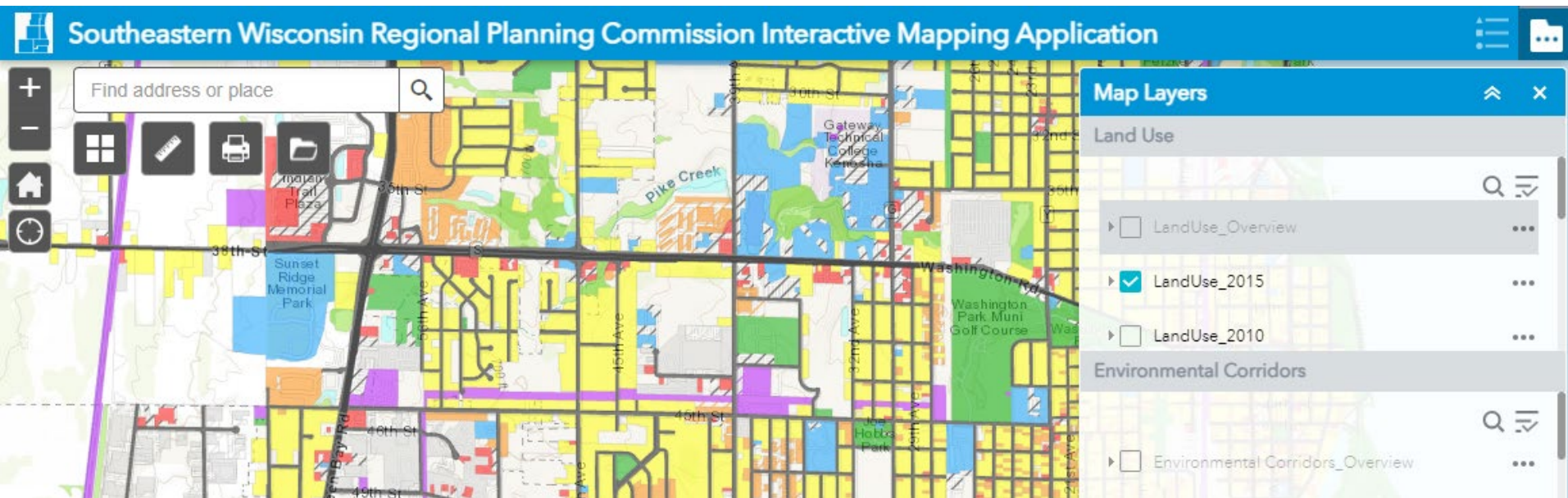


Designations

- Regional Planning Commission
- Metropolitan Planning Organization
- Areawide Water Quality Management Planning Agency



- Provide basic planning and engineering data and analyses
- Develop a framework of long-range areawide plans
- Coordinate day-to-day planning activities



Regional Plans

- VISION 2050
- CEDS
- Chloride
- Housing
- Food System
- Natural Areas
- Park and Open Space
- Water Supply
- Water Quality

Services

- County/local plans
- Mapping
- Inventory data
- Demographic data
- Surveying
- Fieldwork
- TIP
- Solve Problems!



●●●●● Task Force Guidance

- Community engagement
- Regional Water Supply Plan
- Regional Housing Plan
- VISION 2050
- Regional Food System Plan
- CEDS
- Regional Natural Areas Plan Update
- Regional Chloride Impact Study

