

NOTICE OF MEETING
SOUTHEASTERN WISCONSIN REGIONAL PLANNING COMMISSION
ANNUAL MEETING

DATE: Wednesday, June 19, 2019

TIME: 3:00 p.m.

PLACE: Riveredge Nature Center
4458 W. Hawthorne Dr.
Newburg, WI 53060
(see map enclosed)

TENTATIVE AGENDA:

1. Roll call
2. Remarks by Ms. Jessica Jens, Executive Director. Riveredge Nature Center
3. Introduction and seating of new Commissioner (Walworth County)
Motion required
4. Approval of minutes of Quarterly Commission Meeting of March 6, 2019 (copy enclosed)
Motion required
5. Election of Commission Treasurer
Motion required
6. Treasurer's Report with Statement of Revenues and Disbursements (copies enclosed)
Motion required
7. Standing Committee Reports
 - a. Planning and Research Committee (copy enclosed)
Motion required
 - b. Administrative Committee (copy enclosed)
Motion required
 - c. Executive Committee (copy enclosed)
Motion required
8. Consideration of adoption of budget for calendar year 2020 (copy enclosed)
Motion required
9. Consideration and adoption of SEWRPC Planning Report No. 17 (2nd Edition): *A Jurisdictional Highway System Plan for Ozaukee County* (copy of Report and Resolution No. 2019-12 enclosed)
Motion required
10. Consideration and adoption of SEWRPC Community Assistance Planning Report No. 331: *Ozaukee County Transit Development Plan: 2019 – 2023* (copy of Report and Resolution No. 2019-13 enclosed)
Motion required

11. Consideration and adoption of Third Amendment to *VISION 2050: A Regional Land Use and Transportation Plan for Southeastern Wisconsin, Establishing Targets for Federal Performance Measures: Transit Asset Management, National Highway System Condition and Performance, Freight Performance, and Congestion Mitigation and Air Quality Improvement Federal Performance Measures* (copy of Report and Resolution No. 2019-14 enclosed)
Motion required

12. Correspondence/Announcements

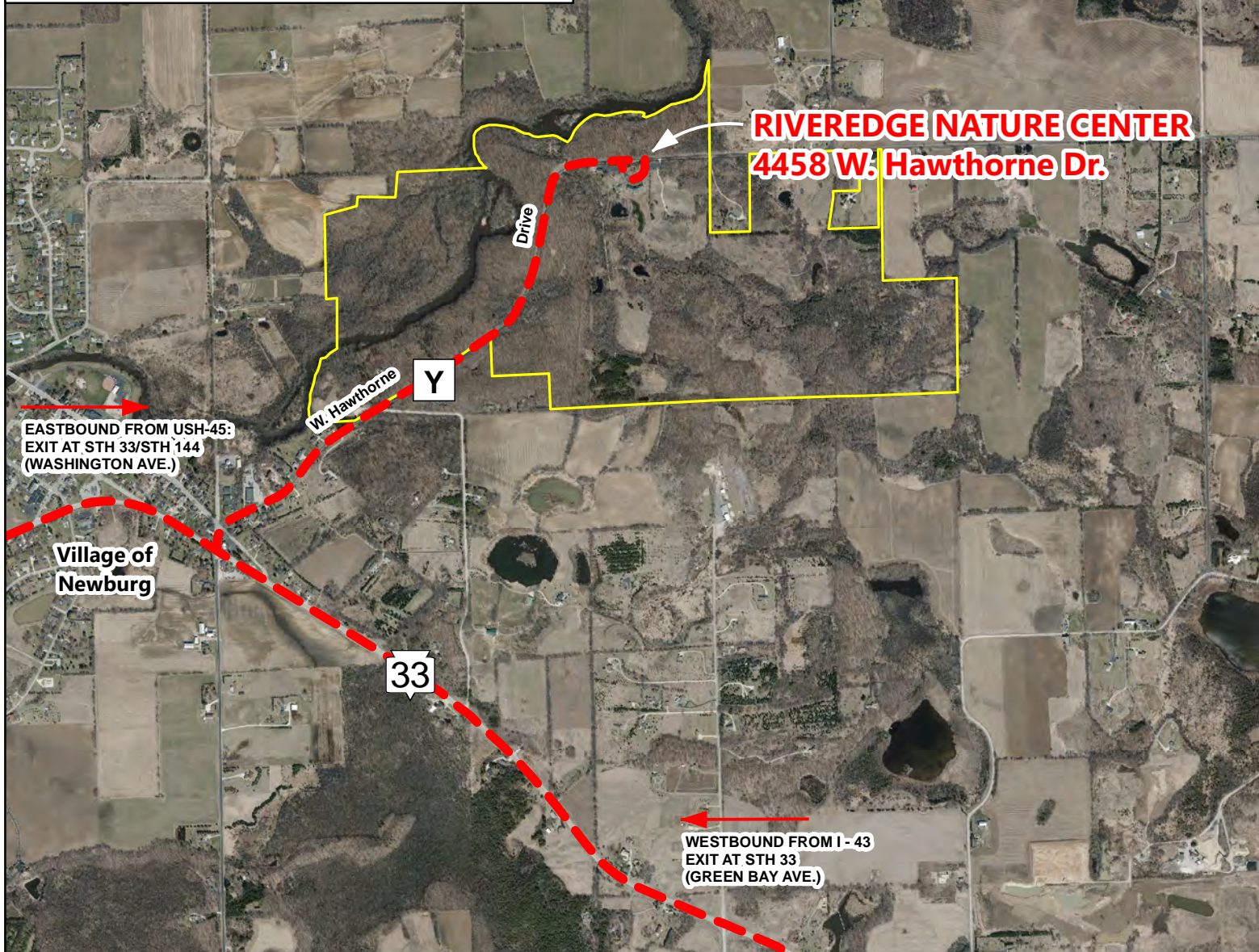
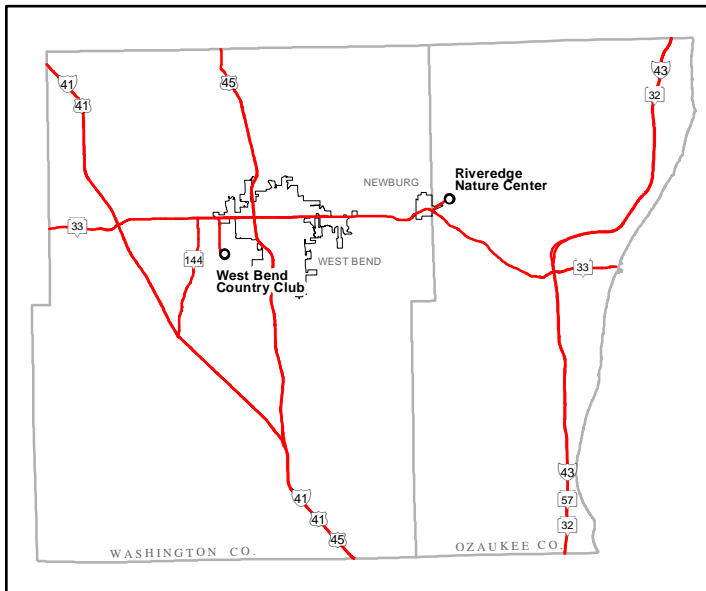
13. Adjournment
Motion required

Charles L. Colman
Chairman

CLC/KJM/EAL/ce
#248511

Enclosures: Map
Minutes (March 2019 Meeting)
Reports
2020 Budget

RIVEREDGE NATURE CENTER



WEST BEND COUNTRY CLUB

