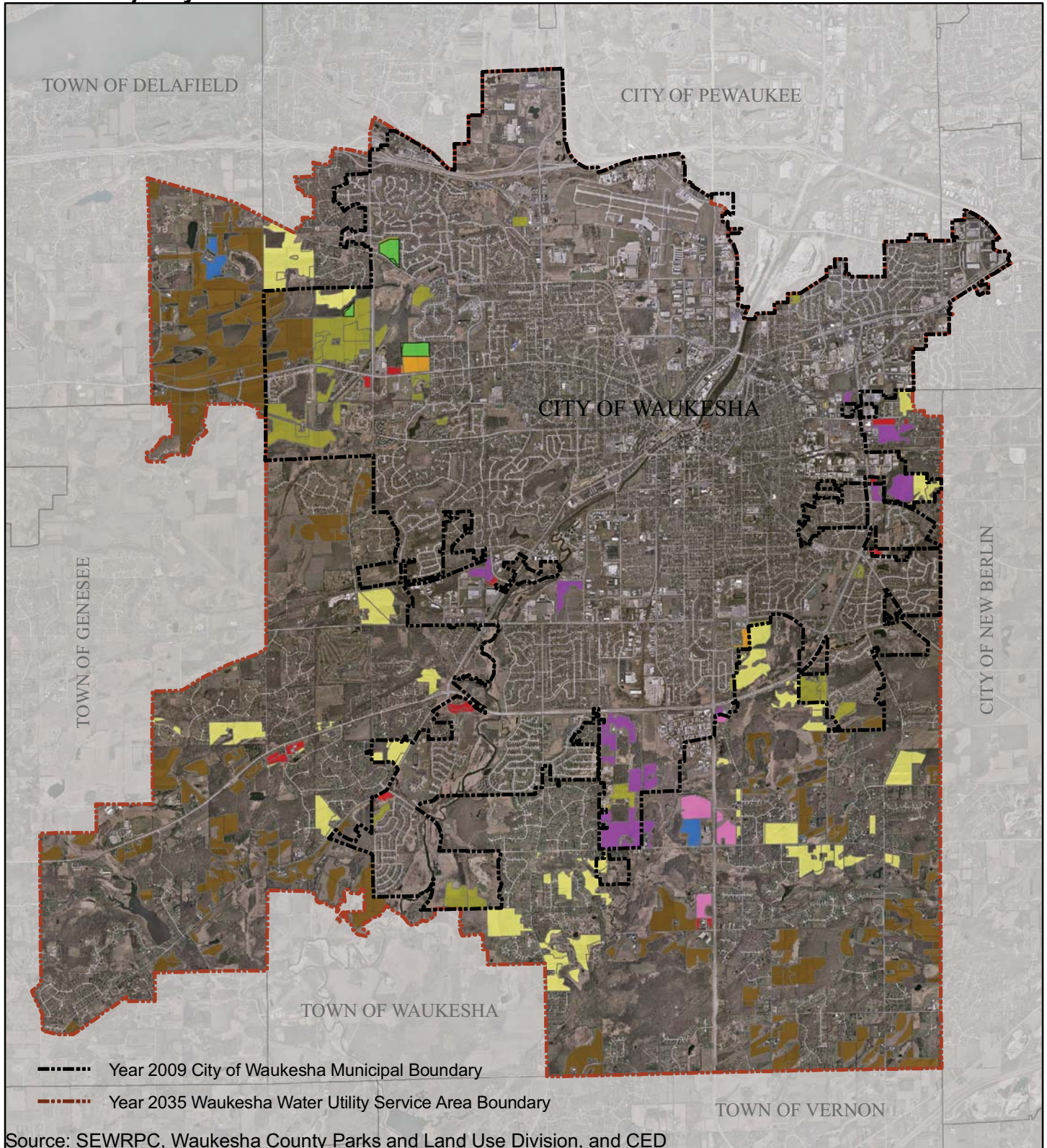











**Map F-13D: Projected Development and Planned Land Uses Within the 2035 Waukesha Water Utility Projected Service Area**



Source: SEWRPC, Waukesha County Parks and Land Use Division, and CED

- |   |  |
|---|--|
|  Mixed Use                                      |  Commercial                     |
|  High Density Residential                       |  Governmental and Institutional |
|  Medium Density Residential                     |  Industrial                     |
|  Low Density Residential                        |  Recreational                   |
|  Very Low Density Residential (non serviceable) |  |

