

## Attachment 2

### **CED's Preliminary Waukesha Water Utility Land Use assessment:**

Map and results are based on a GIS evaluation of SEWRPCs updated developed land use file (year 2009), Park and Open space lands data, Waukesha County Comprehensive plan data on projected land uses, and Kate Madison's potentially developable lands file (all contiguous lands over 0.5 acres that meet the criteria stated in attachment):

**Year 2035 Service Area = 32,209 acres**

Developed, Serviceable Lands within 2035 service area (as of 2009) = 16,659 acres (yellow)

*Total developable and serviceable lands within 2035 service area = 1,789 acres (pink)*

Non Serviceable Lands within Total 2035 Projected Service Area = 13,380 acres

-Environmental Corridor and Existing and Projected Park and Open Space Lands = 10,316 acres

    Environmental Corridors = 6,490 acres (green with green dots)

    Park and Open Space Lands= 3,584 acres (white with green dots)

-Suburban and Rural Density Residential Lands = 3,826 acres

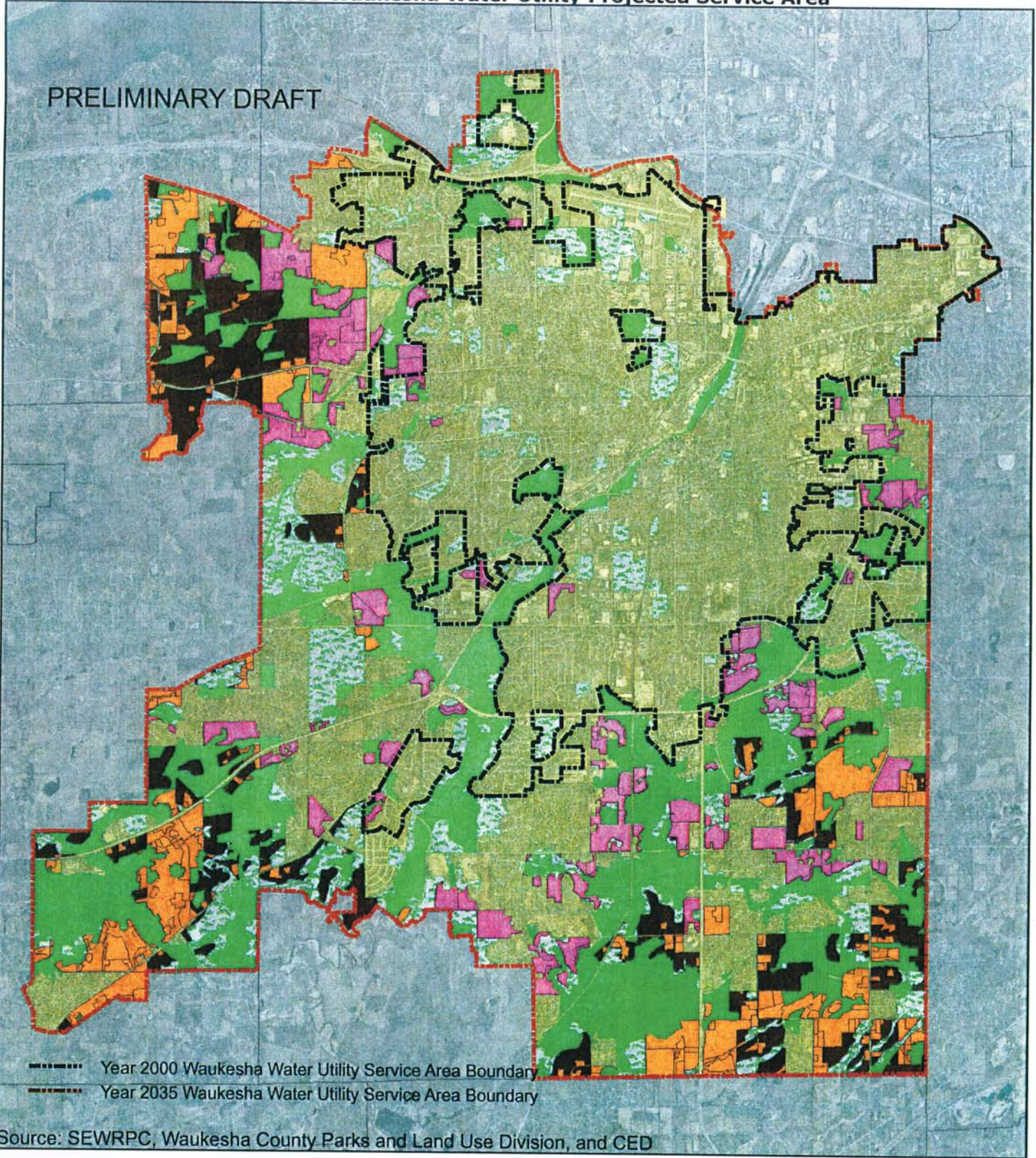
    Existing = 2,076 acres per SEWRPC (orange)

    Planned = 2,070 acres planned development under Wauk. County Comprehensive Plan (brown)




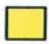




# Development within the 2035 Waukesha Water Utility Projected Service Area

PRELIMINARY DRAFT



----- Year 2000 Waukesha Water Utility Service Area Boundary  
----- Year 2035 Waukesha Water Utility Service Area Boundary

Source: SEWRPC, Waukesha County Parks and Land Use Division, and CED

-  Areas to be Developed and Served within the 2035 Projected Service Area (as of Year 2009)
-  Areas Developed as of 2009
-  Environmental Corridors
-  Parks, and Open Spaces (very limited services)
-  Areas With Existing Development NOT to be served under Smart Growth Plan and RLUP
-  Projected Areas With Proposed Development NOT to be served under Smart Growth Plan and RLUP

