

Village of Mount Pleasant Bicycle & Pedestrian Plan

The Village of Mount Pleasant is preparing an update to its 2030 Bicycle Master Plan with assistance from the Southeastern Wisconsin Regional Planning Commission. This updated plan will recommend bicycle and pedestrian facilities in the Village that, when built, will create a well-connected bicycle and pedestrian network with links to surrounding communities. The plan update will also identify strategies to encourage more walking and biking trips, and policies to guide the development of "complete streets," or streets that are designed to meet the mobility needs of all users.

Village of Mount Pleasant residents walk and bike to access jobs, enjoy recreational amenities, improve physical health, and participate in the community. This plan builds the framework to coordinate the planning, construction, and maintenance of bicycle and pedestrian infrastructure in the Village. It also ensures that as state and local entities build these facilities, they meet the Village's needs and provide convenient, safe travel for people of all ages and backgrounds.



Structure of the Plan

- Inventory of existing on-and off-street bicycle and pedestrian facilities and their relationships to land use, employment, and transit service
- Assessment of bicycle and pedestrian crash data and recommendation of strategies for improving safety through engineering, education, enforcement, and encouragement
- Development of goals, policies, and design guidelines to address bicycle and pedestrian issues and construct facilities that improve walking and bicycling
- Identification of final recommended bicycle and pedestrian facilities

Public Information Meeting #2

Public participation is critical for the success of this plan. Review and provide comments on the preliminary drafts of Section 3: *Safety Considerations* and Section 4: *Goals and Strategies* at the upcoming public meeting:

Wednesday, May 7, 2025

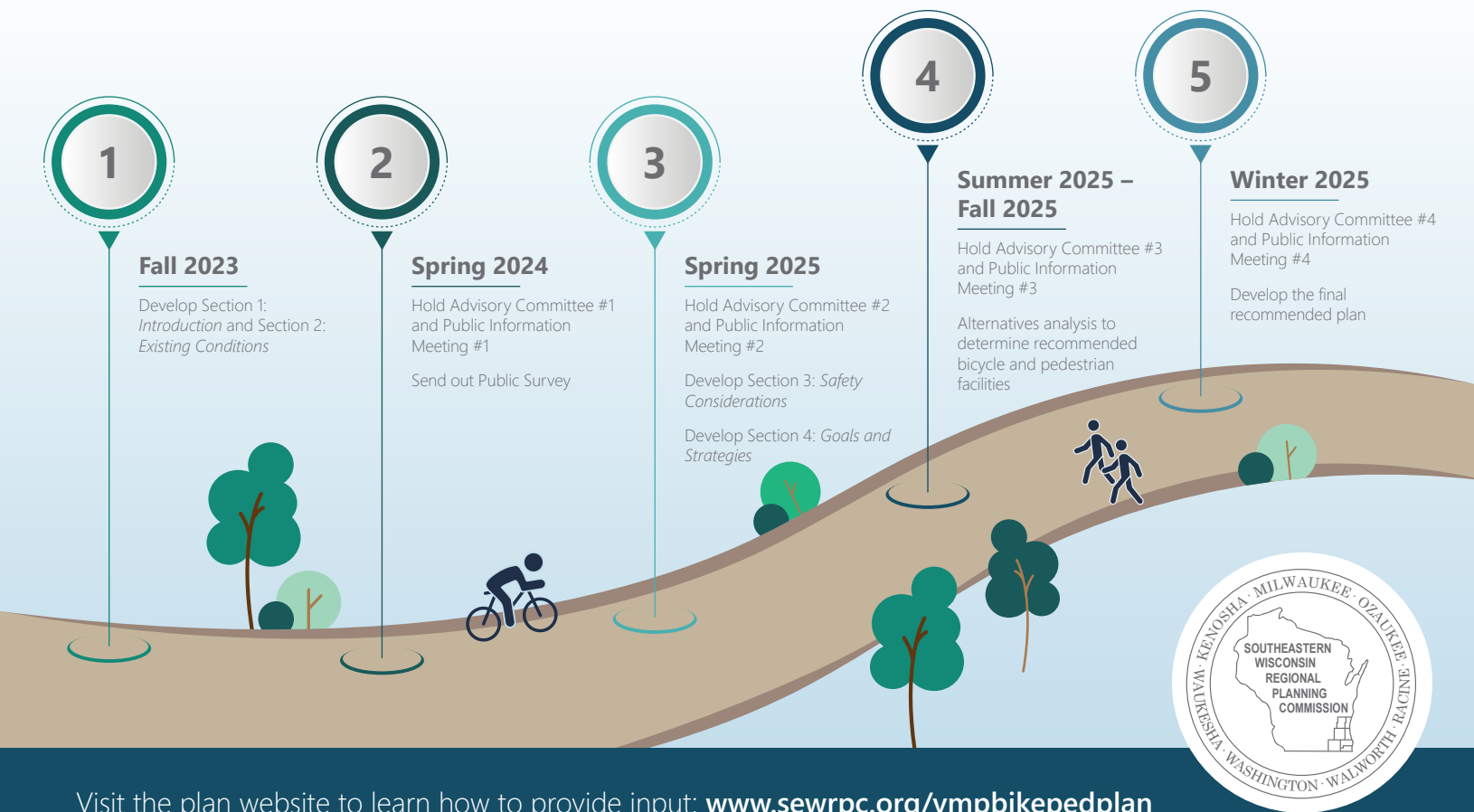
4:00 p.m. - 6:00 p.m.

(open house format)

Mt. Pleasant Village Hall

Ebe Auditorium, Room B114

8811 Campus Drive, Mt Pleasant, WI 53406



Visit the plan website to learn how to provide input: www.sewrpc.org/vmpbikepedplan