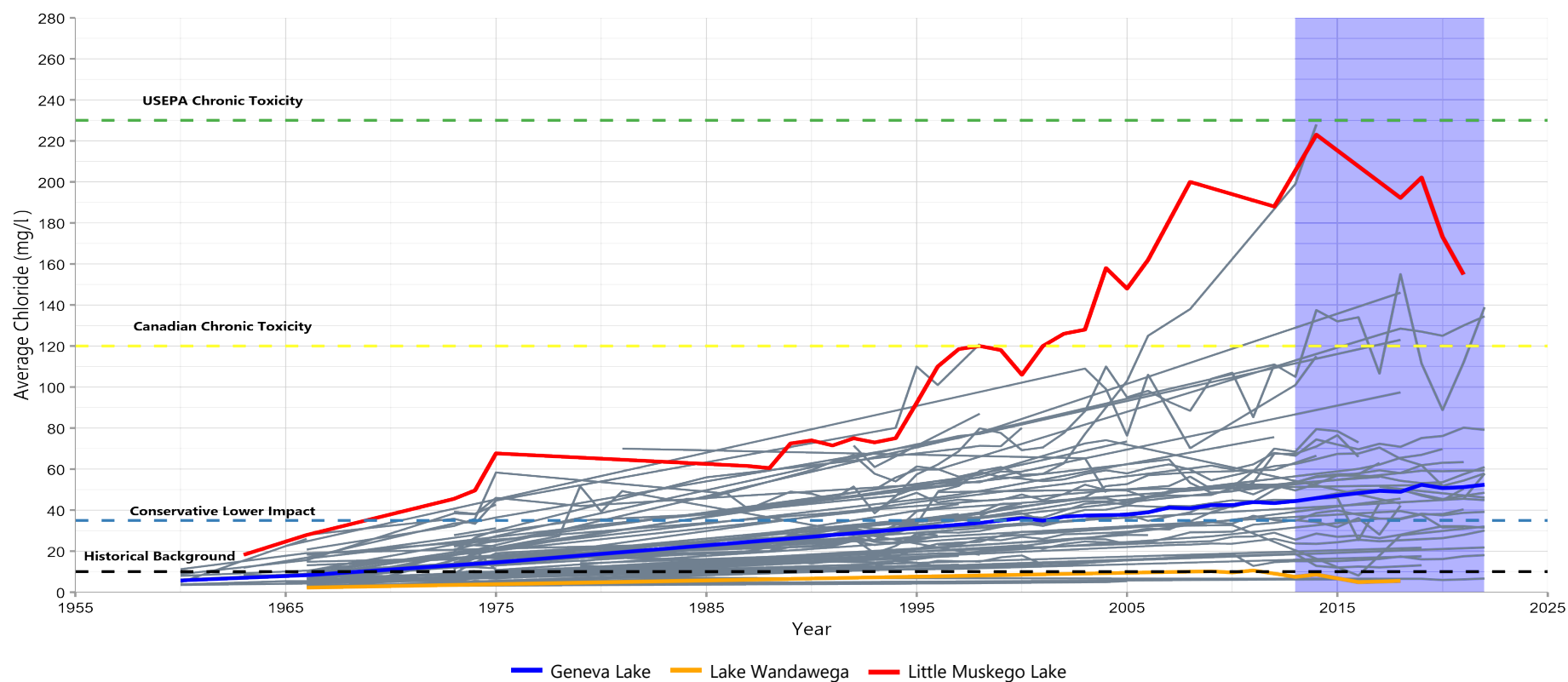


Annual Average Chloride Concentrations Among Study Area Lakes Compared to Biological Thresholds: 1960-2022



Note: The shaded blue area indicates the recent conditions (2013 through 2022) used for this study. The colored dashed lines indicate the natural background concentrations for the Region (background) or the various biological impacts of increasing chloride concentrations. Each lake is represented by a grey line or a colored line to highlight individual lakes.

Source: SEWRPC