

PUBLIC TRANSIT-HUMAN SERVICES TRANSPORTATION COORDINATION PLAN FOR WALWORTH COUNTY: 2008

**SOUTHEASTERN WISCONSIN
REGIONAL PLANNING COMMISSION**

KENOSHA COUNTY

Anita M. Faraone
Adelene Greene
Robert W. Pitts

RACINE COUNTY

Susan S. Greenfield
Mary A. Kacmarcik
Michael J. Miklasevich

MILWAUKEE COUNTY

William R. Drew,
Treasurer
Lee Holloway
George A. Torres

WALWORTH COUNTY

Richard A. Hansen,
Vice-Chairman
Gregory L. Holden
Nancy Russell

OZAUKEE COUNTY

Thomas H. Buestrin,
Chairman
William E. Johnson
Gus W. Wirth, Jr.
Secretary

WASHINGTON COUNTY

John M. Jung
Daniel S. Schmidt
David L. Stroik

WAUKESHA COUNTY

James T. Dwyer
Anselmo Villarreal
Paul G. Vrakas

**SOUTHEASTERN WISCONSIN REGIONAL
PLANNING COMMISSION STAFF**

Philip C. Evenson, AICP Executive Director
Kenneth R. Yunker, PE Deputy Director
Nancy M. Anderson, AICP Chief Community Assistance Planner
Christopher T. Hiebert Chief Transportation Engineer
Michael G. Hahn, PE, PH Chief Environmental Engineer
Elizabeth A. Larsen Business Manager
John G. McDougall Geographic Information Systems Manager
John R. Meland Chief Economic Development Planner
Dr. Donald M. Reed Chief Biologist
Kenneth J. Schlager, PE Chief Telecommunications Engineer
Donald P. Simon, RLS Chief Planning Illustrator
William J. Stauber, AICP Chief Land Use Planner

Special acknowledgment is due Mr. Albert A. Beck, Principal Planner, Ms. Sonia Dubielzig, Transportation Planner, and Mr. Eric D. Lynde, Transportation Engineer, for their contributions to the preparation of this report.

MEMORANDUM REPORT NO. 182

**PUBLIC TRANSIT-HUMAN SERVICES
TRANSPORTATION COORDINATION PLAN
FOR WALWORTH COUNTY: 2008**

Prepared for Walworth County by the
Southeastern Wisconsin Regional Planning Commission

W239 N1812 Rockwood Drive
P.O. Box 1607
Waukesha, Wisconsin 53187-1607
www.sewrpc.org

December 2008

(This page intentionally left blank)

TABLE OF CONTENTS

I.	INTRODUCTION	
	Federal and State Coordination Planning Requirements	1
	Role of the Southeastern Wisconsin Regional Planning Commission	1
II.	TRANSPORTATION NEEDS OF INDIVIDUALS WITH DISABILITIES, SENIORS, AND PEOPLE WITH LOW INCOMES	
	General Population Characteristics	3
	Transit-Dependent Population Characteristics	3
	Employment Characteristics	5
	Major Activity Centers	5
III.	CURRENT TRANSPORTATION SERVICES	
	Transportation Services for the General Public	6
	Human Services Transportation	6
IV.	ASSESSMENT OF TRANSPORTATION SERVICES AND IDENTIFICATION OF UNMET TRANSPORTATION NEEDS	
	Unmet Needs for Walworth County	7
V.	STRATEGIES TO ADDRESS UNMET NEEDS	
	Financial Strategies: Federal and State Funding Programs	9
	Prioritized Strategies to Address Unmet Needs	10
VI.	PLAN IMPLEMENTATION	
	Walworth County	12
	Mobility Manager	12
	All Transportation Providers	12

LIST OF APPENDICES

Appendix

A	List of Individuals and Agencies Invited to Attend the 2008 Meetings for Coordination Planning In Kenosha, Racine, and Walworth Counties	A-1
B	Record of First Meeting for 2008 Coordination Planning in Kenosha, Racine, and Walworth Counties	B-1
C	Record of Second Meeting for 2008 Coordination Planning in Kenosha, Racine, and Walworth Counties	C-1

(This page intentionally left blank)

I. INTRODUCTION

The Walworth County Public Transit-Human Services Transportation Coordination Plan, hereafter referred to as the Coordination Plan, is intended to provide a framework to assist community leaders, human services agencies, and public transit agencies to improve transportation services in Walworth County. The Coordination Plan assesses the existing transportation needs and services in the County, identifies unmet needs or service gaps, and presents a prioritized list of strategies to address those needs. By focusing on coordination strategies that use existing resources, the Coordination Plan aims to improve County residents' access to transportation in a cost-effective manner.

Federal and State Coordination Planning Requirements

The Coordination Plan was prepared in response to federal requirements of the Safe, Accountable, Flexible, Efficient Transportation Equity Act: A Legacy for Users (SAFETEA-LU), which was adopted into law in August of 2005. SAFETEA-LU requires that projects selected for funding under three Federal Transit Administration (FTA) programs—the Elderly Individuals and Individuals with Disabilities (Section 5310), Job Access and Reverse Commute (JARC), and New Freedom programs—be “derived from a locally developed public transit-human services transportation coordination plan.” In addition to these three programs, the Wisconsin Department of Transportation (WisDOT) requires that projects selected for funding under the Supplemental Transportation Rural Assistance Program (STRAP) be derived from a coordination plan.

Several agencies and organizations in Walworth County have received funding under the Section 5310 and JARC programs in the past. Therefore, the Coordination Plan will help ensure the eligibility of current and future transit projects funded through those programs.

The Coordination Plan includes the following elements required under Federal regulations:

- An assessment of transportation needs for individuals with disabilities, seniors, and people with low incomes;
- An assessment of available transportation services;
- Strategies to address the identified gaps between current services and needs, as well as opportunities to improve efficiencies in service delivery; and
- Priorities for implementing strategies.

Role of the Southeastern Wisconsin Regional Planning Commission

The Regional Planning Commission, at the request of WisDOT, and with guidance and input from human services agencies and public and private transit operators in each county, has facilitated the planning process and prepared the maps, tables, and inventories for the Coordination Plans for each of the seven counties in the Region. For the Walworth County Coordination Plan, Commission staff invited a wide range of stakeholders from Kenosha, Racine, and Walworth Counties to a series of two meetings in the City of Burlington to identify the unmet transportation needs in each of the three counties and between the counties, and develop strategies to address the needs. The invitation list, meeting records, and attendance lists for the two meetings are documented in Appendices A, B, and C.

In addition to this Coordination plan, the Commission also periodically prepares the long-range (25-30 years) transportation system plan for the seven-county southeastern Wisconsin Region and short-range (5 years) transit development plans for each of the Region's urban public bus systems. The year 2035 regional transportation system plan for southeastern Wisconsin, completed and adopted in 2006, is

intended to provide a vision for, and guide to, transportation system development in the Region into the future. The short-range transit service plans address current transit service issues and needs, and represent an initial stage of implementation of the recommendations of the regional transportation system plan. A countywide public transit service plan for Walworth County was last prepared by the Commission in 1982. Walworth County has not identified a need to update the 1982 plan since its completion. If the County were to request that the Commission staff prepare a new countywide transit development plan, the unmet transit service needs identified for the 2008 Walworth County Coordination Plan will be identified and verified in that plan

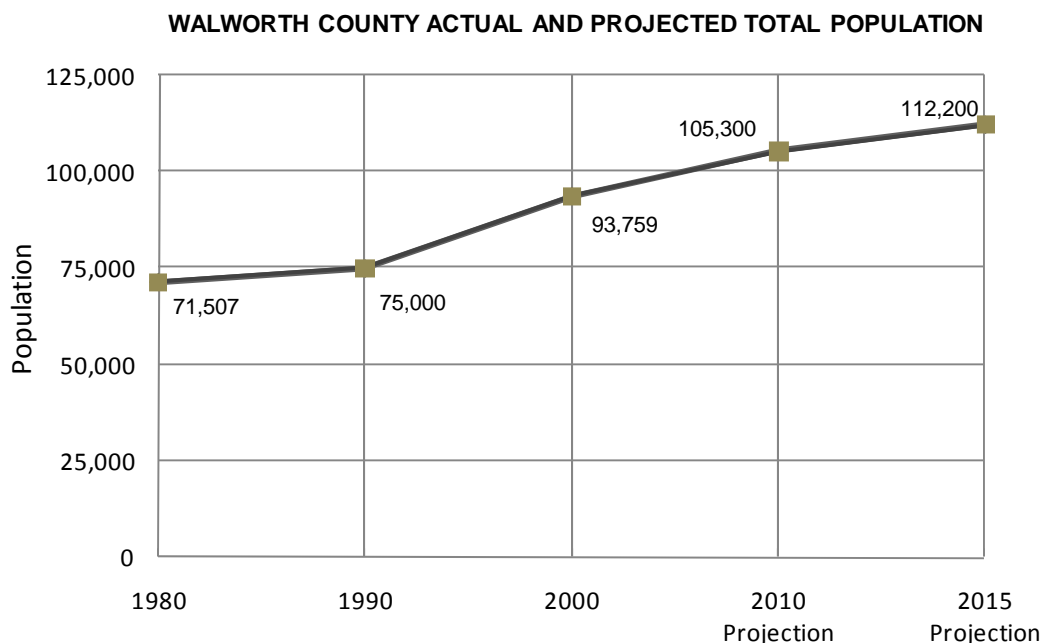
II. TRANSPORTATION NEEDS OF INDIVIDUALS WITH DISABILITIES, SENIORS, AND PEOPLE WITH LOW INCOMES

General Population Characteristics

Walworth County is located in southeastern Wisconsin, bordered by Rock County to the west, Jefferson and Waukesha Counties to the north, Kenosha and Racine Counties to the east, and the Illinois border along the south. Walworth County's population in 2007 was 100,600 persons, according to the U.S. Census Bureau. Of that total, the combined population of the Cities of Elkhorn, Delavan, Lake Geneva, and Whitewater made up 36,200 persons, or about 36 percent. A small concentration of population also exists in the Village of East Troy. Map 1 shows the population density in 2000 by U.S. Public Land Survey quarter-section.

Walworth County's population has grown rapidly since 1990. Between 1990 and 2000, the County's population grew by about 25 percent from approximately 75,000 to 93,800 persons, respectively. The rapid growth is expected to continue through 2015. As Figure 1 displays, the Walworth County population is projected to reach 112,200 by the year 2015.

Figure 1



Source: U.S. Census Bureau and SEWRPC

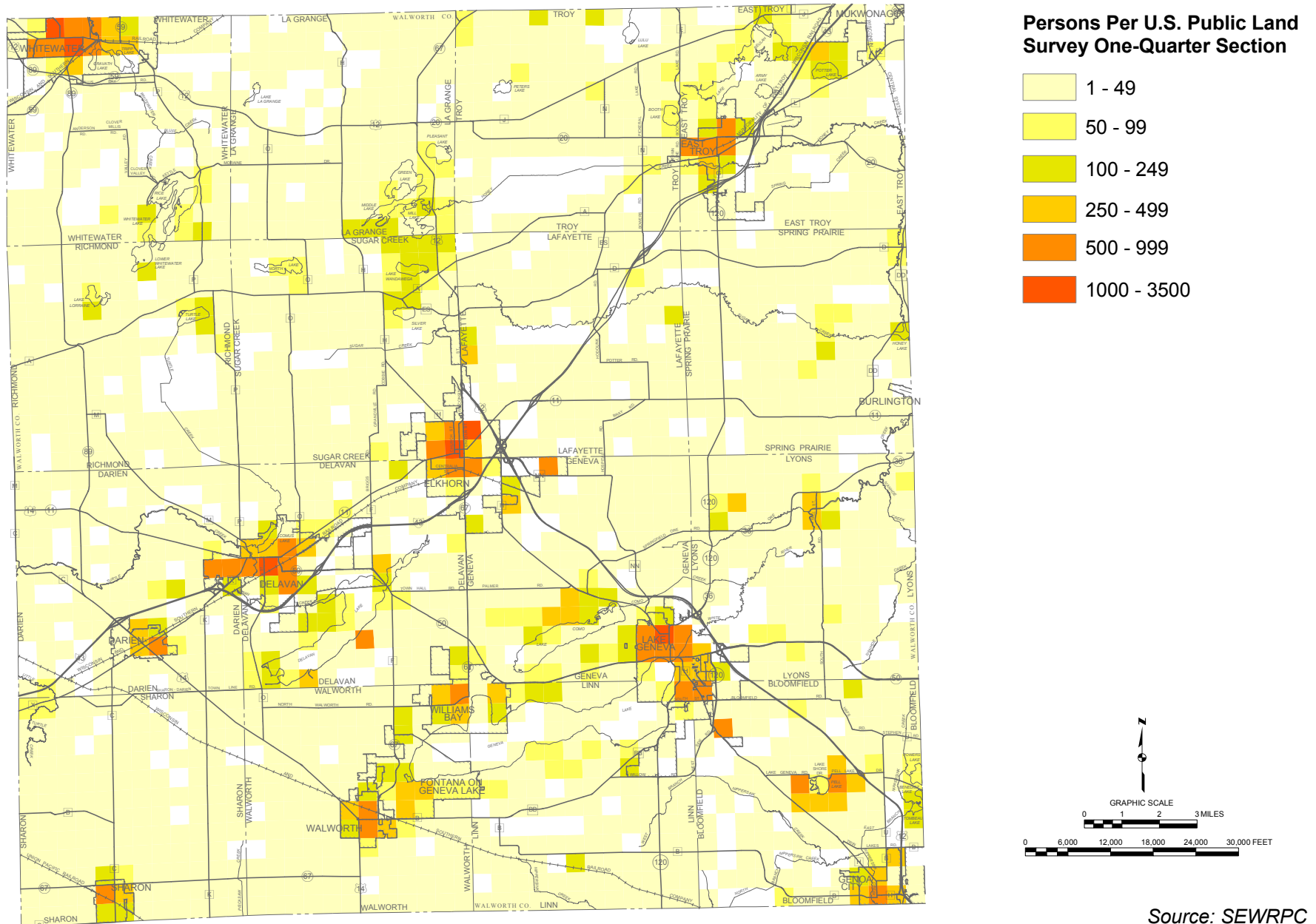
Transit-Dependent Population Characteristics

Certain segments of the population may be expected to have a greater dependence on, and make more extensive use of, public transit than the population as a whole because they have historically had more limited access to the automobile as a mode of travel than the population in general. Five such "transit-dependent" population groups were identified for this plan:

- School-age children (ages 10 through 16);
- Seniors (ages 65 and older);
- Persons in low-income households;
- Disabled individuals; and

Map 1

POPULATION DISTRIBUTION IN WALWORTH COUNTY: 2000



- Households with no vehicle available.

Table 1 displays the historic population of these groups in the study area in 1980, 1990, and 2000. The information in the table leads to the following observations:

- Persons in low-income households accounted for the largest share of the transit-dependent population in the County at about 21 percent of the total population. Disabled persons and households with no vehicle available accounted for the smallest portions of the total population or households in 2000 at about 5 percent each.
- Between 1990 and 2000, school-age children and persons with disabilities increased in both absolute numbers and in their share of the total population. Seniors and persons in low-income households have increased in absolute numbers but have dropped in their percent of total population. Zero-auto households have remained relatively stable in both absolute numbers and their percent of total households.

Table 1

TRENDS IN TRANSIT-DEPENDENT POPULATION GROUPS IN WALWORTH COUNTY

Transit-Dependent Population Group	1980		1990		2000	
	Number	% of Total Population/ Households	Number	% of Total Population/ Households	Number	% of Total Population/ Households
School-Age Children (ages 10 through 16)	8,606	12	6,790	9	9,609	10
Seniors (65 and older)	9,178	13	10,675	14	12,018	13
Persons in Low-Income Households ^a	17,783	25	19,316	26	19,957	21
Disabled Persons ^b	1,267	2	1,880	3	4,282	5
Households with No Vehicle Available	1,827	7	1,566	6	1,663	5
Total County Population	71,507	--	75,000	--	93,759	--
Total Number of Households	24,789	--	27,620	--	34,505	--

^aIncludes persons residing in households with a total family income less than 200 percent of the federal poverty level.

^bThe definition of "disabled persons" varied for the 1980, 1990, and 2000 Census. For the 1980 Census, disabled persons include those having a public transportation disability if they had a health condition which made it difficult or impossible for them to use buses, trains, subways, or other forms of public transportation. For the 1990 Census, disabled persons include those persons age 15 and older having a mobility limitation if they had a health condition which made it difficult to go outside the home alone for such activities as visiting the doctor's office. For the 2000 Census, disabled persons include those persons age 16 and older having a physical, mental, or emotional condition that made it difficult to go outside the home to shop or visit a doctor's office.

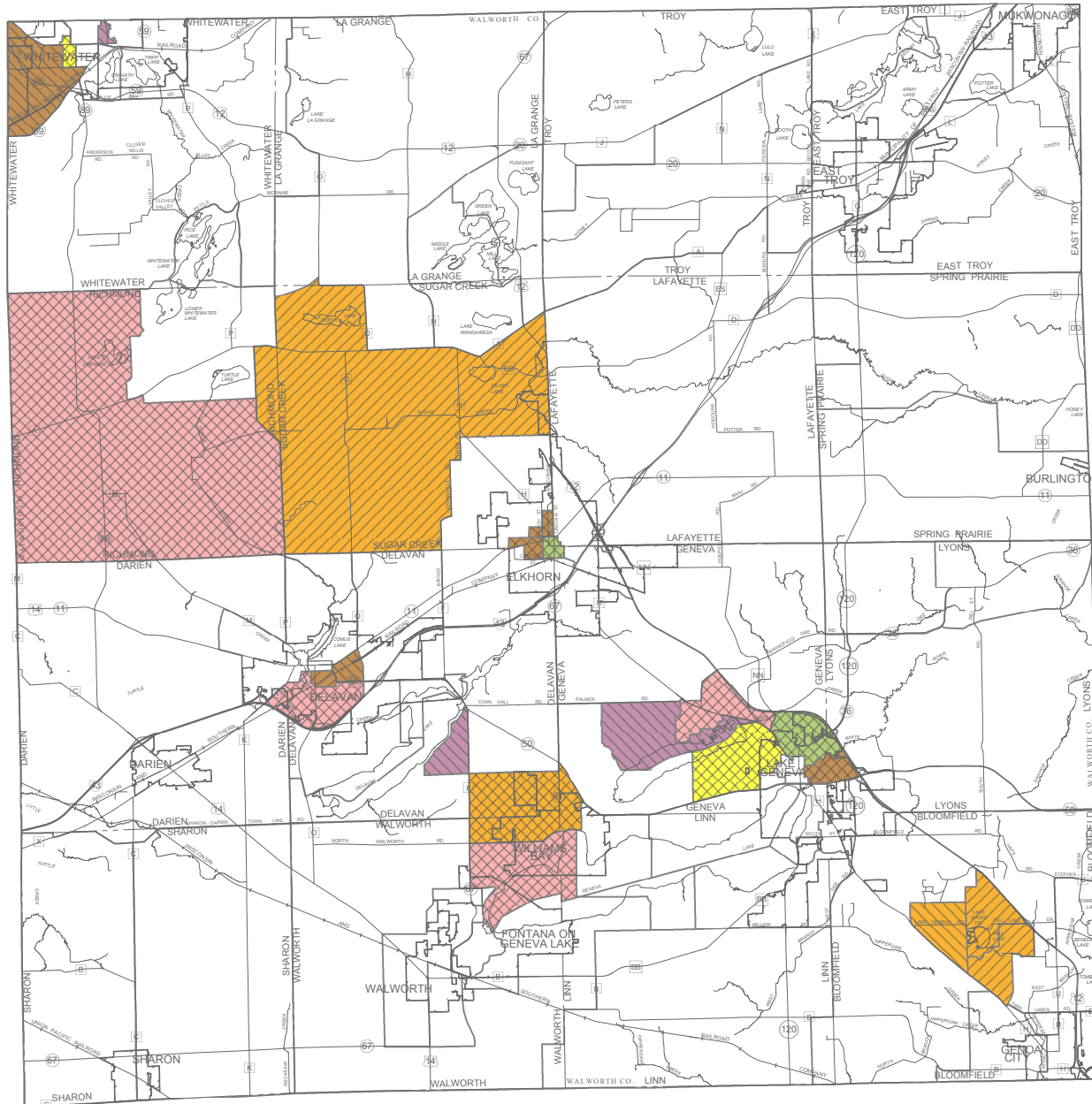
Source: U.S. Census Bureau and SEWRPC.

Data from the 2000 Census were used to identify areas in Walworth County where transit-dependent populations are concentrated. Map 2 displays Census block groups within the County with concentrations above the County averages for at least three of the five transit-dependent groups. These may be considered as potential priority areas for the provision of transit service.

In 2000, the residential concentrations of transit-dependent persons were found mostly within the Cities of Elkhorn, Delavan, Lake Geneva, and Whitewater. Transit-dependent population concentrations in the

Map 2

CENSUS BLOCK GROUPS WITH CONCENTRATIONS OF TRANSIT-DEPENDENT POPULATIONS IN WALWORTH COUNTY: 2000



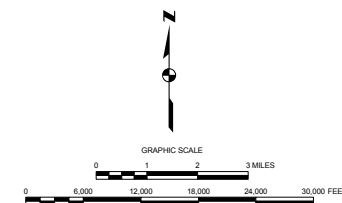
Five population groups may be expected to depend on public transit more than the general population. This map shows the 2000 Census block groups with concentrations above the County averages for at least three of the five transit-dependent groups:

Five Transit-Dependent Groups

- School-age children ages 10-16
- Households with no vehicle available
- Persons in low-income households
- Disabled individuals
- Seniors ages 65 and older

Combinations of the Five Transit-Dependent Groups

- School-age children ages 10-16 AND households with no vehicle available
- School-age children ages 10-16 AND persons in low-income households
- Households with no vehicle available AND persons in low-income households
- School-age children ages 10-16 AND households with no vehicle available AND persons in low-income households
- Disabled individuals AND seniors ages 65 and older



Source: SEWRPC

XR/xr/el/jb
10/10/08

I:\Tran\Work\Coord Human Svcs Plans\2008 planning documents\Maps\Population\Wal Co - Trans Depend Pops v3.mxd

rest of Walworth County were low, with the exception of some areas in and around the Village of Williams Bay and the Towns of Bloomfield, Richmond, and Sugar Creek.

Employment Characteristics

Map 3 displays employment density in 2000 by U. S. Public Land Survey quarter-section. The highest employment concentrations in the County are found in the Cities of Delavan, Elkhorn, Lake Geneva, and Whitewater. The Village of East Troy also has a concentration of employment.

Major Activity Centers

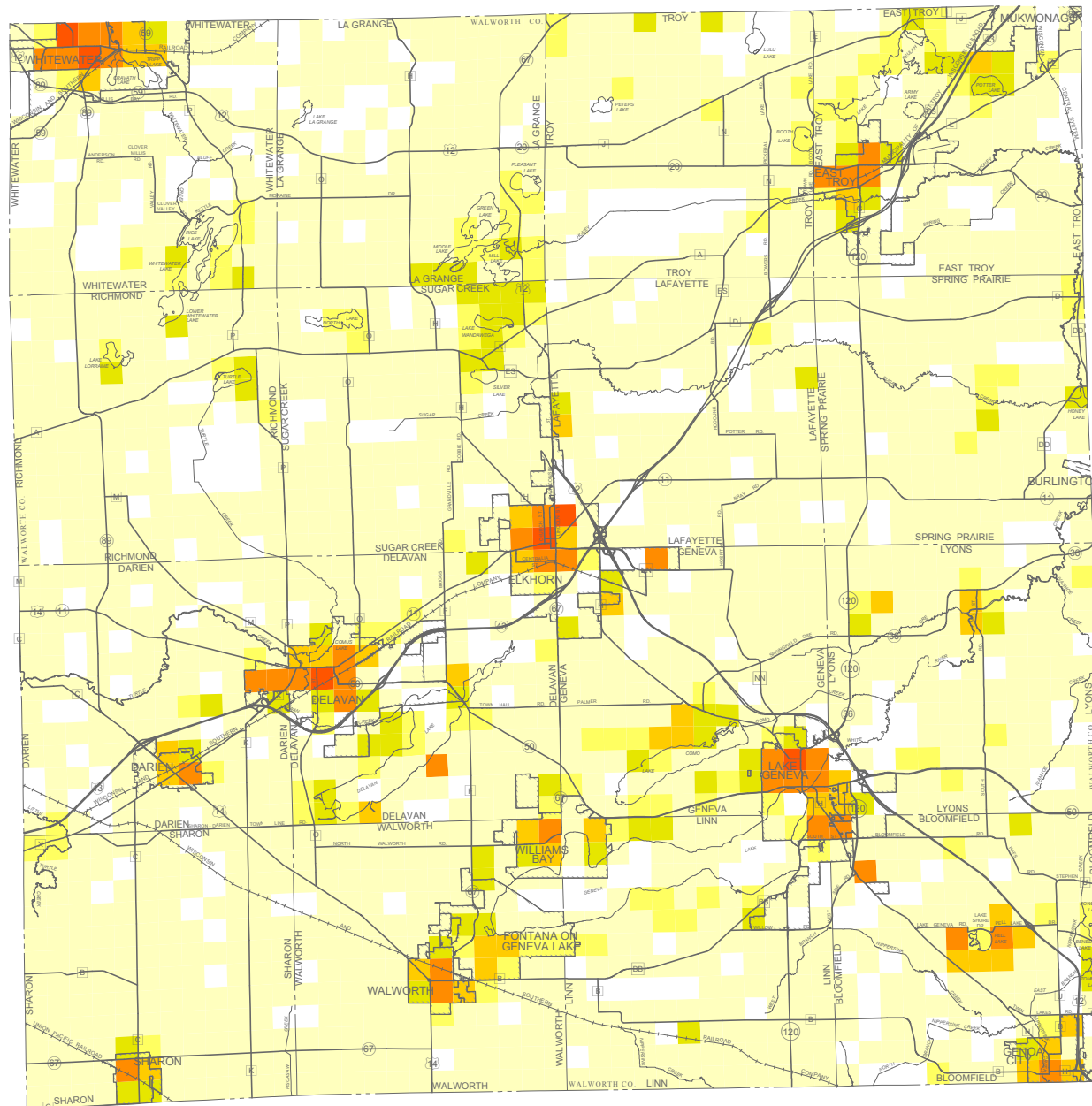
Transportation needs must also consider the local travel demand generated by major activity centers. Major activity centers can be land uses or facilities that currently attract, or have the potential to attract, significant total person or transit person trips. Seven types of major activity centers were considered for this Coordination Plan:

- Job Resource Centers
- Major Employers with 100 or more employees
- Major Hospitals, Medical Centers, or Clinics with 10 or more physicians
- Major Institutions of Higher Education
- Residential Facilities for Seniors, People with Disabilities, and Low-Income Families
- Senior Centers and Senior Meal Sites
- Major Commercial Areas

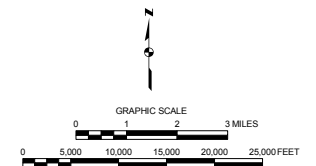
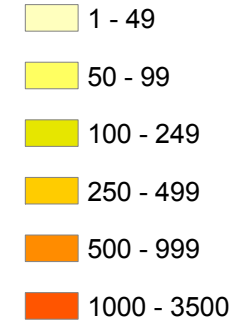
Map 4 shows their locations. Most of these activity centers are found in the Cities of Elkhorn, Delavan, Lake Geneva, and Whitewater. A small number are also located in the Villages of Darien, East Troy, and Walworth.

Map 3

EMPLOYMENT DENSITY BY U.S. PUBLIC LAND SURVEY QUARTER-SECTION IN WALWORTH COUNTY: 2000



Jobs Per U.S. Public Land Survey One-Quarter Section



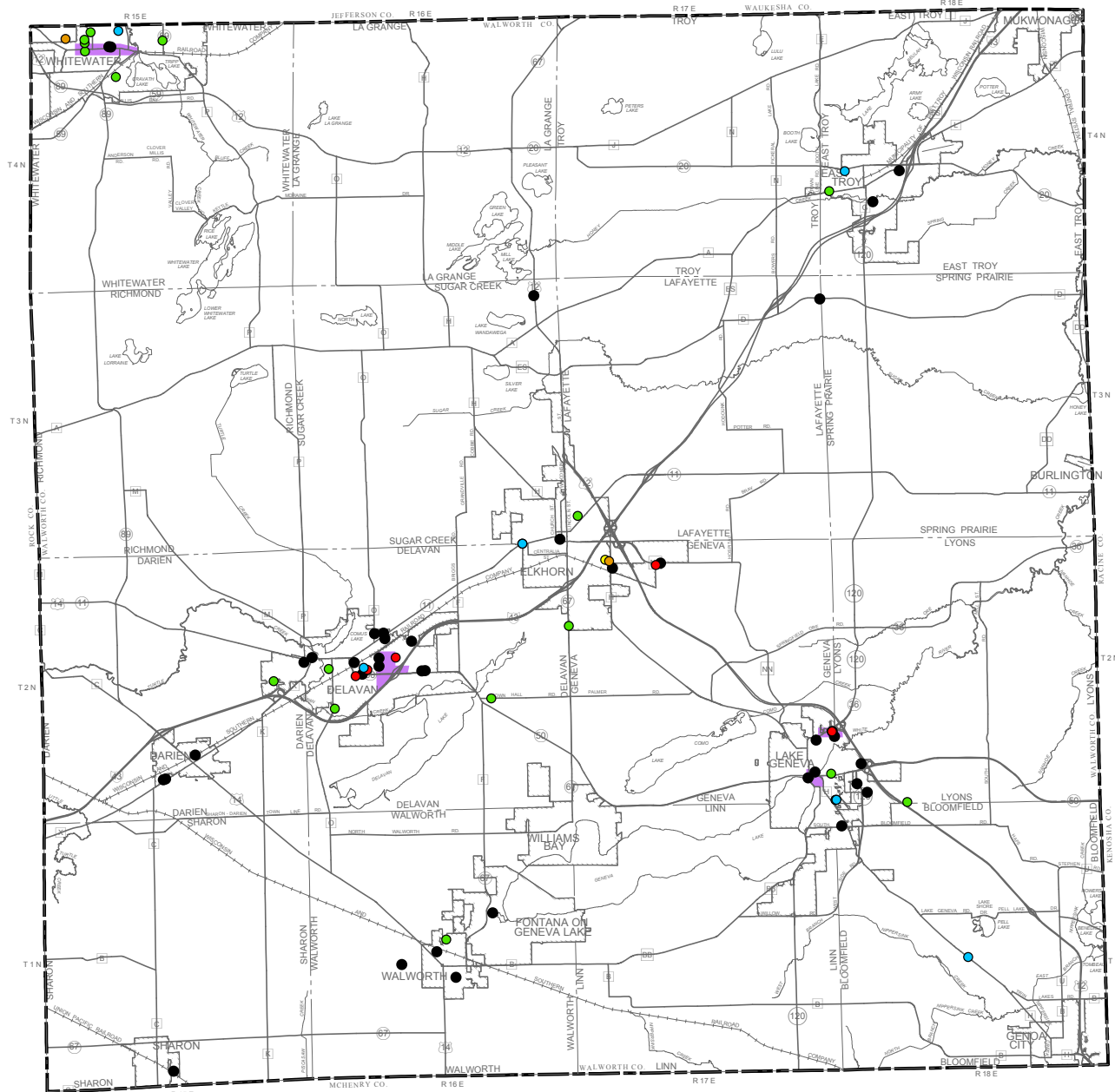
Source: SEWRPC

SD/sd/jb
07/28/08

I:\Tran\WORK\Coord Human Svcs Plans\2008 planning documents\Maps\Employment\Wal Co - Emp Density.mxd

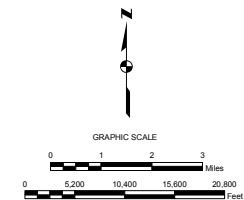
Map 4

MAJOR ACTIVITY CENTERS IN WALWORTH COUNTY: 2008



Major Activity Centers

- Job Resource Centers
- Major Employers with more than 100 employees
- Major Hospitals, Medical Centers, or Clinics
- Major Institutions of Higher Education
- Residential Facilities for Seniors, People with Disabilities, and Low-Income Households
- Senior Centers and Senior Meal Sites
- Major Commercial Areas



Source: SEWRPC

SD/sd/jb
10/10/08

III. CURRENT TRANSPORTATION SERVICES

Table 2 lists the major transportation providers currently serving Walworth County, and identifies the type of service they provide, their service area, their hours of operation, and their funding sources in addition to passenger fares. The table lists the services that are available to the general public along with services that are primarily aimed at serving special population groups, or “human services transportation”.

Transportation Services for the General Public

The principal transportation services for the general public provided in Walworth County are displayed on Map 5 and include:

- Whitewater Shared-Ride Taxi (operated by Brown’s Cab Company under contract with the City of Whitewater) is a publicly-funded taxicab service that provides transportation in the City of Whitewater and environs.
- Western Kenosha County Transit (operated by the Kenosha Achievement Center under contract with Kenosha County) started service in September 2007. It is a publicly-funded rural fixed-route service operating between small communities in western Kenosha County, the City of Kenosha, and the Cities of Lake Geneva in Walworth County and the Village of Antioch in northern Illinois.
- Lake Geneva Senior Cab (a publicly-operated taxi service) and A-1 Limousine and Taxi (a private-for-profit taxi service) are the only other major transportation providers available to the general public.

Human Services Transportation

Other transportation services in the County are primarily aimed at serving the human services transportation needs of special population groups, including the elderly, the disabled, low-income persons, or veterans and include:

- Walworth County Department of Health and Human Services provides door-to-door transportation for Walworth County residents who are elderly, disabled, receiving Medical Assistance, or who are clients of the Department of Health and Human Services or Veterans Services. The program offers a regular shuttle that serves trips for any purpose within Walworth County, and an out-of-county service that serves medical trips within a radius of up to 70 miles of the City of Elkhorn.
- VIP Services, Inc. provides door-to-door service for participants in their programs for persons with physical or cognitive disabilities.
- The remaining transportation services operated within the County are mostly private-for-profit services focusing on providing transportation for medical appointments within Walworth County and to surrounding counties.

Table 2

INVENTORY OF TRANSPORTATION PROVIDERS IN WALWORTH COUNTY: 2008

Name of Service Provider Contact, Phone	Type of Provider	Type of Service	Service Area	Eligible Users	Days and Hours of Operation	Fares per Trip	Vehicles Used	Funding Sources In Addition to Fares
Walworth County Department of Health and Human Services (DHHS)								
Regular Shuttle (262) 741-3282	Public	Advance reservation, door-to-door	Walworth County	Elderly & disabled individuals; Title 19 Medical Assistance patients; clients of DHHS and Veterans Services	Weekdays: 7:00 a.m. - 4:00 p.m.	\$3.00 – Shopping & nutrition trips \$4.00 – Medical trips within municipality \$6.00 – Medical trips in Walworth County outside municipality	2 sedans 1 minivan 1 14-passenger van 2 7-passenger accessible vans 3 8-passenger accessible vans	\$85.21 State Specialized Transportation Assistance Program for Counties Veterans Affairs Title 19 Medical Assistance Walworth County
Out-of-County Medical Appointments (262) 741-3282	Public	Advance reservation, door-to-door	Out-of-county trips within a 70-mile radius of City of Elkhorn		Weekdays: 7:00 a.m. - 4:00 p.m.	\$30.00 to \$50.00 round trip	Volunteers provide their own vehicles.	
Whitewater Shared-Ride Taxi Service (920) 563-6303	Public	Demand-responsive taxi	City of Whitewater and portions of adjacent communities	General public	Weekdays: 7:00 a.m. - 6:00 p.m. Saturdays: 7:00 a.m. - 11:00 p.m. Sundays 7:00 a.m. - 4:00 p.m.	\$3.00 – Adults \$2.00 – Students \$2.00 – Elderly \$2.00 – Disabled \$0.10 per minute – Waiting Time \$1.50 per mile – Travel Outside City	3 5-passenger sedans	\$5311 Federal Nonurbanized Area Program \$85.20 State Urban Mass Transit Operating Assistance Program City of Whitewater
Western Kenosha County Transit (888) 203-3498	Public	Fixed route	Service between the Cities of Twin Lakes, Kenosha, Paddock, Antioch, and Lake Geneva	General Public	Weekdays: 8:00 a.m. to 5:00 p.m.	\$2.00 – Adults Children age 12 and under ride free with fare-paying adult	Accessible vans and small buses	Federal \$5314 Kenosha County Wisconsin Department of Transportation

Table 2 (Continued)

Name of Service Provider Contact, Phone	Type of Provider	Type of Service	Service Area	Eligible Users	Days and Hours of Operation	Fares per Trip	Vehicles Used	Funding Sources In Addition to Fares
A-1 Limousine & Taxi (262) 248-2619	Private, for-profit	Advance reservation taxi service	Primarily Lake Geneva and Walworth County	General public	24 hours a day, 7 days a week	Distance-based.	Non-accessible taxis and limousines	- -
Cab Care Transportation (262) 728-0490	Private, for-profit	Advance reservation, door-to-door	Elkhorn, Lake Geneva, and Delavan	Must be in a wheelchair	Weekdays: 8:00 a.m. - 5:00 p.m. Saturdays: As needed Sundays: As needed	Private pay	3 accessible vans	- -
Cardinal Transport Services (262)245-0675	Private, for-profit	Advance reservation, door-to-door	Long distance trips to/from Lake Geneva area	Ambulatory individuals	24 hours a day, 7 days a week	Private pay	1 sedan 1 minivan	- -
DRS Medical Transport (262) 728-9759	Private, non-profit	Advance reservation, door-through-door	Primarily Walworth, Racine and Kenosha Counties.	General public	Weekdays: 8:00 a.m. - 3:00 p.m. Saturdays: As needed	Title 19 Medicaid reimbursement or private pay: \$22.00 base rate and \$2.00 per mile	3 5-passenger accessible vans	Title 19 Medical Assistance Private Donations
Inspiration Ministries (262) 275-6131	Private, non-profit	Scheduled door-to-door for adult day care, shopping events and medical activities	Walworth County	Residents of Inspiration Ministries community	As needed	No charge	4 accessible vans	- -
Lake Geneva Senior Cab (262) 949-8294	Public	Taxi service	Primarily Walworth County, with occasional trips to Milwaukee and Chicago	General public	24 hours a day, 7 days a week	\$5.00 pick up fee per person and \$2.00 per mile	1 15-passenger van 3 regular minivans	- -

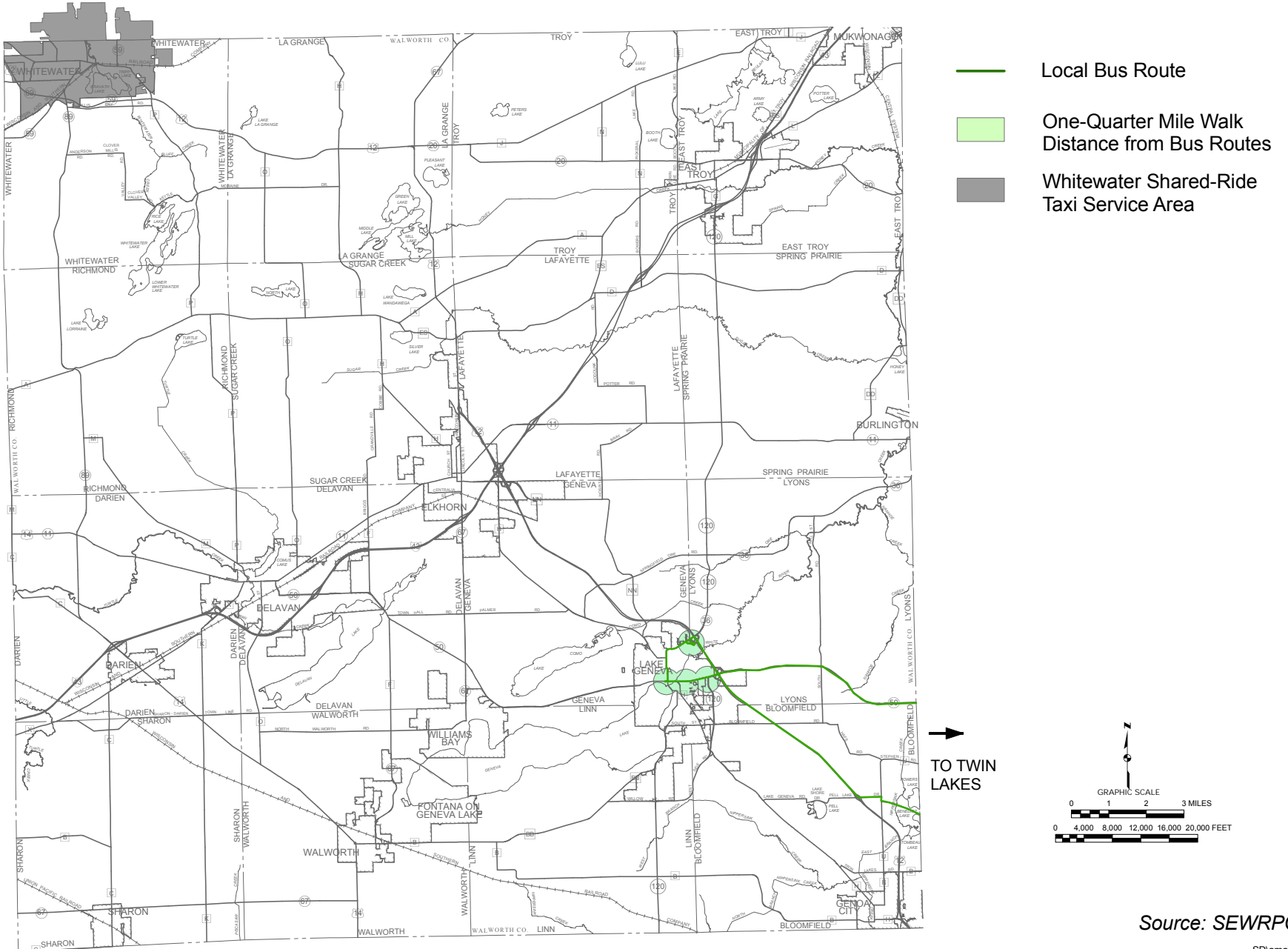
Table 2 (Continued)

Name of Service Provider Contact, Phone	Type of Provider	Type of Service	Service Area	Eligible Users	Days and Hours of Operation	Fares per Trip	Vehicles Used	Funding Sources In Addition to Fares
Medix Wheelchair Service (800) 236-1077	Private, for-profit	Advance reservation, door-to-door	Walworth, Kenosha, Racine, and other long distance destinations	General public	Weekdays: 6:00 a.m. – 6:00 p.m.	Private pay: \$31.00 for first 5 miles (\$26.00 if paid at time of service), then \$3.00 per mile one-way	Accessible vans	- -
ParaTech Ambulance 800-421-2234	Private, for-profit	Advance reservation, door-to-door for medical activities	Walworth County and surrounding counties	General public for medical appointments only	24 hours a day, 7 days a week	Title 19 Medicaid reimbursement or private pay	Accessible vehicles	- -
Trans Star Medical (800) 972-8080	Private, for-profit	Advance reservation, door-to-door for medical activities	From Walworth County to surrounding Counties	General public for medical appointments only	Weekdays: 5:00 a.m. - 5:00 p.m. Saturdays: 5:00 a.m. - 3:00 p.m.	Title 19 Medicaid reimbursement or private pay \$25.00 base rate and \$2.50 per mile	23 Accessible vans	Title 19 Medical Assistance
VIP Services, Inc. (262) 723-4043	Private, non-profit	Advance reservation, door-to-door	Walworth County	Participants in VIP Services programs	Weekdays 6:00 a.m. - 5:00 p.m. Saturdays: As needed Sundays: As needed	- -	2 8-passenger accessible vans 2 14-passenger accessible vans 1 16-passenger bus 5 26-passenger buses 2 30-passenger buses	\$5310 Federal Elderly & Persons with Disabilities Program Title 19 Medical Assistance

Source: SEWRPC.

Map 5

PUBLIC TRANSPORTATION SERVICE AREA IN WALWORTH COUNTY: 2008



Source: SEWRPC

SDIamajb
10/08/08

I:\Tran\Work\Coord Human Svcs Plans\2008 planning documents\Maps\Transit Service Area\Wal Co - Trans Service.mxd

IV. ASSESSMENT OF TRANSPORTATION SERVICES AND IDENTIFICATION OF UNMET TRANSPORTATION NEEDS

Although some transportation needs can be understood by examining how current transportation providers meet the needs identified in Census data, maps, and other sources of demographic data, many of the needs can only be understood through direct dialogue and communication from agencies and individuals that provide or rely on transportation services. A wide range of individuals and agencies with an interest in transportation in the County were invited to participate in two meetings to assist in the development of the Coordination Plan (see Appendices A, B, and C). At the first meeting, Commission staff discussed the maps and data presented in the first three sections of this Coordination Plan. The attendees from Walworth County then formed a small group and went through an evaluation exercise in which they assessed:

- **Within** Walworth County, how well current transportation services meet residents' needs, based on: area served; days and hours of operation; fares; eligibility requirements for the service; vehicle accessibility for wheelchairs; customer service; reservation wait time; and ease of finding information on services; and
- **Between** Walworth County and other counties, how well current transportation services meet residents' needs, based on: area served; days and hours of operation; fares; eligibility requirements for the service; vehicle accessibility for wheelchairs; customer service; reservation wait time; and ease of finding information on services.

A summary of the key findings of the small group assessment and the identification of unmet transportation needs appears below.

Unmet Needs for Walworth County

- Lack of affordable transportation for work, social-recreational, and shopping trips for all residents.
- Very limited public transportation options are available for travel between Walworth County and the surrounding counties, including adjacent counties in Illinois.
- Lack of transportation for medical appointments, both within and outside the County, especially for short-term care and for disabled persons.
- Lack of coordination in the distribution of transportation service information. There is no directory or contact person that has comprehensive information on all transportation options.
- Need for expanding the existing transportation options. Also, related need for public and/or private funding to support the expanded services.
- Lack of evening, night, and weekend transportation service options. Most operators stop providing service before 6:00 p.m. on weekdays, and many do not provide any service on weekends.
- Need for expanding the area served by taxicab providers. The taxi services available to the general public focus on serving demand in the Lake Geneva, Delavan, Elkhorn, and Whitewater areas with very little or no service provided in the other portions of the County.

- Lack of wheelchair-accessible taxi vehicles.
- Need more affordable fares for the existing and potential new taxi services. Many people who need to use the taxi services are unable to afford the current fares.
- Need to expand the capacity of the County Department of Health and Human Services transportation program. Users of the County program must schedule trips many days in advance of when service is needed.

V. STRATEGIES TO ADDRESS UNMET NEEDS

This Coordination Plan presents two types of strategies for Walworth County to consider in addressing the identified transportation needs in the County. The first group is a list of Federal and State funding programs that provide financial support for public transportation services. The second group includes strategies that were identified by participants in the second meeting for the development of the Coordination Plan.

Financial Strategies: Federal and State Funding Programs

Descriptions of the Federal and State programs that provide financial assistance for public transportation services and which could be used in Walworth County are illustrated in Tables 3 and 4.

Table 3

FEDERAL TRANSIT ADMINISTRATION FUNDING PROGRAMS ADMINISTERED BY THE WISCONSIN DEPARTMENT OF TRANSPORTATION WHICH COULD BE USED IN WALWORTH COUNTY

Program	Type	Target rider	Eligible Applicants	Local Share (approx.)	Funding Level (approx.)	Application Cycle	Notes
Section 5307	Primarily operating	Public in urbanized areas (>50,000)	Local public bodies	50% of project deficit	\$42 million	Annual (application released in early fall)	Combined with State aid (s. 85.20) to cover up to 60% of operating expenses in small urbanized areas
Section 5309	Capital	Public	Local public bodies with Urban Public Transit Systems	20% of total costs	\$5 million	5309 capital requests are a component of annual application for state aid	Funding depends on annual Congressional Earmark
Section 5310	Capital	Elderly & Disabled	Primarily non-profits, but can be local public bodies, if non-profit is not readily available	20% of total costs	\$2 million	Biennial (application released in fall)	Combined with State funds (s.85.22)
Section 5311	Operating & Capital	Public in areas <50,000 in population	Local public bodies	<u>Operating</u> – 50% of project deficit <u>Capital</u> - 20% of total costs	\$11.8 million	Annual (application released in early fall)	Combined with State aid (s. 85.20), to cover up to 66% of operating expenses in non-urbanized areas
Section 5314 (STRAP)	Operating & Planning	Public in areas <50,000 in population	Local public bodies	20% of project deficit	\$2 million	Annual (application released in early fall)	Focus is on new or expanded services for rural areas
Section 5316 (JARC)	Operating & Capital	Low-income workers & reverse commuters	Local public bodies, non-profits, metropolitan planning organizations	<u>Operating</u> – 50% of project deficit <u>Capital</u> - 25% of total costs	\$1.2 million ^a	Annual (WETAP application released in early fall)	Combined with State funds (TEAM, ETA) under the WETAP program, which reduces the local share to 25% of operating project costs.
Section 5317 (New Freedom)	Operating & Capital	Individuals with Disabilities	Local public bodies, non-profits, and private operators of public transit services.	50% of project deficit	\$0.8 million ^a	Annual (application released in early fall)	Combined with State Division of Vocational Rehabilitation Funds to lower local share of rural projects

^a Only includes funding available to WisDOT for small urban and rural areas

Source: Wisconsin Department of Transportation and SEWRPC.

Table 4

**STATE OF WISCONSIN FUNDING PROGRAMS ADMINISTERED
BY THE WISCONSIN DEPARTMENT OF TRANSPORTATION**

Program	Type	Target rider	Eligible Applicants	Local Share (approx.)	Statewide Funding Level (approx.)	Application Cycle	Notes
s.85.20	Operating	Public in areas with at least 2,500 in population	Local public bodies	Rural 35% of total cost Urban 42% of total cost	\$102.6 million	Annual (application released in early fall)	Combined with Federal transit operating assistance funds (5311 & 5307)
s.85.21	Operating & Capital	Elderly & Disabled	Counties	20% of project costs	\$12.3 million	Annual (application released in fall)	Can be used as match for Federal programs
s.85.22	Capital	Elderly & Disabled	Primarily non-profits, but can be local public bodies	20% of total costs	\$0.9 million	Biennial (application released in fall)	Blended with Federal Section 5310 funds
TEAM (Trans. Employment and Mobility)	Operating & Capital	Low-income workers	Local public bodies, non-profits, metropolitan planning organizations	25% of project costs under WETAP	\$0.3 million	Annual (WETAP application released in early fall)	Combined with ETA (State) and JARC (Federal) under the WETAP program
ETA (Employment Transit Aids)	Operating & Capital	Low-income workers	Local public bodies, non-profits, metropolitan planning organizations	25% of project costs under WETAP	\$0.5 million	Annual (WETAP application released in early fall)	Combined with TEAM (State) and JARC (Federal) under the WETAP program

Source: Wisconsin Department of Transportation and SEWRPC.

More information on Federal and State funding programs can be found at WisDOT's website (<http://www.dot.wisconsin.gov/localgov/transit/index.htm>). In addition to the Federal and State programs shown in Tables 3 and 4, which are aimed primarily at providing transportation services, various human-service funding programs and block grant programs can be used for transportation services.

Prioritized Strategies to Address Unmet Needs

Attendees of the second Coordination Planning meeting were asked to consider strategies to address the unmet needs that they had already identified. Commission staff gave a presentation that illustrated many potential strategies to improve transportation service. All of the attendees who work or provide service in Walworth County then met as a group to discuss potential strategies for meeting unmet needs. They developed a list of strategies that they believed were appropriate for Walworth County, and then prioritized those strategies based on their ability to address the previously determined unmet needs and gaps in service. The prioritized strategies are listed below:

Strategies for Addressing Unmet Transportation Needs Identified for Walworth County Residents

1. Consolidate and share transportation resources among transportation providers. For example, the Walworth County Department of Health and Human Services could coordinate with VIP Services, Inc. to share vehicles, maintenance services, and operating or support services.
2. Provide funding for a mobility manager position for Walworth County whose duties could include, but are not limited to:
 - a. Assisting in coordinating transportation services.
 - b. Promoting the availability of transportation services.

- c. Gathering and analyzing data to evaluate intermodal transportation options for seniors, disabled persons, and low-income individuals.
 - d. Developing strategies to obtain funding for projects that would improve or increase the transportation services available in the County.
- 3. Improve the convenience of using transportation services within Walworth County and between Walworth County and adjacent counties. For example, the Walworth County Department of Health and Human Services and the Whitewater Shared-Ride Taxi could expand the days and hours of their transportation services.
- 4. Establish or expand public shared-ride taxi services to provide demand-responsive transit service, especially in the more rural areas of the County. One model could be the Shared-Fare Taxi Program sponsored by the Waukesha County Aging and Disability Resource Center.
- 5. Purchase new vehicles to accommodate the demand for transportation services and maintain or improve the level of service offered.
- 6. Establish automobile purchase and repair programs directed at low-income workers who cannot use public transportation to get to jobs. One model would be the Keys to Work Auto Loan Program sponsored by Waukesha-Ozaukee-Washington Workforce Development.
- 7. Improve access to information on the available transportation services. Some ways to improve the dissemination of information include:
 - a. Create an online directory of transportation providers that include the type of service, eligible users, the days and hours of operation, the fares charged, and trip reservation requirements.
 - b. Create a clearinghouse or centralized information source for information on all transit services. Examples would include 211 community information and 511 traveler information.

VI. PLAN IMPLEMENTATION

Attendees of the second Coordination Planning meeting were also asked to consider who would be responsible for implementing each of the identified strategies. Some of the potential responsible parties identified by participants from the agencies and organizations in Walworth are listed below.

Walworth County

- Consolidate and share transportation resources.
- Improve the convenience of transportation services: the County would be responsible for implementing any service improvements to the Department of Health and Human Services transportation program.
- Establish a countywide subsidized public shared-ride taxi service, or facilitate the establishment of shared-ride taxi services in municipalities within the County.
- Establish automobile loan and repair programs for low-income workers.

Mobility Manager

- Assist in coordinating transportation services.
- Develop and provide information on the availability of transportation services.
- Gather and analyze data to evaluate intermodal transportation options for seniors, disabled, and low-income individuals.
- Develop strategies to obtain funding for transportation projects.

All Transportation Providers

- Consolidate and share transportation resources.
- Purchase new vehicles to maintain or improve transportation services.
- Improve access to information on the transportation services provided.

APPENDICES

(This page intentionally left blank)

Appendix A

LIST OF INDIVIDUALS AND AGENCIES INVITED TO ATTEND THE 2008 MEETINGS FOR COORDINATION PLANNING IN KENOSHA, RACINE, AND WALWORTH COUNTIES

First Name	Last Name	Title	Organization	City
Samantha	Kerkman	State Representative	66th Assembly District	Powers Lake
			A-1 Lake Geneva Limousine & Luxury Taxi	Williams Bay
Wendy	Betley	Regional Services Coordinator	Alzheimer's Association	East Troy
			Amer-A-Care Transport Inc	Milwaukee
Patti	O'Brien		American Red Cross	Whitewater
Jeff	Seider		American Red Cross	Kenosha
			American Red Cross	Racine
Susanne	Malestic	Senior Resource Coordinator	Aurora Burlington Clinic	Burlington
Peggy	Woehrer	Quality and Risk Management Nurse	Aurora Burlington Clinic	Burlington
Patti	Pagel	Senior Care Project Coordinator	Aurora Health Center	Lake Geneva
Jennifer	Johnson		Aurora Lakeland Medical Center	Elkhorn
Chris	Olson	Administrator/Chief Nurse Executive	Aurora Medical Center	Kenosha
Jeffery	Bella	Owner	Bella Transportation	Kenosha
Curtis	Garner	Executive Director	Belle Urban System/Professional Transit Management	Racine
Michelle	Sylvester	Paratransit Coordinator	Belle Urban System/Professional Transit Management	Racine
Sandra	Hardt	Director	Brookside Care Center	Kenosha
			Brown's Cab Service	Fort Atkinson
Louise	Bucko	Owner	Bucko Ambulatory Transit	Kenosha
Janet	Ludtke	Executive Director	Burlington Chamber of Commerce	Burlington
			Cardinal Transport Service, Inc	Williams Bay
MaryBeth	Popchok		Careers Industries, Inc.	Racine
Susan	Wesner		Careers Industries, Inc.	Racine
Robert	Miller	Mayor	City of Burlington	Burlington
Tom	Vos	City Council President	City of Burlington	Burlington
Keith	Bosman	Mayor	City of Kenosha	Kenosha
Benjamin	Hughes	City Administrator	City of Racine	Racine
Gary	Becker	Mayor	City of Racine	Racine
Kathy	Kasper	Transit Planner	City of Racine Department of Transportation	Racine
Doug	Saubert		City of Whitewater Taxi Service	Whitewater
Kim	Egan	Social Services	Claridge House	Kenosha
Cheryl	Roberts	Director of Nursing	Claridge House	Kenosha
Naomi	Trocinski	Owner	CMB Taxi LLC	Kenosha
Jan	Conti	Network Developer	Community Care Inc	Milwaukee
Joann	Kuehl	Supervisor	Community Care Inc	Kenosha
Daniel	Haney		Community Care Inc.	Milwaukee

First Name	Last Name	Title	Organization	City
Perry	Mueller		Community Care Inc.	Racine
Kathryn	Vite-Hazelton		Community Care Inc.	Racine
Joyce	Wilde		Congregations United to Save Humanity	Kenosha
Jim	Baker	Owner	Curtis Ambulance Service	Burlington
Kimberly	Efinger	Coordinator	Day Break Program	Bristol
Michelle	Rivers	Coordinator	Day Break Program	Bristol
Diana	Mengo	Coordinator	Day Break Program - Bristol	Bristol
Sheldon D.	Rock		Delavan Taxi Services	Delavan
Kris	Fell		Developmental Disabilities Information Service	Racine
Elisabeth	Watson	Director	Disabled Student Services	Whitewater
Patricia	Johnson	WDA Director	Division of Vocational Rehabilitation	Racine
Tami	Jandrowski		Division Of Vocational Rehabilitation	Kenosha
Carol	Schaufel-Romero		Division Of Vocational Rehabilitation	Kenosha
Julie	Wilke		Division Of Vocational Rehabilitation	Kenosha
John	Kramer	Chief	DRS Medical Transport	Delavan
Sylvia	Rutledge		Exact Transport LLC	Milwaukee
			Express Taxi & Limousine Service LLC	Elkhorn
Pamela	Barker-Higgenbottom		First Transit, Inc	Racine
Marty	Garb		First Transit, Inc	Racine
Bobby	Dyson		Fulfilling A Need	Kenosha
Bryan	Albrecht	President	Gateway Technical College	Kenosha
John	Saladis	Plant Manager	Goodwill Industries	Racine
Colleen	Sandt	Administrator	Grande Prairie Health and Rehabilitation Center	Pleasant Prairie
Carol	Knight	Executive Director	Greater Union Grove Area Chamber of Commerce	Union Grove
Luann	Simpson		Human Services Board	Racine
Ken	Sathern	LTSPC Chairperson	Inspiration Ministries	Walworth
Sally	Pieske		K & S Medical Transport Inc	Sturtevant
Janet	Sullivan		K & S Medical Transport Inc	Racine
Val	Abrahamson		Kenosha Achievement Center Inc	Kenosha
Roger	Lincoln		Kenosha Achievement Center Inc	Kenosha
Paula	Williams	Executive Director	Kenosha Achievement Center Inc	Kenosha
Gary	Brown	Executive Director	Kenosha Area Family and Aging Services Inc	Kenosha
Barbara	Tenuta	Volunteer Escort Service	Kenosha Area Family and Aging Services Inc	Kenosha
Lauren	Zeilsdorf	Director Of Meals On Wheels	Kenosha Area Family and Aging Services Inc	Kenosha
Stephanie	Phillips	Transportation Coordinator	Kenosha Area Transit	Kenosha
Len	Brandrup	Director of Transportation	Kenosha Area Transit System	Kenosha
Kimberly	Breunig	County Board Supervisor	Kenosha County	Trevor
Fred	Ekornaas	County Board Supervisor	Kenosha County	Bristol
Dennis	Elverman	County Board Supervisor	Kenosha County	Twin Lakes
Bob	Haas	County Board Supervisor	Kenosha County	Burlington

First Name	Last Name	Title	Organization	City
Roger	Johnson	County Board Supervisor	Kenosha County	Silver Lake
Mark	Molinaro	County Board Supervisor	Kenosha County	Kenosha
Brian	Morton	County Board Supervisor	Kenosha County	Kenosha
Gordon	West	County Board Supervisor	Kenosha County	Salem
Marbeth	Knoff		Kenosha County ARC	Kenosha
Judy	Willoughby		Kenosha County ARC	Kenosha
Jim	Truchan		Kenosha County Department of Disability Services	Kenosha
John	Jansen	Director	Kenosha County Department Of Human Services	Kenosha
Adelene	Greene		Kenosha County Department of Workforce Development	Kenosha
Carolyn	Feldt	Assistant Director	Kenosha County Division of Aging and Disability Services	Kenosha
Michelle	Grosso	Disability Benefit Specialist	Kenosha County Division of Aging and Disability Services	Kenosha
LaVerne	Jaros	Director	Kenosha County Division of Aging and Disability Services	Kenosha
Annette	Krause		Kenosha County Division of Aging and Disability Services	Kenosha
Martha	McVey	Program Manager	Kenosha County Division of Aging and Disability Services	Kenosha
Laura	Eltringham	Mobility Manager	Kenosha County Job Center	Kenosha
John	Milisaukas		Kenosha County Job Center	Kenosha
Bill	Erickson	Transportation Coordinator	Kenosha County Workforce Development	Kenosha
Patricia	Falduto-Miethke	Director	Kenosha Senior Citizens Center	Kenosha
Lynda	Orsburn	Owner	Ktown Transportation	Kenosha
Vicki	Gorden	Social Work Supervisor	Lakeland Health Care Center	Elkhorn
Carol	Wilke	Acting Director	Lakeview RecPlex	Pleasant Prairie
Dave	Martin		Leadership Racine/QPS Companies	Racine
Ruth	Stauersbol	Adult Day Services Leader	Lincoln Lutheran Adult Day Services	Racine
			LJH Ambulance	Kenosha
Bill	Schoessling	Executive Director	Love, Inc.	Burlington
Mike	Schmidt	Manager	Medix	Burlington
Debby	Ganaway	Executive Director	National Alliance on Mental Illness--Racine	Racine
Geoffrey	Greiveldinger	Chief of Staff	Office of County Executive	Racine
			Paratech Ambulance Service, Inc	East Troy
Roger	Caron	Executive Director	Racine Association of Manufacturers and Commerce	Racine
Mark	Eickhorst	Mobility Coordinator	Racine Association of Manufacturers and Commerce	Racine
William	McReynolds	County Executive	Racine County	Racine
Ninna	Frank	Outreach Specialist	Racine County Aging and Disabilities Resource Center	Racine
Michelle	Goggins	Director	Racine County Aging and Disabilities Resource Center	Racine
Joseph	Bellante	County Board Supervisor	Racine County Board	Wind Lake
Katherine	Buske	County Board Supervisor	Racine County Board	Racine
Gaynell	Dyess	County Board Supervisor	Racine County Board	Racine
Robert	Miller	County Board Supervisor	Racine County Board	Racine
Thomas	Pringle	County Board Supervisor	Racine County Board	Burlington
Donnie	Snow	County Board Supervisor	Racine County Board	Racine

First Name	Last Name	Title	Organization	City
Andrea	Bumpurs	Racine County Grant Writer	Racine County Human Services	Racine
Mary	Connolly	Coordinator of Contract Monitoring and Evaluation	Racine County Human Services	Racine
Debra	Jossart	Human Services Director	Racine County Human Services	Racine
Mary Jean	Smith	Adult Services Division Manager	Racine County Human Services	Racine
Mary	Perman		Racine County Human Services, Burlington Office	Burlington
Colleen	Swan		Racine County Human Services, Burlington Office	Burlington
Kerry	Barutha		Racine County Opportunity Center	Burlington
Bill	Lee		Racine County Opportunity Center	Racine
Nancy	Holmlund	President	Racine Interfaith Coalition	Racine
Ruth	Gedwardt		Racine Taxpayer's Association	Racine
Patrick	Starken	Transportation Specialist	Racine Unified School District	Racine
Curt	Kowalski		Recovery Medical Transport	Racine
Susan	Feehrer	Director	Retired and Senior Volunteer Program of Racine County (RSVP)	Racine
			Senior Cab	Lake Geneva
Bruce	Clement	Administrator	Sheridan Medical Complex	Kenosha
Stella	Lutz	Resident Manager	Silvercrest Apartments	Silver Lake
Pauline	Lorenz		Society's Assets	Kenosha
Karen	Olufs	Director of Independent Living	Society's Assets	Racine
Eppy	Smith		Society's Assets	Elkhorn
John	Schnabl	Director	Southeastern Wisconsin Area Agency On Aging	Brookfield
Beth	Norris	Coordinator	Southeastern Wisconsin WDA	Kenosha
Mike	Nardi	Owner	Southport Transportation	Kenosha
Bob	Prudon	Owner	Southport Transportation	Kenosha
Joyce	Mitchell	Director	St Josephs Adult Day Care	Kenosha
Kathy	Aalto	Social Worker	St. Catherine's Kidney Center	Pleasant Prairie
Theresa	Gilliland		State of Wisconsin Office for the Blind and Visually Impaired	Kenosha
Sandy	Engel		The ARC of Racine County	Racine
Bonnie	Reineke		The ARC Western Racine	Waterford
Lyle	Tietel		Tietel's Transport	Burlington
			TNJ Transport	Mequon
Thomas	Kerkman	Chairman	Town of Brighton	Kansasville
Richard	Gossling	Chairman	Town of Bristol	Bristol
Randy	Kerkman	Administrator	Town of Bristol	Bristol
Tom	Kramer	Town Business Manager/Treasurer	Town of Norway	Wind Lake
Virgil	Gentz	Chairman	Town of Paris	Union Grove
Matt	Ostrander	Chairperson	Town of Randall	Twin Lakes
Stan	Bugnacki	Supervisor	Town of Raymond	Caledonia
Diann	Tesar	Chairperson	Town of Salem	Salem
William	Morris	Administrator	Town of Somers	Somers

First Name	Last Name	Title	Organization	City
James	Smith	Chairperson	Town of Somers	Somers
Jeffery	Butler	Chairman	Town of Wheatland	Burlington
Darlene	Duncan	Director of Special Education	Union Grove Special Education Consortium	Union Grove
Jaymie	Laurent	Social Worker	United Hospital System	Kenosha
Beverlee	Baker		UW Extension	Sturtevant
Janet	Nixon		Veterans Center	Union Grove
Christine	Jordan		Veterans Service Office	Elkhorn
Thomas	Lois		Veterans Service Office	Kenosha
David	Buehn	President	Village of Paddock Lake	Salem
Ernest	Mooney	Administrator	Village of Paddock Lake	Salem
Mike	Pollocoff	Administrator	Village of Pleasant Prairie	Pleasant Prairie
John	Steinbrink	President	Village of Pleasant Prairie	Pleasant Prairie
Erin	Winch	Director of Therapeutic Recreation	Village of Pleasant Prairie	Pleasant Prairie
Roger	Johnson	President	Village of Silver Lake	Silver Lake
David	Cox	Administrator	Village of Twin Lakes	Twin Lakes
Howard	Skinner	President	Village of Twin Lakes	Twin Lakes
Gary	Hanson	Village Administrator and Director of Public Works	Village of Union Grove	Union Grove
Rebecca	Ewald	Village Administrator	Village of Waterford	Waterford
Samantha	Branski	Property Manager	Village Plaza Apartments	Kenosha
Cynthia	Simonsen		VIP Services, Inc	Elkhorn
David	Bretl	County Administrator	Walworth County Administration	Elkhorn
Nancy	Russell	Chairperson	Walworth County Board of Supervisors	Elkhorn
James	Wooldridge	COA Chairperson	Walworth County COA	Darien
Elizabeth	Aldred	Deputy Director	Walworth County Health and Human Services	Elkhorn
Lori	Muzatko	Director	Walworth County Health and Human Services	Elkhorn
Linda	Seemeyer	Director	Walworth County Health and Human Services	Elkhorn
Jennifer	Selz	Adult Services Supervisor	Walworth County Health and Human Services	Elkhorn
David	Thompson	Deputy Director	Walworth County Health and Human Services	Elkhorn
Roger	Zierfus		Walworth County Health and Human Services	Elkhorn
Mike	Harry		Walworth County Job Center/Kaiser Group	Elkhorn
Marilyn	Putz	Director	Walworth County Job Center/Kaiser Group	Elkhorn
Michael	Cotter	Deputy Corp Counsel	Walworth County LURM	Elkhorn
Harold	Smith		Washington Manor	Kenosha
Kathy	Merlo	Director of Special Education	Waterford High School	Waterford
Matthew	Mueller	Director of Government Funding	Ways to Work	Milwaukee
Diana	Jaeger	Director	Westosha Community Center	Bristol
Karolyn	Hermes	Supervisor of Hospital Social Services	Wheaton Franciscan Health Care - All Saints	Racine
Tom	Dieckelman	Vice President	Wisconsin Coach Lines, Inc.	Waukesha
Michael	Pjevach	President	Wisconsin Coach Lines, Inc.	Waukesha

First Name	Last Name	Title	Organization	City
Pat	Shaugnessy	Deputy Commandant	Wisconsin Veteran's Home--Union Grove	Union Grove
Sherry	Hartog		Women's Resource Center	Burlington
Debbie	Lamb	Administrator	Woodstock Health and Rehabilitation Center	Kenosha
Sue	Fergus	Economic Support Manager	Workforce Development Center	Racine
Alice	Oliver	Manager	Workforce Development Center	Racine
Ed	Block			Kenosha
Doris	Carnahan			Twin Lakes
Debra	Harris			Racine
Ed	Jenkins			Kenosha
Keith	Kmiecik	Physically Disabled AODA Counselor		Kenosha
Karen	Lockwood			Kenosha
Lisa	Thompson			Kenosha
Karen	Schmiechen	Planner	Wisconsin Department of Transportation, SE Region	Waukesha
Bobbie	Beson-Crone	Program Manager	Division of Transportation Investment Management	Madison
Becky	Soderholm	Federal Compliance Manager	Public & Specialized Transit Section	Madison

Appendix B

RECORD OF FIRST MEETING 2008 COORDINATION PLANNING IN KENOSHA, RACINE, AND WALWORTH COUNTIES

DATE: August 26, 2008
TIME: 9:30 a.m.
PLACE: Room 100
Gateway Technical College
Burlington, Wisconsin

PARTICIPANTS

Valjean Abrahamson Kenosha Achievement Center, Inc.
Julie Anderson Director, Racine County Department of Planning & Development
Ann Bradshaw Living Waters
Mary Connolly Monitoring and Evaluation, Racine County Human Services
Michael Cotter Deputy Corporate Counsel, Walworth County Land Use and Resource Management
Jackie Cranley Society's Assets, Inc.
Tom Dieckelman Vice President, Wisconsin Coach Lines, Inc.
Mark Eickhorst Mobility Coordinator, Racine Area Manufacturers and Commerce
Carolyn Feldt Assistant Director, Kenosha County Division of Aging and Disability Services
Ninna Frank Outreach Specialist, Resource Center, Racine County Aging and Disabilities
Ed Fricke VIP Services, Inc.
Adelene Greene Director, Kenosha County Department of Workforce Development
Geoffrey Greiveldinger Chief of Staff, Office of County Executive, Racine County
Daniel Haney Transportation Manager, Community Care Inc.
Sherry Hartog Women's Resource Center/Love, Inc.
Tami Jandrowski Society's Assets, Inc.
John Kramer Delavan RescueSquad/DRS Medical Transit
Tom Kramer Manager/Treasurer, Town of Norway
Roger Lincoln Kenosha Achievement Center, Inc.
Karen Lockwood Kenosha County Specialized Transportation Commission
Pauline Lorenz Society's Assets, Inc.
John Milisauskas Kenosha County Job Center
Ellen Mutter Lincoln Lutheran Adult Day Services
Lori Muzatko Director, Walworth County Health and Human Services
Karen Olufs Director of Independent Living Services, Society's Assets, Inc.
Patti J. Pagel Senior Care Project Coordinator, Aurora Health Care
Marilyn Putz Director, Walworth County Job Center/Kaiser Group
Karen Schmiechen Wisconsin Department of Transportation-Southeast Region
James M. Smith Chair, Town of Somers
John Steinbrink President, Village of Pleasant Prairie
Nancy Ward VIP Services, Inc.
Erin Winch Director of Therapeutic Recreation, Village of Pleasant Prairie
Peggy Woehrer Racine County Triad West
James P. Wooldridge Chair, Walworth County Council on Aging
Roger Zierfus Walworth County Health and Human Services
Mark Zlevor Vice President, Gateway Technical College

FACILITATORS

Albert A. Beck..... Principal Planner, SEWRPC
Sonia Dubielzig Senior Planner, SEWRPC
Eric LyndePlanner, SEWRPC

WELCOME AND INTRODUCTIONS

Mr. Al Beck welcomed participants and asked attendees to introduce themselves, the agency they represented, and, if they provided any service, what type of service they provided to the meeting. Mr. Beck then explained the main tasks for the meeting:

1. Background information on coordination requirements
2. Assessment of transportation needs
3. Assessment of existing transportation services
4. Wrap-up and preview of next meeting

BACKGROUND INFORMATION ON COORDINATION REQUIREMENTS

Mr. Beck described the federal requirements for project funding and coordination plans. He also described the Wisconsin Department of Transportation 2008 coordinated planning process and the need for multi-county and regional plans.

ASSESSMENT OF TRANSPORTATION NEEDS

Ms. Dubielzig described the characteristics of the Kenosha, Racine, and Walworth County area, including the actual and projected total population trends and the trends for each transit-dependent population group. Maps of the distributions of total population, transit-dependent population groups, employment, and activity centers were shown and described as well.

ASSESSMENT OF EXISTING TRANSPORTATION SERVICES

Mr. Lynde described the inventories of principal transportation providers in Kenosha, Racine, and Walworth Counties, divided into local and intercity transit services for the general public and into human services transportation providers. He then described the service area map for public transportation providers.

SMALL GROUP DISCUSSION: ASSESSMENT OF SERVICES WITHIN EACH COUNTY AND BETWEEN EACH COUNTY

After the presentation of the inventories of existing services, the attendees were divided into six small groups of five to seven people, according to the county they were affiliated with. In the small groups, participants discussed how well current transportation services were meeting residents' needs for travel within each county as well as between the three counties. They were then asked to rank the existing services from 1 = "Excellent" to 5 = "Very Poor" for eight different categories. The small groups reported the results of their assessments to the rest of the attendees. A summary of the key findings of the small group assessment appears in the County Coordinated Public Transit-Human Services Transportation Plans.

WRAP-UP AND PREVIEW OF NEXT MEETING

After the small group discussions, the facilitators asked the attendees to complete several tasks prior to the next meeting. Each attendee was given a blank map on which they were instructed to illustrate unmet needs in the three-county area and bring it to the next meeting. In addition, the facilitators asked attendees to prioritize the unmet transportation needs discussed in their small groups, and to review a table of potential actions and strategies for addressing those needs. The facilitators explained that the next meeting would focus on strategies to address unmet needs, and on determining who will be responsible for implementing the selected strategies and continuing transportation coordination in the future.

* * *

Appendix C

RECORD OF SECOND MEETING 2008 COORDINATION PLANNING IN KENOSHA, RACINE, AND WALWORTH COUNTIES

DATE: September 8, 2008

TIME: 9:30 a.m.

PLACE: Room 100
Gateway Technical College
Burlington, Wisconsin

PARTICIPANTS

Valjean Abrahamson Kenosha Achievement Center, Inc.

Julie Anderson Director, Racine County Department of Planning & Development

Len Brandrup Director of Transportation, Kenosha Area Transit System

Mary Connolly Monitoring and Evaluation, Racine County Human Services

Mark Eickhorst Mobility Coordinator, Racine Area Manufacturers and Commerce

Bill Erickson Kenosha County Job Center

Carolyn Feldt Assistant Director, Kenosha County Division of Aging and Disability Services

Ninna Frank Outreach Specialist, Resource Center, Racine County Aging and Disabilities

Marty Garb General Manager, First Transit

Curtis Garner Belle Urban System, City of Racine

Adelene Greene Director, Kenosha County Department of Workforce Development

Geoffrey Greiveldinger Chief of Staff, Office of County Executive, Racine County

Daniel Haney Transportation Manager, Community Care Inc.

Tami Jandrowski Society's Assets, Inc.

Jane Kirchhoff Goodwill Industries of Southeastern Wisconsin

Cindy Lester A Day In Time, Inc.

Roger Lincoln Kenosha Achievement Center Inc.

Karen Lockwood Kenosha County Specialized Transportation Commission

Pauline Lorenz Society's Assets, Inc.

Chris Nielsen American Cancer Society

Thomas Pringle County Board Supervisor, Racine County

Marilyn Putz Director, Walworth County Job Center/Kaiser Group

Nancy Russell Chairperson, Walworth County Board of Supervisors

Cindy Siefert Lincoln Lutheran, Inc.

Cynthia Simonsen Executive Director, VIP Services, Inc.

James M. Smith Chair, Town of Somers

Becky Soderholm Program Manager, Wisconsin Department of Transportation

John Steinbrink President, Village of Pleasant Prairie

Debbie Waldron-Smith A Day In Time, Inc.

Erin Winch Director of Therapeutic Recreation, Village of Pleasant Prairie

James Wooldridge Chair, Walworth County Council on Aging

Roger Zierfus Walworth County Health and Human Services

FACILITATORS

Albert A. Beck Principal Planner, SEWRPC

Sonia Dubielzig Senior Planner, SEWRPC

Eric Lynde Planner, SEWRPC

WELCOME AND INTRODUCTIONS

Mr. Al Beck welcomed participants and asked attendees to introduce themselves, the agency they represented, and, if they provided any service, what type of service they provided to the meeting. Mr. Beck then explained the main tasks for the meeting:

1. Presentation on transportation funding programs and State coordination efforts
2. Review of key findings from the previous meeting
3. Assessment of unmet transportation needs and gaps in transportation service
4. Presentation of strategies to address unmet needs and gaps in service
5. Selection and prioritization of strategies to address unmet needs and gaps in service
6. Wrap-up

PRESENTATION OF TRANSPORTATION FUNDING PROGRAMS AND STATE COORDINATION EFFORTS

Becky Soderholm of the Wisconsin Department of Transportation (WisDOT) described the funding programs that exist for transportation services and projects. She also described the role and efforts that WisDOT has made to aid in completing the coordination planning process.

REVIEW OF KEY FINDINGS FROM PREVIOUS MEETING

Mr. Lynde presented the key findings determined from the previous meeting. Several additions to the findings were made based on feedback from attendees.

SMALL GROUP DISCUSSION: RANKING OF UNMET TRANSPORTATION NEEDS

After the review of key findings, the attendees were divided into three small groups, according to the county they were affiliated with. In the small groups, participants discussed worksheets that each had completed prior to the meeting, describing how well current transportation services were meeting residents' needs for travel within each county as well as between the three counties. They were then asked to come to an agreement on the unmet needs, and the priority, or order of importance, of addressing each unmet need.

PRESENTATION OF STRATEGIES TO ADDRESS UNMET NEEDS AND GAPS IN SERVICE

Ms. Dubielzig presented strategies that could potentially address the prioritized unmet transportation needs and gaps in service that were derived from the previous small group discussion. Each attendee was asked to consider if each strategy could succeed within the county they were associated with.

SMALL GROUP DISCUSSION: SELECTION AND PRIORITIZATION OF STRATEGIES TO ADDRESS UNMET NEEDS AND GAPS IN SERVICE

After the presentation of strategies, the attendees returned to their groups. In the groups, they discussed the strategies and how well they might meet the needs of their county. They were then asked to select strategies that were applicable within their county and between counties, and prioritize the selected strategies based on their ability to address the previously determined unmet needs and gaps in service, as well as how easy each strategy would be to implement. In addition, the participants were asked to identify who would be responsible for implementing each strategy and to agree upon how future transportation coordination will happen. A summary of the prioritized strategies appears in each County's Coordination Plan.

WRAP-UP

After the small group discussions, the facilitators concluded the meeting by explaining how SEWRPC staff would assemble each County Coordinated Public Transit-Human Services Transportation Plan and send it to the participants from each county for review. The facilitators also asked each county if they desired a third meeting to review and complete their plan. Attendees from Kenosha and Walworth Counties responded that a third meeting would be desirable, while Racine County representatives felt that they did not need an additional meeting.

* * *