



# ***Sustain, Reconnect, and Grow the Environmental Corridors***

## ***“SRGE”***



***David A. Schilling  
Principal Planner  
Southeastern Wisconsin  
Regional Planning Commission***



# ***SRGE***

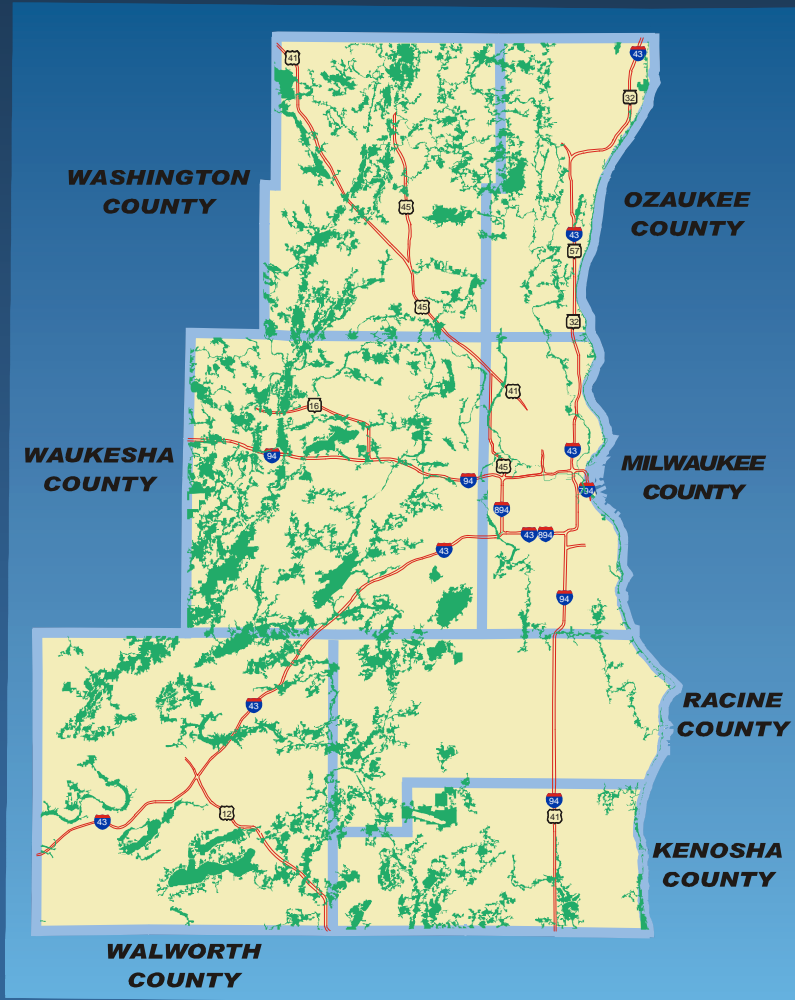
## **An initiative that seeks to:**

- **Recognize and reemphasize the importance of environmental corridors**
- **Enhance and sustain existing environmental corridors**
- **Expand environmental corridors**

**and thereby benefit water quality, expand wildlife habitat, provide recreational opportunities and retain rural character.**



# *Environmental Corridors in Southeastern Wisconsin: 2000*



- **Primary Environmental Corridors First Identified in 1966**
- **Best Remaining Elements of the Natural Resource Base**
- **Comprise About 17 Percent of Seven-County Region**
- **SEWRPC Recommends Preservation and Protection**
  - Acquisition
  - Regulation
  - Limited development in upland areas



# ***Natural Resource Base Elements***

- **Major Lakes – 50 acres or larger**
- **Minor Lakes – 5-49 acres**
- **Perennial River or Stream**
- **Shoreland**
  - **Perennial - 75'**
  - **Intermittent - 50'**
  - **Lake Michigan - 200'**



# ***Natural Resource Base Elements— continued***

- **100-Year Floodland**
- **Wetland**
- **Upland Woods**
- **Wildlife Habitat**
  - **High value**
  - **Medium value**
  - **Low value**





# ***Natural Resource Base Elements— continued***

- **Steep Slope**
    - 20 percent or greater
    - 12 percent to 19 percent
  - **Prairie**
  - **Wet, Poorly Drained, and Organic Soils – not specifically mapped**
- 



# ***Natural Resource Base Elements— continued***

- **Existing Park or Open Space Site**
  - Open space site
  - Park or recreation site
- **Potential Park Site**
  - High value
  - Medium value
  - Low value



# ***Natural Resource Base Elements— continued***

- **Historic Site**
  - **Structural**
  - **Other Cultural**
  - **Archeological**
- **Scenic Viewpoint**
- **Natural Area**
  - **NA-1**
  - **NA-2**
  - **NA-3**





# ***Delineation of Environmental Corridors***

- **Apply minimum width, length, and area criteria**
  - **Primary Environmental Corridors – 200 feet wide, 2 miles long, and 400 acres**
  - **Secondary Environmental Corridors – 1 mile long and 100 acres (no minimum width)**
  - **Isolated Natural Resource Area – 200 feet wide and 5 acres**





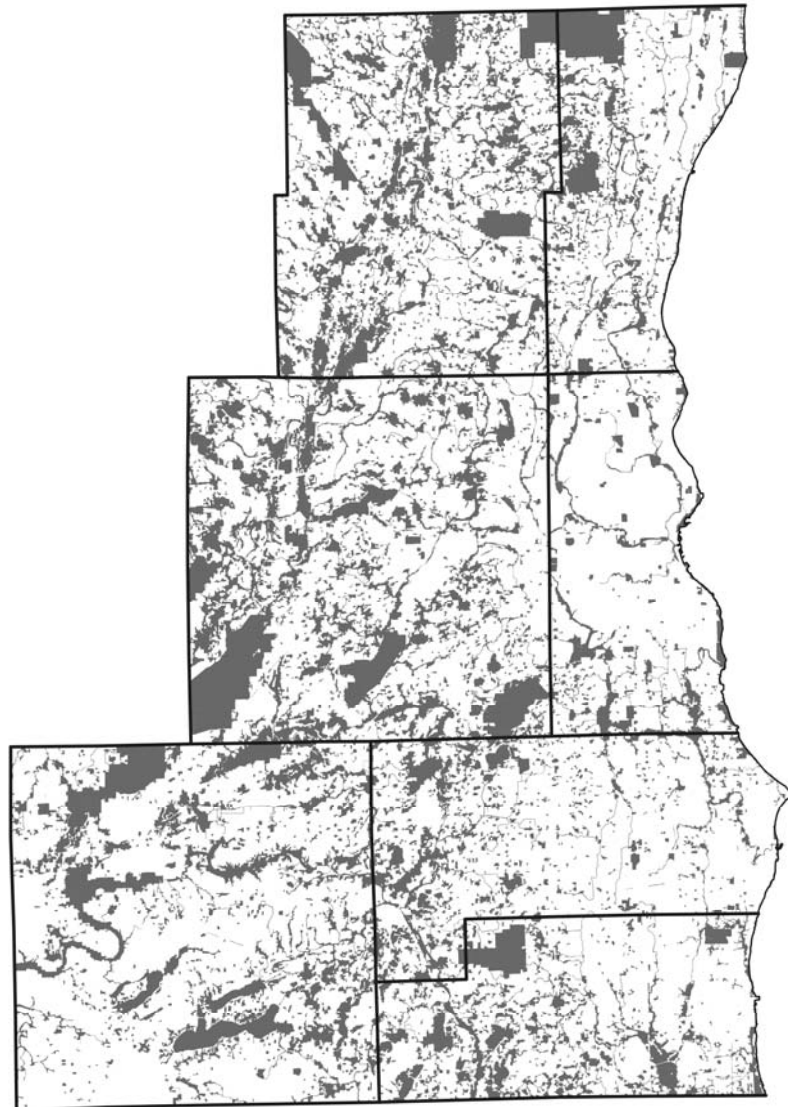
# ***Commission Plan Recommendation***

---

- **Primary Environmental Corridors – preserve and protect**
- **Secondary Environmental Corridors and Isolated Natural Resource Areas – consider for preservation based on County and local Plans and in a manner consistent with State and Federal regulations**



# ***Environmentally Significant Lands in the Southeastern Wisconsin Region***

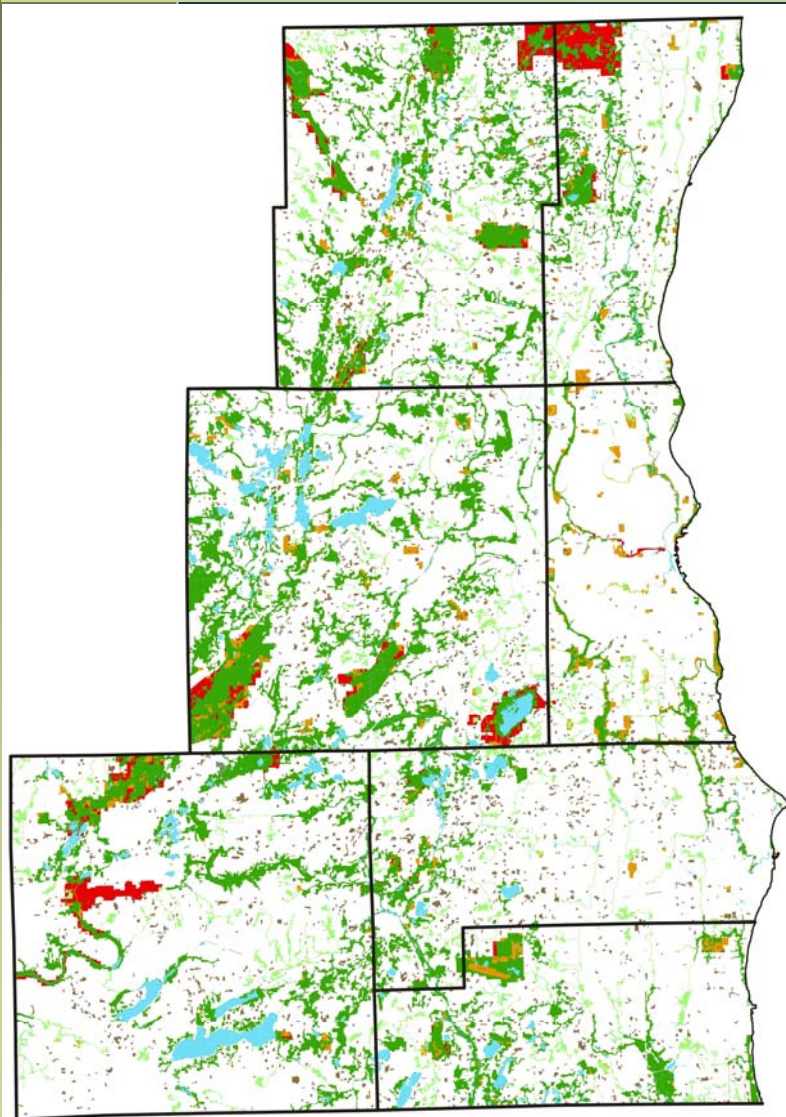


## **Defined As**

- **Primary Environmental Corridors**
- **Secondary Environmental Corridors**
- **Isolated Natural Resource Areas**
- **Natural Areas and Critical Species Habitat sites outside of Primary Environmental Corridors, Secondary Environmental Corridors, and Isolated Natural Resource Areas**
- **Candidate Corridor Expansion Areas**
- **Buffer Lands/Corridor Expansion Areas**



# ***Environmentally Significant Lands in the Southeastern Wisconsin Region: 2005***



-  Primary Environmental Corridors
-  Secondary Environmental Corridors
-  Isolated Natural Resource Areas
-  Natural Areas and Critical Species Habitat sites outside of Primary Environmental Corridors, Secondary Environmental Corridors, and Isolated Natural Resource Areas
-  Candidate Corridor Expansion Areas
-  Buffer Lands/Corridor Expansion Areas
-  Surface Water
-  DNR Project Boundary 2006

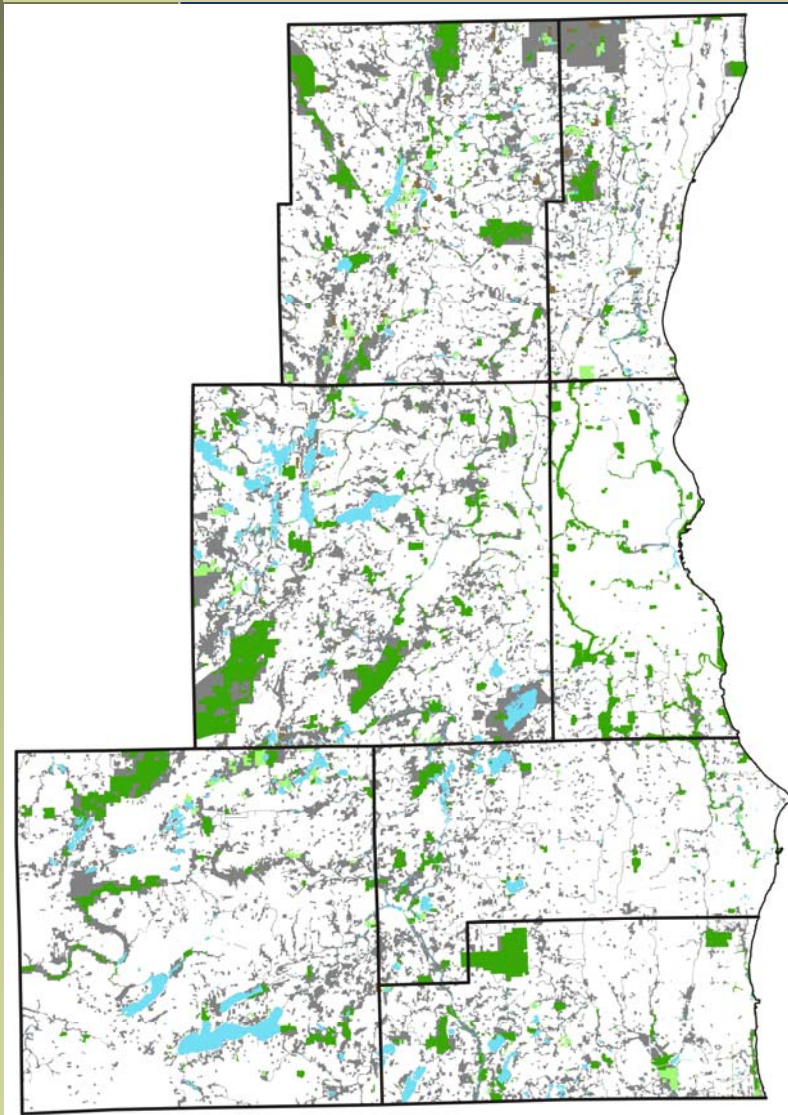


# ***Environmentally Significant Lands in the Southeastern Wisconsin Region: 2005—continued***

- **Environmentally Significant Lands – 635 square miles**
- **Primary Environmental Corridors – 409 square miles (64 percent)**
- **Secondary Environmental Corridors – 75 square miles (12 percent)**
- **Isolated Natural Resource Area – 61 square miles (10 percent)**
- **Natural Areas and Critical Species Habitat sites outside of Primary Environmental Corridors, Secondary Environmental Corridors, and Isolated Natural Resource Areas – 5 square miles (1 percent)**
- **Candidate Corridor Expansion Areas – 44 square miles (7 percent)**
- **Buffer Lands/Corridor Expansion Areas – 41 square miles (6 percent)**



# Protection Status of Environmentally Significant Lands<sup>a</sup> in the Southeastern Wisconsin Region: 2005



Publicly Owned Protected Lands<sup>b</sup> (156 square miles)



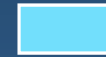
Privately Owned Protected Lands<sup>c</sup> (20 Square Miles)



Lands Protected by Conservation Easements<sup>d</sup> (6 Square Miles)



Environmentally Significant Lands Not Included Above (453 Square Miles)



Surface Water

<sup>a</sup> Defined as primary environmental corridors (pec); secondary environmental corridors (sec); isolated natural resource areas (inra); natural areas and critical species habitat sites outside of primary environmental corridors, secondary environmental corridors, and isolated natural resource areas: candidate corridor expansion areas; and buffer lands/corridor expansion areas.

<sup>b</sup> Defined as lands owned in fee simple by Federal, State, County, and local governments; public school districts and utility, sewerage and lake districts.

<sup>c</sup> Defined as lands owned in fee simple by private organizations, including land trusts, schools, conservation clubs, campgrounds, and other compatible groups. Some of these lands are vulnerable to development.

<sup>d</sup> Defined as lands where either a public body or a land trust have the legal ability to seek enforcement of a conservation easement.



# Protection Status of Environmentally Significant lands in the Southeastern Wisconsin Region: 2005

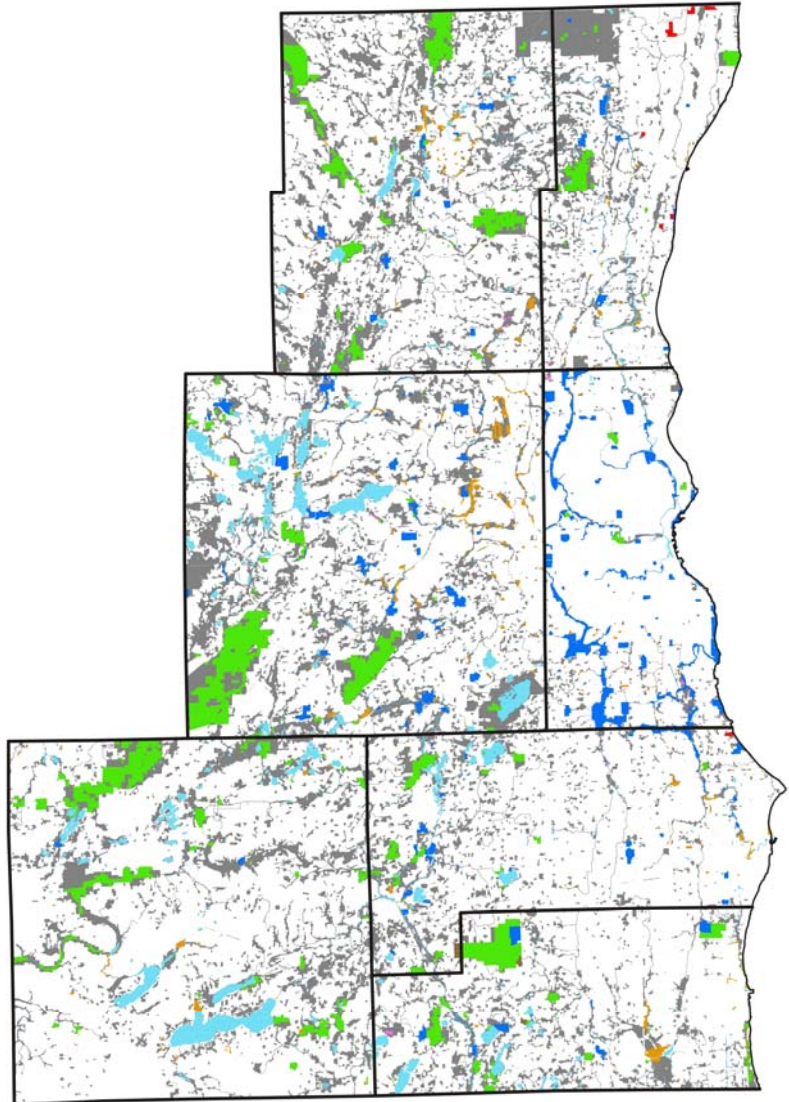
County	Publicly Owned Protected Lands		Privately Owned Protected Lands		Lands Protected by Conservation Easements		Other Environmentally Significant Lands		Total
	Square Miles	Percent of Total	Square Miles	Percent of Total	Square Miles	Percent of Total	Square Miles	Percent of Total	
Kenosha.....	18.4	29.5	2.5	4.0	-- <sup>a</sup>	--	41.5	66.5	62.4
Milwaukee.....	24.1	66.8	0.4	1.1	--	--	11.6	32.1	36.1
Ozaukee.....	8.5	14.6	2.7	4.6	1.8	3.1	45.3	77.7	58.3
Racine.....	11.3	19.7	1.2	2.1	0.1	0.2	44.7	78.0	57.3
Walworth.....	24.2	19.4	4.4	3.5	0.3	0.2	95.9	76.9	124.8
Washington.....	24.6	19.1	5.3	4.1	2.6	2.0	96.4	74.8	128.9
Waukesha.....	45.0	27.0	3.1	1.9	0.9	0.5	117.9	70.6	166.9
<b>Region</b>	<b>156.1</b>	<b>24.6</b>	<b>19.6</b>	<b>3.1</b>	<b>5.7</b>	<b>0.9</b>	<b>453.3</b>	<b>71.4</b>	<b>634.7</b>


<sup>a</sup> Less than 0.05 square mile.

Source: SEWRPC.



# ***Publicly Owned Protected Environmentally Significant Lands<sup>a</sup> in the Southeastern Wisconsin Region: 2005***



-  Federal (1 Square Mile)
-  State (93 Square Miles)
-  County (45 Square Miles)
-  Local Government (14 Square Miles)
-  School District (2 Square Miles)
-  Other Special Districts (1 Square Mile)
-  Environmentally Significant Lands Not Included Above
-  Surface Water

*a Defined as lands owned in fee simple by Federal, State, County, and local governments; public school districts and utility, sewerage and lake districts.*



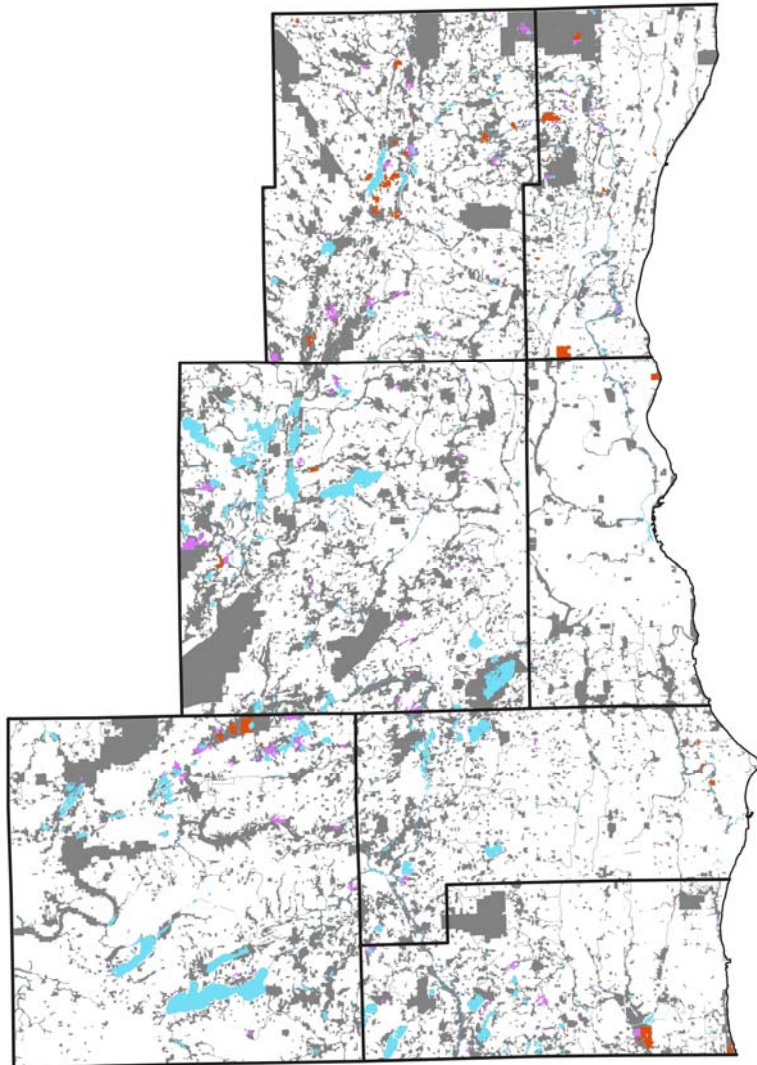
# Publicly Owned Protected Environmentally Significant Lands in the Southeastern Wisconsin Region by Ownership Category: 2005


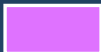


County	Federal		State		County		Local Government		School District		Other Special District		Total
	Square Miles	Percent of Total	Square Miles	Percent of Total	Square Miles	Percent of Total	Square Miles	Percent of Total	Square Miles	Percent of Total	Square Miles	Percent of Total	
Kenosha.....	--	--	12.7	69.0	2.9	15.8	1.9	10.3	0.8	4.4	0.1	0.5	18.4
Milwaukee....	--	--	1.0	4.2	22.3	92.5	0.5	2.1	0.1	0.4	0.2	0.8	24.1
Ozaukee.....	1.0	11.8	4.5	52.9	1.9	22.3	0.9	10.6	0.1	1.2	0.1	1.2	8.5
Racine.....	0.1	0.9	5.6	49.5	4.2	37.2	1.3	11.5	0.1	0.9	--	--	11.3
Walworth.....	--	--	22.3	92.1	0.4	1.7	1.4	5.8	0.1	0.4	--	--	24.2
Washington...	--	--	19.4	78.8	2.4	9.8	2.4	9.8	0.3	1.2	0.1	0.4	24.6
Waukesha.....	--	--	27.8	61.8	10.9	24.2	6.0	13.3	0.2	0.5	0.1	0.2	45.0
<b>Region</b>	<b>1.1</b>	<b>0.7</b>	<b>93.3</b>	<b>59.8</b>	<b>45.0</b>	<b>28.8</b>	<b>14.4</b>	<b>9.2</b>	<b>1.7</b>	<b>1.1</b>	<b>0.6</b>	<b>0.4</b>	<b>156.1</b>

Source: SEWRPC.



# ***Privately Owned Protected Environmentally Significant Lands<sup>a</sup> in the Southeastern Wisconsin Region: 2005***



-  Land Trust (8 Square Miles)
-  Other<sup>b</sup> (12 Square Miles)
-  Environmentally Significant Lands Not Included Above
-  Surface Water

<sup>a</sup> *Defined as lands owned in fee simple by private organizations, including land trusts, schools, conservation clubs, campgrounds, and other compatible groups. Some of these lands are vulnerable to development.*

<sup>b</sup> *Includes private schools, and private recreation sites.*



# ***Privately Owned Protected Environmentally Significant Lands<sup>a</sup> in the Southeastern Wisconsin Region by Ownership Category: 2005***

County	Land Trusts		Other <sup>b</sup>		Total
	Square Miles	Percent of Total	Square Miles	Percent of Total	
Kenosha	1.2	48.0	1.3	52.0	2.5
Milwaukee	0.3	75.0	0.1	25.0	0.4
Ozaukee	1.8	66.7	0.9	33.3	2.7
Racine	0.2	16.7	1.0	83.3	1.2
Walworth	1.2	27.3	3.2	72.7	4.4
Washington	2.5	47.2	2.8	52.8	5.3
Waukesha	0.4	12.9	2.7	87.1	3.1
<b>Region</b>	<b>7.6</b>	<b>38.8</b>	<b>12.0</b>	<b>61.2</b>	<b>19.6</b>

*<sup>a</sup> Defined as lands owned in fee simple by private organizations, including land trusts, schools, conservation clubs, campgrounds, and other compatible groups. Some of these lands are vulnerable to development.*

*<sup>b</sup> Includes private schools, and private recreation site.*

**Source: SEWRPC.**



# ***Holders of Conservation Easements on Protected Environmentally Significant Lands in the Southeastern Wisconsin Region: 2005***

County	Public Holders		Private Holders		Total
	Square Miles	Percent of Total	Square Miles	Percent of Total	
Kenosha.....	-- <sup>a</sup>	--	--	--	-- <sup>a</sup>
Milwaukee.....	--	--	--	--	--
Ozaukee.....	0.6	33.3	1.2	66.7	1.8
Racine.....	0.1	100.0	--	--	0.1
Walworth.....	0.3	100.0	-- <sup>a</sup>	--	0.3
Washington.....	0.9	34.6	1.7	65.4	2.6
Waukesha.....	0.5	55.6	0.4	44.4	0.9
<b>Region</b>	<b>2.4</b>	<b>42.1</b>	<b>3.3</b>	<b>57.9</b>	<b>5.7</b>

<sup>a</sup> *Less than 0.05 square mile.*

*Source: SEWRPC.*



# Protection Status of Environmentally Significant Lands in the Southeastern Wisconsin Region: 2005

County	Total Area of County <sup>a</sup> (square miles)	Environmentally Significant Lands <sup>b</sup>		Environmentally Significant Lands Considered to be Protected Through Public or Private Ownership Interest <sup>c</sup>	
		Square Miles	Proportion of County Land Area	Square Miles	Proportion of Total Environmentally Significant Lands
Kenosha	271	62.4	23.0	20.9	33.5
Milwaukee	241	36.1	15.0	24.5	67.9
Ozaukee	232	58.3	25.1	13.0	22.3
Racine	332	57.3	17.3	12.6	22.0
Walworth	554	124.8	22.5	28.9	23.2
Washington	429	128.9	30.0	32.5	25.2
Waukesha	554	166.9	30.1	49.0	29.4
<b>Region</b>	<b>2,613</b>	<b>634.7</b>	<b>24.3</b>	<b>181.4</b>	<b>28.6</b>

<sup>a</sup>Does not include surface water.

<sup>b</sup>Includes primary environmental corridors; secondary environmental corridors; isolated natural resource areas; natural areas and critical species habitat sites outside primary environmental corridors, secondary environmental corridors, and isolated natural resource areas; and selected potential buffer lands; does not include water.

<sup>c</sup>Defined as lands owned in fee simple by Federal, State, County, and local governments; public school districts; utility, sewerage, and lake districts; and private organizations, including land trusts, schools, conservation clubs, campgrounds, and other compatible groups (some of these lands may be vulnerable to development); and lands where either a public body or a land trust have the legal ability to seek enforcement of a conservation easement.

Source: SEWRPC.



## ***SRGE Ongoing Efforts***

- **Annually acquire information on recent acquisition activity (gains and losses) of conservation/land management agencies/groups**
- **Information should be provided in the first 60 days of the year for the previous calendar year**
- **Periodic/annual update of SRGE analysis to highlight the previous year(s) activity**



***Information should be provided to –***

**David A. Schilling, Principal Planner**

**SEWRPC**

**P.O. Box 1607**

**Waukesha, WI 53187-1607**

**(262) 547-6721**

**Or via e-mail at [dschilling@sewrpc.org](mailto:dschilling@sewrpc.org)**



# *Questions?*