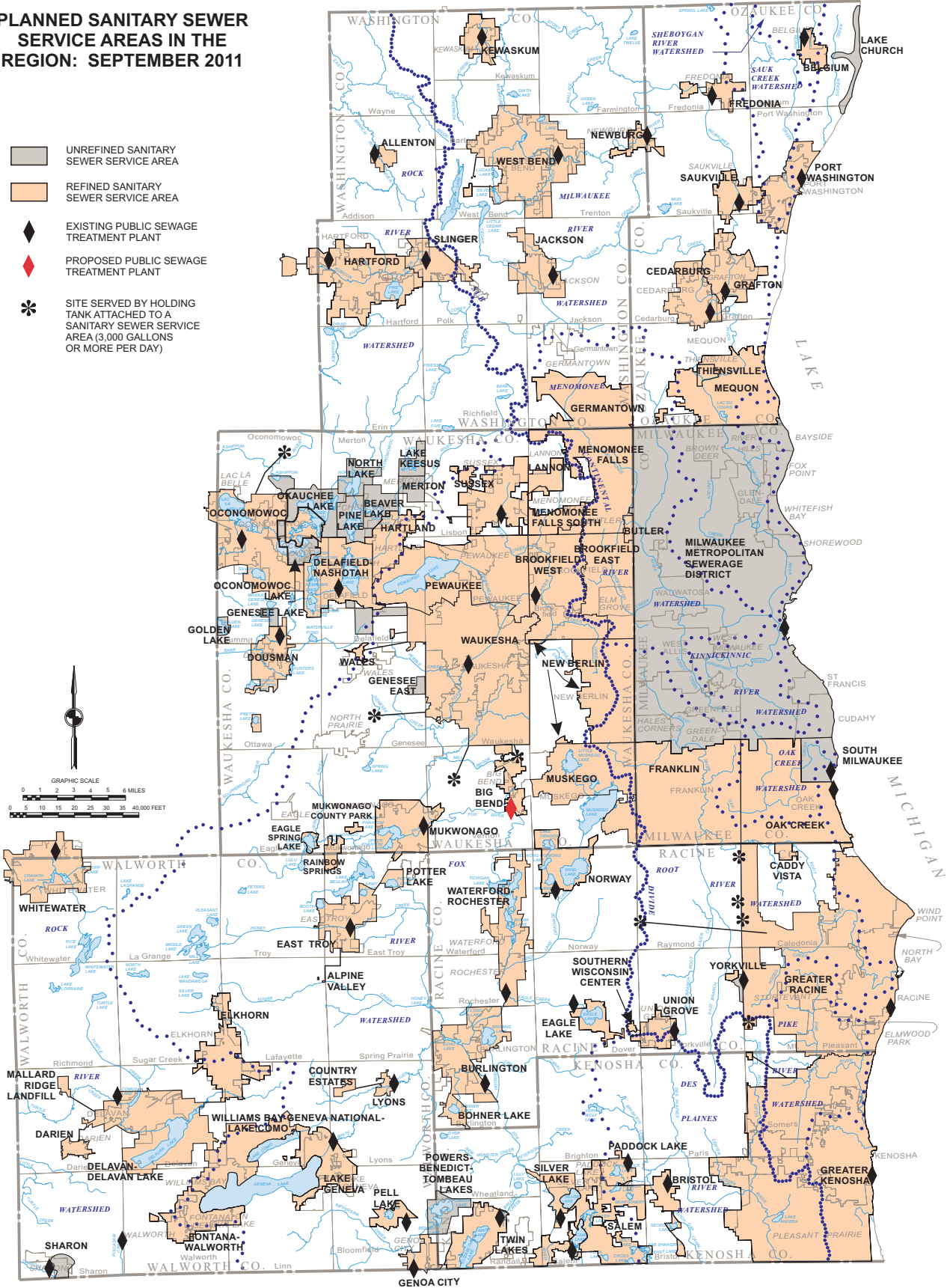


# PLANNED SANITARY SEWER SERVICE AREAS IN THE REGION: SEPTEMBER 2011

- UNREFINED SANITARY SEWER SERVICE AREA
- REFINED SANITARY SEWER SERVICE AREA
- EXISTING PUBLIC SEWAGE TREATMENT PLANT
- PROPOSED PUBLIC SEWAGE TREATMENT PLANT
- SITE SERVED BY HOLDING TANK ATTACHED TO A SANITARY SEWER SERVICE AREA (3,000 GALLONS OR MORE PER DAY)



Source: SEWRPC.