



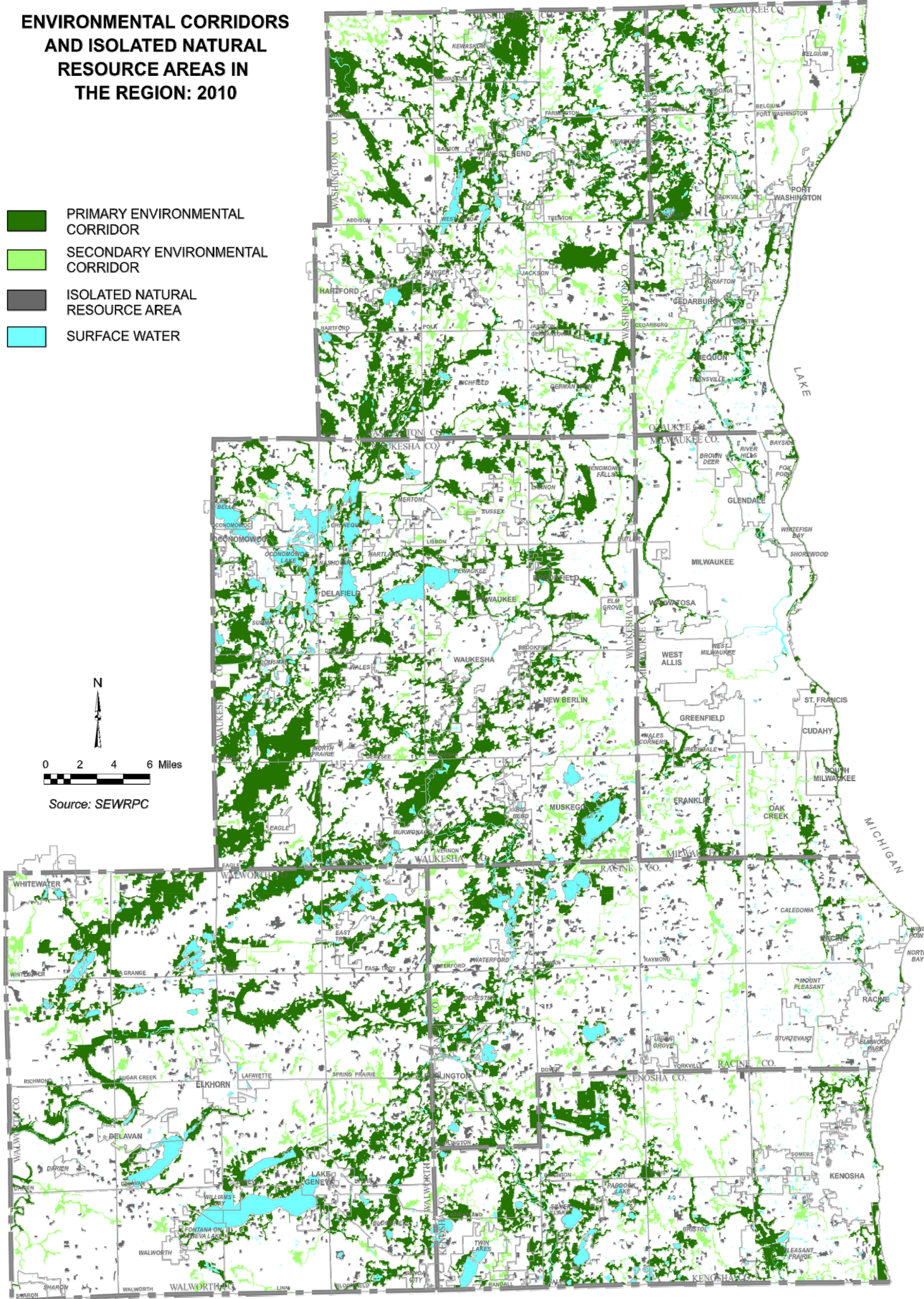
# ENVIRONMENTAL CORRIDORS AND ISOLATED NATURAL RESOURCE AREAS IN THE REGION: 2010

-  PRIMARY ENVIRONMENTAL CORRIDOR
-  SECONDARY ENVIRONMENTAL CORRIDOR
-  ISOLATED NATURAL RESOURCE AREA
-  SURFACE WATER



0 2 4 6 Miles

Source: SEWRPC



Source: SEWRPC