

# Scope of Services For Root River Watershed Restoration Plan

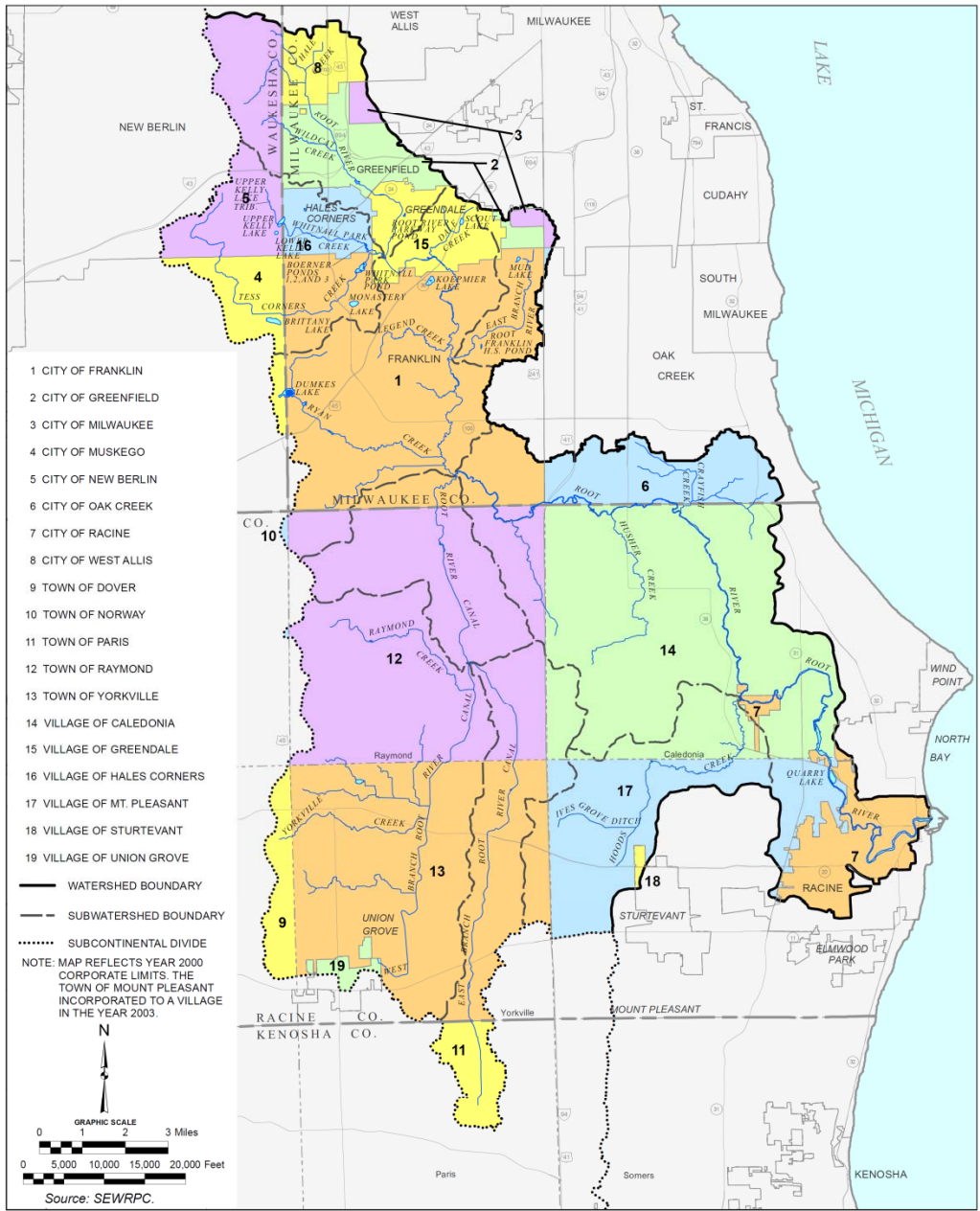
Michael G. Hahn, Chief Environmental Engineer

Joseph E. Boxhorn, Ph.D., Senior Planner

Southeastern Wisconsin Regional Planning Commission



CIVIL DIVISIONS WITHIN THE ROOT RIVER WATERSHED: 2000



# Focus Areas

Water Quality

Recreational Use and Access

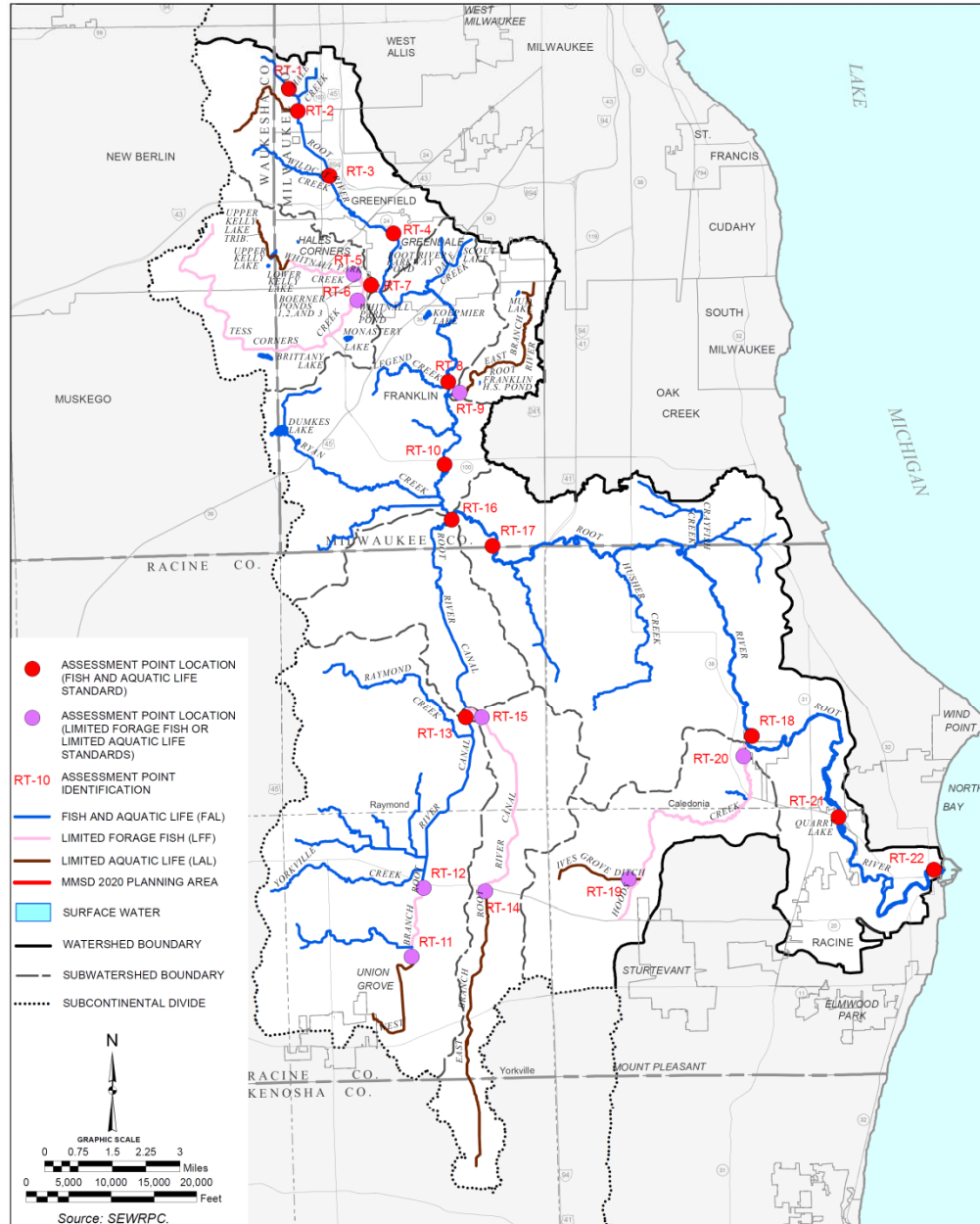
Habitat Conditions

Flooding

# Tasks

1. Summarize Recommendations of the Regional Water Quality Management Plan Update (RWQMPPU)
2. Evaluate Implementation of the RWQMPPU
3. Inventory Recent and Ongoing Projects, Programs, and Initiatives and Integrate these Into Recommendations
4. Review and Refine Initially Identified Focus Issues
5. Characterize the Watershed Concentrating on Features Related to the Focus Issues

### ASSESSMENT POINTS WITHIN THE ROOT RIVER WATERSHED FOR THE RECOMMENDED WATER QUALITY MANAGEMENT PLAN



# Tasks

6. Identify Targets to be Achieved by the End of the Plan Period
7. For Each Target, Identify Actions to be Taken
8. Identify Foundation Actions
9. Present Actions in Addition to those Recommended in the RWQMPPU
10. Develop an Implementation Strategy