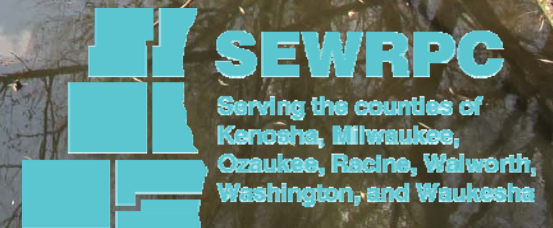


# Root River Watershed Restoration Plan

Joseph E. Boxhorn, Ph.D.  
Senior Planner

Southeastern Wisconsin Regional  
Planning Commission



# Partners and Funding Agencies



Municipalities and Counties of the Root River Watershed

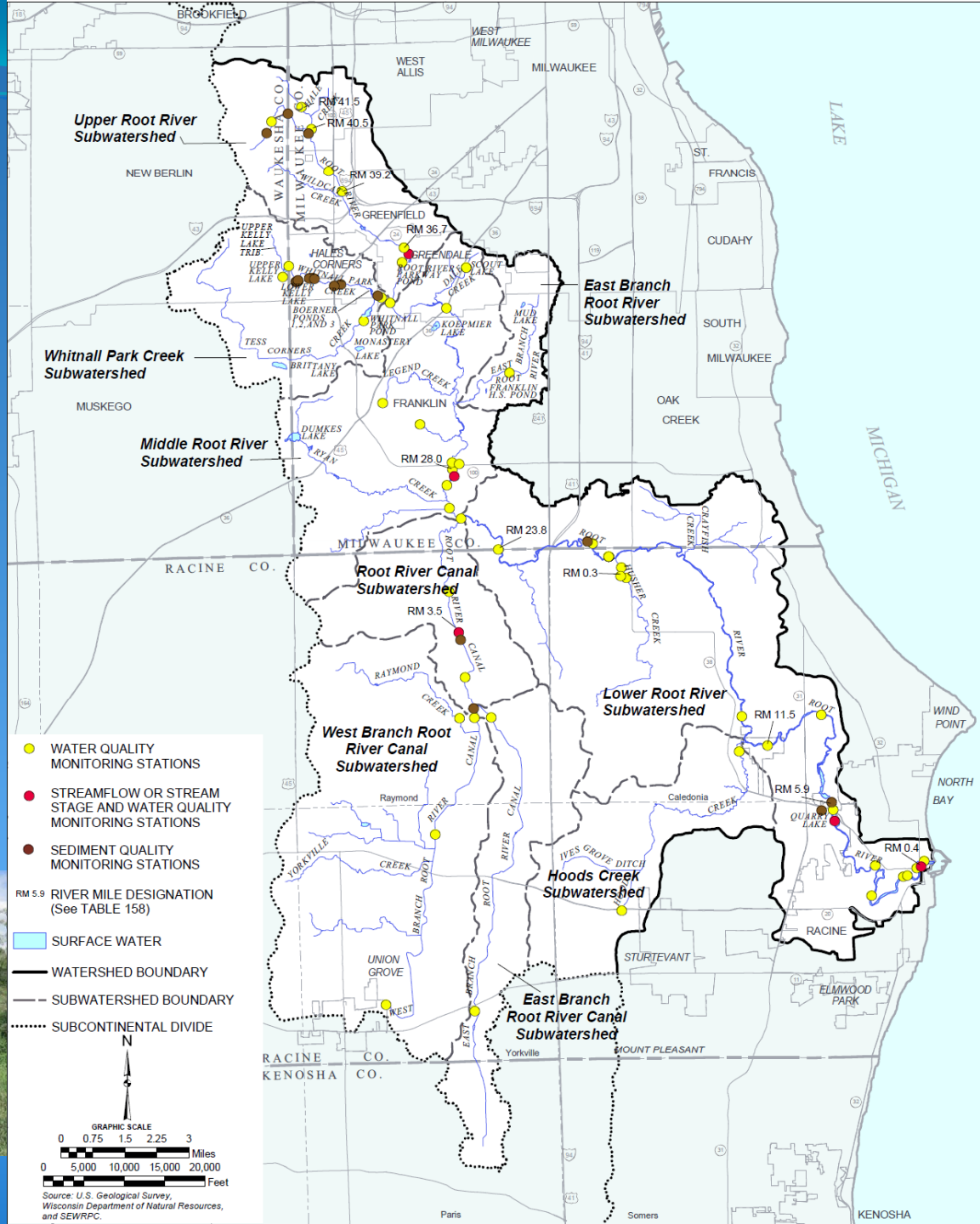


# Background on the Watershed

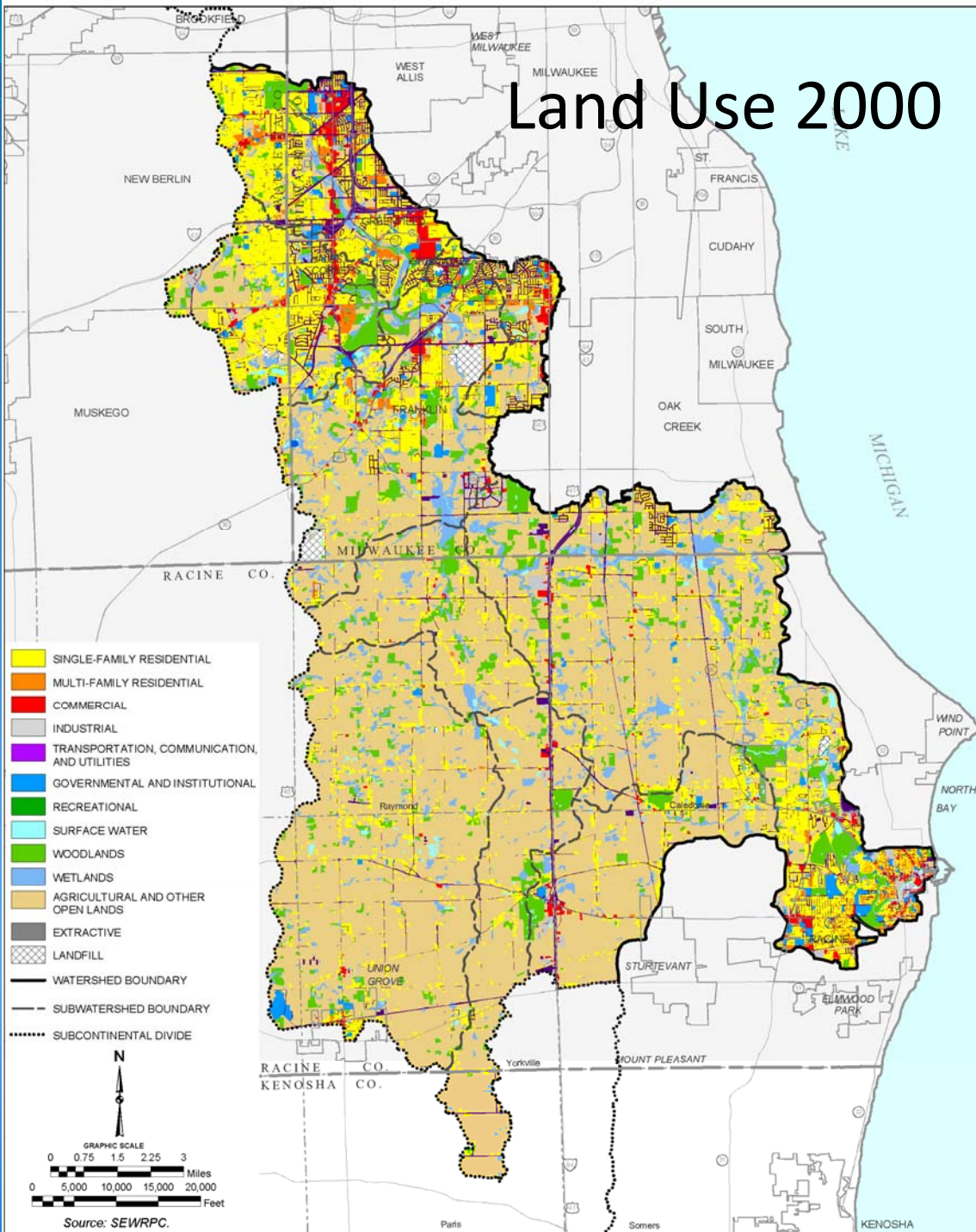




# Surface Waters of the Root River Watershed



# Land Use 2000

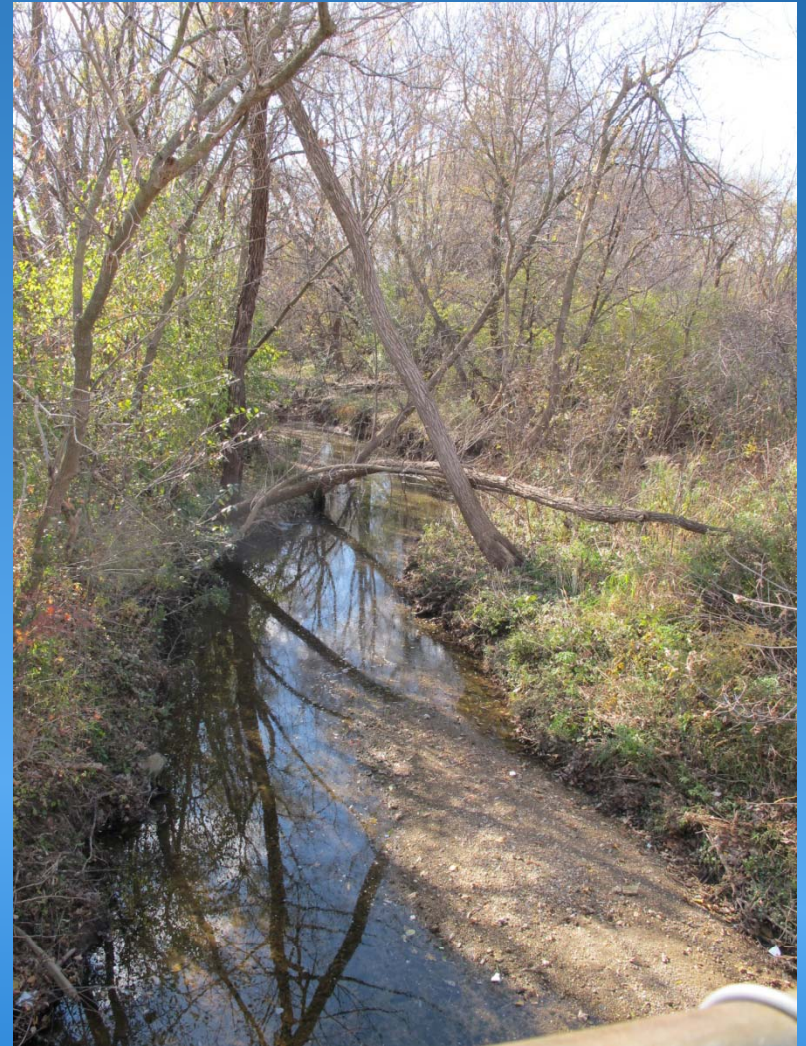


# Issues Identified in the Findings of the Regional Water Quality Management Plan Update (2007) and Other Recent Planning Efforts

- Impairments related to low dissolved oxygen
- Impairments due to fish consumption advisories
- High fecal indicator bacteria concentrations
- Poor quality fishery upstream of Horlick Dam
- Fragmentation of terrestrial habitat
- Streambed and streambank erosion
- Access to the River
- Invasive species

# General Plan Goal—Refine and Detail RWQMPS

- Identify a set of focus issues to address over a relatively short time frame
  - Tractable
  - Small number of focus issues
  - Five year time frame
  - Make improvements





# Focus issues

- Two-part survey of stakeholders
  - Part 1 – Identify the issues
  - Part 2 – Prioritize the issues
- Results – Part 1
  - 31 responses
  - 318 answers
  - Distilled to 43 issues

# Focus issues

- Results – Part 2
  - 61 responses – Four themes emerged
  - Four focus issues

# Focus Issues

## 1. Water Quality

- Examples → Nutrients, sediment, chloride

## 2. Recreational Use and Access

- Examples → Bacteria, access points, fishery quality

## 3. Habitat Conditions

- Examples → Buffers, connectivity, passage barriers, invasive species

## 4. Flooding

# Plan Approach

1. Summarize Recommendations of the Regional Water Quality Management Plan Update (RWQMPU)
2. Evaluate Implementation of the RWQMPU
3. Inventory Recent and Ongoing Projects, Programs, and Initiatives and Integrate these Into Recommendations
4. Review and Refine Initially Identified Focus Issues
5. Characterize the Watershed Concentrating on Features Related to the Focus Issues

## Plan Approach

6. Identify Targets to be Achieved by the End of the Plan Period
7. For Each Target, Identify Actions to be Taken
8. Identify Foundation Actions
9. Present Actions in Addition to those Recommended in the RWQMPSU
10. Develop an Implementation Strategy

# Summarizing the Recommendations of the Regional Water Quality Management Plan Update



# Recommendations of the Regional Water Quality Management Plan Update

- Land Use (5)
- Point Source Abatement (9)
- Rural Nonpoint Source Controls (11)
- Urban Nonpoint Source Controls (8)
- Instream Water Quality Measures (9)
- Inland Lake Water Quality (3)
- Auxiliary Water Quality Measures (12)
- Groundwater Management (4)
- Water Use Objectives (2)

# Implementation Status of the Regional Water Quality Management Plan Update

- Classified recommendations into three groups
  1. Recommendations that reflect existing regulatory requirements
  2. Recommendations that are in various stages of implementation
  3. Recommendations that are not yet implemented



# Recommendations that Reflect Regulatory Requirements

- Examples
  - Regulation of point sources through the Wisconsin Pollutant Discharge Elimination System
  - Bans and restrictions on possession, transport, transfer, and introduction of invasive species
  - Phosphorus fertilizer ban partially implements fertilizer management program recommendation

# Recommendations that Reflect Regulatory Requirements

- Examples

- Local pet litter ordinances
- Most of the municipalities in the watershed have them



# Recommendations in Various Stages of Implementation

- Most of the recommendations
- Examples
  - Construct and maintain local sanitary sewer systems
  - Implement practices to reduce soil loss from cropland below the tolerable soil loss rate
  - Establish riparian buffers
  - Restore and enhance stream channels

# Recommendations in Various Stages of Implementation

- Examples

- Collection programs for expired and unused medicines
  1. Collection events
  2. Drop-off centers and boxes
  3. Mail back programs
- Most of the watershed is covered by some program

# Recommendations that Are Not Yet Implemented

- Examples

- Abandoning the Yorkville wastewater treatment plant at the end of its useful life
- Increasing the levels of cost-share funding available for funding barnyard runoff BMPs
- Upgrading water use objectives for Hoods Creek, Tess Corners Creek, Whitnall Park Creek

# Next Steps

- Goal is to develop specific, targeted recommendations to make improvements in the four focus areas
- Characterize the watershed
  - Finer scale
  - Examine factors most closely related to the focus issues
  - Update and expand those analyses that are most closely related to the focus issues

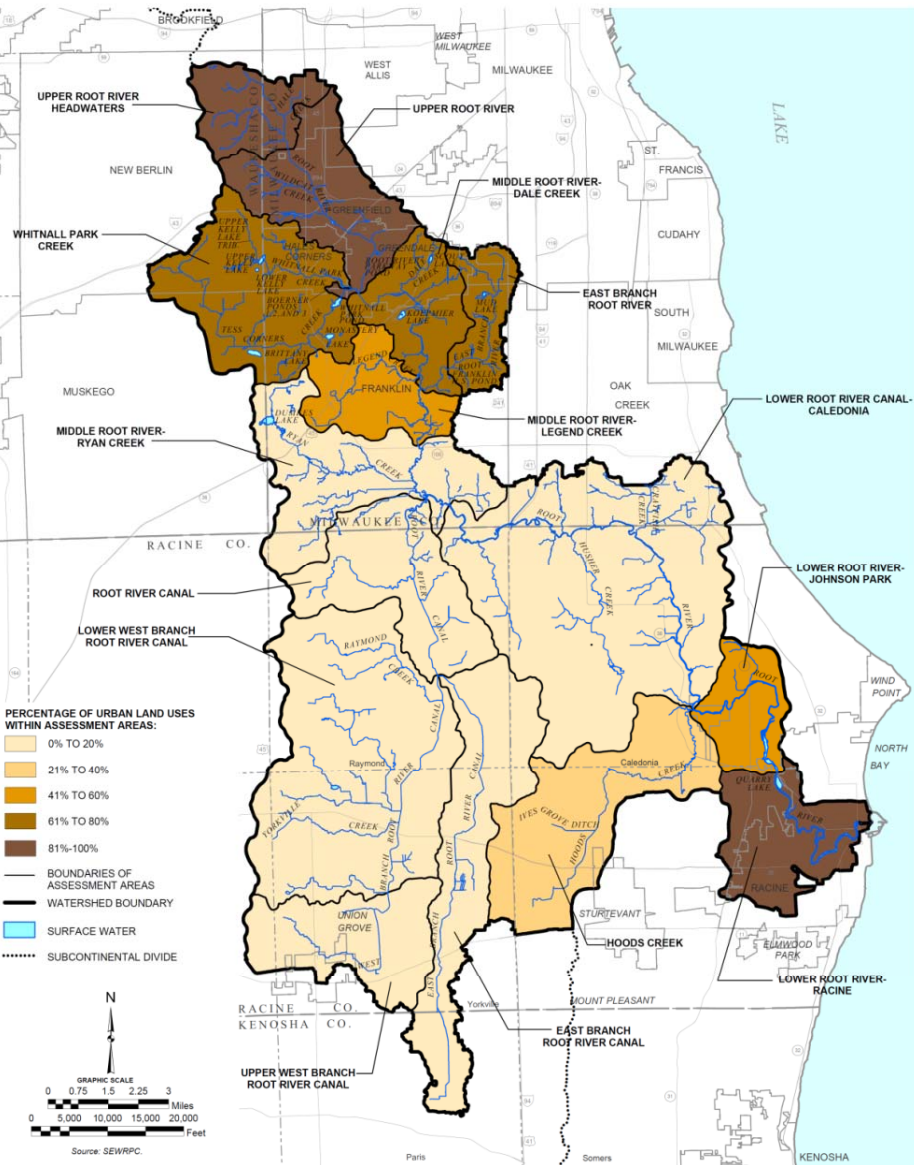
# Characterization of the Watershed

- Assessing conditions at Horlick Dam
  - To provide information to inform decision making
- Factors examined
  - Sediment behind the dam
  - Elevations
  - Surrounding area

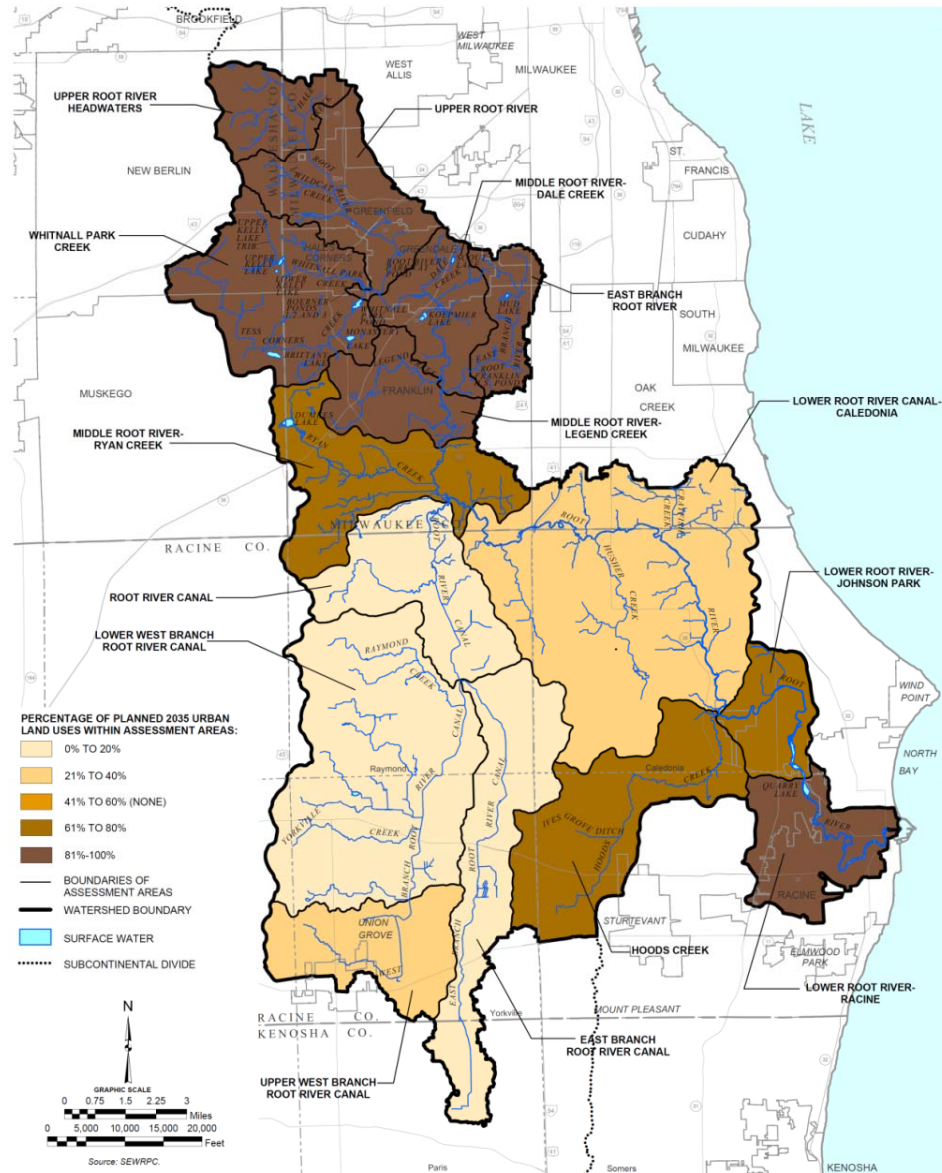


# Characterization of the Watershed

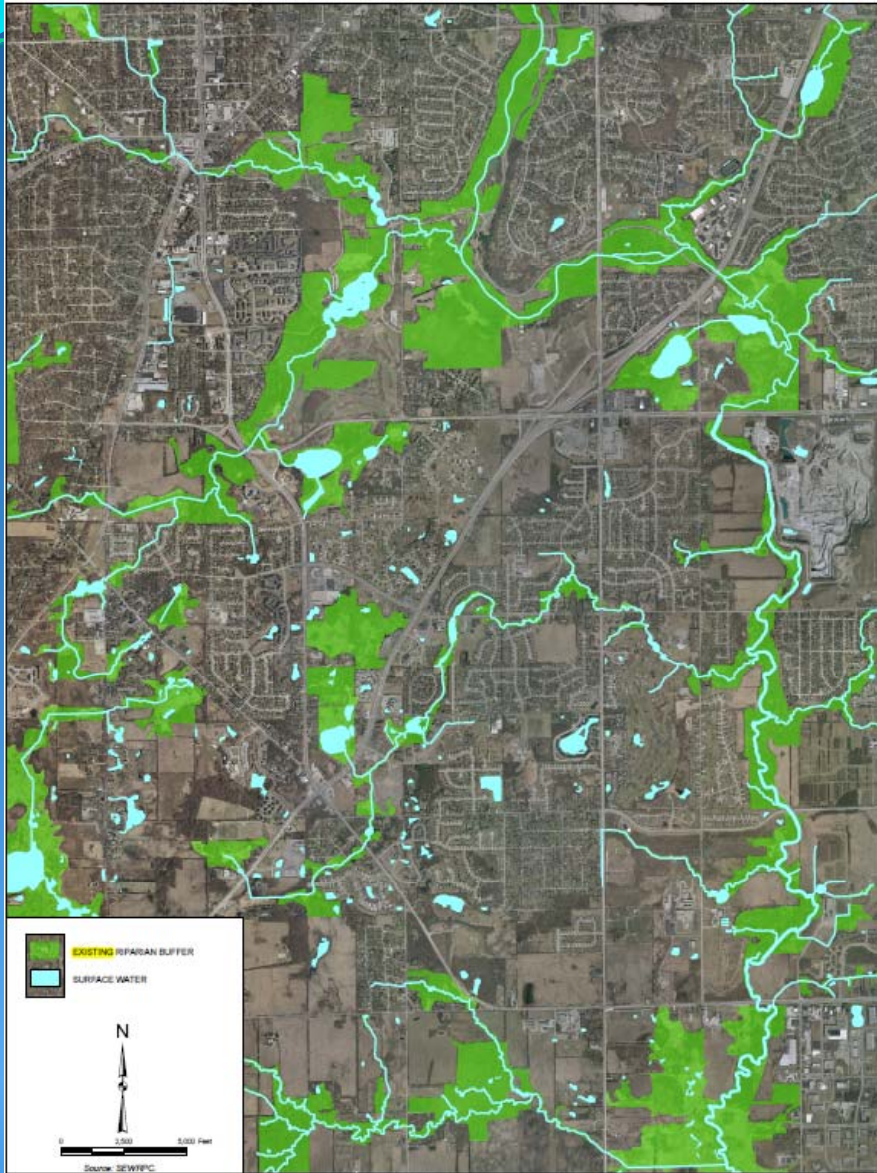
URBAN LAND USES WITHIN ASSESSMENT AREAS IN THE ROOT RIVER WATERSHED: 2000



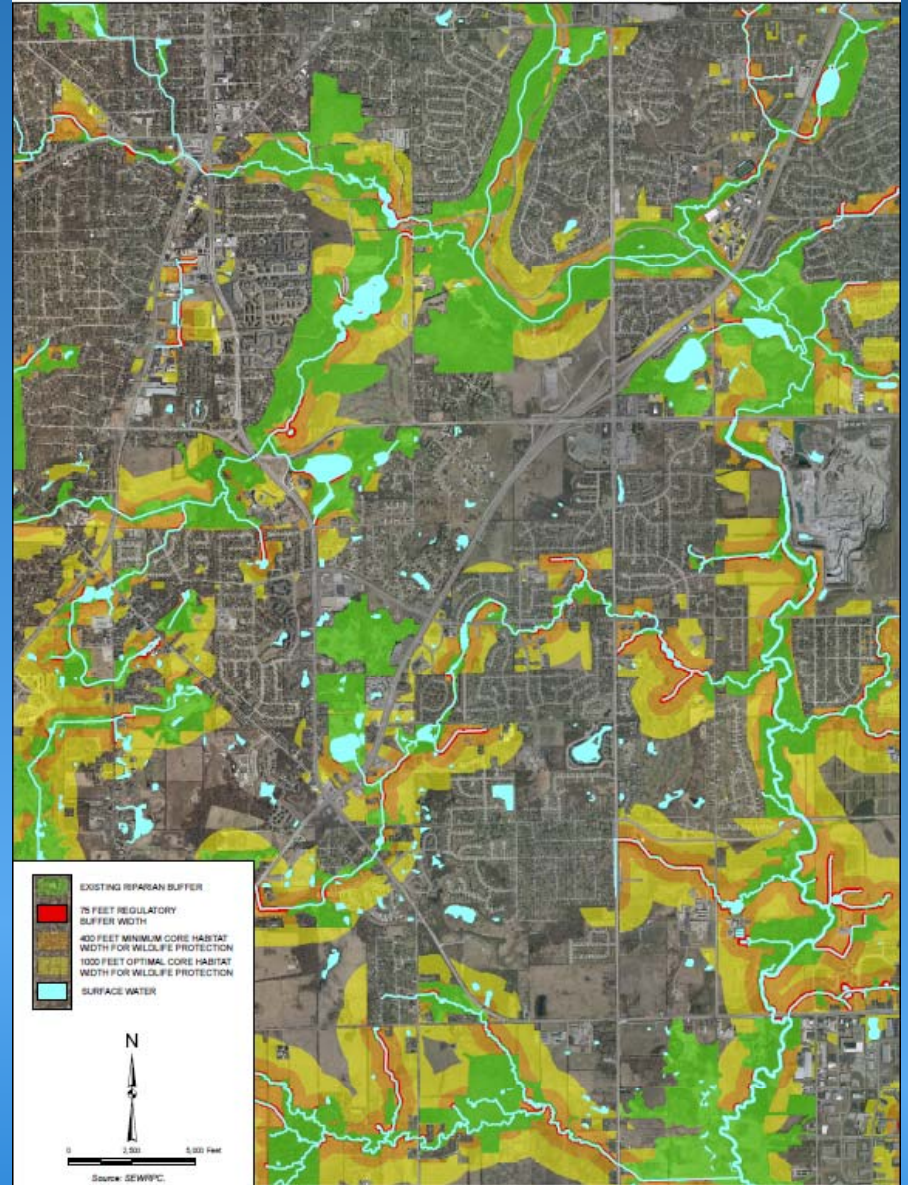
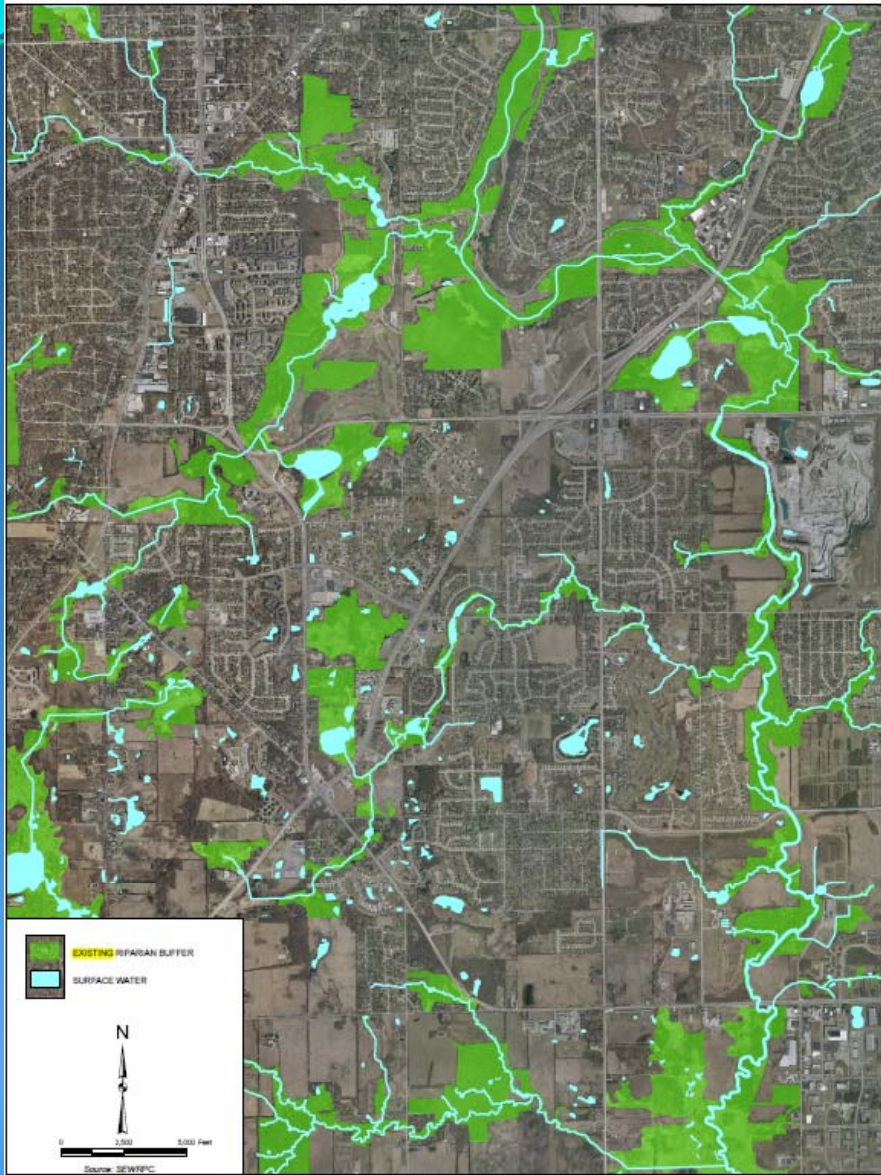
PLANNED URBAN LAND USES WITHIN ASSESSMENT AREAS IN THE ROOT RIVER WATERSHED: 2035

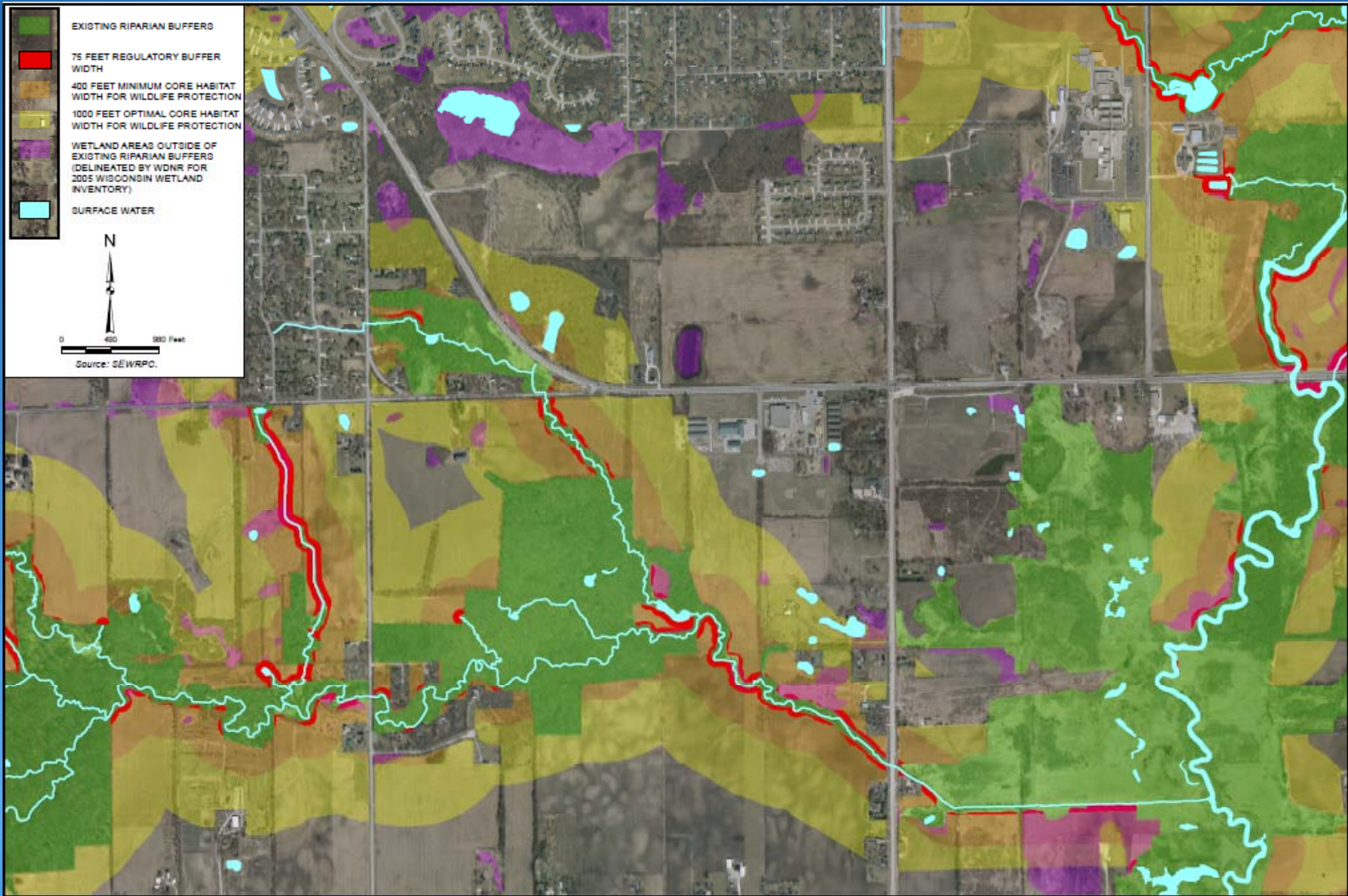






- Examining Riparian Buffers
  - Identify sites that could increase connectivity





# Project Timeline

- Project runs through December 2013
- 2012
  - Characterize the watershed relative to focus issues
  - Identify targets to be achieved
  - Identify actions to be taken
- 2013
  - Identify actions to be taken
  - Identify Foundation actions
  - Develop implementation strategy

# Project Web Site

- <http://www.sewrpc.org/SEWRPC/Environment/Root-River-Watershed-Restoration-Plan.htm>
  - Presentations from RRRPG meetings
  - Draft chapters as they are completed
  - Comment screen

