

Oak Creek Watershed Restoration Plan

2016 and 2017 Progress Meeting
April 26, 2017



Speakers

Laura Herrick, P.E. – Chief Environmental Engineer

Thomas Slawski, Ph.D. – Chief Biologist



Project Updates

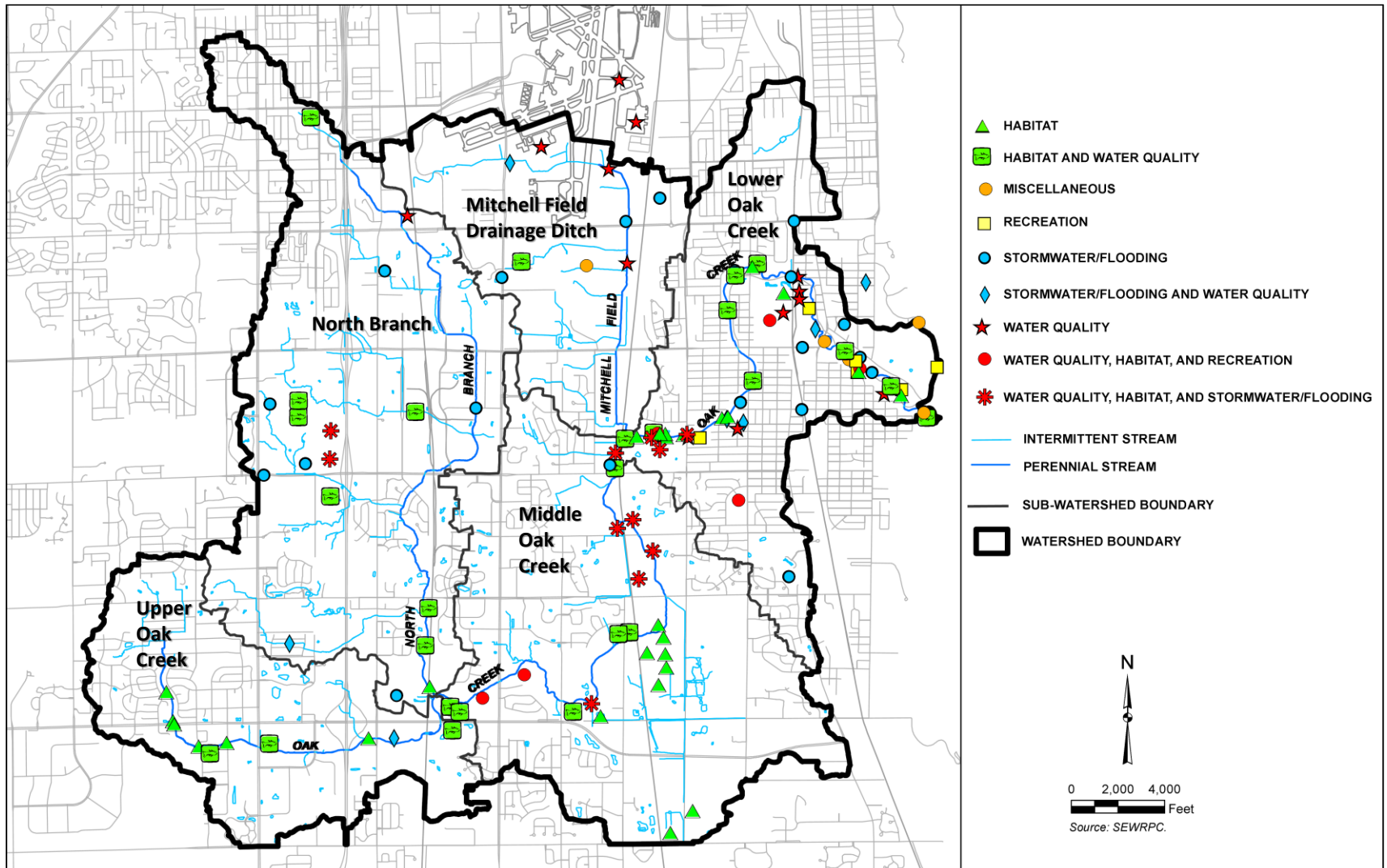


- Summary of Public Comments Associated with Focus Areas
- Field Data Collection
 - Progress in 2016 and plans for 2017
 - Water Temperature Data
 - Fish Passage Assessment



Public Comments Associated with Focus Areas

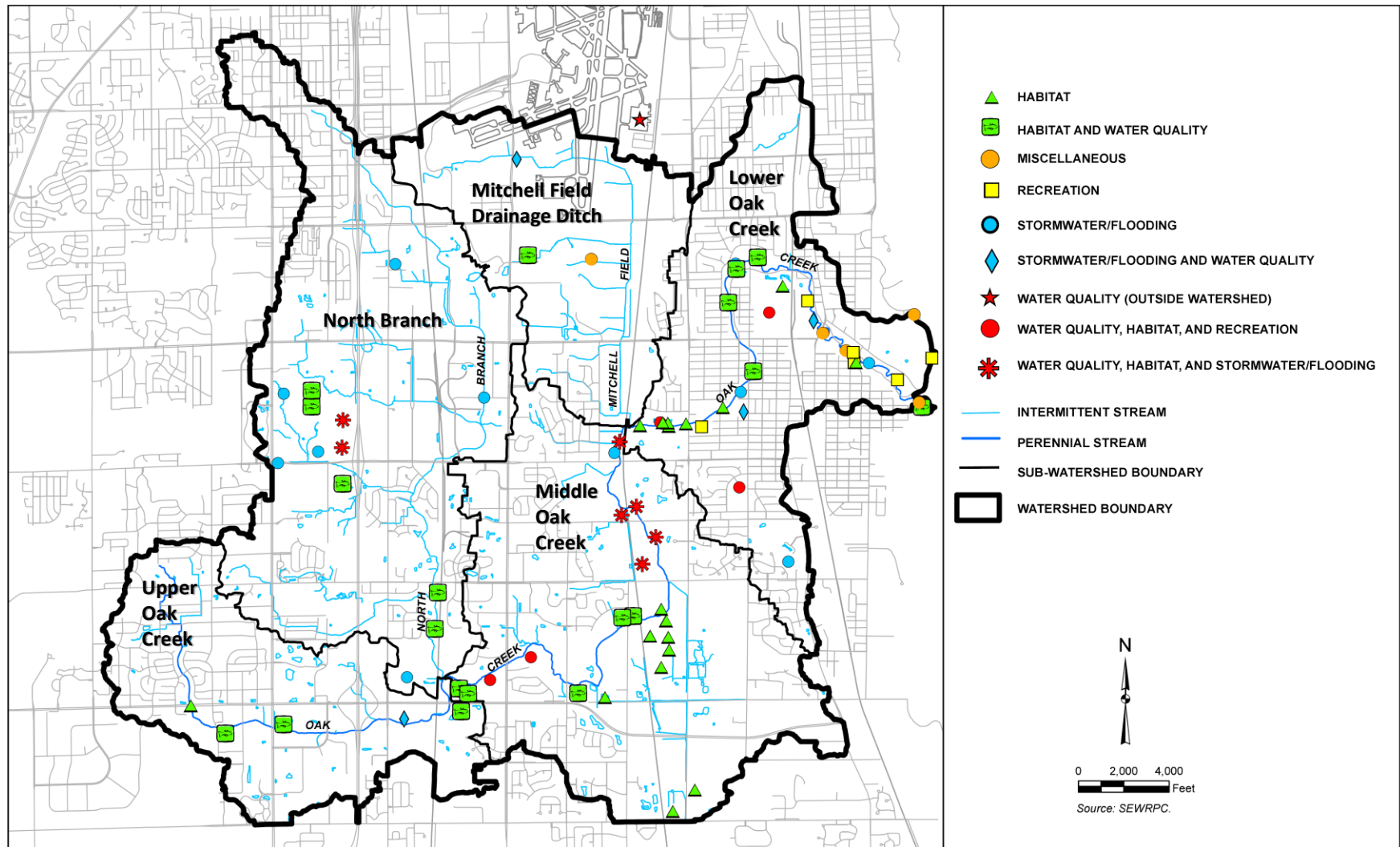
All public comments tied to a specific location received on 8/30/2016





Public Comments Associated with Focus Areas

Positive public comments tied to a specific location received on 8/30/2016





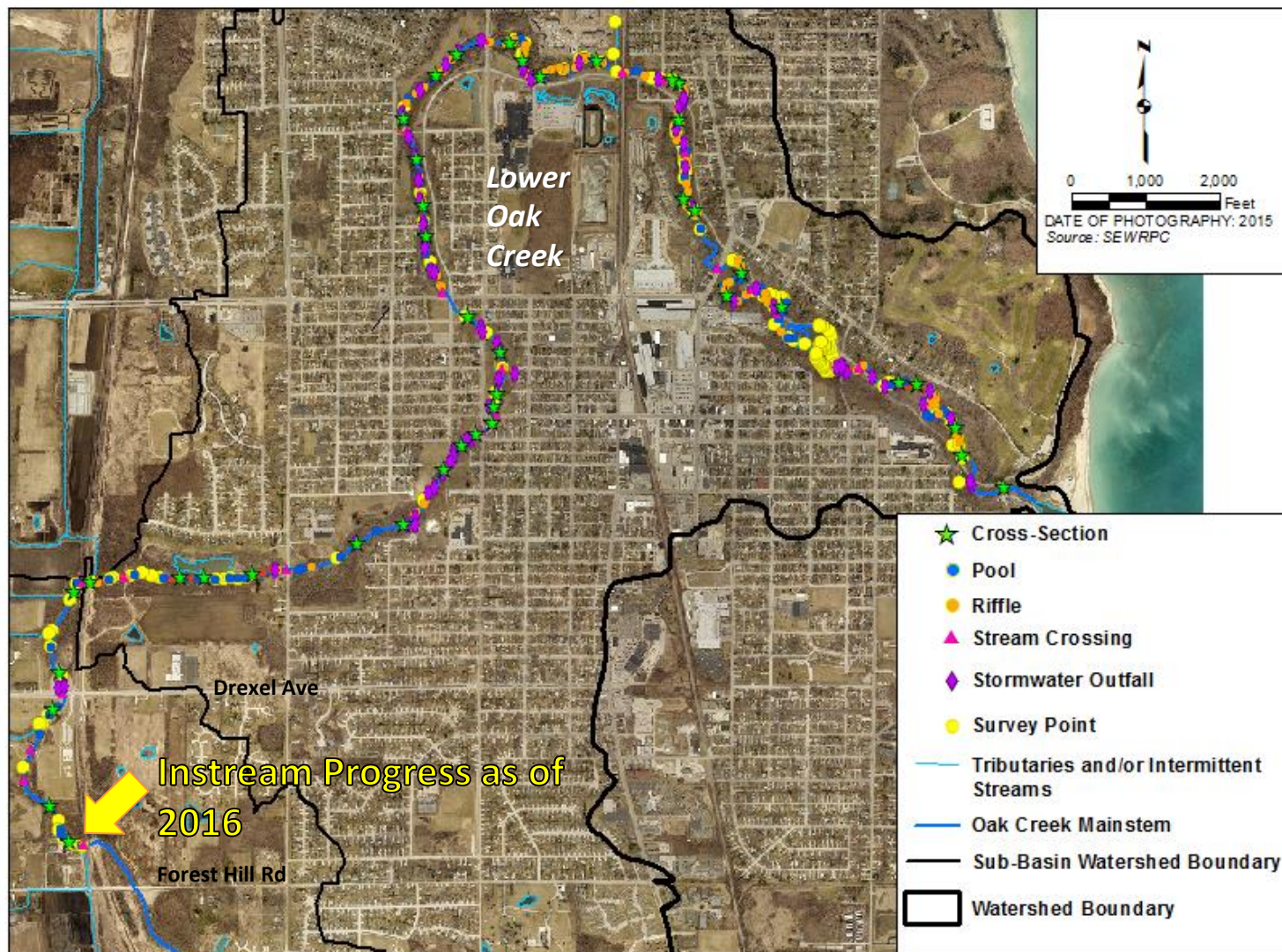
2016 Instream Field Work Progress



- Bank Erosion
- Habitat Features
- Riparian Vegetation
- Trash
- Woody Structure/Jams

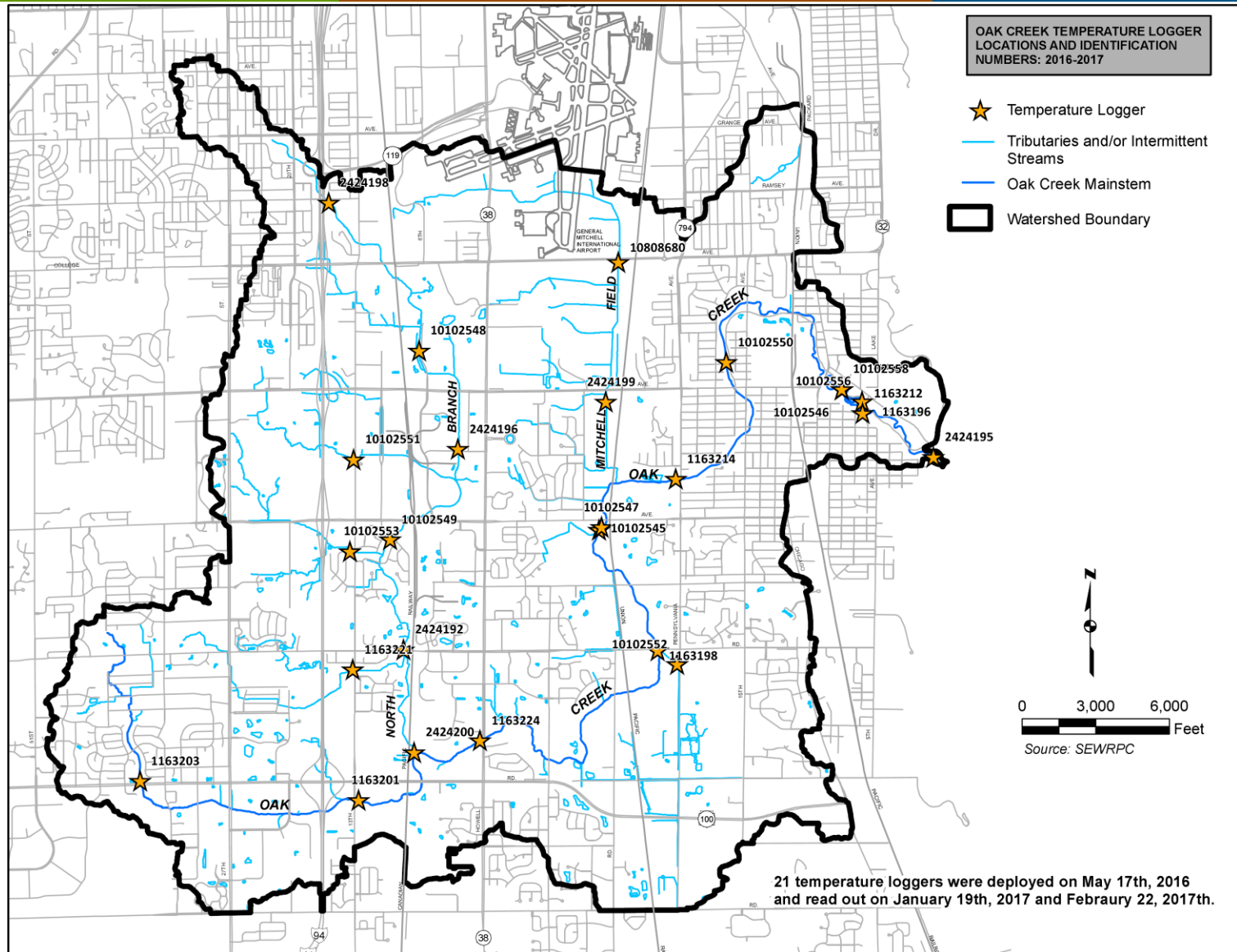


2016 Instream Field Work Progress





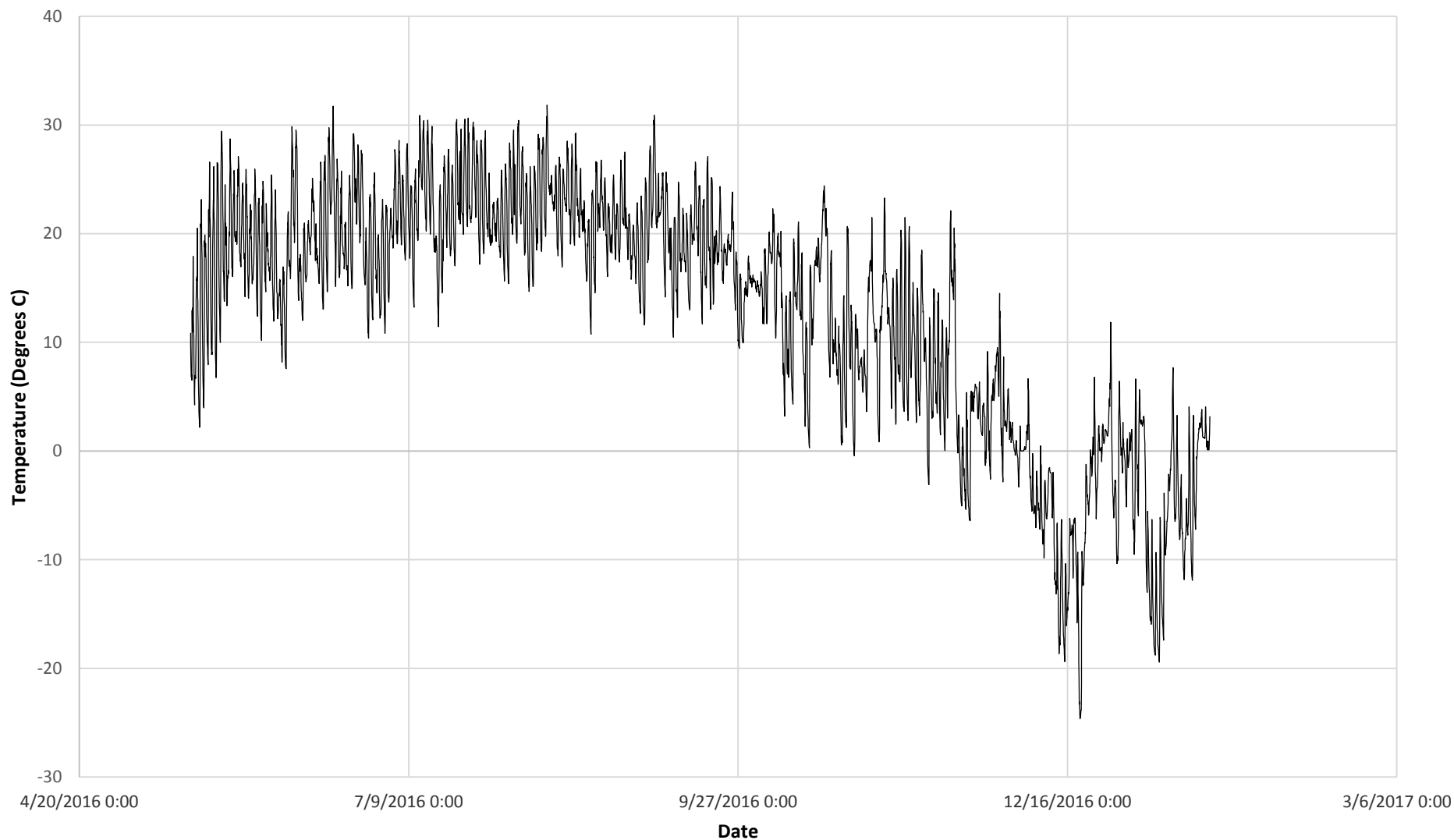
Temperature Logger Locations





Temperature Data-Preliminary Results

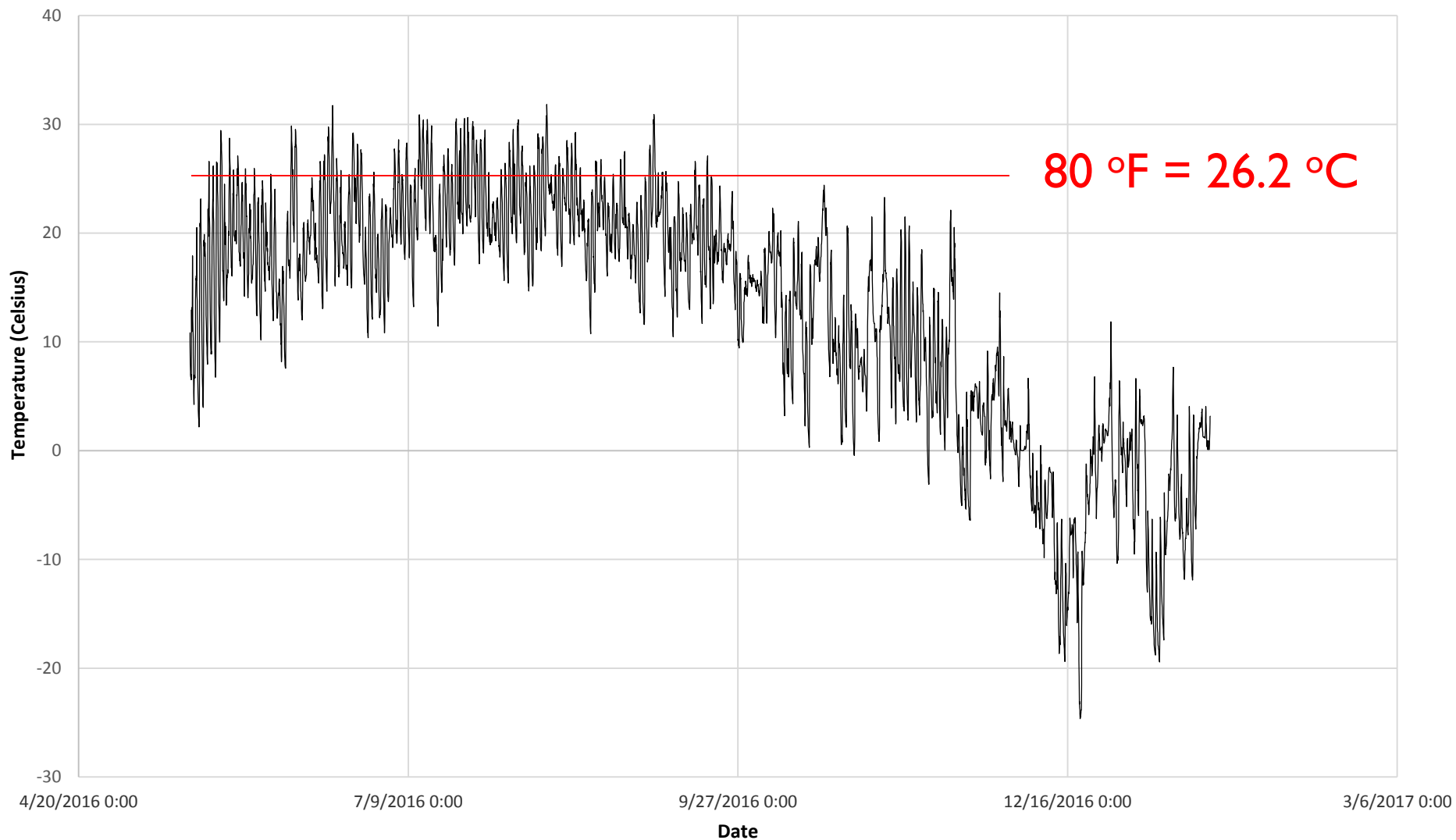
Hourly readings-Air Temperature: May-Dec 2016



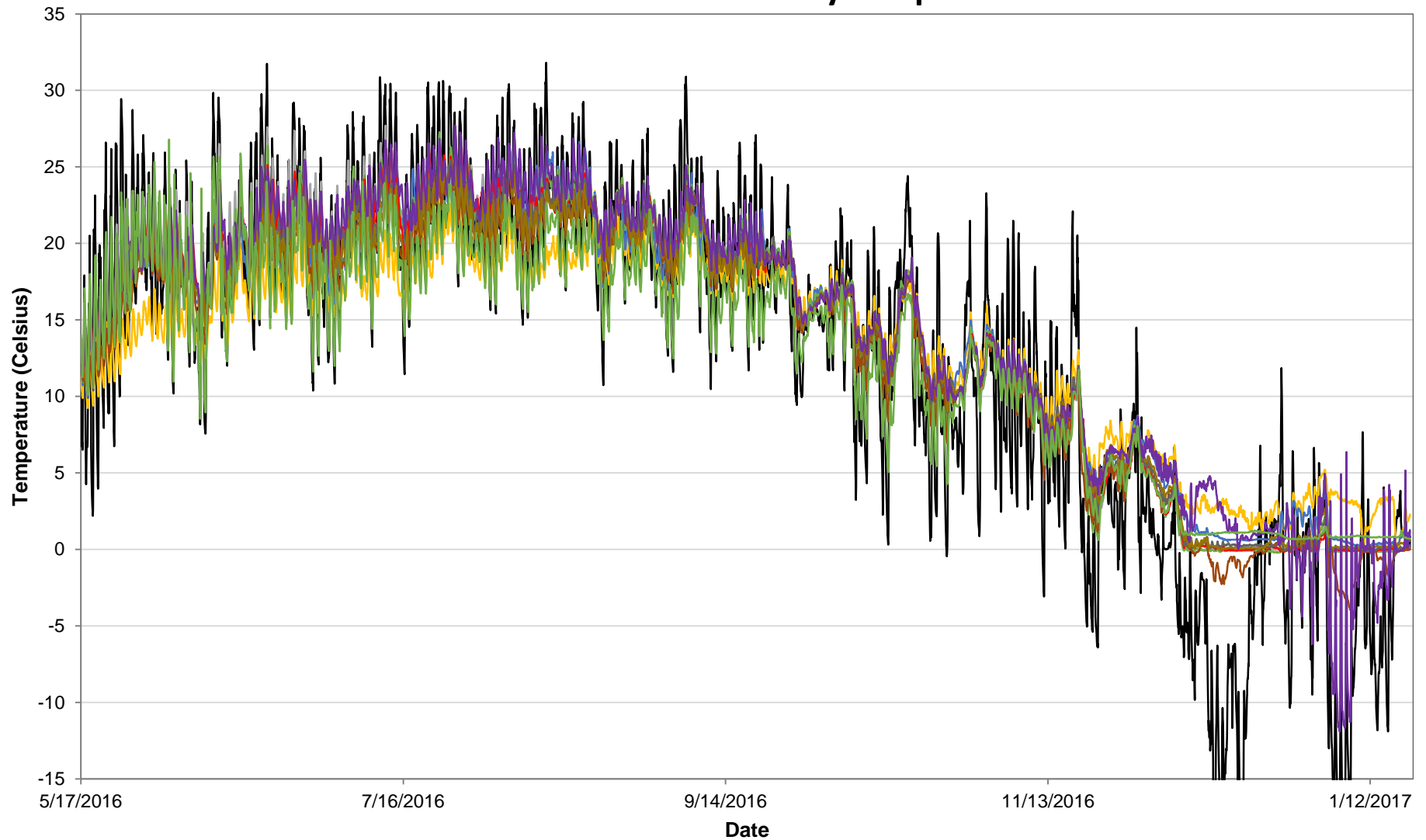


Temperature Data-Preliminary Results

Hourly readings-Air Temperature: May-Dec 2016

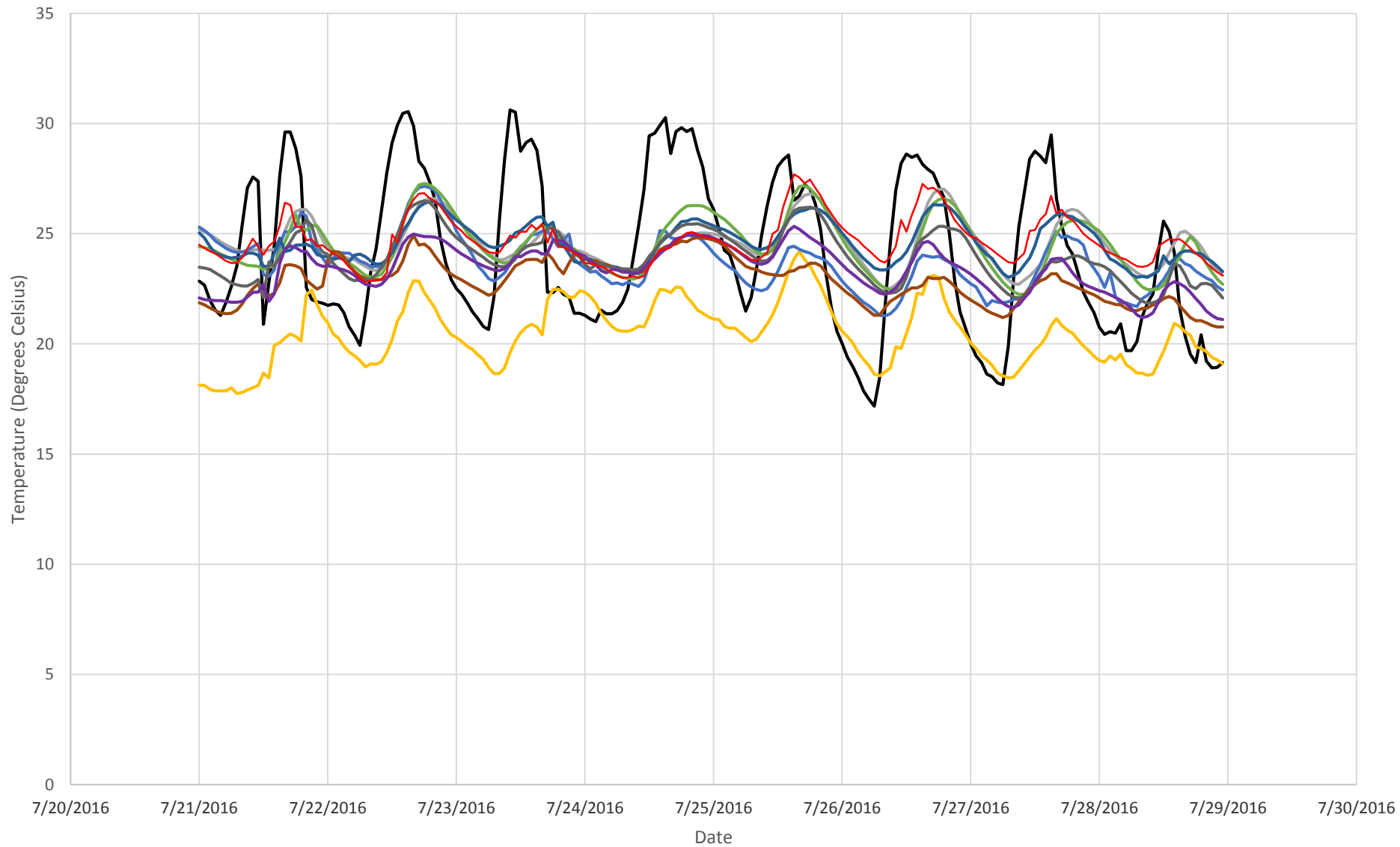


Mainstem Oak Creek Preliminary Temperature Data



AIR (10102545)	Puetz Rd. Crossing(1163198)	West of Kwik Trip in Ag area (1163201)
Ryan Rd. Headwaters (1163203)	S. Howell Ave. (1163224)	U/S of Nicholson Ave. (1163214)
Skate Park (10102547)	Near Chestnut St. by Pump Station (10102550)	Oak Creek Pkway (10102546)
At the mouth of Oak Creek (2424195)	Nicholason Ave Trib (10102552)	

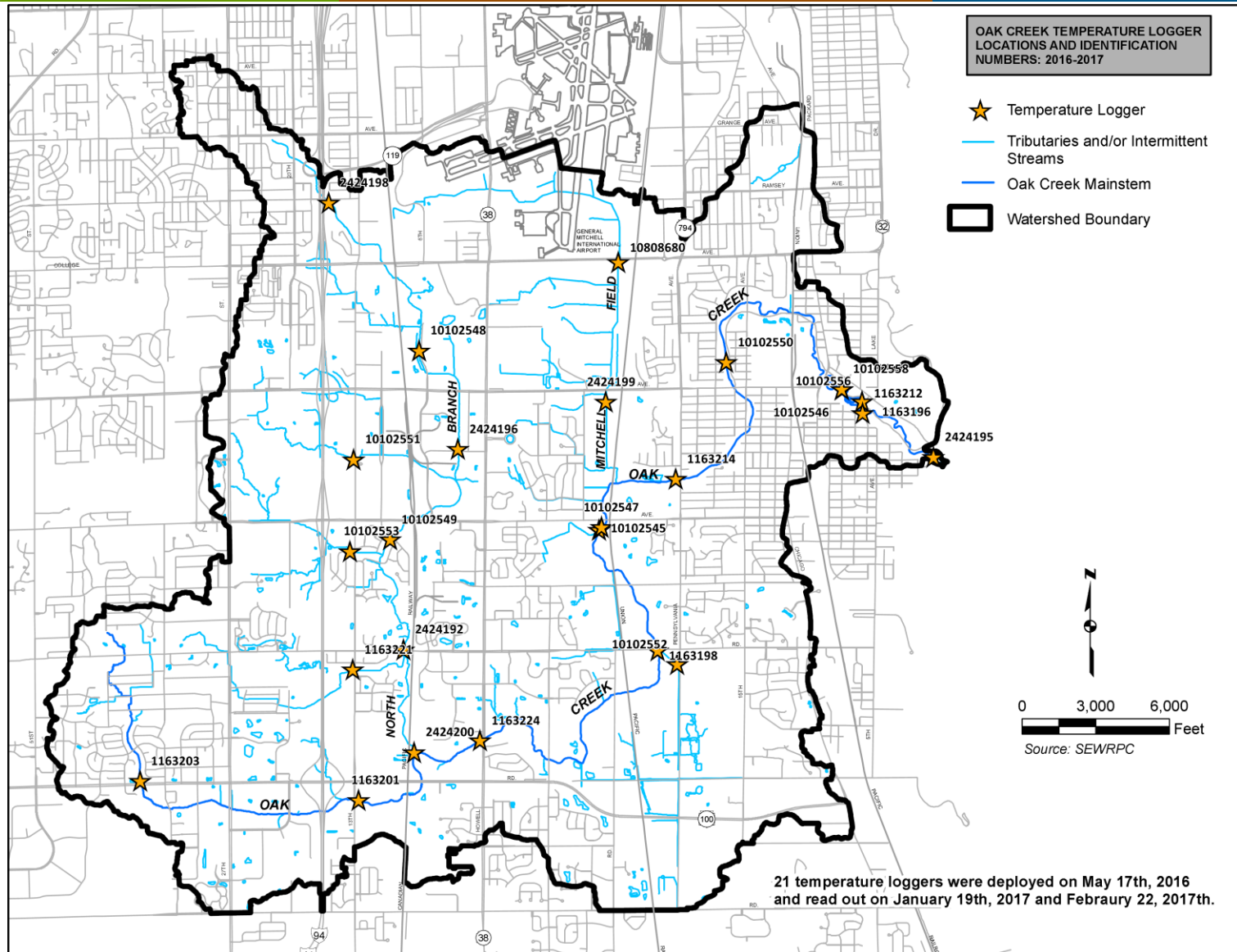
Oak Creek Mainstem Preliminary Data of Warm Week 7/21/2016 through 7/28/2016



- AIR (10102545)
- Ryan Rd. Headwaters (1163203)
- Skate Park (10102547)
- At the mouth of Oak Creek (2424195)
- Puetz Rd. Crossing(1163198)
- S. Howell Ave. (1163224)
- Near Chestnut St. by Pump Station (10102550)
- Oak Creek Pkway (10102546)
- U/S of Nicholson Ave. (1163214)
- West of Kwik Trip in Ag area (1163201)



Temperature Logger Locations





Fish Passage Barriers Update: 2016 field data

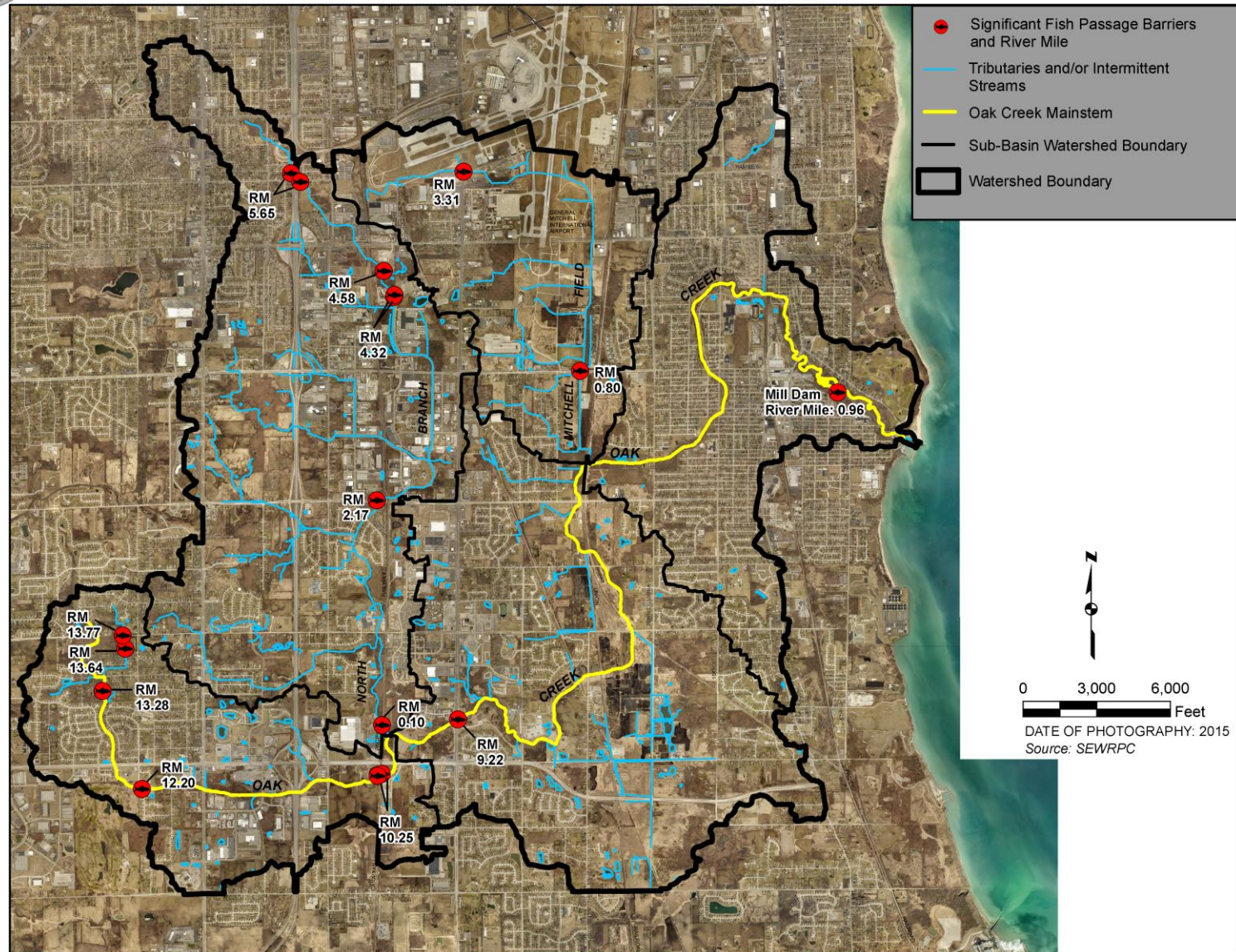


© MN DNR, Konrad P. Schmidt





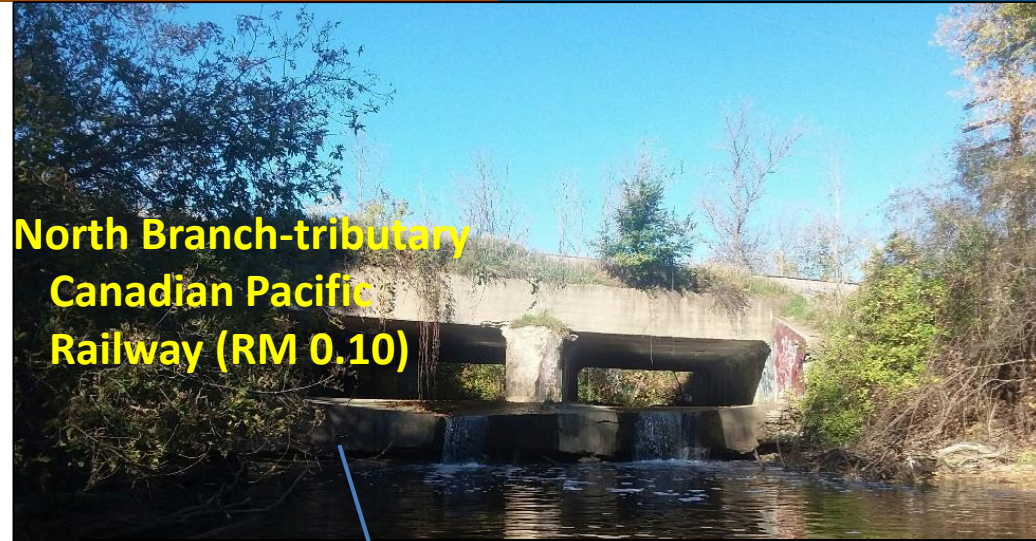
Fish Passage Barriers Update: 2016 field data



Fish Passage Barriers Update: 2016



**Oak Creek-mainstem
South Howell Avenue (RM 9.22)**



**North Branch-tributary
Canadian Pacific
Railway (RM 0.10)**



**Oak Creek-mainstem
Puetz Road (RM 6.83)
Beaver dam-removed...**

**Major
Obstruction**



**5-6 foot high
Perched culvert**



Website and Contact Information



■ Communication

- SEWRPC website for documents and comments

<http://www.sewrpc.org/SEWRPC/Environment/Restoration-Plan-Oak-Creek-Watershed.htm>

■ Contacts

- Laura Herrick – Chief Environmental Engineer 262-953-3224 or lherrick@sewrpc.org
- Tom Slawski – Chief Biologist 262-953-3263 or tslawski@sewrpc.org