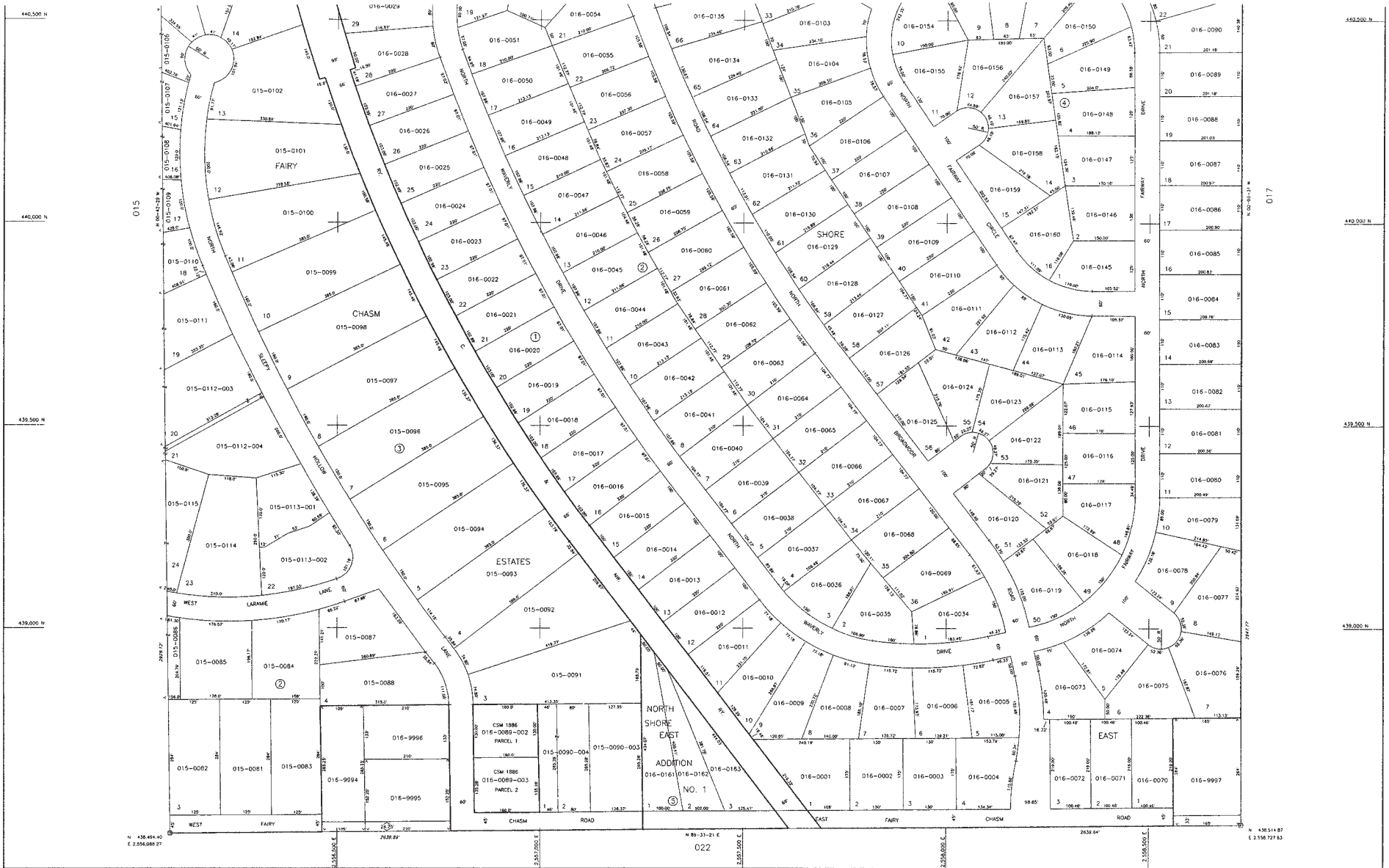


TYPICAL CADASTRAL MAP



LEGEND

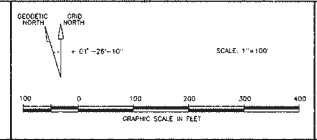
- MONUMENTED U.S.P.S. CORNER
- U.S.P.S. SECTION LINE
- - - U.S.P.S. QUARTER SECTION LINE
- 26.19.89' GROUND LEVEL DISTANCE IN FEET
- 2639.64' GRID LEVEL DISTANCE IN FEET

COMPARISON SCALE AND SEA LEVEL
 REDUCTION FACTOR: 0.99999999

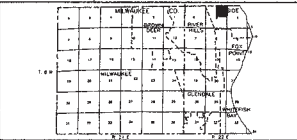
HORIZONTAL DATUM IS BASED ON THE WISCONSIN STATE PLUMB COORDINATE SYSTEM TO THE ANGLE NORTH AMERICAN DATUM OF 1927.

COMPILED FROM RECORDED SUBDIVISION PLATS, CERTIFIED SURVEY MAPS, RECORDED EASEMENTS, PUBLIC AND PRIVATE SURVEY RECORDS, AND LAND RECORDS OBTAINED FROM MILWAUKEE COUNTY REGISTER OF DEEDS OFFICE, SURVEYORS OFFICE, AND MUNICIPAL LAND RECORDS OFFICES.

DATE OF ORIGINAL SURVEY: VARIOUS DATES
 DATE OF LATEST REVISION: DECEMBER 21, 1991



CADASTRAL MAP OF
 NE 1/4 SECTION 5
 TOWNSHIP 8 NORTH, RANGE 22 EAST
 MILWAUKEE COUNTY, WISCONSIN



PREPARED FOR
MILWAUKEE COUNTY, WISCONSIN
 BY
 SOUTHEASTERN WISCONSIN REGIONAL
 PLANNING COMMISSION
 K.W. BAUER, P.E., EXECUTIVE DIRECTOR

